



Inside your newsletter this week:

Page 2 : Mrs Slade

Page 3 : This Week at Slade

Page 4 : Around School

Page 5 : Reading Corner

Page 6 : Behind the Magic Door

Page 7 : School, At Home

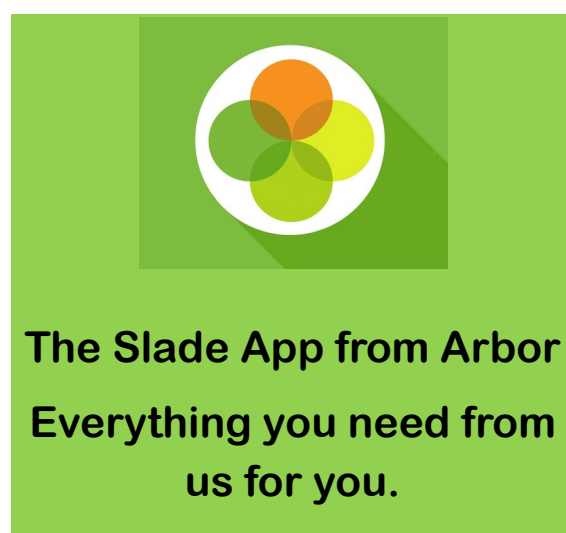
Page 8 : Slade Stats

Page 9 : Our Communication to you

Page 10 : Coming Up...



Slade Primary School Newsletter 2020/21 Term 3 Issue 6 / Friday 12 February 2021





Dear Parents and Carers,

Today's message can be streamed by clicking the link below:

<https://web.microsoftstream.com/video/72661770-8594-467f-9cf8-cbb0ba35df98>



I hope you all have a lovely break,

Take care and stay safe,

Karen Slade

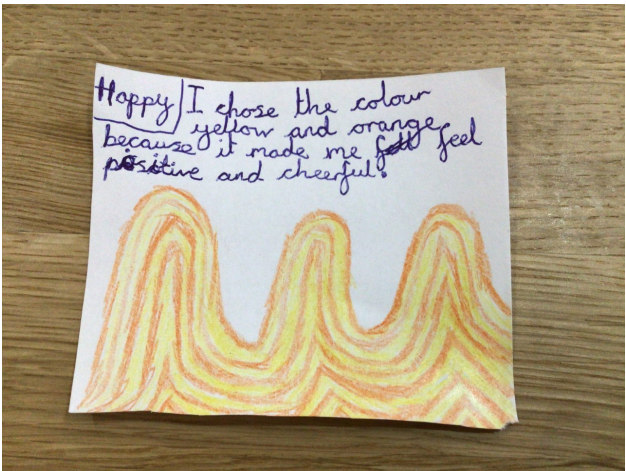
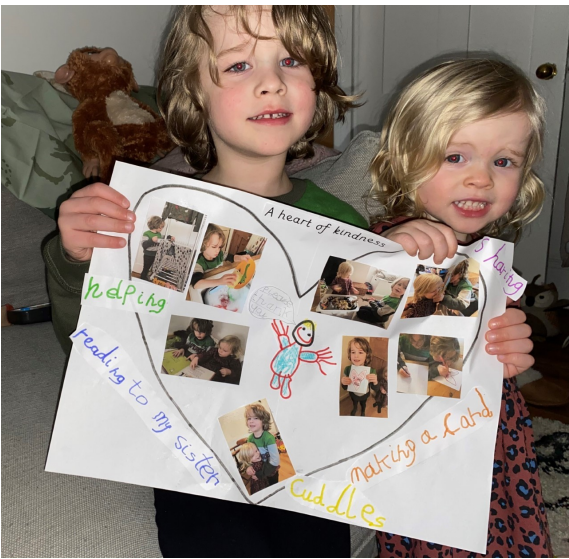
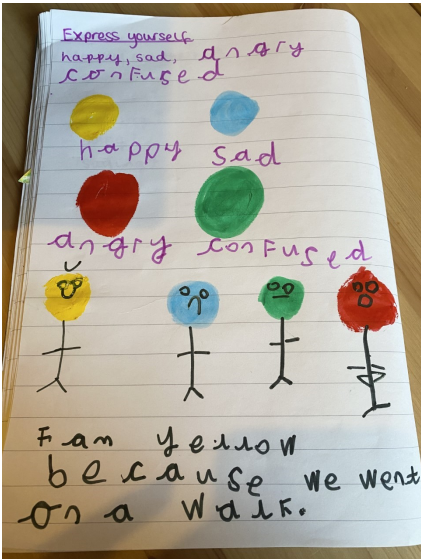
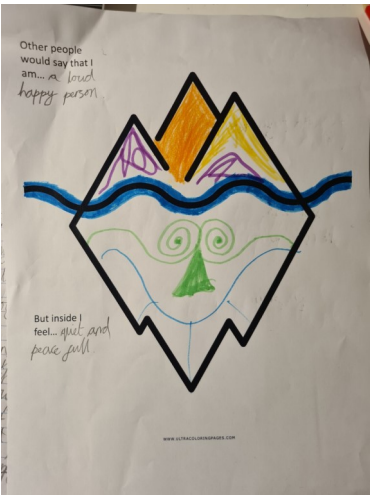
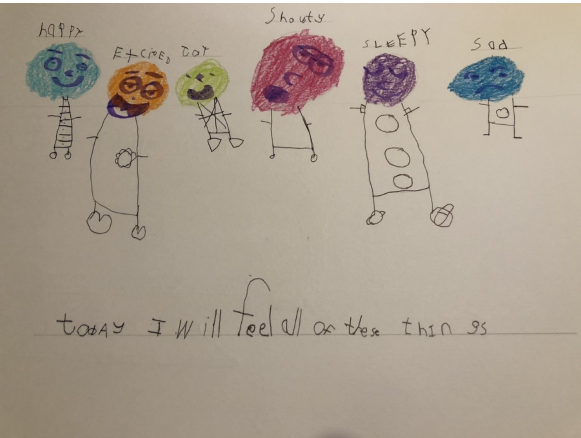
Children's Mental Health Week

You will remember that the first week of February was Children's Mental Health week from Place2Be. Mrs Knee organised the week for us at Slade and is proud and pleased to be able to share these posters and artwork inspired by the week's messages.

Thankyou to all of the children, parents and carers who took part in the various activities which will help the children understand this tricky, but vitally important subject.

Top Row, left to right: **Maggie (Elmer), Stella (Gnome), Sarang (Sphinx)**

Bottom Row, left to right: **Isla (Elf), Ellis(Gruffalo), Olivia (Pegasus)**





This Week at Slade

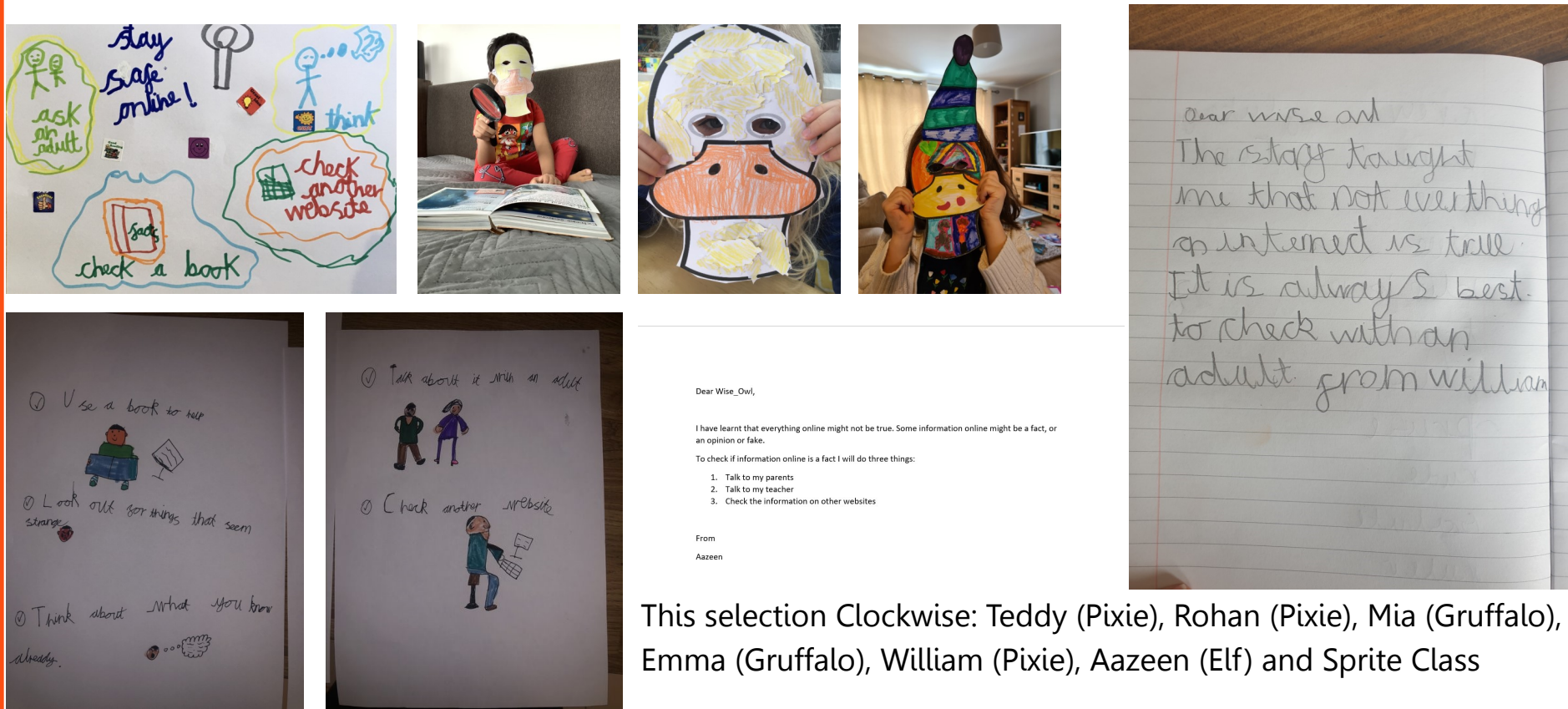
Safer Internet Day

Tuesday saw the children at Slade join their peers across Europe and the world in thinking about a safer internet on Safer Internet Day, which this year had the theme of **'An internet we trust: exploring reliability in the online world'**

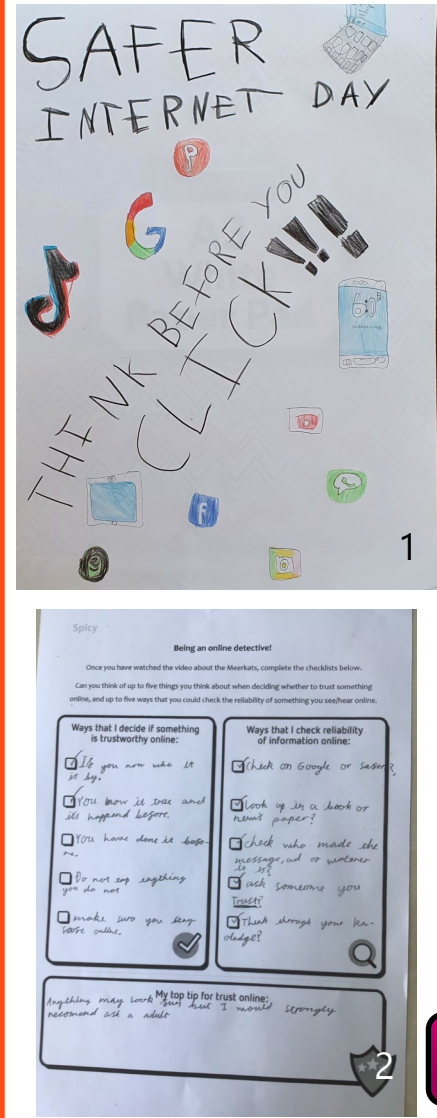


Everyone at school, especially organiser Mrs McFerran, would like to tank all of our parents and carers for helping and supporting the children with this special learning day. Miss McFerran is pleased to share some of the amazing E-safety learning from across the school.

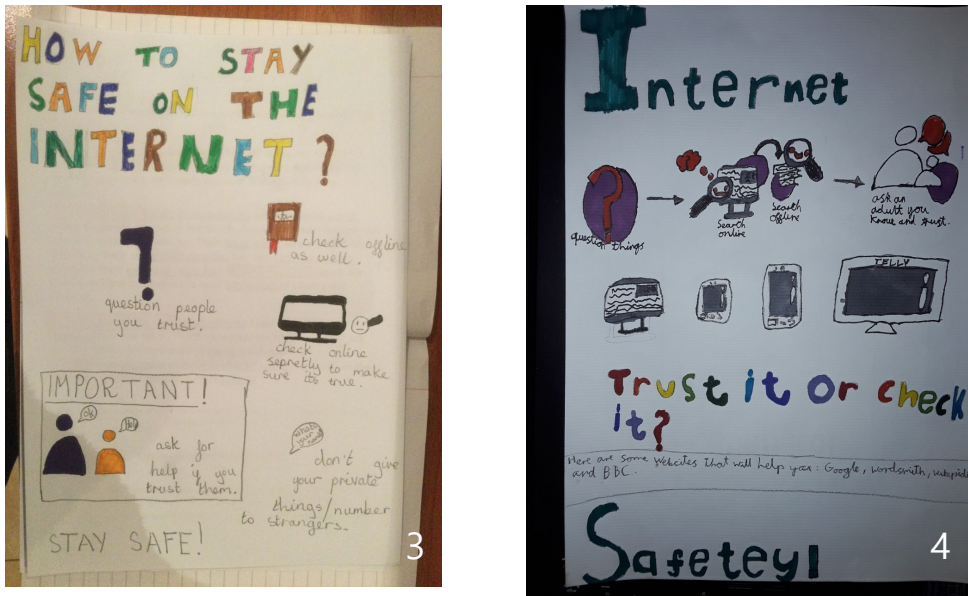
In EYFS and KS1 some of the children have taken on the role of Detective Digiduck by creating their own duck masks and saying what they had learned from the story about being safe online. We have some fantastic posters with top-tips for staying safe online. Others chose to write an email to Wise Owl from the story saying what the story had taught them about staying safe online. Some children even completed the challenge and typed their email using their home device.



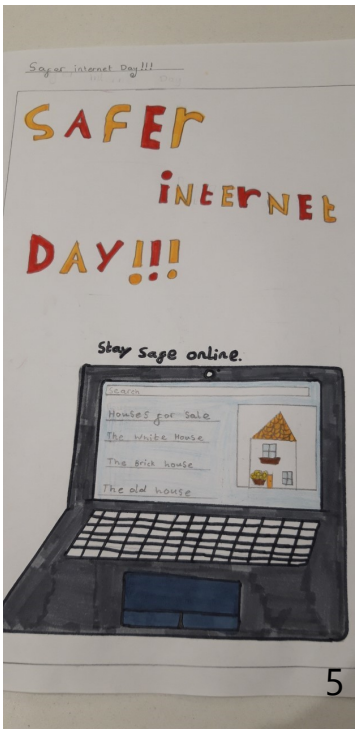
This selection Clockwise: Teddy (Pixie), Rohan (Pixie), Mia (Gruffalo), Emma (Gruffalo), William (Pixie), Aazeen (Elf) and Sprite Class



The Key Stage 2 children have taken on the role of online detectives and created wonderful eye-catching E-safety posters. They have thought carefully about whether they can **trust** information online and the different ways that they can check if information is reliable.



This selection: 1 Liliana (Hippogriff), 2 Enzo (Phoenix), 3 Zi (Phoenix), 4 Isabela (Phoenix), 5 Lucy (Hippogriff)



[More > Resources from Kent Police to help adults discuss a safer internet with their children](#)



Around School

Happy Birthday

Everyone at Slade would like to say happy birthday to the children and adults celebrating over the February Break.

Friday 12 February: Milo (Dragon)

Saturday 13 February: Miss Meers

Sunday 14 February: Maisie (Pegasus)

Monday 15 February: Vishnu (Griffin), Darcy (Elf)

Wednesday 17 February: Freya (Pegasus)

Friday 19 February: Harry (Griffin), Mrs Arnold

Saturday 20 February: Tilly (Wyvern)



Parent Governor Nominations

Last week, Simon Griffiths wrote in the newsletter about the fantastic opportunity to get involved in life at Slade through becoming a Parent Governor.

Time has not run out for you to consider becoming a Parent Governor here at the school, where a vacancy has recently become available.

If you are interested, all of the information you need is a click away, the link is below and includes the online nomination form, for either yourself, or someone who you feel would be the best person for the role (just make sure they are aware of the nomination and are happy to stand first!)

Nominations can be made up to midday (12:00) on the first day of Term 4, Monday 22 February.

For all of the information and forms > [Parent Governor Nominations](#)

Back to School Survey: Your Key Questions

Miss Garrett would like to thank all of the parents and carers who have already submitted the 'Back to School' in Term 4 survey.

Everyone at school is desperate for the time when we can welcome everyone back in through the gates when it is deemed safe to do so.

We do understand though, after such a disrupted time since mid March 2020, that children and adults alike can have lots of different feelings about the slow, steady return to normal. The survey is an opportunity for you and your child to ask questions about what returning to school once the Government say that this is possible means to them and to share any worries or concerns that you and they may have.

If you haven't yet returned the survey, please do so by clicking on the link below.

The deadline for responses is Sunday 21 February, just before the start of Term 4.

Survey by Microsoft Forms > <https://forms.office.com/Pages/ResponsePage.aspx?id=KYD->

Celebration Assembly

Click on the Slade Stream link below to enjoy today's Celebration Assembly.

<https://web.microsoftstream.com/video/40d43635-e108-458b-8c7d-d70ec404b89e>

We hope your children enjoy watching the weekly look back at successes across the school.



Reading Corner



Buster's Book Club

Mrs Mawson has very kindly agreed to continue with Buster's Book Club, remotely, until we return to school. On a Wednesday, record your reading minutes and then email her (CMawson@Slade.kent.sch.uk).

Remember to do this by Friday lunchtime and include your name and class.



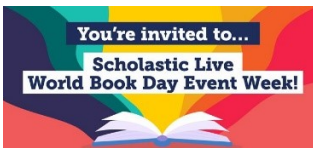
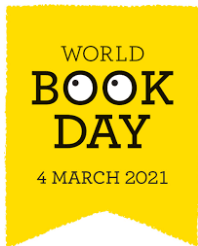
World Book Day – 4 March 2021

It's that time of year again...World Book Day approaches...

Watch out for information in the first week of next term with more details. Everyone is invited to dress up as a book character, whether you are working at school or from home, so get planning your costumes over the half term!



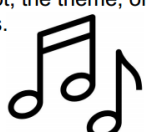
Throughout the week beginning 1st March, Scholastic are streaming reading events. You need to register to join these using this link:

<https://shop.scholastic.co.uk/scholastic-live-world-book-day>



Reminder: Make a note of when they are so you remember to join the action!

A few more Reading follow up ideas:

CARTOONIST	DETECTIVE	SONGWRITER
Design a cartoon or comic strip depicting a scene. 	Who or what in the story would you investigate if you were a detective? Write a report with an analysis and a series of recommendations. 	Use the tune of a song you're familiar with and write the lyrics based on the plot, the theme, or a few characters. 

Join Jack

Don't forget to let us know how you are doing with your reading bingo cards and your family reading treasure hunt game over the February break.

In our first newsletter back later in the month we will be sharing the bingo success of Jack in Sprite Class - Join Jack and let us know your stories.

Oak Academy Literacy Trust Author of the Week

Konnie Huq



This week's free to read or listen to book is *Cookie, The Most Annoying Boy in the World*, by this week's Author of the Week, Konnie Huq

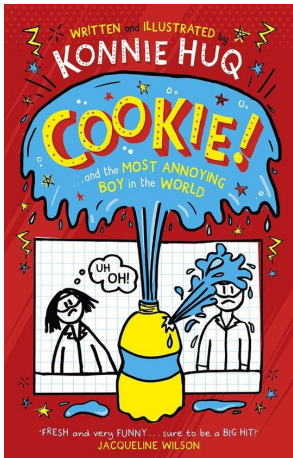
There is also an exclusive interview with Konnie, who also illustrates the series of 'Cookie' books.

In the interview, the author and TV presenter discloses her poignant reasons for her choice of favourite book and also tells readers which book character she would most like to be.

Watch, Read, Listen and Do with the Oak Academy Literacy Trust Author of the Week:

[Meet Konnie Huq](#)

[Visit the Free Library](#)





Focus on Year 6

Through the Magical Door

Over the last fortnight, Year 6 have been writing about 'Magical Doors' as part of their English learning.

They have created poetry, written descriptions of what it would be like walking towards a magical door as well as making up their own portal stories and created their own doors.

Thankyou to Orla, Anya, Mrs Pearson, Mr Osborne and Miss Lidlow for sharing these examples with the school:

I Opened The Magical Door...

Anya in Hydra Class wrote this wonderful poem:

I opened the magical door and saw a beautiful fountain spouting water that was journeying back and forth.
I opened the magical door and saw a rainbow twisting and turning in the wind, illuminating the meadow.
I opened the magical door and saw a faraway land lost in joy, I was struggling to hide a smile myself.
I opened the magical door and saw the sun setting on the hillside, the last few rays of light flickering.

I opened the magical door and saw golden stars shimmering, taking over the night sky.
I opened the magical door and heard screeching high-pitched whistles, almost enough to deagen any living thing.
I opened the magical door and smelt a wondrous, exotic fragrance, so very sweet and tempting.
I opened the magical door and touched a flowing satin cloak, as soft as a flower petal.
I opened the magical door and found glistening silver pebbles, rough on one side but smooth on the other.



The children in school as part of the two Year 6 bubbles are keen to share their artwork currently adorning the display wall in Griffin Class.

These are their ideas and designs of what a magical door would look like.

Would you be tempted to push open any of these doors, what do you think you would find?

I opened a magical door and...

I opened a magical door and felt the wall of an ancient, study, stone castle as tall as the sky, leaning over me as a comfort

I opened a magical door and saw the marvellous moon beaming back at me, graciously floating across the dark night sky with the small bright stars following slowly behind

I opened a magical door and heard the bizarre Amazon rainforest being roamed with animals little and big streaming around on high precaution

I opened a magical door and tasted the sour, sharp and heavy rain dancing hard on my tongue with a powerful rhythm

I opened a magical door and smelt a hot chocolate, steaming nicely by an open fire where blankets and rugs lay on the floor ready for someone to feel sleepy

By Orla (Griffin Class)

Around School at Home



Double Delight

Many congratulations to both Jackson and Harrison for recently passing their latest karate grading, the assessment taken out for participants who are ready to move up through the levels of the martial art. This, as you would expect from 2020/21 was a grading with a difference.

The boys have continued their karate lessons throughout lockdown under the tuition of Carman from Suma Karate, our Friday evening karate club provider. The lessons have taken place remotely via Zoom.

That can not be easy, but it hasn't proved to be a barrier for Jackson and Harrison, who tell us, 'It is harder learning karate on zoom because sometimes the screen freezes and because it's more difficult to see the teacher and for her to see us and make sure we are doing the moves correctly.'



They were doing everything correctly as their grading results prove: they both passed on a zoom assessment session last week and moved up from second green to blue belt (Jackson) and from yellow to orange belt (Harrison).

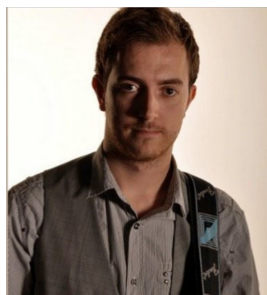
Home learning karate can lead to some interesting conversations to unsuspecting ears though since karate is not a silent activity. Mum takes up the story, 'I have very much enjoyed listening to them doing their lessons at home. Whilst I have been on work video calls in another room lots of my colleagues have been confused by the shouts of "huh" and "Kiai" in the background!'

Understandably, mum and dad are very proud of the boys' success, even more so because of the unusual learning circumstances as their home has been transformed in to a gym for the lessons. They, and everyone at school would like to congratulate both Harrison and Jackson, not only for their results, but also for the determination and perseverance they have shown.



A Future Guitar Great

We are equally delighted for another online learner, Oliver, who has passed the Trinity Grade 2 exam for his guitar playing.

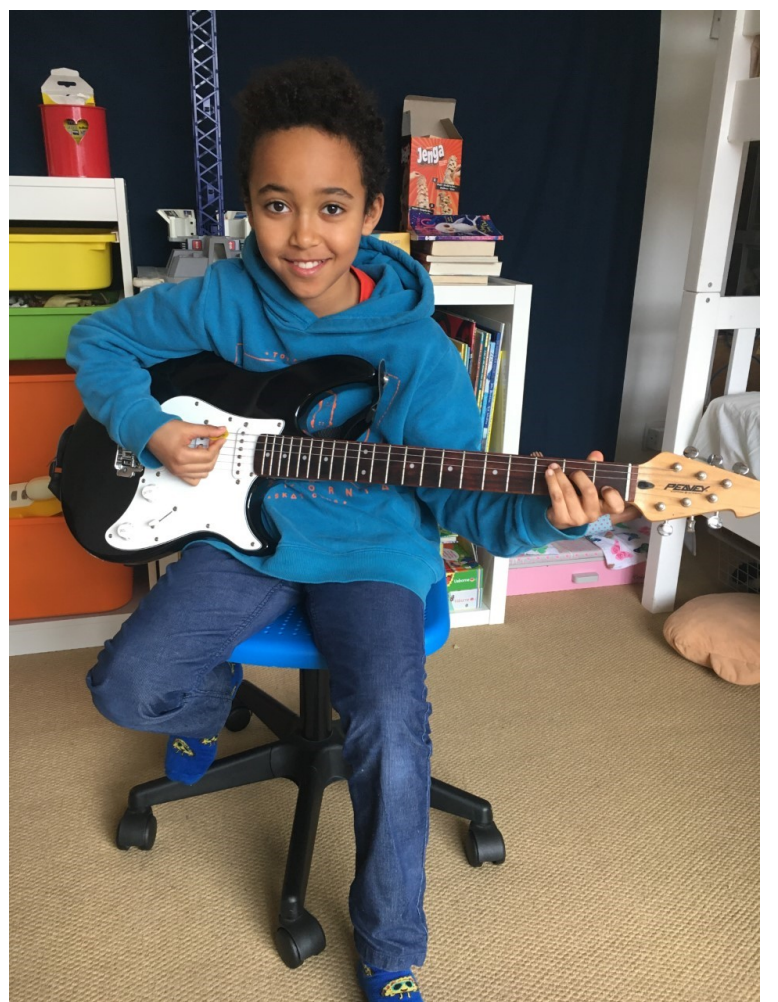


Oliver took up lessons before lockdown through Music Station in Bank Street with teacher Phil Hodge (left) who came in to school on a Wednesday. Phil and Oliver have continued their sessions together since last March during the time where in school or in studio lessons were not possible, virtually through video link.

It seems obvious, just looking at the picture of Oliver, that he loves picking up his guitar and playing.

Oliver's mum tells us, 'Oliver really enjoys playing, he practices every day and picks up his guitar very often just to play a tune. His favourite song is All Star by Smash Mouth. For the exam he presented three songs which we recorded on video at home and submitted online. We got a result last week and Oliver is very pleased with it. All the hard work paid off.'

It certainly has, well done to Oliver from everyone at Slade. We can't wait to hear you play when we can return to school.





Slade Stats.

Over a school year, we are due to be open for 190 days which equates to 380 sessions (morning and afternoon.)

Attendance is affected if a pupil is not present at school for any whole session including registration.

The class with the best attendance each week will win Attendance Ted.

Attendance Target.

97%

Attendance This Week.

—
%

Attendance This Year.

97.3
%

Registers are taken 10 minutes after the school gates close for your child's yeargroup.

It is important that the children are at school on time every day to prevent disruption and upset to their day and for the rest of their class and to prevent unnecessary crossing in to bubble groups by adults escorting late children.

Punctuality Pup is awarded to the class with the best punctuality each week.

Pupils late this week.

—

Find out the winners of Attendance Ted and Punctuality Pup every Friday afternoon on [Twitter](#)

Cool to be Slade

Thankyou to Josie, who sent in the picture used on our front cover today.

She wrote to Miss Lidlow, stating that she had been doing some snow art on her daily walk at the beginning of the week.





Dear Parents & Carers

Every parent and carer is entitled to access our Slade App and desktop dashboard from Arbor. By signing up you will be able to access personal information relating to your child as well as a one station stop for finding all of our communications to you personally, your child's class or yeargroup as well as all school letters, payment for special lessons and school trips and booking for parents evenings and all ticket events at school.

All we ask is one thing: please take the time to read emails sent to you, we try to make sure that everything you are sent relates to your child, so nothing is irrelevant. If you would like further information on any email we send, please contact the class teacher or the school office for assistance.

We also encourage you to follow us on Twitter, we post reminders, useful information, live updates from school and other community events of interest.

Don't miss out, or let your child miss out, please keep up to date with everything Slade via Arbor and Twitter.

Date of Communication	Subject	Sent To
Monday 8 February	In School Provision Closed	Critical Worker Parents
Monday 8 February	Monday Assembly	All School
Monday 8 February	Free School Meal February Break Vouchers	Selected Parents
Tuesday 9 February	In School Provision Closed	Critical Worker Parents
Tuesday 9 February	Safer Internet Day, Kent Police Resources	
Wednesday 10 February	In School Provision Today	Critical Worker Parents
Wednesday 10 February	E-Book Home Reading	Sprite Class
Wednesday 10 February	E-Book Home Reading	Wyvern Class
Thursday 11 February	In School Provision Today	Critical Worker Parents
Friday 12 February	Monster Phonics Sign In	Year R and 1 Parents
Friday 12 February	E-Book Home Reading	Elmer Class

More > Follow us on Twitter <https://twitter.com/SladePrimarySch>

COVID-19

If your child shows symptoms of COVID-19 you should:

- Stay at home, do not attend any other place out of the household. This applies to everyone in the household. Telephone 111 if you require advice
- Get a COVID-19 test for the symptomatic person, via the [gov.uk](https://www.gov.uk) website
- If the test comes back with a positive result, inform school immediately so we can invoke suitable measures. This can be via email if out of office hours, during the weekend or in the holidays: C19@slade.kent.sch.uk

Any group who is sent a 10 day self isolation notification should continue their home learning via the Microsoft Teams page, accessible though the school website and Teams App.

Please contact the class teacher via the class email address if you have any questions about this home learning.

Tonbridge, the rest of Kent and the whole of England is now operating under Lockdown conditions

Please follow the law and stay home unless totally necessary. Click here for the guidance



For your Diary

Next Week :

Day	Event
Monday 15 February	February Break School Closed to all Pupils*
Tuesday 16 February	February Break School Closed to all Pupils*
Wednesday 17 February	February Break School Closed to all Pupils*
Thursday 18 February	February Break School Closed to all Pupils*
Friday 19 February	February Break School Closed to all Pupils*


* Including Critical Worker and vulnerable children and families. Places for Term 4 must be booked and approved in advance via office@slade.kent.sch.uk.

In accordance with Government Lockdown guidance, please stay at home where at all possible .

Extra Curricular Clubs Next Week :

MONDAY	All Clubs, Extra Curricular Activities and Narnians Wraparound suspended in Term 3
TUESDAY	All Clubs, Extra Curricular Activities and Narnians Wraparound suspended in Term 3
WEDNESDAY	All Clubs, Extra Curricular Activities and Narnians Wraparound suspended in Term 3
THURSDAY	All Clubs, Extra Curricular Activities and Narnians Wraparound suspended in Term 3
FRIDAY	All Clubs, Extra Curricular Activities and Narnians Wraparound suspended in Term 3

Further Ahead :

Monday 22 February and Until Notified Otherwise	First Day of Term 4 National Lockdown - Remote Registration and Learning via Microsoft Teams The school building is closed to all pupils except to valid Critical Worker's children* * <i>Places must be booked and approved in advance via office@slade.kent.sch.uk .</i> <i>In accordance with Government Lockdown guidance, please stay at home where at all possible .</i>
Monday 1 March - Friday 5 March	Book Week - See Page 5 Register here: https://shop.scholastic.co.uk/scholastic-live-world-book-day
Thursday 1 April	Last Day of Term 4
Monday 4 April - Friday 16 April	Easter Holidays - School Closed to all pupils
Monday 19 April	First Day of Term 5 - Summertime at Slade! 
Wednesday 21 April & Thursday 22 April	National Child Measurement Programme and Vision Screening - EYFS Classes*** *** More information will be provided by the NHS team involved nearer the time
Monday 3 May	National Holiday - School Closed to all pupils

More > Follow us on Twitter www.twitter.com/sladeprimarysch