



Inside your newsletter this week:

Page 2 : Mrs Slade

Page 3 : This Week at Slade

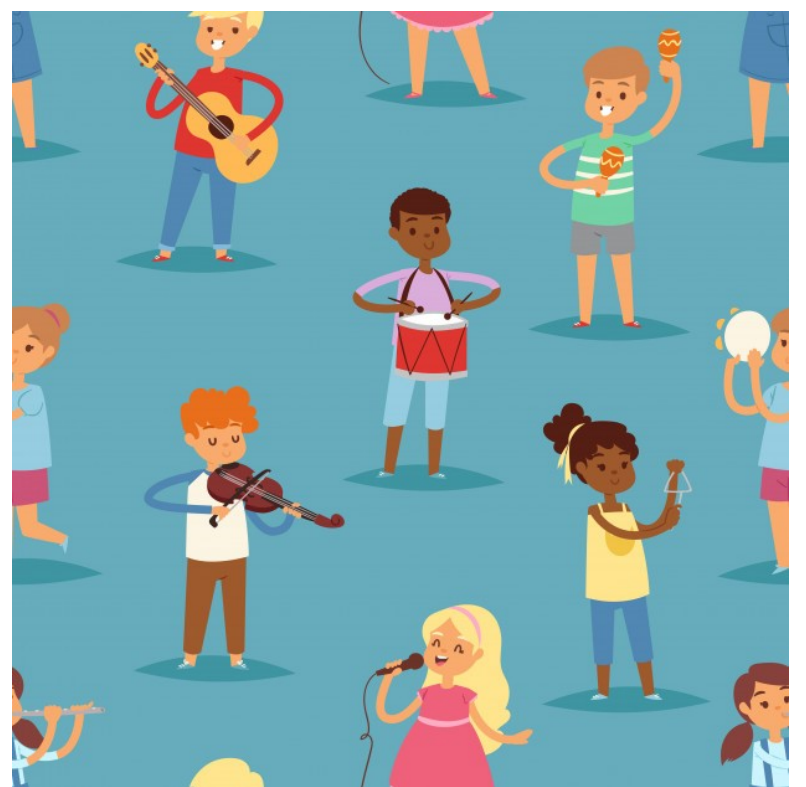
Page 4 : Around School

Page 5 : Reading Corner

Page 6 : Slade Stats

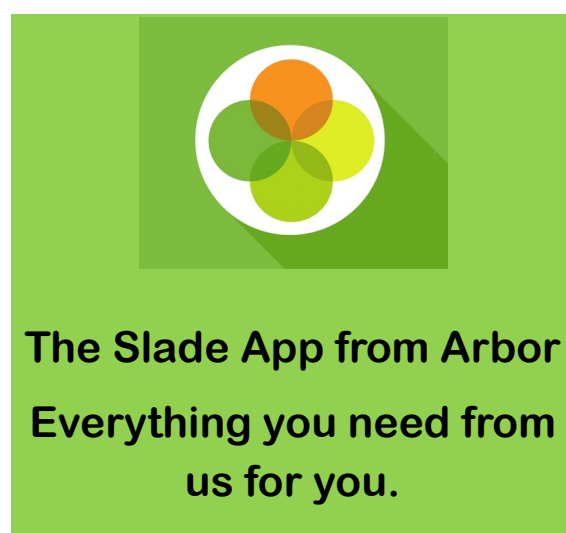
Page 7 : Our Communication to You

Page 8 : Coming Up...



[Take part in the Spring Concert: See Page 3](#)

Slade Primary School Newsletter 2020/21 Term 5 Issue 1 / Friday 23 April 2021





From the Headteacher

Karen Slade

Dear Parents and Carers,

Welcome to the start of Term 5 everyone!

I trust that you all had an enjoyable, restful Easter break and were able to enjoy some socially distanced downtime with friends and family.

It has been lovely to see the children enthusiastically return to school this week and reconnect with their friends in the spring sunshine. All children have quickly settled back in to their routines with some fabulous learning taking place across the school. For example, Year 3 were welcomed into school on Monday by Hogwarts staff; Reception children have been writing holiday recounts; Year 6 have been learning all about Fair Trade; and all children across the school have re-embarked on their daily mile training! A very busy week for everyone!

A mud free Forest School was up and running again this week with many of the classes enjoying their time down in the woods. The children have had a fabulous time exploring the new activities that were on offer for them and seeing some of the changes that have been made over the holiday. A huge thank you to our PTA committee who earlier this year successfully applied for a grant from the Kent Community Fund specifically for our Forest School, more details of which follow on in this newsletter!

On Wednesday this week KCC carried out a monitoring visit of our Road Crossing Patrol which Mr and Mrs Dolley both passed with flying colours. Well done Team Dolley! However, concerns were raised regarding the safety of children on scooters when using the crossing, particularly regarding them scooting down the hill from the Castle Car park with the risk of them being unable to stop and ending up in the path of oncoming traffic. In addition, we were informed that all children with scooters should be dismounting and wheeling their scooters across the road when using the patrol. Therefore, please will you reinforce these important safety messages with your child and ensure that this guidance is followed from the start of next week. Thank you.

As you will see when you read on in the newsletter, attendance this week is 97% which is really pleasing to see; thank you and well done for helping us to achieve this target. A reminder that the school attendance policy, including a Covid addendum, can be found on the school website and also includes information regarding requests for absence in term time and why such absences will only be authorised in exceptional circumstances.

We currently have a vacancy for a Midday Supervisor in school and are in the process of recruiting to this team. Do get in touch or catch me on the gate to find out more if this is something that you might be interested in. Details of the application process can be found on the Kent Teach website.

A reminder that, as I shared in my newsletter on 6 November 2020, our final INSET Day of the year is on Friday 11 June when staff will be undertaking training in 'Talk for Reading'. School will therefore be closed to pupils on this day.

Next week I will provide an update on arrangements for reporting to parents, including parent consultations, during the remainder of the year. Watch this space!

Take care, stay safe and be kind x

Karen Slade



This Week at Slade

Welcome to Slade, Keeva and Daisy

This week, we were delighted to welcome Keeva and Daisy and their family to Slade.



Keeva joins up with Mrs Stephens, Mrs Berill and the rest of Hippogriff Class in Year 3, whilst Daisy has started with our youngest learners in Gruffalo Class and Mrs Hitchcock.

We extend our warm welcome to Keeva and Daisy's family, with who we hope to have a long and happy relationship.

Spring Concert 2021

Mrs Stephens is thrilled to announce that this term we are planning on creating a Virtual Spring Concert.

This will consist of a video to showcase all of the wonderful music in our school.

As well as group contributions from school, the concert will be further enhanced if we are able to include performances from individual children, paired or group performances from any children who play an instrument (including voice).



If your child would like to be included in the concert, we would love to invite you to send a video of them performing alongside the title of their piece to school by Friday 7 May.

Mrs Stephens and her team will then collate the videos into a virtual concert, which will be available to stream towards the end of Term 5.

Send your child's performance via email to school via this link: [**Spring Concert 2021**](#)

Cycle Permit Scheme Now Operational

Thankyou to everyone who has completed and sent back their cycle permit agreement form.

Please note, this scheme is now operational and you will not be able to park a bike in school from Monday if a cycle permit scheme form hasn't been completed and submitted.

You can still do so. Please see your Arbor email inbox from Thursday 1 April for details.



EYFS21 Our New Intake for September

Thankyou to all of the parents and carers who have already replied with their decision after National Offer Day last Friday. We are really pleased to say that we have already received over 62% of these replies.

If you received an offer to join us here at Slade from September and are yet to send in your decision please be mindful that the deadline is Wednesday 5 May. All the instructions on what to do next are on your welcome email sent by us last Friday.

Thankyou also to everyone who have already sent back their admission form (68% returned already!)

Quick replies of this form help us to start and make proper and complete preparations for the children's first days and is really appreciated by everyone involved here at Slade.

[**More > EYFS 2021 Admissions at Slade via the school website**](#)



Around School

PTA News

Kerry Taylor-Smith, PTA Chairperson

We hope that everyone had a lovely Easter break, there's lots going on over here at PTA central...

Kent Community Fund Grant

Forest School: earlier this year, the PTA applied for a grant from the Kent Community Fund to help towards setting up the Forest School, and we're pleased to say we've been awarded £3,274.00 from the High Hilden Fund.

Keep an eye out for how Miss Hall intends to use the money to expand our fabulous Forest School.



More > [Find out more about the High Hilden Fund via kentcf.org.uk](https://kentcf.org.uk)



Easter Raffle

Easter Raffle: thanks to everyone who donated towards and bought tickets for the Easter Raffle – we raised over £335!

Uniform Sales and Donations to Resume

We are very pleased to say we are able to resume uniform sales.

If you'd like to place an order, please email your requirements to sladepta@yahoo.co.uk by Wednesday 28 April.

Price list available here: <https://www.facebook.com/groups/sladepta/permalink/10164106967105007>

We are also able to take donations again, we are very grateful to anyone able to donate undamaged uniform items.

Please leave them at morning drop off or collection times Monday to Thursday next week (26 – 29 April). There will be collection bins at each of the yeargroup entrances to school.

Forest School



Woodland Timetable for Next Week

Monday : Elf (Mrs Hill), Griffin (Mr Osborne), Hydra (Miss Lidlow)

Tuesday : Pegasus (Mr Louth), Elmer (Mrs Pearson), Hippogriff (Mrs Stephens and Mrs Berill)

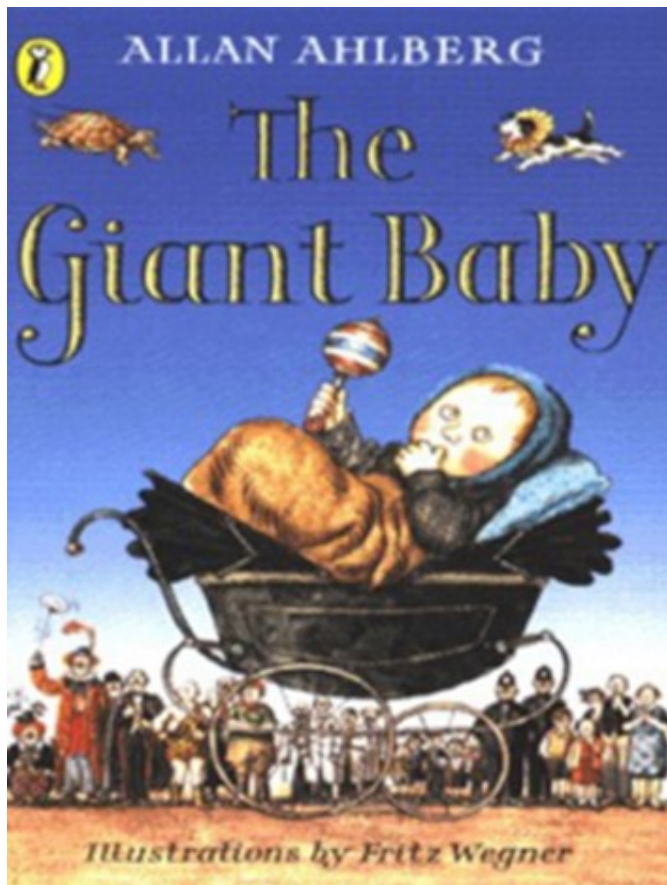
Wednesday : Phoenix (Mr Duffin), Wyvern (Mr Watts)

Reading Corner



Mrs Mawson's Book of the Week

The Giant Baby by Allan Ahlberg



Alice always wanted a baby brother.

When a giant baby is left one night on the Hicks' doorstep, Alice is delighted - but her parents are horrified.

How will they cope?

Reporters, social workers, circus owners and scientists flock so see the infant phenomenon, some with evil designs on the baby.

Originally this story started life as a play and is packed full with humour and lively speech to engage the reader.

It also contains many black and white illustrations by Fritz Wegner.

Oak Academy Literacy Trust Author of the Week

Andy Prentice and Eddie Reynolds

You may remember, in our Newsletter from 19 March, that we featured the recently published book **Climate Crisis for Beginners**. One of our parents, Dr Gambhir, contributed to the making of the book using his 15 years experience working in the field. We are pleased to see that the authors of the book who called upon Dr Gambhir's knowledge are this week's Literacy Trust Oak Academy Online Library Authors of the Week.



Andy Prentice and Eddie Reynolds (left) are featured and they give an exclusive interview as well as sharing their favourite environmental related reads, including a book of poetry for those of you who like poems.

Thankyou to the families who have contacted us to say that they have used the free library and have ordered and bought some of the books that have been featured, including **Climate Crisis for Beginners**. By visiting the Oak Academy library this week, you can flick through and read the book for free in addition to hearing from the authors.

Website lovereadfor kids.co.uk recommends the book, saying, 'An excellent guide for young people to the major issue of our time Full of clearly presented facts and figures, plus useful advice on ways they can make a difference, this is an excellent introduction to the climate crisis for young readers. The language is simple and backed up throughout by illustrations making complex issues easy to understand and digest.'



More > [Meet Andy and Eddie and Read their Book](#)

[Visit the Free Library](#)



Slade Stats.

Over a school year, we are due to be open for 190 days which equates to 380 sessions (morning and afternoon.)

Attendance is affected if a pupil is not present at school for any whole session including registration.

The class with the best attendance each week will win Attendance Ted.

Attendance Target.

97%

Attendance This Week.

97.8
%

Attendance This Year.

97.3
%

Registers are taken 10 minutes after the school gates close for your child's yeargroup.

It is important that the children are at school on time every day to prevent disruption and upset to their day and for the rest of their class and to prevent unnecessary crossing in to bubble groups by adults escorting late children.

Punctuality Pup is awarded to the class with the best punctuality each week.

Pupils late this week.

11

Find out the winners of Attendance Ted and Punctuality Pup every Friday afternoon on [Twitter](#)



Dear Parents & Carers

Every parent and carer is entitled to access our Slade App and desktop dashboard from Arbor. By signing up you will be able to access personal information relating to your child as well as a one station stop for finding all of our communications to you personally, your child’s class or yeargroup as well as all school letters, payment for special lessons and school trips and booking for parents evenings and all ticket events at school.

All we ask is one thing: please take the time to read emails sent to you, we try to make sure that everything you are sent relates to your child, so nothing is irrelevant. If you would like further information on any email we send, please contact the class teacher or the school office for assistance.

We also encourage you to follow us on Twitter, we post reminders, useful information, live updates from school and other community events of interest.

Don’t miss out, or let your child miss out, please keep up to date with everything Slade via Arbor and Twitter.

Date of Communication	Subject	Sent To
Friday 16 April	Primary School EYFS21 National Offer Day	
Tuesday 20 April	Third Space Learning Maths Intervention	Selected Parents
Tuesday 20 April	Baby Pictures	Year 3 Parents
Wednesday 21 April	Year 5 Open Events at Hayesbrook School	
Thursday 22 April	Spring Concert 2021	All School

More > Follow us on Twitter <https://twitter.com/SladePrimarySch>

COVID-19:

If your child shows symptoms of COVID-19 you should:

- Stay at home, do not attend any other place out of the household. This applies to everyone in the household. Telephone 111 if you require advice
- Get a COVID-19 test for the symptomatic person, via the gov.uk website
- If the test comes back with a positive result, inform school immediately so we can invoke suitable measures. This can be via email if out of office hours, during the weekend or in the holidays: C19@slade.kent.sch.uk

Any individual or group sent a 10 day self isolation notification should continue their home learning via the familiar Microsoft Teams page, accessible though the school website and Teams App.

Please contact the class teacher via the class email address if you have any questions about this home learning.

Despite recent relaxations as part of the Government’s roadmap, most COVID-19 restrictions are still in place in Tonbridge, the rest of Kent and across the whole of England.

Please make sure you are aware of the current regulations and laws to keep yourself and your family safe as well as respecting our request to maintain a 2 metre distance between yourself and other families when walking to and from school as well as wearing a face covering when waiting at the school gates.

More > [The latest COVID-19 Regulations from the Government ‘Roadmap’ out of Restrictions](#)



For your Diary

Next Week :

Day	Event
Monday 26 April	PTA Used Uniform Donation Collection See Page 4
Tuesday 27 April	PTA Used Uniform Donation Collection See Page 4
Wednesday 28 April	PTA Used Uniform Donation Collection See Page 4
Thursday 29 April	PTA Used Uniform Donation Collection See Page 4
Friday 30 April	

Extra Curricular Clubs Next Week :

MONDAY	All Clubs, Extra Curricular Activities and Narnnians Wraparound suspended in Term 5
TUESDAY	All Clubs, Extra Curricular Activities and Narnnians Wraparound suspended in Term 5
WEDNESDAY	All Clubs, Extra Curricular Activities and Narnnians Wraparound suspended in Term 5
THURSDAY	All Clubs, Extra Curricular Activities and Narnnians Wraparound suspended in Term 5
FRIDAY	All Clubs, Extra Curricular Activities and Narnnians Wraparound suspended in Term 5

Further Ahead :

Monday 3 May	National Holiday - School Closed to all pupils
Wednesday 5 May	Primary School Offer Day Decision Deadline See Page 3
Friday 7 May	Spring Concert Video Performances Deadline See Page 3
Friday 28 May	Last Day of Term 5
Monday 31 May - Friday 4 June	Summer Terms Break - School Closed to all pupils
Monday 7 June	First Day of Term 6
Wednesday 9 June	Primary School (EYFS21) Reallocation Offer Day More information on what to do once an offer has been received is on the admissions section of the school website .
Wednesday 9 June	Year 6 Safety in Action Day More information will appear nearer the time
Friday 11 June	Teacher Training (INSET) Day - School Closed to all pupils
Monday 14 June	Class and Group Photographs Matthew Walker returns to school for these annual pictures.
Thursday 8 July	Kent Year 7 Induction Day Year 6 children should receive information about various events on this day from their allocated Secondary School

More > Follow us on Twitter www.twitter.com/sladeprimarysch