



Inside your newsletter this week:

Page 2 : Mrs Slade

Page 3 : This Week at Slade

Page 4 : Around School

Page 5 : Reading Corner

Page 6 : Slade Stats

Page 7 : Our Communication to You


Page 8 : Coming Up...



Slade Primary School Newsletter 2020/21 Term 6 Issue 4 / Friday 2 July 2021



Live Updates and the
Latest News
[@sladeprimarysch](https://twitter.com/sladeprimarysch)



The Slade App from Arbor
Everything you need from
us for you.



Keep in contact:
office@slade.kent.sch.uk
01732 350354



From the Headteacher

Karen Slade

Dear Parents and Carers,

What a busy week it has been!

Firstly a huge thank you to everyone who supported the PTA inaugural Scavenger Bear Hunt last Saturday, whether by being part of the volunteer organisers or by joining in the trail or even by spending lots of money on the cake stall! It really was lovely to see so many of our families enjoying themselves safely in the outdoors; a fun afternoon for all the family! All monies raised will benefit all of the children here at school as we look to improve our playground markings so a big thank you from all of us. We will keep you updated on fundraising totals in the coming weeks and I look forward to seeing some of you at the final PTA meeting of the year in the coming weeks.

On Wednesday this week, we welcomed Tel German our Local Authority School Improvement Adviser to the school for her first visit since pre-Covid times. Tel had a tour of the school, observing learning from doorways and seeing the progress that has been made since she last came to visit. She then spent time with myself and Miss Garrett followed by a virtual catch up with Simon Griffiths, Chair of Governors, to hear of all that has been achieved in recent times. She was hugely impressed by what she saw stating that Slade had come out of Covid "glowing!" Well done and thank you to all the children and staff involved!

Also on Wednesday we welcomed staff and pupils from Tonbridge School down to our Forest School as part of their Giving Day, a day when their school gets involved in local community projects whilst hopefully having fun and learning new skills too. It was lovely to see and hear them working away in the woodland, building and renovating under the watchful eye of Miss Hall. We look forward to sharing updates on their handiwork with you in the coming weeks. Special thanks to all involved; we really do appreciate you giving of your time in this way.

Then Thursday saw the whole school enjoy Slade Science Day, re-arranged from earlier this year. Children from Reception to Year 6 all engaged in experiments and worked collaboratively to investigate how rainbows are formed as they tried to answer the question 'Why do rainbows exist?' This was in addition to researching some of the lesser known unsung female scientists as well as each class solving their own scientific line of enquiry too! A huge thank you to all the staff for your enthusiasm during the day and to Miss Lipman for leading us all through the day too. Well done everyone!

Also on Thursday we were delighted to welcome Alison Burnside, Year 6 teacher in Griffin from September, into school and introduce her to staff and children especially the current Wyvern Class who she will be teaching next year. Alison will be visiting us again next week as part of her induction into the Slade family; we are very excited to have her on our team and look forward to getting to know her in the coming weeks.

Finally today saw the last of our Slade Olympians in action with Years 3 and 4 wrapping the week up on the field this afternoon. We're looking forward to hearing the results in our assembly on Monday afternoon next week!

Take care, stay safe and be kind x

Karen Slade



This Week at Slade

Slade Olympics All Wrapped-Up

The Slade Olympic fortnight is over after a lot of activity and fun. Many thanks to Mr Duffin for organising the learning topics that have accompanied the sports.

The full set of results will be announced on Monday, following the last individual races such as sprints and hurdles that took place this afternoon. Be the first to find out the winners by checking in with our Twitter feed after the weekend. The children from all yeargroups have been amazing as they have played various team games as featured again on Twitter and in last week's newsletter and taken part in the traditional sports day events yesterday and this afternoon.

They have all shown fantastic sports behaviours such as teamwork and supporting each other regardless if they were teammates or opponents. As part of the awards assembly on Monday will be the winners, not only of the sporting prizes (will the green or yellow team win out?) but as importantly the children in each yeargroup who have exhibited the Olympic Values of Respect, Excellence, Friendship, Inspiration, Determination, Equality and Courage. We look forward to celebrating each of our 420 children on Monday.



Year 5 classes Wyvern and Dragon held their team events of Rounders and Football in the wet conditions on Wednesday. Miss Meers and Miss Riseborough didn't let that dampen their enthusiasm though!

Science Day

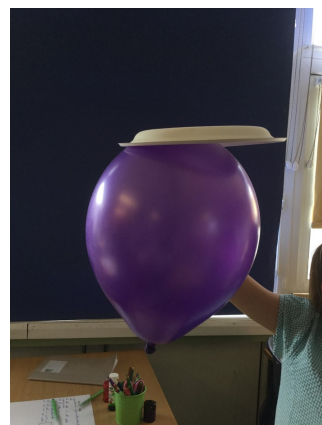
On Thursday, every class enjoyed a day of exploring and experimentation as they took part in our whole school Science Day. Each yeargroup had a class question to examine that was prompted by a child led question as well as the main learning of the day; to find out about two unsung scientific heroes, namely Jocelyn Bell Burnell (near right) and Mary Anning (right).



KS2 classes studied the life and work of Bell Burnell, who co-discovered the first radio pulsars in 1967.

EYFS and KS1 children looked at Mary Anning, Dorset coast fossilist, who between 1810 and her death in 1847 discovered many important fossils, including the one we now know as the Pterodactyl.

In the afternoon, everyone was tasked with one question: Why do rainbows exist? Each class created their own experiments to see if they could make a rainbow using simple resources such as a glass of water, natural light, a torch, a balloon and a mirror. They then had to draw their conclusions based on what they had observed.

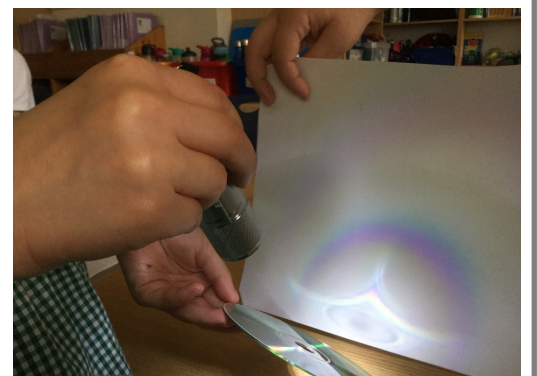


So what is a rainbow?

A rainbow is formed when light, generally from the sun, passes through water droplets hanging in the atmosphere.

As the waves of light pass through the water droplets, they change direction, resulting in a multi coloured arc.

To see a rainbow, you normally need to have your back to the sun as they usually appear in the section of sky directly opposite the sun.





Around School

EYFS National Child Measurement Programme



Kent Community Health
NHS Foundation Trust

The NHS Kent Community Health Team will be visiting on Monday and Tuesday next week to carry out the delayed Vision and Child Measurement Screen for all children in Elmer and Gruffalo Classes.

This visit was previously planned in the winter term, but was postponed due to the lockdown at the time.

Letters were sent in October 2020, where parents could opt-out of the programme.

More > [Information about the Vision and Measurement Programme via the Kent NHS Website](#)

If you wish to change an opt-out status now after reading details about the programme, you should email kentchft.schoolhealthscreening@nhs.net, otherwise the children will be seen by the nurses on Monday (Gruffalo Class) or Tuesday (Elmer Class) and results will be delivered directly to you from the NHS team in due course.

PTA News

Been on a Bear Hunt

Kerry Taylor-Smith and Jo Johnson, PTA Chairs

A huge thank you to everyone who supported the Slade Bear Scavenger Hunt – it was a really lovely afternoon and so nice to see so many Slade families enjoying the walk and the weather! We raised over £265, which will go towards our Perfect Playground campaign which aims to refresh the playground markings.

If you haven't donated yet, there's still time: <https://www.justgiving.com/campaign/perfectplayground>.



Summer Raffle

With the pandemic cancelling plans for the normal variety of summertime events usually organised and presented by the PTA, we are holding a special raffle to continue the raising of funds for the benefit of all of the children at Slade. Prizes will include vouchers for a family photograph shoot with Paul Barsby (£115), school uniform provider Paul Marchant (£25), Pottery Box (£15), Penny's Boutique (£20), Day passes for Minor Mania, a 1 hour massage with Silke Thistlewood, a bucket of booze and lots more. Tickets cost just £1.50 and can be bought alongside details of all of the prizes, which are listed on the Raffall.com website which can be viewed by clicking below.

[Buy your tickets and view all of the prizes for the PTA Raffle via raffall.com](#)

The draw for the PTA Summertime raffle will take place on Thursday 15 July at 19:00.

Woodland Timetable for Next Week

Please make sure that your child has their Forest School clothing with them to change into on each of their Woodland Session days.

Monday 5 July: Gnome, Phoenix, Dragon

Tuesday 6 July: Gruffalo

Wednesday 7 July: Sprite, Sphinx

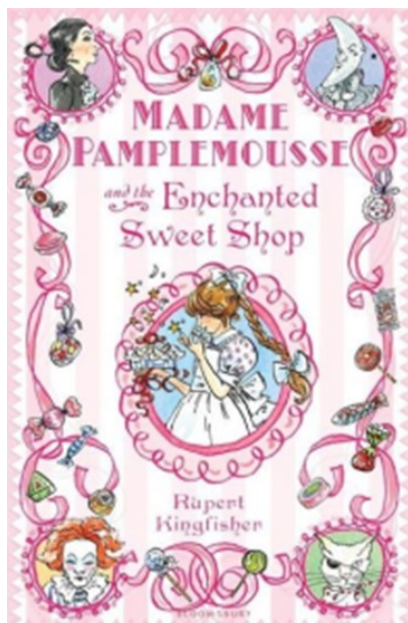
[The Woodland Timetable is also on our online calendar](#)

Reading Corner



Mrs Mawson's Book of the Week

Madame Pamplemousse and the Enchanted Sweet Shop, by Rupert Kingfisher



It is winter in Paris and Madeleine is having problems at school.

A new girl is being mean to her and Madeleine is too ashamed to ask for help. Then Madeleine meets Madame Bonbon, who owns a shop crammed with the most exciting looking sweets.

Madame Bonbon seems kind and gives Madeleine delicious chocolates to cheer her up, but the more chocolate Madeleine eats, the more she is drawn into a terrifying world from which she can't escape.

Will Madeleine's friends, Madame Pamplemousse and her intrepid cat Camembert be able to act in time to save her?

Buster's Special Prize for Hippogriff Class

Caroline Mawson, School Librarian

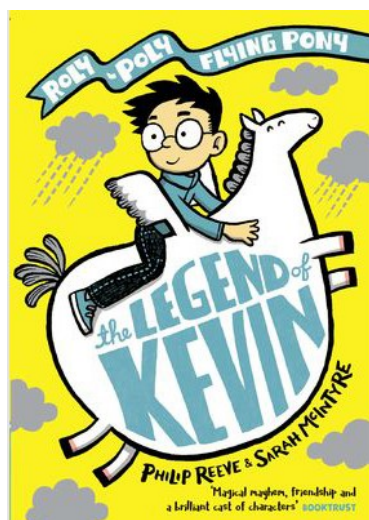
I would like to pass on a big well done to all the children, because together with other schools in Buster's Book Club we have managed to reach an amazing 4 million minutes read! The KM Charity Team will be providing the school with certificates very soon. Thankyou too, to all of our parents, carers and friends for reading and listening to the children read each week. More importantly than the Buster's Book Club is the love of reading that this fosters.

Also, more great news, Hippogriff class have been awarded a special certificate for outstanding effort.

They put in a huge push for reading the other week, and produced such a brilliant improvement which has been recognised by Buster's Book Club. Well done to them!

Oak Academy Literacy Trust Authors of the Week

Philip Reeve and Sarah McIntyre



Philip Reeve and Sarah McIntyre are the Literacy Trust Author and Illustrator of the week. They are working on their ninth book together and this week you can read and enjoy their children's story, The Legend of Kevin.

Kevin the flying pony blows in on a magical storm and - DOOF! - crashes into the balcony outside Max's flat. As the storm waters rise and the town is besieged with creatures, Max and Kevin set about putting things right. With Max's quick thinking and a constant supply of biscuits for Kevin, there's nothing this heroic duo can't achieve!

Philip and Sarah also entertain in this week's video interview.



[Meet Philip and Sarah and read The Legend of Kevin](#)

[Visit the Free Library](#)



Slade Stats.

Over a school year, we are due to be open for 190 days which equates to 380 sessions (morning and afternoon.)

Attendance is affected if a pupil is not present at school for any whole session including registration.

The class with the best attendance each

Attendance Target.

97%

Attendance This Week.

96.0
%

Attendance This Year.

97.2
%

Registers are taken 10 minutes after the school gates close for your child's yeargroup.

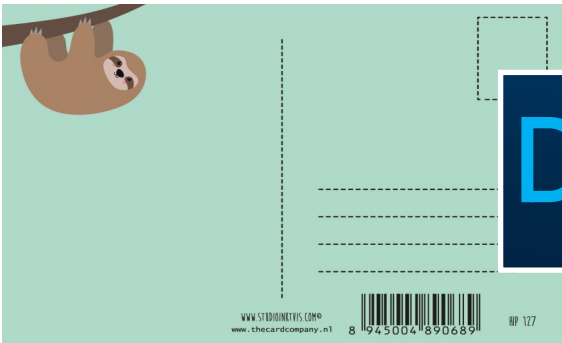
It is important that the children are at school on time every day to prevent disruption and upset to their day and for the rest of their class and to prevent unnecessary crossing in to bubble groups by adults escorting late children.

Punctuality Pup is awarded to the class with the

Pupils late this week.

12

Find out the winners of Attendance Ted and Punctuality Pup every Friday afternoon on [Twitter](#)












Dear Parents & Carers

Every parent and carer is entitled to access our Slade App and desktop dashboard from Arbor. By signing up you will be able to access personal information relating to your child as well as a one station stop for finding all of our communications to you personally, your child’s class or yeargroup as well as all school letters, payment for special lessons and school trips and booking for parents evenings and all ticket events at school.

All we ask is one thing: please take the time to read emails sent to you, we try to make sure that everything you are sent relates to your child, so nothing is irrelevant. If you would like further information on any email we send, please contact the class teacher or the school office for assistance.

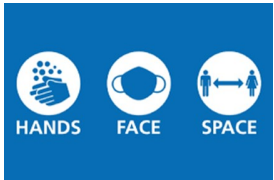
We also encourage you to follow us on Twitter, we post reminders, useful information, live updates from school and other community events of interest.

Date of Communication	Subject	Sent To
Monday 28 June	Pupil Premium Funding	Eligible Parents 
Tuesday 29 June	Slade Olympics	
Wednesday 30 June	Year 6 Activity Week: Carrotty Wood Kit List	Year 6 Parents 
Wednesday 30 June	Introducing Mrs Burnside	Wyvern Class Parents 
Wednesday 30 June	2021 Governors Survey	All Parents 
Thursday 1 July	Arbor Login	EYFS21 Intake Parents 
Thursday 1 July	Science Day	
Thursday 1 July	Virtual Settling In Sessions	EYFS21 Intake Parents 
Friday 2 July	Early Help from KCC: Starting School	EYFS21 Intake Parents 

COVID-19: Important Information

If your child shows symptoms of COVID-19 you should:

- **Stay at home, do not attend any other place out of the household. This applies to everyone in the household. Telephone 111 if you require advice**
- **Get a COVID-19 test for the symptomatic person, via the [gov.uk](https://www.gov.uk) website or by telephoning 119**
- **If the test comes back with a positive result, inform school immediately so we can invoke suitable measures. This can be via email if out of office hours, during the weekend or in the holidays: C19@slade.kent.sch.uk**



Despite recent relaxations as part of the Government’s roadmap, COVID-19 restrictions are still in place in Tonbridge, the rest of Kent and across the whole of England.

The recommendations from the DfE with regard to provision in primary schools is largely unchanged from Stage 2 of the roadmap.



Please make sure you are aware of the current regulations and laws to keep yourself and your family safe as well as respecting our request to maintain a 2 metre distance between yourself and other families when walking to and from school as well as wearing a face covering when waiting at the school gates.



For your Diary

Next Week :

Day	Event
Monday 5 July	EYFS Vision and NCMP Screening Sessions delayed since the Winter Lockdown (See Page 4)
Tuesday 6 July	EYFS Vision and NCMP Screening Sessions delayed since the Winter Lockdown (See Page 4)
Tuesday 6 July	Deadline for Ordering Class Photographs Orders can be made after this date but will incur delivery charges
Wednesday 7 July	
Thursday 8 July	Kent Year 7 Induction Day Most of these events are now cancelled. Please check with your allocated secondary school for details and for their planned alternative arrangements
Friday 9 July	EYFS21 Virtual Settling In Sessions Please see email of 1 July for times and details of the Zoom Link

Extra Curricular Clubs Next Week :

MONDAY	All Clubs, Extra Curricular Activities and Narnians Wraparound remain suspended
TUESDAY	All Clubs, Extra Curricular Activities and Narnians Wraparound remain suspended
WEDNESDAY	All Clubs, Extra Curricular Activities and Narnians Wraparound remain suspended
THURSDAY	All Clubs, Extra Curricular Activities and Narnians Wraparound remain suspended
FRIDAY	All Clubs, Extra Curricular Activities and Narnians Wraparound remain suspended

Further Ahead :

Monday 12 July - Friday 16 July	Year 6 Activity Week
Monday 12 July	Deadline for 2021 Governors Survey to be submitted See email from Wednesday 30 June
Wednesday 14 July - Friday 16 July	End of School Year Reports Released
Friday 16 July	Non Uniform Day - Donations for the Perfect Playground Fundraising Appeal
Wednesday 21 July	Last Day of Term 6

All events are subject to alteration, postponement and cancellation due to at time COVID-19 protocols.
Updates are sent via Email, appear here each week and on the school website diary: slade.kent.sch.uk