



Slade

Primary School

Inside this Issue...

- 2 Mrs Slade
- 3 Around School
- 4 COVID-19 Update
- 5 PTA News
- 6 For Families
- 7 Slade Sport
- 8 Slade Stats
- 9 Our Communication to You
- 10 Coming Up...



Slade Primary School Newsletter 2021/22 Term 5, Issue 1

Friday 22 April 2022

Slade Primary School

The Slade, Tonbridge, Kent, TN9 1HR

01732 350354

office@slade.kent.sch.uk



@sladeprimarysch



From the Headteacher

Mrs Slade

Dear Parents and Carers,

Welcome back to the start of Term 5! I hope that you all enjoyed a restful Easter break in preparation for all that is planned for the summer!

The start of this summer term has seen the children return to the school field at break times and lunchtimes and enjoy the vast outdoor space and all that it offers. It has been heartening to see all year groups enjoying their time outdoors in the early summer sunshine! The field has also been busy both before and after school with some of the outdoor clubs and activities that happen across the week taking place out there too. Thank you to all staff members who volunteer and give of their time to offer these extra-curricular activities for our children. A list of all clubs on offer this term can be found on our school website with some spaces still available. Do read on into the newsletter to find out how the boys' football team got on at their tournament on Wednesday this week.

A special welcome this week to Jill Westwood who has joined the Senior Leadership Team (SLT) in her role of School Business Manager (SBM). Jill is an experienced SBM who joins us from a primary school in Wandsworth, London. We are excited to welcome her to Slade and look forward to working together as she supports the SLT and School Governors with the strategic financial planning of the school. Jill's work days are Monday, Wednesday, Thursday, Friday and is contactable via the school office.

On Monday, each year group will be sending out an overview of key information regarding the learning that will be happening in your child's class this term. I would encourage each of you to take the time to read these in the coming days to ensure that you have all the necessary information required for the term, enabling you to support your child with their learning during the coming weeks. Thank you in advance for taking the time to take a look.

Thank you to all parents, carers children and staff for adjusting so swiftly to the new end of day pick up arrangements. It was so lovely to hear and see so many of you on the playground this week and to have the opportunity to catch up with so many of you too. An overview of these arrangements was sent out earlier this week via Arbor email. All routines are under constant review by members of the SLT with any changes being made as and when necessary following which individual year groups will be informed of any such changes.

At the start of this new term a reminder of our expectations with regard to school uniform; all of our children are expected to wear regulation school uniform to school every day. This includes black school shoes; trainers are not permitted unless in exceptional circumstances following a discussion with either myself or Miss Garrett. Hair should be a natural colour and tied up if longer than collar length. Any hair accessories should be discreet, not brightly coloured and jewellery should not be worn with the exception of small studded earrings which should be removed for PE lessons. Thank you for your help and support in reinforcing these regulations with your children.

A reminder too that next Thursday is the date for this term's 'Parent Teacher Association' (PTA) meeting which we are planning to hold in person here in the school hall; read on into the newsletter for further details. I look forward to seeing you there!

I hope you all have a lovely, safe weekend.

Karen Slade

Around School



Welcome to Slade, Phoebe, Alice and Ritvik

Everyone at Slade would like to welcome Phoebe, Alice and Ritvik to Slade following their first week with us.



For Phoebe and Alice it is a very welcome back home as they return to their class they left in Year 3 and everybody in Griffin Class in Year 6 was thrilled to see them again after such a long time. It has taken the girls no time at all to settle back into the Slade family. We are delighted to see them again around the school.

Ritvik has joined Phoenix Class and has settled into his new surroundings with an eager smile! Mr Duffin is very impressed with how well Ritvik has started life at Slade, and how confidently he has thrown himself into new challenges.

We hope that the children have all enjoyed themselves this week. Our warm welcome is extended to the parents and families of Phoebe, Alice and Ritvik with who we look forward to sharing a long, happy and successful relationship.

And Welcome Jill!

We are equally delighted to say hello and welcome on board to Jill Westwood, our new School Business Manager.

Jill started with us on Wednesday, although she has got to know the team in four visits before Easter. Jill joins us with vast experience of over 30 years working in roles in Primary and Secondary Schools, starting as a Building Construction Manager then as Schools Liaison Manager before moving into the School Business Manager in schools across London. She is presently moving to join her family, including her granddaughter, in Kent and is looking forward to meeting the whole Slade community.



Easter Improvements

Over the Easter holiday, caretaking team Mr Dolley and Mr Humphrey kept themselves very fit and very busy giving the area between the main playground and Deacon House a deserved refreshed look.



The ground, which was grassed, but bare with mud patches and a damp look about it has now been given a new lease of life with shingle being laid and the area given a repurpose - which will eventually see new equipment for the older KS2 children to use at break and lunchtimes.



Thanks also to Mr Osborne and Miss Lidlow who helped Ray and Adam with the movement of the shingle from its delivery point at the main gate through to its laying at Deacon House, all done in the pouring rain!



Around School



Latest COVID-19 Guidance

As you are aware, on Tuesday 29 March, the government set out the [next steps for living with COVID-19](#) in England from Friday 1 April. The updated guidance advises:

children and young people who are unwell and have a high temperature should stay at home and avoid contact with other people. They can go back to school when they no longer have a high temperature, and they are well enough to attend adults with a positive COVID-19 test result should try to stay at home and avoid contact with other people for 5 days, which is when they are most infectious. For children and young people aged 18 and under, the advice is for 3 days

The link below provides detailed guidance of symptoms in children and what steps to follow should your child display any such symptoms.

<https://www.nhs.uk/conditions/coronavirus-covid-19/symptoms/coronavirus-in-children/>

The guidance outlines the following recommended advice for children.

What to do if your child has symptoms:

Your child should try to stay at home and avoid contact with other people if they have symptoms of COVID-19 and they either:

- *have a high temperature*
- *do not feel well enough to go to school or do their normal activities*

They can go back to school when they feel better or do not have a high temperature.

If your child has mild symptoms such as a runny nose, sore throat or mild cough, and they feel well enough, they can go to school, college or childcare.

Encourage your child to cover their mouth and nose with a tissue when they cough or sneeze, and to wash their hands after using or throwing away tissues.

Most children who are unwell will recover in a few days with rest and plenty of fluids.

There is [guidance for people with COVID-19 symptoms and other respiratory infections on GOV.UK](#).

If your child is absent for any reason it is essential that the school be informed.

The absence can be reported via your Arbor App in App Messaging, via email to the school office or via telephone (Option 1 on 01732 350354).

Please remember to inform us each day your child is absent.

Please also remember that help is available from NHS 111 if you're worried about your child or you are not sure what to do.

This message was first sent via Arbor email earlier this week.



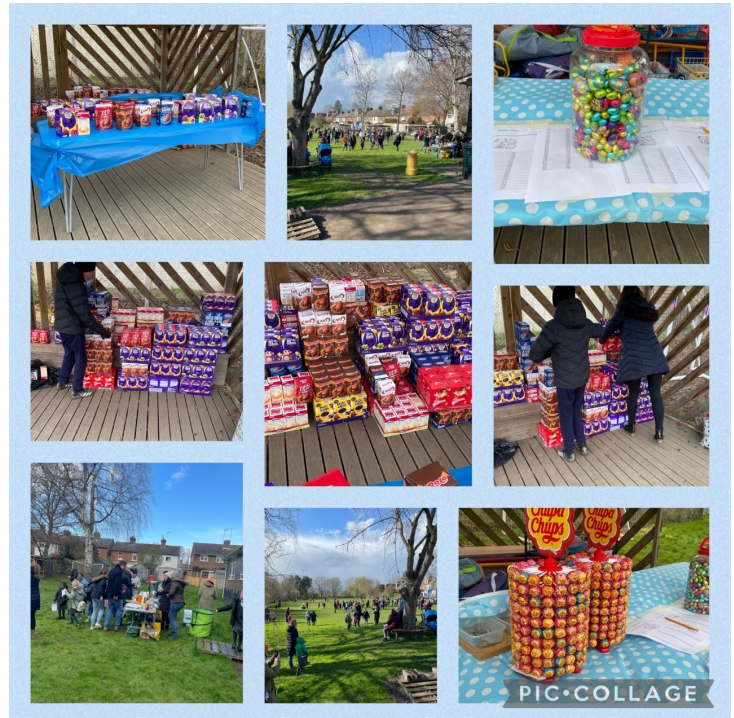
News from the PTA



Easter Egg Hunt

Jo Johnson, PTA Chair

Thank you to everyone who joined us at the end of last term and took part in the Easter egg hunt on the last afternoon of term. Despite the cold weather a great total of £ 474.66 was raised , which will go towards the updating of the outdoor learning resources for all of the children at school. We hope you had as much fun as we did and thank you for your continuous support.



Prize Winners

Many congratulations to Hector and Katie who won these super sized eggs following a draw of the completed Easter Hunt competition entries. Both children promised to share their eggs with their family - we need to see if they have!



Also winning a prize from the PTA Hunt were Harriet and Mia, who won these jars of mini chocolate eggs for guessing the number of eggs contained.

Well done to you all!

In School PTA Meeting

For the first time since the pandemic, we are really pleased to be hosting the regular PTA meeting in the main school hall.

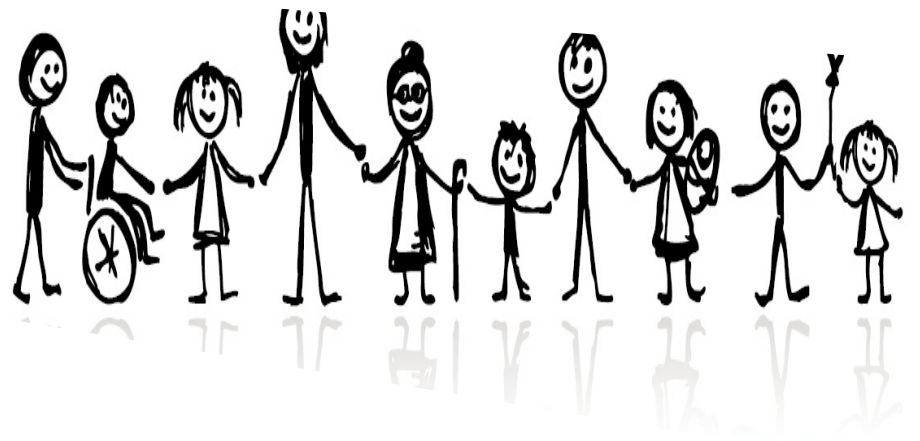
We are really keen on seeing as many faces as possible - please don't be worried about coming along, it really is worthwhile and ultimately, the items discussed are all in order to raise as much money as possible for resources and for the overall benefit of the children at Slade now and in the future.

Wine will be served from 19:00 with the meeting to start at 19:30 where the discussions will include ideas and plans for the upcoming Summer Fête.

Please come along and have your say!



For Families



For When Life is a Worry

Maxine Button, Family Liaison Officer

I know this is a very worrying time with the cost of living rising but I hope the following information will be helpful if you are facing financial challenges at the moment.

- Get in touch with the Citizens Advice Bureau / Job Centre – and get any benefits reviewed to make sure you are getting all you are due.
- People with debt issues can be referred to [Crosslight Advice](#) (based at Tonbridge Baptist Church) They are brilliant at helping people. You can refer yourself for assistance, or this can be done via school, who can do help with the referring process.
- Contact energy providers to enquire about payment plans etc.– it’s worth a go. Some can offer discounts.
- Remember we can refer people for food from our Sustain Foodbank (based at Tonbridge Baptist Church) and of course there is also [F.E.A.S.T \(feast.org.uk\)](#) in town which may be more suitable/convenient for some families – We always say to people please don’t feel embarrassed to use these services if needed.
- “Clothes to Go” (based at Tonbridge Baptist Church) Its a pop up clothing charity shop on Wednesdays 10-12 – everything is super cheap (kids stuff 10p and to everyone, normal charity shops can still be pricey but “Clothes to Go” have some great stock donated.



SUS + AIN
nourishment in time of need



If you need further advice or just want to talk things through please do not hesitate to contact our FLO's, Christina and Maxine via our email address: flo@slade.kent.sch.uk

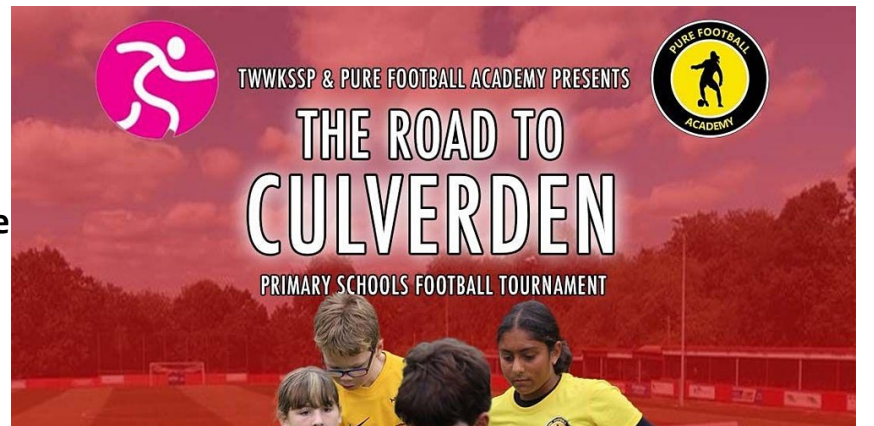
We will include this information on our For Families section on the school website, which we are building as an essential hub which will include links for charities such as those featured here as well as Adult Education courses and events for children during school holidays that won't break the bank or are free to attend. We will keep you updated with everything that goes up on the page so you don't miss anything.

Slade Sport



We're on our Way!

The Road to Culverden will be well trodden in May as our Year 5 and 6 Boys football team joined their female counterparts in qualifying in comprehensive fashion for the finals of the Tunbridge Wells and West Kent Sports Partnership football tournament.



We were represented In two competitions at Hayesbrook School on Wednesday evening as the Year 3/4 and 5/6 boys football qualifiers took place together after being postponed in Term 4.

We are incredibly proud of all of the players in both squads for the improvement made match by match and for their sporting behaviour towards each other and their opponents.



It was the first time our Year 3 and 4 boys had a chance to play for the school in a tournament and despite losing their opening game to a very strong team they kept plugging away and their results improved as the round-robin group stage went on. They didn't make the finals this time, but will sure to be confident for next years tournament if they keep playing together.

Our Year 5 and 6 boys were in the same group as Paddock Wood A, Woodlands School, Long Mead and Hildenborough.

They won all of their matches in convincing style on their way to the Culverden Stadium finals in May.



The team are particularly impressive in the way they use the space of the pitch and help each other by always being available to receive the ball. The goalscorers take the headlines; well done to Jake, Connor and Ted, but special mention also for James for his fantastic defending which gave the team the basis from which to play and beat their opponents, especially the tough task of beating the A team of Paddock Wood, who we owed a victory after they beat Slade in the recent Hockey games!

Slade Stats



Over a school year, we are due to be open for 190 days which equates to 380 sessions with registration in the morning at 08:50 and after lunch in the afternoon.

Attendance is affected if a pupil is not present at school for any whole session including registration.

Attendance Target

97.0%

Attendance This Week

95.2%

Attendance This Year

94.1%

Registers are taken 10 minutes after the school gates close at 08:50.

It is important that the children are at school on time every day to prevent disruption and upset to their day and for the rest of their class.

Punctuality Pup is awarded to the class with the best punctuality each week.

Pupils Late This Week

2

Attendance Matters

Procedure if your child is unwell

If your child is not well and not able to come to school then we ask that parents telephone the school office on 01732 350354 **everyday** of their child's absence. With the current COVID pandemic, please follow government guidelines, but please still let us know if your child will be absent from school. If they are having to self-isolate but are well, then they will need to be taking part in home learning.

Please see below some guidance from the government regarding illness and your child's education.

<https://www.gov.uk/illness-child-education>

Procedure for appointments during school hours

If you have to take your child out of school for **any** reason, including a medical, dental, school visit appointment. Please could you inform the school office **prior** to the appointment along with any supporting evidence of the appointment.

This is so that we can authorise the absence where we can and your child is not marked as unauthorised in our register. Please see below guidance from the government regarding school attendance.

<https://www.gov.uk/school-attendance-absence>

Dear Parents and Carers







Please take the time to read emails sent to you, we try to make sure that everything you are sent relates to your child, so nothing is irrelevant. If you would like further information on any email we send, please contact the class teacher or the school office for assistance.

We also encourage you to follow us on Twitter, we post reminders, useful information, live updates from school and other community events of interest.

Don’t miss out, or let your child miss out, please keep up to date with everything Slade via Arbor and Twitter.

For your convenience, in each newsletter we include this reminder of everything sent out in the current week:

Date of Communication	Subject	Sent To
Tuesday 19 April	Welcome Back / Events This Week	
Tuesday 19 April	National Offer Day: EYFS September Intake	
Tuesday 19 April	Board Games Club Cancellation	BGC Enrolled Pupils 
Tuesday 19 April	End of Day Arrangements	All School 
Wednesday 20 April	Singing Club Cancellation	SC Enrolled Pupils 
Wednesday 20 April	Welcome, Jill Westwood	
Wednesday 20 April	NHS Hearing Screening Date	Selected Parents 
Wednesday 20 April	COVID-19 Update	All School 
Wednesday 20 April	The Road to Culverden	
Wednesday 20 April	Hayesbrook School Football Results	
Friday 21 April	Celebration Assembly Round Up	
Friday 21 April	RSHE: Babies	Year 3 Parents 



Our front cover photo today shows the children having fun in the sun back out on the field at break and lunchtimes.

More next week on what goes on at lunch at Slade as we meet Lunchtime Supervisor and Teaching Assistant, Marian Barlow in the next of our Meet the Team features.



Next Week :

Day	Event
Monday 25 April	
Tuesday 26 April	
Wednesday 27 April	
Thursday 28 March	PTA Meeting - In School (See Page 5)
Friday 29 March	Year 5 and 6 First Aid Training

Forest School Next Week:

MONDAY	Wyvern Class (Year 5, Mr Osborne)
TUESDAY	Dragon Class (Year 5, Miss Meers)
WEDNESDAY	
THURSDAY	Griffin Class (Year 6, Mrs Burnside)
FRIDAY	EYFS Classes Elmer and Gruffalo (Mrs Pearson and Mrs Hitchcock)

Extra Curricular Clubs Next Week :

MONDAY	Y5/6 Netball, First Class Football, Active Sports Gymnastics, Learn Chess, mSPORTi Multi Sports
TUESDAY	YR/1 Book Club (Lunch), Y3/4 Board Games, YR-2 Train Club, Gary Marshall Cricket, Dancemode
WEDNESDAY	Y5/6 Yoga (Before School), Y4-6 Choir(Lunch), Y2/3 Singing, West Kent Athletics
THURSDAY	Y3/4 Cricket (Before School), Y3 Signing Choir (Lunch), Y4-6 Dance, The Art Trolley, First Class Basketball
FRIDAY	Y5/6 Cricket (Before School), SAMA Karate

Further Ahead :

Monday 2 May	National Holiday - School Closed to all pupils
Monday 9 May - Friday 13 May	KS2 Statutory Assessment Tests (SATs) - Year 6
Monday 16 May - Friday 19 May	KS1 Statutory Assessment Tests (SATs) - Year 2
Tuesday 17 May	Matthew Walker Photography - Class Group Photographs
Friday 27 May	Last Day of Term 5
Monday 30 May - Monday 6 June	Summer Terms Break - School Closed to all pupils
Tuesday 7 June	First Day of Term 6
Tuesday 7 June - Friday 10 June	KS1 Statutory Phonics Screening - Year 1 KS2 Statutory Times Tables Screening - Year 4 If you have any questions, please contact your class teacher
Thursday 23 June	Sports Day - More information to follow shortly
Tuesday 28 June (18:00),Wednesday 29 June (09:30)	EYFS22 Parent Information Meetings - Details in Welcome Packs