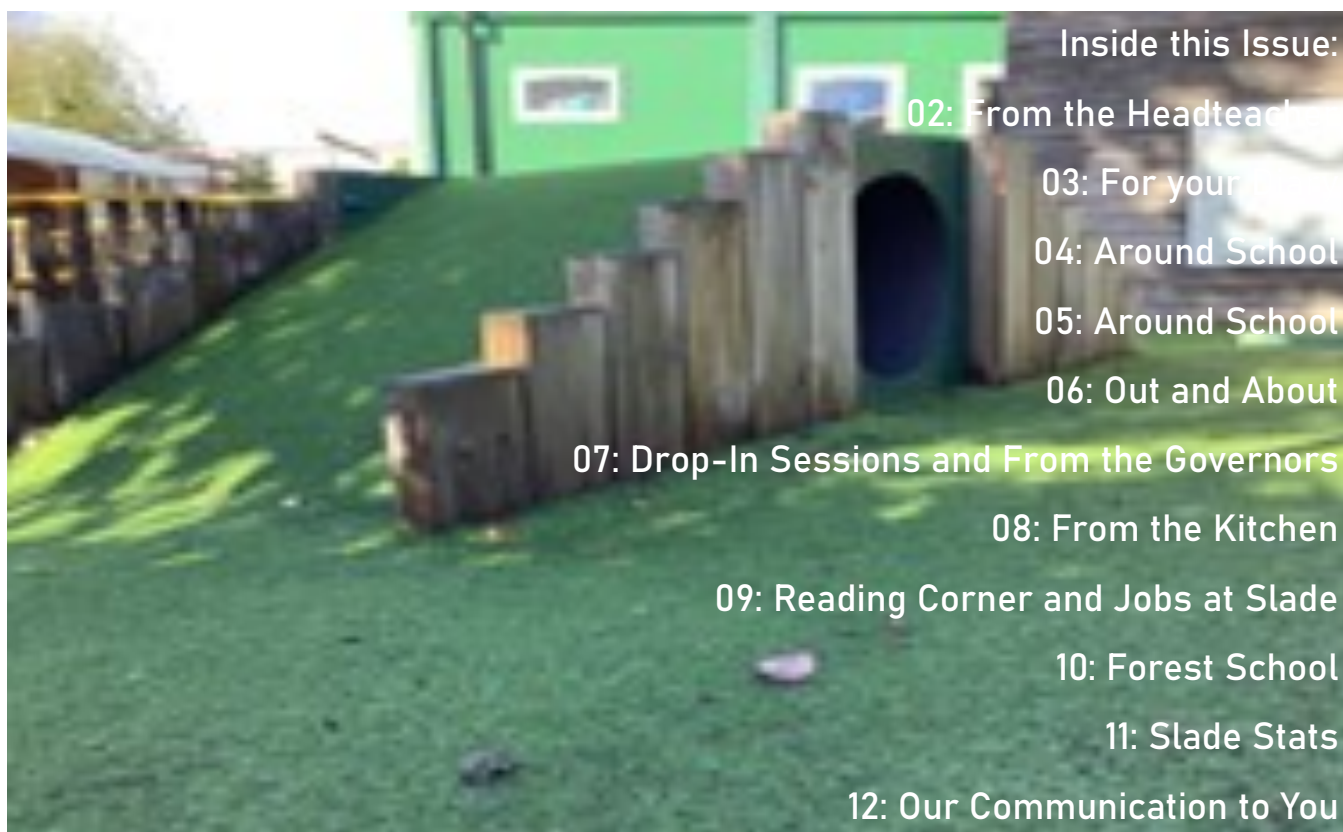




Slade Primary School

School Newsletter: Friday 21 October 2022 / Term 1, Issue 7



Inside this Issue:

02: From the Headteacher

03: For your

04: Around School

05: Around School

06: Out and About

07: Drop-In Sessions and From the Governors

08: From the Kitchen

09: Reading Corner and Jobs at Slade

10: Forest School

11: Slade Stats

12: Our Communication to You

Karen Slade



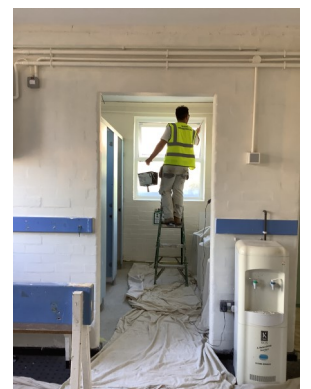
Dear Parents and Carers,

What a busy and productive first term this has been!

And what a very active and physical end of term for all of our children who have participated in their London Marathon running challenge! Well done and congratulations to each and every one of you! Do read on into the newsletter to find out more about the day's events and to see some lovely photos from the running track. Check out the photos from the live event on our Twitter feed too!

It has been so very lovely to see and hear families from across the school browsing the books at our Scholastic Book Fair after school this week. Such a lovely selection of books to choose from! Huge thanks to all those who took the time to stop by to make a purchase! Many thanks too to our Librarian Mrs. Mawson for organizing the event and to the team of staff who have given of their time this week enabling the fair to happen. We are very much looking forward to choosing some books for the library from the commission that your purchases has raised; so a huge thank you from us all.

The roofing project on our Reception classroom is now drawing to a close (pictures to the right and below) with some minor works to the interior currently being finalised. I will be attending a site meeting with KCC and the building contractors early next week during which I am hopeful that the project can be signed off and the building confirmed ready to re-open for the start of Term 2. Fingers crossed! Therefore, I will contact all Reception parents next week to provide an update on the plans; this will include information regarding the changes for you and your child at drop off and pick up times. We are very excited at the prospect of welcoming Elmer and Gruffalo children back into their 'proper' classrooms! A special mention to the Reception Team who have already been working tirelessly this week to restore these classrooms back to their former glory; a huge thank you to you all.



Many thanks to the parents and carers who attended our virtual parent consultation meetings this week. We hope that you enjoyed meeting your child's class teacher and hearing about how your child has settled into their new class. For those that were unable to attend then please contact your child's class teacher at the class email address to arrange a virtual meeting or a telephone call at a mutually convenient time for the start of Term 2. A reminder too of the parent drop-in sessions that are planned for next term, details of which were included in last week's newsletter.

Thank you to those parents who notified the school of the altercation that occurred outside the school gate at drop off time on Wednesday morning outside the school gate. The upsetting incident, involving a member of the public and a traffic warden, has been reported and is now a police matter. Therefore, anyone with any additional information should now report it online at <https://www.kent.police.uk/>

Finally, we are currently recruiting to our school admin team. Details of the role can be found further on in this newsletter or online at <https://www.kent-teach.com/>

I hope that you all have a restful half term break next week and look forward to seeing you back in school at the start of Term 2 on Monday 31 October.

Have a lovely weekend.

Karen Slade.

For Your Diary



Next Week:

| Day | Event |
|--|--|
| Friday 24 October - Friday 28 October | October Break School Closed to all Pupils |
| Tuesday 1 November - Tuesday 15 November | Year Group Drop -Ins Please see Page 7 for further information |
| Monday 31 October | Phoenix Class Swimming First Session: Please make sure you have paid and consented via your Arbor account Wildlife Photograph Exhibition Year 2, 3, 5: Please see email sent on 16 October for full information |
| Tuesday 1 November | Wildlife Photograph Exhibition Year 4: Please see email sent on 16 October for full information |
| Wednesday 2 November | Wildlife Photograph Exhibition Year 6: Please see email sent on 16 October for full information EYFS Phonics Talk: 14:00 Please complete the Form attached to email of 14 October to confirm 0,1 or 2 places required |
| Thursday 3 November | Sphinx Class Swimming First Session: Please make sure you have paid and consented via your Arbor account |
| Friday 4 November | |

Forest School Next Week:

| | |
|-----------|--|
| MONDAY | Gnome Class, Year 2 Mrs Potter |
| TUESDAY | Sprite Class, Year 2, Mr Louth |
| WEDNESDAY | |
| THURSDAY | Pixie Class, Year 1, Miss Elliott and Mrs Knee |
| FRIDAY | Elf Class, Year 1, Mrs Hill |

Extra Curricular Clubs Next Week:

| | |
|-----------|---|
| MONDAY | Y1-4 French , Y1-6 Football, Y1-6 Gym, Y3-6 Creative Writing , KS2 BSL, EYFS/KS1 Multi Skills |
| TUESDAY | Y1 Book Club, Y3-6 Cricket, Y3-6 Dance |
| WEDNESDAY | Y4-6 Yoga, Y4-6 Choir, Y3/4 Basketball, Y2 Singing, Y3-6 Athletics, Y1-6 Art |
| THURSDAY | Y3 Signing, Y1-6 Basketball, Y2 Football, Y1-2 Dance |
| FRIDAY | Y5-6 Sports Club, Karate |

Clubs in Green are Free Clubs with spaces available, Clubs in Red are Free Clubs currently full, Clubs in Black are Paid For; check with organiser for availability

Further Ahead:

| | |
|--|---|
| From Monday 7 November | Year 6 Bikeability Exact dates for each group participating will be emailed next week |
| Wednesday 16 November | EYFS23 Open Morning: FULLY BOOKED |
| Wednesday 23 November | EYFS23 Open Morning Limited Places available: Email admissions@slade.kent.sch.uk to book |
| Friday 16 December - Tuesday 3 January | Christmas and New Year Holiday School Closed to all pupils |
| Wednesday 4 January | First Day of Term 3 |

Around School



In Contact at Slade


Thankyou to all of our parents and carers who this week have taken time to meet with class teachers over Teams in our Term 1 Parent - Teacher Consultations.

Over 95% of parents arranged and attended a meeting, so many thanks for such a great take-up and engagement between school and home; we hope you found the meetings useful - we look forward to organising the summer consultations later in the school year. Consultations are an important part of the calendar at Slade, however we know that there are many reasons to contact us throughout the year - please see below for a full list of the best ways to get help from us when you need it.

General information about school:

 www.slade.kent.sch.uk

General and urgent questions about school or if you wish to clarify anything that has been sent out by us:

 01732 350 354 (Monday to Friday 08:00 - 16:00)



office@slade.kent.sch.uk (anytime)*

 Arbor In-App Messaging (anytime)*




SMS Messaging (anytime)*

To let us know about a child's unplanned absence from school:

 01732 350 354 / Option 1  Arbor In-App Messaging

(This clear message must include the reason for absence and be made before 08:30 on each day of absence)

Class specific questions, non-urgent questions or comment for the class teacher including requests for a meeting:

 Class email addresses (these inboxes are not checked at any point during the school day and should not be used for information about that day or regarding that afternoon's pick up arrangements)

EYFS: elmer@slade.kent.sch.uk gruffalo@slade.kent.sch.uk

Year 1: pixie@slade.kent.sch.uk elf@slade.kent.sch.uk

Year 2: gnome@slade.kent.sch.uk sprite@slade.kent.sch.uk


Year 3: pegasus@slade.kent.sch.uk hippogriff@slade.kent.sch.uk

Year 4: phoenix@slade.kent.sch.uk sphinx@slade.kent.sch.uk

Year 5: wyvern@slade.kent.sch.uk dragon@slade.kent.sch.uk

Year 6: griffin@slade.kent.sch.uk hydra@slade.kent.sch.uk


To contact the Family Liaison Team:

 01732 350 354 / Option 4



flo@slade.kent.sch.uk

To contact the Inclusion Lead, Catherine Barber:

 01732 350 354 / Option 3



cbarber@slade.kent.sch.uk

To make a complaint:  slaws@slade.kent.sch.uk in line with our [Complaints Policy](#).

*If you are contacting the school office via email or messaging and your question or comment requires a reply, you should expect an acknowledgement of this within 48 hours of sending, in line with our [Communications Policy](#).

Around School



School Milk from Cool Milk

We are pleased to still be able to offer all of our children milk throughout their time at Slade. Our milk is provided by Cool Milk, the UK's leading school milk supplier, working in partnership with early years groups, schools, and local authorities who administer the scheme in Kent that is available to all of our pupils. School milk is free for children up to their 5th birthday, and for over-5s it is available at a subsidised* price.

Once children reach the age of 5, they will stop receiving milk until they are registered by the parent via the Cool Milk website.

Each child that registers with Cool Milk will receive a 189ml portion of semi-skimmed milk every day, delivered fresh and chilled to the classroom. Their school milk will not only provide them with essential nutrients, but as it is rehydrating and energy boosting it also bridges the gap between breakfast and lunch to help children stay focused. For more information on how milk can benefit children visit www.coolmilk.com/why-milk-is-great.

How to register if your child is five or older:

Register and pay online at www.coolmilk.com. You can pay for Cool Milk online using your account, over the telephone or at a local PayPoint in Termly or Annual instalments. If you need assistance in registering, please contact our Family Liaison Team via flo@slade.kent.sch.uk

If you have any questions regarding school milk please visit www.coolmilk.com or contact Cool Milk directly on 0800 321 3248.



PTA News



Slade Fireworks: Friday 11 November

Slade Fireworks - tickets on sale from Monday 31 October!



The Slade Fireworks event will be back with a bang on Friday 11 November. Gates open at 5.30pm and the fireworks display will be at 7pm. DJ Matt will be entertaining us on the playground before the display and there will be hotdogs, candy floss, glow sticks, glitter face painting, hot drinks and the fabulous Booze Box.

Tickets are £5 per person; pre-schoolers can attend for free. These will be sold online from Monday 31 October and you'll receive reminders via email from school and the booking information will also be shared on class Whatsapp groups.

We hope you can all join us for the return of this exciting event and if you're able to volunteer, please join the Fireworks Volunteers Whatsapp group at the following link [Fireworks 2022 Volunteers](#) or email sladeppta@yahoo.co.uk

Amazing Success at the KS2 Disco

Everyone involved with the PTA and across the school would like to send a special thankyou to all those who volunteered and supported the KS2 Disco on Friday 7th October, we raised £788! Fantastic effort from all!

Out and About

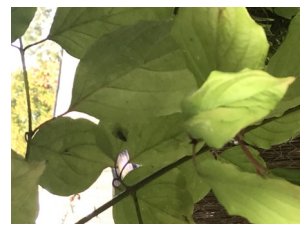
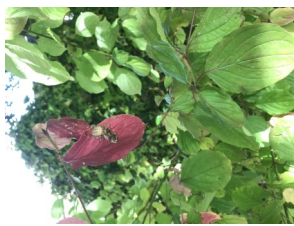


Year 6 Science Day

On Wednesday, the Year 6 classes both had a day of science learning around Slade and in the labs at our good neighbours from Tonbridge School.

Firstly, they used the knowledge they have gained over the term so far to walk about the school field finding living organisms; they went on to classify them including animal, plant or fungi.

They went on to identify different kinds of leaves and used sophisticated adjectives to describe them including the style of veins, edges and texture.



Following this, both Griffin and Hydra Classes walked over to Tonbridge School, where they were treated to a talk and presentation by the science team on a Scanning Electron Microscope which Tonbridge have on loan at present from makers Hitachi and The Natural History Museum. They saw miniscule objects magnified x1000' and the children had to identify what they were; the organisers were incredibly impressed that the Slade contingent were able to identify, first time, headlice, wood, flies and grains of sand from the screen of the microscope. The event has helped to inspire the classes into thinking more about science and how innovations such as the Scanning Electron Microscope can help and improve research and how we live and look after our planet.



The TCS Mini London Marathon

The Key Stage 1 and Key Stage 2 children have been and continue to take part in the TCS Mini London Marathon today ; the challenge is for children to run, jog, walk or wheel 2.6 miles in or near their school around the time of the TCS London Marathon which took place at the beginning of the month.

The yeargroups have been taking it in turn to use the running track at Tonbridge School to complete their challenge, organised here by Wendy Ball, Fitness and Wellbeing Champion. Many congratulations to all of the children for completing the challenge and to all of the parents who have helped this event happen by accompanying the groups.



For more information about the TCS Mini Marathon visit: <https://www.tcslondonmarathon.com/the-event/tcs-mini-london-marathon-in-schools>

Coming Up..



Parent Drop In Sessions: November 2022

As shared in last week's newsletter within Mrs Slade's column, we are all delighted to be welcoming parents to our Drop-In Sessions between 14:30 and 15:00 - the sessions are designed to give parents a chance to see the children's books and the classroom as we haven't been in a position to invite you in for the consultation evenings this week. We look forward to seeing you if you are able to make it

Entry and exit arrangements to and from the school site and into classrooms will be shared separately for each year group prior to the visit date.

*Due to Sphinx Class swimming lessons happening on Thursday 3 November, Miss Lipman's drop in session will take place between 15:20 and 15:50.

| Date | Yeargroup |
|----------------------|-----------|
| Tuesday 1 November | 6 |
| Wednesday 2 November | 5 |
| Thursday 3 November | 4* |
| Tuesday 8 November | 3 |
| Wednesday 9 November | 2 |
| Thursday 10 November | 1 |
| Tuesday 15 November | Reception |

From The Governors



Simon Griffiths, Chair of Governors

It has been a pleasure to see the children settle back into the school routine so quickly, despite some additional challenges particularly for our new intake. Thank you to all the parents and carers who have been so understanding over the past few weeks as the essential building works have taken place.

The governors recently held their first Full Governing Body meeting of the year. This is a largely procedural meeting where we agree how to organise ourselves as a governing body, allocate monitoring responsibilities, appoint committee chairs and adopt key policies.

It is best practice for the chair of governors to stand for re-election at the start of each school year and I am pleased the governors were willing to reappoint me for a further 12 month term of office. We also elected David Evans as our vice-chair of governors, also to a 12-month term. Our committee chairs remain unchanged with Stuart Concannon as Chair of our Personnel and Professional Development committee, David Evans as chair of Finance and Property and Scott Miller as chair of our Curriculum committee.

Two of our parent governors, Sahar Zaidi-Shirazee and Scott Miller are approaching the end of their 4-year terms as elected Parent Governors. I am pleased to report that both are willing to continue to support the school as governors and have been re-elected to further 4-year terms as Co-Opted governors, these are governors appointed directly by the governing body. This has resulted in two parent governor vacancies which will be advertised in Term 2, so please look out for details of what is involved and how you can stand for election to the vacant posts.

A big thank you to all of you who completed the annual Parent and Carer survey. We have received the largest response to this in recent years and I look forward to sharing the results with you via the newsletter next term.

I hope you all enjoy the half term break after such a busy start to the school year.

Simon

From The Kitchen



Nourish Contract Catering have produced their Winter and Spring menu which will take effect from Monday 31 October. Prices remain at £2.40 for all KS2 children, payable via your Arbor account. Meals are free to all EYFS and KS1 children under Universal Free School Meals and to all eligible children throughout EYFS, KS1 and KS2 through Free School Meals Pupil Premium scheme.

WEEKLY MENU

OCT 2022 TO MAR 2023

| | MONDAY | TUESDAY | WEDNESDAY | THURSDAY | FRIDAY |
|---------------|--|---|---|--|---|
| WEEK 1 | Spaghetti Vegetable Bolognese 1.1g Shepherdess Pie 1.1g Jacket Potato with a Choice of Toppings 1.8g Sweetcorn Peppers Rice Pudding 7 Mr Nourish Biscuit 1 Fruit Pots | Chicken Curry Herby Tomato Pasta Twists 1.1g Jacket Potato with a Choice of Toppings 1.8g Rice Seasonal Vegetables Apple Crumble 1 & Custard 7 Mr Nourish Biscuit 1 Fruit Pots | Minced Beef & Yorkshire Pudding 1.2g Boston Bean Stuffed Potato Skins 1.1g Jacket Potato with a Choice of Toppings 1.8g Mashed Potatoes, Broccoli Diced Swede, Carrot Mandarin Drizzle Cake 1.5 Mr Nourish Biscuit 1 Fruit Pots, Yoghurt 7 | Meatball Wrap 1 Cheese Penne 1.7g Jacket Potato with a Choice of Toppings 1.8g Baked Wedges Sliced Carrots Green Beans Chocolate Swirls 1.7 Fruit Pots Yoghurt 7 | Fish Cakes - Cod or Salmon 1.2g No Meat Burger in a Bun 1.4, 5.1g Jacket Potato with a Choice of Toppings 1.8g Chips, Baked Beans Peas, Cucumber Sticks Ginger Biscuit 1.2g Fruit Pots Yoghurt 7 |
| WEEK 2 | Macaroni Cheese 1.7g Rice & Bean Burrito 1.1g Jacket Potato with a Choice of Toppings 1.8g Baked Wedges Seasonal Vegetables Ice Cream 7 Mr Nourish Biscuit 1 Fruit Pots | Sticky Chicken Stir Fry Noodles 1.1, 2.2g Vegan Sausage Roll 1.1g Jacket Potato with a Choice of Toppings 1.8g Mashed Potato, Carrots Green Beans Chocolate Orange Pot 7 Mr Nourish Biscuit 1 Fruit Pots | Roast Pork & Gravy No Meat Mince Puff 1.5, 1.9g Jacket Potato with a Choice of Toppings 1.8g Rustic Roast Potatoes Cabbage, Sweetcorn Fruit Jelly Mr Nourish Biscuit 1 Fruit Pots, Yoghurt 7 | Mild Mexican Chilli 4 Cheese & Spring Onion Pasta Bows 1.7g Jacket Potato with a Choice of Toppings 1.8g Rice, Cauliflower Carrots Strawberry Shortbread 1 Fruit Pots Yoghurt 7 | Fish Fingers 1.8 Margherita Pizza 1.5, 1.9, 7 Jacket Potato with a Choice of Toppings 1.8g Chips, Baked Beans Peas, Coleslaw 9 Crispy Batty Bar 1.4, 2.5, 2.6 Fruit Pots, Yoghurt 7 |
| WEEK 3 | Quorn Sausage & Bean Burrito 1.1g Cauliflower & Chick Pea Curry & Rice 1g Jacket Potato with a Choice of Toppings 1.8g Baked Wedges Seasonal Vegetables Milkshake 7 Mr Nourish Biscuit 1 Fruit Pots | Beef Stew & Dumpling 1 Tomato & Herb Shells 1.1g Jacket Potato with a Choice of Toppings 1.8g Cauliflower Peas Jam Sponge 1.5 & Custard 7 Mr Nourish Biscuit 1 Fruit Pots | Roast Gammon & Gravy Cheese & Onion Slice 1.7g Jacket Potato with a Choice of Toppings 1.8g Rustic Roast Potatoes Diced Carrots, Cabbage Crispy Cake 1.2g Mr Nourish Biscuit 1 Fruit Pots, Yoghurt 7 | Chicken Pie 1 Cheesy Pasta 1.7g Jacket Potato with a Choice of Toppings 1.8g New Potatoes, Sweetcorn Broccoli Fruit Jelly Mr Nourish Biscuit 1 Fruit Pots, Yoghurt 7 | Sausages 1.6 Vegan Hot Dog 1.5, 1.9g Jacket Potato with a Choice of Toppings 1.8g Chips, Baked Beans Peas, Carrot Sticks Toffee Apple Flapjack 1.2g Fruit Pots Yoghurt 7 |
| WEEK 4 | Margherita Pizza 1.5, 2.9, 9 Vegetable Paella 1g Jacket Potato with a Choice of Toppings 1.8g New Potatoes, Sweetcorn Peppers Strawberry Whip 7 Mr Nourish Biscuit 1 Fruit Pots | Cottage Pie Tomato Bows 1.1g Jacket Potato with a Choice of Toppings 1.8g Cauliflower Peas Banana Loaf 1.5 & Chocolate Custard 7 Mr Nourish Biscuit 1 Fruit Pots | Roast Chicken & Gravy Meat Free Meatball Pasta 1.1, 1.9g Jacket Potato with a Choice of Toppings 1.8g Rustic Roast Potatoes Broccoli, Sliced Carrots Fruit Jelly Mr Nourish Biscuit 1 Fruit Pots, Yoghurt 7 | Bolognese Shells 1 Cheesy Cajun Wedges 4, 2.1g Jacket Potato with a Choice of Toppings 1.8g Seasonal Vegetables Jam Puff 1.4 Fruit Pots Yoghurt 7 | Chicken Bites 1.7 Bruschetta 1.7g Jacket Potato with a Choice of Toppings 1.8g Chips, Baked Beans Peas Coleslaw 9 Chocolate Cookie 1.2g Fruit Pots Yoghurt 7 |

REMEMBER... RECEPTION, YEAR 1 AND 2 ARE ENTITLED TO FREE SCHOOL MEALS. THIS EXCLUDES INDEPENDENT SCHOOLS.

Dishes marked with any of the following numbers contain the matching allergen:
 1 Wheat/Gluten 2 Crustaceans 3 Soybean 4 Nuts 5 Sesame
 6 Sulphites/Sulphur Dioxide 7 Milk 8 Fish 9 Egg 10 Peanuts 11 Molluscs
 12 Celery/Celery 13 Nuts 14 Lupins 15 Don't Know 16 Bayley/Quail

Key: Vg Vegan Available Daily: Selection of Salads 9. Homemade Bread 1, 3, 7, 9.
 V Vegetarian Some of our schools may use pre-prepped potatoes or vegetables on occasions. These may contain sulphites and celery. Please discuss with your manager.

Reading Corner



Scholastic Book Fair

Caroline Mawson, School Librarian

Thankyou to everyone who has visited the Scholastic Book Fair this week, it has been a fantastic success, with books flying off of the shelves and plenty more ordered for future delivery. In total £1794.00 was taken across the week.

The children have also enjoyed visiting the fair during their library sessions in the normal school day.



Working at Slade



Administrative Assistant with Finance Focus

Jill Westwood, School Business Manager

We are expanding our administration team with a new position being advertised for the first time today.

We are looking for an passionate, enthusiastic & organised person to be our new Administrative Assistant (with finance focus), to provide support to the School Business Manager & SLT in financial and administrative functions.

The new Administrator will be part of the support team in the main office 5 days a week in the afternoons.



Full details, including the hours of work and salary will appear on the Kent Teach website later today, just search for Slade Primary School in the Find Jobs bar.

For more information and to apply for jobs in schools across Kent via [kent-teach.com](https://www.kent-teach.com/):

<https://www.kent-teach.com/>

Forest School



Term 2 Timetable

Monday 31 October - Gnome Class (Year 2, Mrs Potter)

Tuesday 1 November - Sprite Class (Year 2, Mr Louth)

Thursday 3 November - Pixie Class (Year 1, Mrs Knee and Miss Elliott)

Friday 4 November - Elf Class (Year 1, Mrs Hill)

Monday 7 November - Elmer Class (EYFS, Mrs Pearson)

Tuesday 8 November - Gruffalo Class (EYFS, Mrs Hitchcock)

Thursday 10 November - Pegasus Class (Year 3, Mrs Stephens and Mrs Berrill)

Friday 11 November - Hippogriff Class (Year 3, Miss Taylor)

Monday 14 November - Sphinx Class (Year 4, Miss Lipman)

Tuesday 15 November - Phoenix Class (Year 4, Mr Duffin)

Thursday 17 November - Wyvern Class (Year 5, Mr Osborne)

Friday 18 November - Dragon Class (Year 5, Miss Meers)

Monday 21 November - Griffin Class (Year 6, Mrs Burnside)

Tuesday 22 November - Hydra Class (Year 6, Miss Buswell)

Thursday 24 November - Wyvern Class (Year 5, Mr Osborne)

Friday 25 November - Dragon Class (Year 5, Miss Meers)

Monday 28 November - Griffin Class (Year 6, Mrs Burnside)

Tuesday 29 November - Hydra Class (Year 6, Miss Buswell)

Friday 2 December - Elmer Class (EYFS, Mrs Pearson)

Monday 5 December - Gruffalo Class (EYFS, Mrs Hitchcock)

Tuesday 6 December - Elf Class (Year 1, Mrs Hill)

Wednesday 7 December - Pixie Class (Year 1, Mrs Knee and Miss Elliott)

Monday 12 December - Gnome Class (Year 2, Mrs Potter)

Tuesday 13 December - Sprite Class (Year 2, Mr Louth)

Wednesday 14 December - Pegasus Class (Year 3, Mrs Stephens and Mrs Berrill)

Thursday 15 December - Hippogriff Class (Year 3, Miss Taylor)



In addition to these dates, the Year 5 Classes have Forest School related Cooking Days, more details nearer the time:

Thursday 1 December - Wyvern Class (Year 5, Mr Osborne)

Thursday 8 December - Dragon Class (Year 5, Miss Meers)

Slade Stats



Attendance

Over a school year, we are due to be open for 190 days which equates to 380 sessions with registration in the morning at 08:50 and after lunch in the afternoon.

Attendance is affected if a pupil is not present at school for any whole session including registration.

The class with the best attendance each week will win Attendance Ted.

Attendance Target

97%

Attendance This Week

94.0%

Attendance This Year

96.2%

Punctuality

Registers are taken 10 minutes after the school gates close at 08:50.

It is important that the children are at school on time every day to prevent disruption and upset to their day and for the rest of their class.

Punctuality Pup is awarded to the class with the best punctuality each week.

Pupils Late This Week

23

Attendance Ted and Punctuality Pup winners are announced each Friday live from the normal celebration assembly via our Twitter feed which also includes the weekly winners of our Pupil of the Week prizes from the EYFS and KS1 Golden Book and KS2 Diamond Book as well as the champion house from the weekly totting up of Housepoints from across KS1 and KS2.

Follow us to find out more [@sladeprimarysch](https://twitter.com/sladeprimarysch).



