

SLADE PRIMARY SCHOOL



Inside this Issue:

- 02: From the Headteacher
- 03: For your Diary
- 04: Around School
- 05: Nourish News
- 06: Around School
- 07: Wellbeing and Languages
- 08: PTA News
- 09: Our Communication to You
- 10: Slade Stats
- 11: Slade on X
- 12: Slade+

School Newsletter Term 1 Issue 4

Friday 29 September 2023

KAREN SLADE

FROM THE HEADTEACHER

Dear Parents and Carers,

A huge thank you to all those parents and staff who supported our Macmillan coffee morning today by providing and eating cake whilst donating so very generously too! Thank you also to those parents who gave of their time serving teas and coffees; it was lovely to see you all there and supporting this very worthy cause! In addition, we thoroughly enjoyed being entertained by the Slade School Choir as we ate and drank as they gave their first public performance this academic year. You all sounded fabulous! Do look out for our second cake sale of the day, after school on the playground at pick up time, with all proceeds once again going towards the Macmillan Cancer Support charity.

Earlier today, we said good bye and good luck to Amy Riseborough, 1:1 Teaching Assistant (right), who is leaving us temporarily to start her maternity leave! Amy joins Sarah Meers, Class Teacher and Phase Leader, who also began her maternity leave, a week earlier than planned, last Friday. I'm sure that you all join with me in sending our good wishes to Amy, Sarah and their families at this very exciting time as they await their new arrivals later in October. Watch this space for pending baby news and updates!

Many thanks once again to our Class Reps who came into school on Thursday afternoon for our first meeting of this academic year. It was lovely as always to catch up with you all whilst hearing your thoughts and feedback on this term's 'hot topic' of School Trips. It was good to hear your ideas and suggestions along with other feedback from your classes' parents too. Thank you everyone.

Planning ahead, the parents of children in Elmer and Gruffalo Classes are invited to join us in school on either Wednesday 18th October or Thursday 19th October when we will be holding the Reception 'Meet the Team' Meetings. In addition to meeting the Reception Team of adults, this is also an opportunity for you to find out more about the learning we have planned for your children in the early years and to suggest ideas and activities for you to support your children with their early education at home too. There will also be an opportunity for you to pop into your child's classroom to say hello to them in their lovely learning environment! We look forward to welcoming many of you into school on this date!

A reminder for all parents that if you have any concerns or queries about your child in school then please do arrange a time to discuss these with your child's class teacher. This can be done by catching the teacher at the end of the day, once all of the class has been dismissed, by telephoning the school office to arrange an appointment at a mutually convenient time or by emailing the class email address. Don't forget that Parent Consultation meetings are also being held the week beginning 16th October with the booking system now open. Well done and thank you to those parents who have already booked their slot!

Finally, the collection of lost property items in school has grown very quickly in the first four weeks of term! We do endeavor to return all items to their rightful owners wherever possible so please do help us by ensuring that all items of your child's clothing and their belongings are clearly and permanently named. At the end of today all lost property items will be out on the playground to enable you to look with your child for any missing items, following which any unnamed and unclaimed items will make their way to the PTA uniform store for re-sale. So please do take a look and take what you can!

Have a lovely weekend,

Karen Slade



DIARY DATES

NEXT WEEK AT SLADE

Next Week:

Day	Event
Monday 2 October	
Tuesday 3 October	National Child Measurement Programme - EYFS and Year 6
Wednesday 4 October	
Thursday 5 October	09:30 - Harvest Festival - See Page 6 Mr Nourish Birthday Dinner and Card Competition - See Page 5
Friday 6 October	

Forest School and Swimming Next Week:

MONDAY	
TUESDAY	Sphinx Class Forest School Hydra Class Swimming
WEDNESDAY	Hydra Class Forest School
THURSDAY	Wyvern Class Swimming
FRIDAY	Wyvern Class Forest School

Further Ahead:

Tuesday 10 October -
Thursday 19 October

YEAR 6 BIKEABILITY

Thankyou to everyone who has signed up. The payment screen is now open on Arbor

Monday 16 October

TITANS HEARING IMPAIRED
TODDLER GROUP

Open to all parents, carers and children who have a hearing impairment

Tuesday 17 October &
Thursday 19 October

TERM 1 PARENT-TEACHER
CONSULTATIONS

Booking now open via your Arbor account

SLADE JOURNAL

AROUND SCHOOL

Welcome to Slade, Maya

On Monday, we welcomed Maya to Slade.

Maya has joined her new friends in Hydra Class with Mr Duffin and has settled in to life here extremely quickly. We hope you have had a wonderful week, Maya.

Our warm welcome is extended to all of Maya's family, with who we look forward to a long, happy and successful relationship.



School Photographs

It was great being able to spend the day with Matthew Walker from Portrait Days Photography who returned to Slade with his colleague Chris Hill on Wednesday to take the individual and family photographs of the children across the school.

Every child who was present at school on Wednesday will have brought home an order information card. The card will include a QR Code to scan for instant access to the Portrait Days website to view the picture. Alternatively, you can use your web browser to visit www.portraitdays.net before inputting the unique two part 11 figure code given on the card.

If you wish to purchase any photographs, you must do so via the same links - we are unable to take orders via the school.

Matthew offers free delivery to school on all orders made on or before Sunday 15 October.

We look forward to seeing Matthew again in the summer when he will take the annual class and group photographs and thank him and Chris for coming in this week.



Parent - Teacher Consultations

We are very grateful for the amazing response to the booking window opening to secure a time to spend with your child's class teacher at our Autumn Parent - Teacher Consultations to be held on Tuesday 17 October and Thursday 19 October between 16:00 and 19:00.

As we send this newsletter to you a total of 326 appointments have been made, which is just short of 80% of all of our children.

We look forward to seeing you all at the meetings.

If you are one of the few left to book, please don't miss out on the chance to find out how your child has settled into their new yeargroup and class, both socially and academically - the remaining appointment times are bookable via your Arbor portal or app. Just logon, choose Parent Consultations and choose a time from the drop down list.



Lost Property

We are only in week 3 of the new term, but have already amassed a large amount of lost property including plenty of unnamed items of school clothing.

The clothing will be out on the playground after school today alongside the PTA Cake Sale and we hope you are able to reclaim anything that belongs to you.

In addition to the clothing, we have the items pictured (left) in the school office. If any of these items belong to your child, please drop in next week or email us for safe return.



SLADE JOURNAL

NOURISH NEWS

Mr Nourish's Birthday: Thursday 5 October

Don't forget, Helena and her team in the kitchen will be serving a special meal day on Thursday in honour of Mr Nourish's birthday.

Helena would like to thank everyone who has already submitted an entry for her competition - she is amazed by the lovely birthday cards that the children have designed for the Nourish mascot and will hand out the KS1 and KS2 prizes to the lucky winners in next week's Celebration Assembly.

Mr Nourish's birthday is also School Census Day where the government survey the number of children taking a school dinner, with national budgets planned around the results so we encourage as many children to sample the Birthday menu as possible.

For more about the school census visit gov.uk: [What You Need to Know](https://www.gov.uk/what-you-need-to-know)



Mr Nourish's Birthday
Thursday 5th October 2023

Burger in a Bun ^{1,5}	Salad Bar
Vegetable Nuggets ^{1,6,9}	Herby Diced Potato
Jacket Potato with a Choice of Toppings ^{7,8,9}	Birthday Cake ^{1,9}
Sweetcorn	Jelly Pots
	Fruit Pots

Competition

DESIGN A BIRTHDAY CARD FOR MR NOURISH
HAND IN TO THE CATERING TEAM
PRIZES TO BE AWARDED ON HIS BIRTHDAY

Dishes marked with any of the following numbers contain the matching allergen: Allergen code: (1) Wheat/Gluten (2) Crustaceans (3) Soybean (4) Mustard (5) Sesame (6) Sulphites/Sulphur Dioxide (7) Milk (8) Fish (9) Egg (10) Peanuts (11) Molluscs (12) Celery/Celery (13) Nuts (14) Lupine (15) Oat/Gluten (16) Barley/Gluten (17) Chickpea

Lunch Orders

School meals are free to the following groups:

- All children eligible for benefits related Free School Meals and Pupil Premium funding
[Could you be eligible?](#) Click the link to find out.
- All children in EYFS classes
- All children in KS1 classes

All other children in KS2 are charged £2.45 per meal which is payable via your Arbor account. Please make sure the Meals section of your account is loaded with funds before a meal is taken.



SLADE JOURNAL

AROUND SCHOOL

Harvest Festival: Thursday 5 October

We are all looking forward to our annual Harvest Festival, which will be celebrated next Thursday (5 October) at 09:30 at the church of St Peter and St Paul.

The celebration this year is open to parents and carers to attend. However, please be aware that space in the church is very limited with no guarantee of seating being available for visitors. There will be standing room available at the back of the church but would ask that all pushchairs are left outside.

As in previous years we will be collecting donations of produce for the Harvest Festival. This produce is distributed to senior citizens and residents of Castle Fields and Riverside Court in Tonbridge. We will also once again be making a contribution to Nourish Community Foodbank (right), a local charity providing practical support to families in Tonbridge during times of need. Our Harvest Festival is an opportunity for the children to consider the needs of others and for us, as a school, to show this thoughtfulness to members of our local community.

For information on the wonderful work of the Nourish Community Foodbank visit: <https://www.nourishcommunityfoodbank.org.uk/>

If you are able to do so, please feel free to donate an item to our collections. These could include tinned goods, pre-packaged biscuits, cakes, crackers, rice and pasta. Donations of harvest produce can be brought into school from Monday 2 October ready to be distributed into bags and then delivered to the residents and the foodbank.

There will be collection boxes at each of the school entrances for your donations on those mornings that week.



Class Rep Meeting

Miss Garrett hosted the first Parent Rep meeting of the year yesterday afternoon with the hot topic being School Visits and Trips.

It was a treat to meet the new Parent Reps who met alongside those who are carrying on the vital role for their classes this year. A special welcome to Emma and Kira-Lee representing the EYFS Classes, Lisa who has taken on the job for Elf Class and Rob who is the new Rep for Pegasus Class.

The meeting flowed with conversation about the topic of school trips, with feedback from the parent groups discussed in order to help facilitate a fair, transparent and cost effective set of yeargroup trips throughout the school year. Thankyou to everyone who shared their thoughts with their class rep recently.

The Class Reps help to be a point of contact for new parents and to form a central forum so everyone can keep up-to-date with events and activities and pass on views and comment on the hot topic of each term, helping to have a positive impact on all pupils at our school.

Your Parent Reps:

Elmer - Kira Lee

Sprite - Danielle

Wyvern - Hannah

Gruffalo - Emma

Pegasus - Rob

Hydra - Amy

Elf - Lisa

Hippogriff - Emily

Dragon - Joanne

Pixie - Charlotte

Phoenix - Jennifer

Griffin - Maria

Gnome - Helen

Sphinx - Lisa



SLADE JOURNAL

SPORT, FITNESS AND WELLBEING

Year 3 and 4 Girls Football

This week, we have been contacted by Ashley Rodi, the Secretary of the Tonbridge and Malling Schools Football Association. Ashley has some super news for girls in Year 3 and 4 who are interested in playing football.

Ashley told us:

'We are excited to inform all primary schools that we will be continuing our Year 3/4 Girls development training sessions this season.'

These sessions are open to girls in year 3 and 4 of all abilities as these sessions are aimed to introduce girls to football in a safe, fun and learning environment. We have an amazing team of Qualified Football Coaches and Qualified PE Teachers who will deliver the sessions each week. We have organised 3 open training sessions for girls to attend.'

If your daughter is interested in taking part in these sessions, please complete the form here: <https://form.jotform.com/232636882289369>.

If you want further information, please contact info@tonbridgeandmallingsfa.co.uk.

The sessions are at Mascalls Academy, Paddock Wood, TN12 6LT

Monday 2, 9 and 16 October 2023 between 18:00 and 19:00

Training will take place on the Mascalls Academy 3G surface



MASCALLS ACADEMY

Academic Excellence
Character | Culture



SLADE JOURNAL

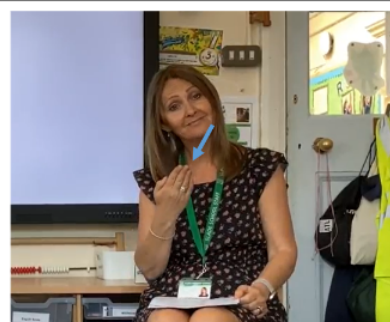
LANGUAGE LEARNING

European Day of Languages
26 September



S'il te plaît

Please



Apprendre le français à Slade

We always love celebrating the different cultures, backgrounds and languages spoken of all of our children at Slade.

We are incredibly lucky to be learning in a diverse environment with pupils and adults able to share their experiences and knowledge to the benefit of all.

Across Slade we currently have about a third of all pupils who speak or are exposed to a language other than English at home - speaking between them 45 different world languages. Added to English and British Sign Language this means we have the ability to hear and see 47 different ways of saying hello, goodbye, please, thank you and everything else!

In school, we learn the basics and first steps of French as part of the curriculum and each week the children learn and use a different word - building their vocabulary and usage of the language of our nearest neighbours in France. We will feature the English, French and BSL Words of the Week each week in the newsletter, starting today in the week of European Day of Languages which was celebrated by the Council of Europe on Tuesday.

Aujourd'hui, le mot est S'il vous plaît

SLADE JOURNAL

PTA NEWS

Macmillan Coffee Morning

Thankyou for joining us this morning at the annual Coffee Morning in aid of Macmillan Cancer Support, it was fantastic to see so many parents and friends of the Slade family come together for some informal chat, a catch up over coffee and importantly, to raise vital funds for the work of Macmillan.

A massive thankyou also to everyone who donated cake and cookies this week; without these, the event just would not happen! Thanks also to the choir, who under the guidance of Mrs Luffingham entertained the crowd through the morning too.

If you are able to donate financially to Macmillan Cancer Support please do so via:

<https://coffeefundraising.macmillan.org.uk/fundraising/cm23017887>

For more on the work and support they provide, visit: <https://www.macmillan.org.uk/>

The Coffee Morning this year has been organised by former FLO Maxine Button, and taken on in recent weeks including the hosting and serving by the PTA Committee - congratulations to them for a wonderful event.

Cake is not just for the morning though; we have a special sale this afternoon in the school playground at collection time alongside our lost property stalls with all proceeds going to the Macmillan fund.



Christmas Artwork

Michelle Hogg

Next week your children will be coming home with their fabulous Christmas artwork templates. These templates can be applied to many items that will make wonderful keepsakes and/or Christmas presents for friends and family. Suggestions include Christmas cards, key rings, mugs, jigsaw, wrapping paper, cushion covers, coasters, table mats, tea towels... the list is (almost) endless!

Full instructions and further information will be included with your child's beautiful artwork on how you can order. All orders must be placed online. Please note the school cannot accept any orders or payment and the deadline for orders is **Wednesday 18 October**.

A percentage of the sales will go towards the PTA fund which goes back to supporting the children and wonderful staff at Slade.

For any queries please email sladexmasgifts@yahoo.com



Term 1 Used Uniform Sale Success

We are so happy to report that last week's used uniform sale held in the playground after school on Friday raised a record £200+ for PTA funds.

This is a wonderful amount to raise in just 40 minutes and we are grateful to everyone who now buys the quality used items we have on offer at these sales.

Look out for the email and social media posts advertising the next sale, coming soon!



DEAR PARENTS AND CARERS

ARBOR EMAILS SENT THIS WEEK

Please take the time to read emails sent to you, we try to make sure that everything you are sent relates to your child, so nothing is irrelevant. If you would like further information on any email we send, please contact the class teacher or the school office for assistance.

Date of Communication	Subject	Sent To
Monday 25 September	Gnome Class Forest School Highlights	Gnome Class Parents
Monday 25 September	Elf Class Forest School Highlights	Elf Class Parents
Monday 25 September	Pixie Class Forest School Highlights	Pixie Class Parents
Monday 25 September	Autumn Parent - Teacher Consultations	All School
Monday 25 September	Reception Baseline Assessment	EYFS Parents
Tuesday 26 September	Secondary School Open Days and Application Information	Year 6 Parents
Tuesday 26 September	EYFS Meet the Team and Phonics Event	EYFS Parents
Tuesday 26 September	Sprite Class Forest School Highlights	Sprite Class Parents
Wednesday 27 September	Young Voices Information	Participants' Parents
Wednesday 27 September	Macmillan Donations	All School
Wednesday 27 September	Pegasus Class Forest School Highlights	Pegasus Class Parents

HERE TO HELP

HOW TO CONTACT US

We are always keen to hear from you if you have a positive, negative comment to make about anything going on at school, or if you have a question or need clarification on anything we have sent or said.

We have a number of ways for you to reach out to us; please see the guide below to see where you should direct your question or comments in the first instance in order to make sure we are able to answer you as quickly as possible.

My child's class learning , class activities, lessons, homework	Your child's class email address:
Wellbeing or pastoral support	<i>classname@slade.kent.sch.uk</i>
Concerns about bullying and behaviour	
Absence and Sickness, School Trips, Payments, School Events	
Special Educational Needs (SEND)	office@slade.kent.sch.uk
Admissions	admissions@slade.kent.sch.uk
Yeti's Wraparound	General queries: and Childcare Voucher payments: yetis@slade.kent.sch.uk Late Collections: 01732 377760
School Lunches, Nourish Contract Catering	teresa@nourishcontractcatering.co.uk
Slade PTA	sladeppta@yahoo.co.uk
The Governing Body and Chair of Governors	governors@slade.kent.sch.uk
Complaints	slaws@slade.kent.sch.uk
GDPR Information and Reporting	eugdpr@slade.kent.sch.uk or slaws@slade.kent.sch.uk

SLADE STATS

ATTENDANCE

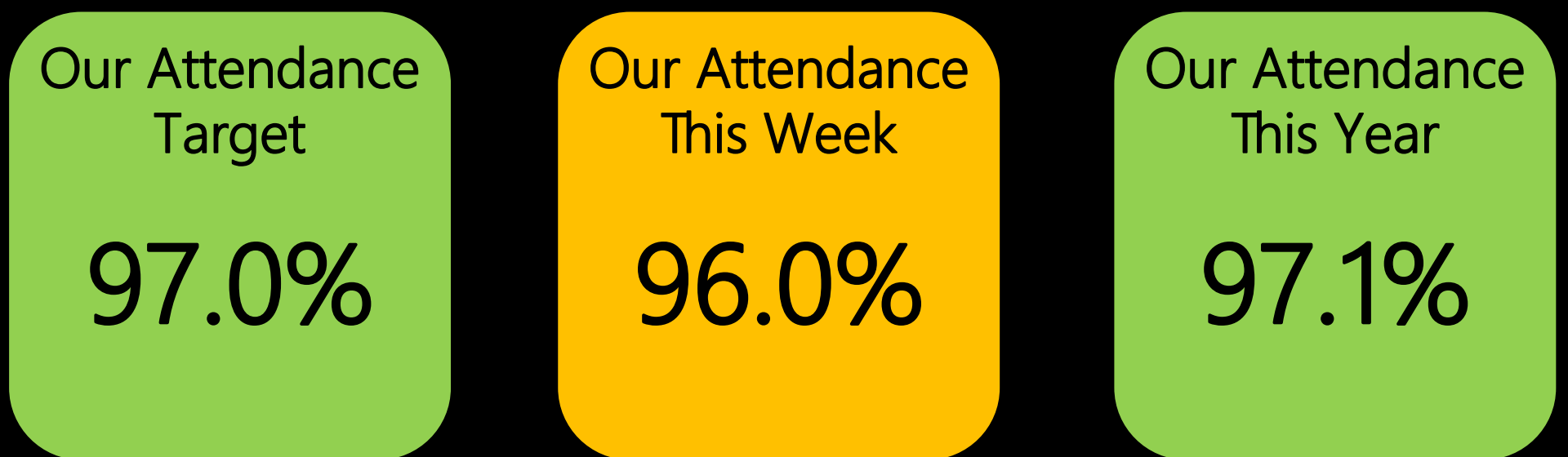
Over a school year, we are due to be open for 190 days which equates to 380 sessions.

Registration takes place at 08:50 in the morning and after lunch in the afternoon.

Attendance is affected if a pupil is not present at school for any whole session including registration.

The class with the best attendance each week will win Attendance Ted.

Winners are announced via our X (formerly Twitter) feed @sladeprimarysch



Attendance percentage this year to date by yeargroup:

EYFS	98.3%	Year 2	99.0%	Year 5	93.4%
Year 1	95.1%	Year 3	93.4%	Year 6	95.6%
		Year 4	96.2%		

SLADE STATS

PUNCTUALITY

Registers are taken 10 minutes after the school gates close at 08:50.

It is important that the children are at school on time every day to prevent disruption and upset to their day and for the rest of their class.

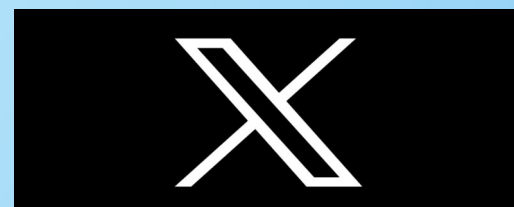
Punctuality Pup is awarded to the class with the best punctuality each week.

Winners are announced via our X (formerly Twitter) feed @sladeprimarysch



SLADE ON X

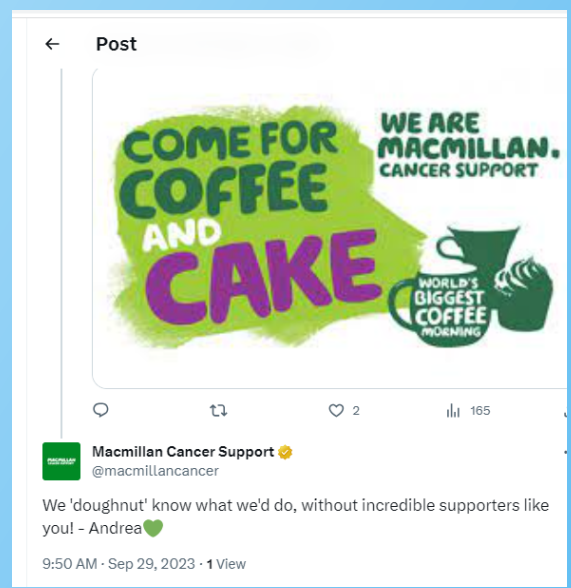
X-POSTS (Formerly Twitter)



We encourage you to follow us on the social media platform X, formerly known as Twitter.

We post a daily diary Today at Slade at 07:15 each morning as well as reminders, useful information, live updates from school and other community events of interest.

Date of Post	Subject
Monday 25 September	Today at Slade, Welcome Maya
Tuesday 26 September	Today at Slade
Tuesday 26 September	European Day of Languages
Tuesday 26 September	Booking Period for Parent - Teacher Consultations opens soon
Wednesday 27 September	Today at Slade
Wednesday 27 September	Parent Bookings Success
Wednesday 27 September	Welcome Matt, Photographs Being Taken
Wednesday 27 September	Cake and Cookie Donations
Thursday 28 September	Today at Slade
Friday 29 September	Donations for Macmillan Cancer Support
Friday 29 September	Today at Slade
Friday 29 September	Macmillan Coffee Morning
Friday 29 September	Celebration Assembly
Friday 29 September	Thankyou, PTA!
Friday 29 September	Lost Property and Cake Sale



SLADE+

YOUR WAYS TO PAY

We have tried to make paying for special lessons, wraparound provision, school trips and visits amongst other events that happen through the year as easy as possible. Please see our handy guide here on the current prices and 'Way to Pay' when required.

We always make sure that all trips and special events are priced as fairly as possible but are acutely aware that extra costs can be tricky for our families. If you would like to discuss payment options for any extra spend at Slade, please contact us at anytime and confidentially via office@slade.kent.sch.uk.

School Dinners

School Dinners provided by Nourish Contract Catering are free to the following groups: EYFS Classes, Year 1 Classes, Year 2 Classes, EYFS, KS1 AND KS2 pupils eligible for benefits related Free School Meals

School Dinners provided to KS2 (Year 3-6) children are charged at £2.40 per meal.

Credit should be loaded onto the Meals section of your Arbor account.

Yeti's Wraparound Provision (Breakfast and After School Clubs)

Breakfast Club is charged at £4.20 per session

After School Club is charged at different pricepoints:

Until 16:30: £4.20 // Until 17:30: £8.60

If your child participates in an after school activity, please let us know via yetis@slade.kent.sch.uk and we charge only for the 16:30 - 17:30 time at £ 4.40.

Payment should be made via your online SCOPAY account. Please email yetis@slade.kent.sch.uk if you require a login to SCOPAY.

School Trips and other Special Events

You will be notified of the dates and costs of school trips or special events by email.

Payment and consent will be made via the Trips section of your Arbor account.

Paid For, Independent Clubs and Activities

Slade does not take payment for independently run clubs. All payment and correspondence should be directed to the club organiser.

Swimming Lessons

6 Swimming lessons are taken by all KS2 classes at a cost of £17.00.

Payment and consent will be made via the Trips section of your Arbor account once you have been advised of the dates of the sessions.

SLADE+

EXTRA CURRICULAR CLUBS NEXT WEEK

Monday

Year 1-4 French

KS1 and KS2 Musical

Theatre

KS2 Football

Year 4-6 Netball

EYFS & KS1 Multi Skills

KS1 and KS2 BSL

Tuesday

Year 3 and 4 Choir

KS1 Street Dance:

KS2 Cricket

Year 4 Pets

Wednesday

Year 4 -6 Choir

KS2 Sports Club

KS1 and KS2 Athletics

KS1 and KS2 Art

Thursday

Year 5 & 6 Signing

Choir

Year 2 & 3 Sports Club

Year 4-6 Dance

Year 5 Pets

Friday

Year 5 and 6 Sports

Club

EYFS, KS1 & KS2

Karate

[Full Details: Times, Prices, Ways to Book and more via the school website](#)

Free Clubs run by staff at Slade with spaces

Free Clubs run by staff at Slade Currently Full

Paid Clubs: Contact Organiser for full details