

SLADE

PRIMARY SCHOOL



Inside this Issue:

02: From the Headteacher

03: For your Diary

04: Around School

05: Chair of Governors / Around School

06: Around School

07: PTA News

08: Wellbeing and Sport

09: Forest School

10: In Our Community

11: Our Communication to You

12: Slade Stats

13: Slade on X

14: Slade+

School Newsletter Term 1 Issue 7

Friday 20 October 2023

KAREN SLADE

FROM THE HEADTEACHER

Dear Parents and Carers,

It has been so very lovely to see and hear families from across all year groups browsing the books at our Scholastic Book Fair after school this week. Such a lovely selection of books to choose from! Huge thanks to all those who took the time to stop by to make a purchase! Many thanks too to our English Leaders for organising the event and to the team of staff who have given of their time this week enabling the fair to happen. We are very much looking forward to choosing some books for the library from the commission that your purchases has raised; so a huge thank you from us all.

Many thanks too to the parents and carers who attended our parent consultation meetings this week. We hope that you enjoyed meeting your child’s class teacher and hearing about how your child has settled into their new class and the progress that they have already made this term. For those that were unable to attend, then please contact your child’s class teacher at the class email address to arrange a meeting or a telephone call at a mutually convenient time for the start of Term 2.

Earlier this week we saw the welcome return of our ‘Who am I?’ day, a celebration of all that makes us special and unique. It was so lovely to see all the children and staff represent themselves by the clothes that they were wearing and the objects that they shared. There was a real buzz across the school during the afternoon as all the children learnt of each other’s cultures, religions and heritages; do read on into the newsletter to find out more and see some photos capturing this special afternoon.

Thank you to all the parents in Elmer and Gruffalo classes who attended the ‘Meet the Team’ meetings this week which were held in the small hall and included an overview of phonics teaching in the Early Years; plus, an opportunity to visit the Reception classrooms too! The slides from these sessions will be shared with all parents as they contain key information for the year ahead. In addition, do look out everyone for this month’s Maths newsletter which dropped into inboxes earlier this week. This month’s edition once again provides some great ideas for supporting your child with their maths learning whilst also launches our Times Tables Rock Stars Christmas themed competition too!

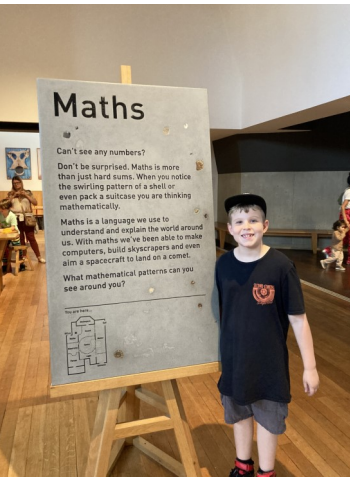
We have recently experienced a huge increase in the number of emails to the school office regarding non-urgent matters, frequently before the start of the school day and often requesting a response sooner than our 48-hour acknowledgment deadline. Frustratingly, the answers to these queries can more often than not be found in previous communications sent out from the school. Therefore, moving forward, please ensure that you have checked all previous letters and texts for the answer to your questions before contacting the school via email; remember also to check for information on our school website, ‘X’ feed and the Parent Rep WhatsApp groups too. Information regarding our various channels of communication and who to contact can be found further on in this newsletter and in our Communication Policy on the school website. Thank you in anticipation of your understanding and help with this matter.

Finally, as events continue to unfold in the Middle East our thoughts are with those in our school community who have themselves been personally affected, with family or friends caught up in the conflict. Remember, we are here to support in any way we can at this incredibly worrying time.

I hope that you all have a restful half term break next week and look forward to seeing you back in school at the start of Term 2 on Monday 30 October.

Have a lovely weekend,

Karen Slade



DIARY DATES

NEXT WEEK AT SLADE

Next Week:

Day	Event
Monday 30 October - Friday 27 October	October Break: School Closed to all pupils
Monday 30 October	First Day of Term 2
Tuesday 31 October	Closing Date for Year 6 Secondary School Applications via KCC website
Wednesday 1 November	
Thursday 2 November	
Friday 3 November	

Forest School and Swimming Next Week:

MONDAY	
TUESDAY	Pegasus Class Forest School
WEDNESDAY	Hippogriff Class Forest School
THURSDAY	Phoenix Class Forest School
FRIDAY	Sphinx Class Forest School

Further Ahead:

Tuesday 7 November

DRAGON CLASS SWIMMING

Please make sure that you have signed up and paid for these lessons via your Arbor account

Thursday 9 November

GRIFFIN CLASS SWIMMING

Please make sure that you have signed up and paid for these lessons via your Arbor account

Wednesday 15 November

EYFS INTAKE SEPTEMBER 24

OPEN MORNING

This event is sold out

SLADE JOURNAL

AROUND SCHOOL

Welcome to Slade, David

On Wednesday, we welcomed David to Slade for the first time. David joins us in Year 2 with Mrs Potter in Gnome Class.

We saw David at the end of his first day and Mrs Potter told us that he had settled immediately. We all hope you have enjoyed your first experiences with us, including a damp trip to Forest School yesterday.

Our warm welcome to David is extended to all of his family, with who we hope to share a long, happy and successful relationship.



Term 2 Activities

A reminder that registration for our selection of teacher led, free to attend Term 2 Activity Clubs is now open via your Arbor account.

A full list of the available activity clubs is posted on the website, here: [Term 2 Activities](#)

All Before, at lunch and After School Activities run each week of Term 2 up to and including Monday 4 December - Friday 8 December. They do not run on the final week of term.

Yeti's Wraparound provision is open each day of term including the last week and sessions can be booked now via SCOPAY.



No Nuts Please

Due to the risk of severe allergic reaction, please do not send children in to school with nuts or nut related products such as Nutella spread in breaktime snacks or lunchboxes.

We have a number of children and staff for who an allergic reaction to nuts can trigger a serious medical incident. Many thanks for your help and co-operation with this.



**No nuts in
this area due
to allergies**

october holiday week

October Break

We hope you have a wonderful October break next week.

Year 6 Bikeability Update

Due to sickness within the instructor's camp, the last two sessions of the Year 6 Bikeability were postponed today and yesterday. The children affected are those in Groups 2E and 2F and have been notified of the new dates.

A reminder that the rearranged dates are immediately following the break (Group 2E on Monday 30 October and 2F on Tuesday 31 October) so please don't forget the bike, helmet and suitable clothing. A full report and extra information from our friends at Bikeability will follow in the first issue of the newsletter in Term 2.

Badges and certificates will also be given out in Celebration Assembly on Friday 3 November.



Yeti's Cancellations

Please note that booked sessions at Yeti's can only be cancelled more than 24 hours before the session is to begin. This should be done via your SCOPAY account. The administration team are unable to refund bookings after this time.

SIMON GRIFFITHS

CHAIR OF GOVERNORS

Dear Parents and Carers,

As we reach the end of term 1, I hope you and your children have all enjoyed a positive start to the new school year. Over this term, the governing body started their annual cycle of meetings with our recent Full Governing Body (FGB) meeting, followed by meetings of our Finance & Property and Personnel & Professional Development committees.

At the FGB we held our annual elections for the roles of chair and vice-chair of governors. I was delighted to be reappointed to the role of chair for another year and I’m pleased to report Eleanor Hoyle was elected as our new vice chair. As he steps down from the role, I would like to publicly thank David Evans for his time as vice chair and for his continued support, particularly through his work monitoring the school’s finances.

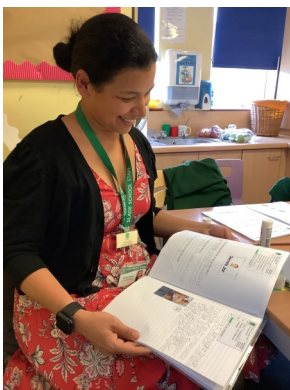
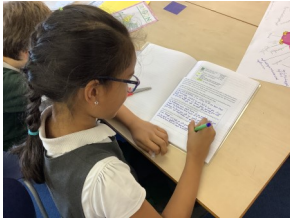
We also use the FGB to appoint our committee chairs and this year we have adopted a co-chairing approach to help develop governors skills and balance the workload. We appointed Scott Miller and Eleanor Hoyle as co-chairs of our Curriculum committee, Daniel van Bregt and David Evans as co-chairs of the Finance and Property committee and Sahar Zaidi-Shirazee and Stuart Concannon as co-chairs of our Personnel and Professional Development committee.

The governors look forward to working with the school this year, with a particular focus on the priorities identified in the school development plan of attainment and progress of our disadvantaged pupils, outcomes for all pupils and writing.

I will keep you updated on our work through the newsletter, but you can also find more information about the governing body on the school website.

I hope you all have an enjoyable and safe half term.

Simon Griffiths.



SLADE JOURNAL

AROUND SCHOOL



Maths Newsletter

Dropping into your email inbox yesterday would have been the latest Maths Newsletter from Mr Duffin. We hope you find this publication useful and fun to read.

We know that not everyone finds Maths easy or can become anxious about tackling new maths learning. The newsletter covers this and gives tips on how to encourage an anxious child to tackle Maths with a positive mindset.

We also celebrate the success of our latest Times Tables Rockstars, launch the Term 2 Christmas Film competition and take a look at the amazing, fun Maths at Home!

Times Tables Rockstars!

Don't forget to log into Times Tables Rockstars over the October break and join our Hall of Fame.

This week our winners are Esmee, Isaac, Scarlett and Liliana all of who received congratulations in today's Celebration Assembly.



SLADE JOURNAL

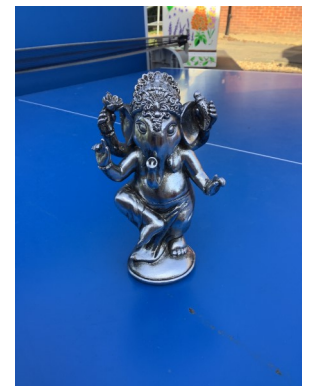
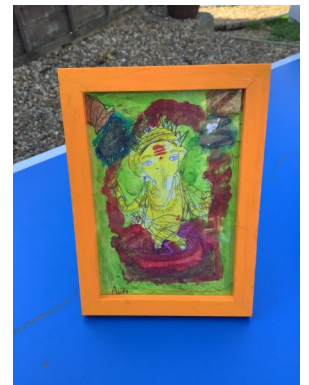
AROUND SCHOOL

Who Am I?

On Tuesday, we hosted our annual Who am I? Day, a little earlier in the year than usual with the aim on giving the children a useful and interesting way of introducing themselves to their new teacher - and to share new stories and information with their friends.

Who Am I? is a celebration of culture, language, interests and background. We spend the day sharing stories, exhibits and personal memorabilia with each other so we can find out more about what makes us all unique and special.

Thankyou to everyone who contributed items or stories on the day, including the wonderful array of dresses and costumes from across the world including in our front cover picture today from Wyvern Class which saw dress from Nepal and India. Across the school we are fortunate to have children from countless backgrounds and cultures - all of which were shared with pride on Tuesday!



From top to bottom, left to right: Images and statues of Lord Ganesh from the Hindu Faith, dress from Kazakhstan, traditional shirt from Taiwan, Chef Cook, Ballet, sentimental toys from Nepal, Artist in Residence, Patterns and dress from Poland and families from India.

TEAMS Passwords

Following feedback from our Class Reps, we have made the decision to use Microsoft TEAMS to share all home learning for pupils in Year 2 – 6 to ensure there is consistency across the school. All yeargroups will have access to TEAMS. Thankyou to the Class Reps and to Brian Clark, our IT Consultant who has been working tirelessly on this project.

Logins and Passwords

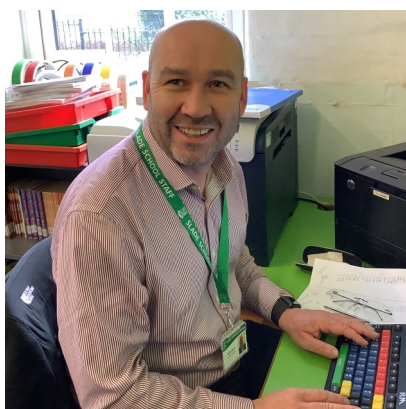
We have made the decision to ensure every child has an individual password in order to help teach the children the importance of keeping their password secure as well as to ensure our school system is kept as secure as possible.

Therefore, all children in Years 2-6 have been issued with a new password to access TEAMS. You will by now have these new details - they are stuck into the Reading Journal.

The children have spent this week practising how to use their new password ready for Term 2.

For our new families, or as a refresher, you can find additional information on our school website which explains how to use TEAMS via the following link. <https://www.slade.kent.sch.uk/attachments/download.asp?file=140&type=pdf>

If you have any further questions about the information in this letter then please speak to the class teacher in the first instance.



SLADE JOURNAL

PTA NEWS

Merlin Fireworks: Friday 10 November

Caroline Zuber, Slade PTA

We are excited to launch the build up to the annual fireworks display in today’s newsletter. Do please put this date and time in to your diary:

Friday 10 November, 5.30-8pm with display by the incredible Merlin Fireworks at 7pm.

Our resident superstar DJ Matt will be entertaining us on the playground, drinks by the fabulous Booze Box and BBQ hot dogs, candy floss, doughnuts, glow sticks and amazing hot chocolate all on sale. We are also excited to be running our first Rainbow Raffle on the night - lucky winners will receive a coloured hamper full of treats to enjoy with their family. Tickets are £1 and will be available during Firework ticket pre-sale events and on the night.

For tickets bought online, please write the name of your child/one of your children and their class in the message section at check out and wristbands will be sent home the week of the event.

Tickets will also be available to purchase in-person on the playground after half term.



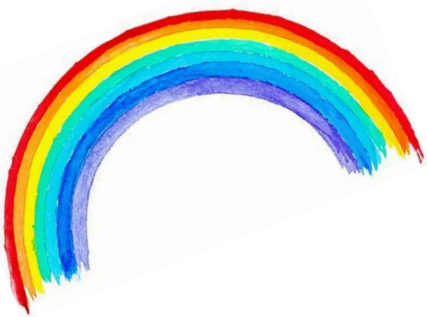
Rainbow Raffle!

We would be so grateful for help with donated items in the colour of your child's year group to help the PTA put together some fabulously colourful hampers:

- Reception - Red
- Year 1 - Pink
- Year 2 - Yellow
- Year 3 - Blue
- Year 4 - Green
- Year 5 - Orange
- Year 6 - Purple

Donations can include: food items (not chilled or perishable), soft/alcoholic drinks, sweets, chocolates, snacks, new books, games & toys, hair accessories, stationary, toiletries etc. *Please ensure any food items are nut free.

Donations will be collected at the main playground gate on Wednesday 1 November; Thursday 2 November & Friday 3 November.



Join us for a spectacular evening and book your tickets now via our SumUp page:



Posters with the QR code will also be available to scan in the playground area at drop-off and collection times for anyone reading this on the device they also use for scanning!

<https://sladepta.sumupstore.com/>

Slade PTA

Parent Teacher Association

FIREWORK NIGHT

FRIDAY 10 NOVEMBER

TICKETS:
ADULTS : £7.50
CHILDREN: £5
PRE-SCHOOL CHILDREN FREE

5.30PM-8PM
FIREWORKS AT 7PM
ENTRY VIA MAIN PLAYGROUND GATES

PREMIER FIREWORK DISPLAY BY MERLIN FIREWORKS

BOOZE BOX MOBILE BAR

SLADE'S SUPERSTAR DJ MATT

LUXURY HOT CHOCOLATE

BBQ HOT DOGS

CANDY FLOSS & DOUGHNUTS

CALM ZONE

RAINBOW RAFFLE

GLOW STICKS

BUY TICKETS ONLINE HERE
SLADEPTA.SUMUPSTORE.COM
TICKETS MUST BE PURCHASED IN ADVANCE

SLADE JOURNAL

SPORT, FITNESS AND WELLBEING

Tonbridge Champions (Again!)

The National League Trust Cup is back; readers from last year will know that our Year 5 and 6 Girls team reached the regional finals then after winning the Tonbridge Angels FC competition - and they have repeated that victory this year after the round robin and play-off competition that took place at Angels’ Longmead Stadium on Thursday.

The squad of Sophie, Lily, Olivia, Harriet, Victoria, Keeva, Malvina and Stella excelled all day, remaining unbeaten having won against Woodlands, St Augustine of Tunbridge Wells, Brenchley and Matfield, Bishops Chavasse and Paddock Wood in the group stage with only a draw against Pembury preventing a 100% success on the day.

The format of the competition means that there is a play off final between the top two in the group stage. The girls deservedly lifted the trophy again after the final in which they defeated Paddock Wood 3:1.

There were some fantastic moments throughout the day, standing out were goals from Sophie, Harriet and Olivia, Malvina and Lily in goal, with the skill and never-say-beaten attitude of Keeva and Stella - all of which made the perfect team of champions!

The girls go through to the next stage, details to be announced later in the year.

We had two boys teams take part in the competition as well; coming in 5th and 6th place which allowed them to play on the day for the Tonbridge Shield. Whilst it was not to be for the teams as far as progressing to the next stage of the National League Cup, they still had a fantastic day - the highlight was the Slade Derby (our two teams competing against each other) won by Slade ‘B’ on penalties!

With special thanks to Mrs Buckland who was home from home for the day - getting to coach and participate at Tonbridge Angels FC, where you will be able to find her supporting the local National League South side every other Saturday, Mrs Taylor and in particular to Ian Kington who took a team for the day and helped Mrs Ball immensely to organise the day and keep the teams safe and focused - thankyou Ian, we look forward to working with you again soon.



SLADE JOURNAL

FOREST SCHOOL

Term 2 Timetable

- Tuesday 31 October - Pegasus (Mrs Stephens and Mrs Berrill)
- Wednesday 1 November - Hippogriff (Miss Taylor)
- Thursday 2 November - Phoenix (Mr Osborne)
- Friday 3 November - Sphinx (Miss Lipman)
- Tuesday 7 November - Wyvern (Mrs Fordyce)
- Wednesday 8 November - Hydra (Mr Duffin)
- Thursday 9 November - Dragon (Mrs Worley)
- Friday 10 November - Griffin (Mrs Burnside)
- Tuesday 14 November - Elmer (Mrs Pearson)
- Wednesday 15 November - Pixie (Miss Elliott and Miss Maple)
- Thursday 16 November - Gruffalo (Mrs Hitchcock)
- Friday 17 November - Elf (Mr Louth)
- Tuesday 21 November - Gnome (Mrs Potter)
- Wednesday 22 November - Sprite (Mrs Hill)
- Thursday 23 November - Pegasus (Mrs Stephens and Mrs Berrill)
- Friday 24 November - Hippogriff (Miss Taylor)
- Tuesday 28 November - Phoenix (Mr Osborne)
- Wednesday 29 November - Sphinx (Miss Lipman)
- Thursday 30 November and Friday 1 December - Year 5 Cooking at Tonbridge School
Look out for further information nearer the time
- Tuesday 5 December - Wyvern (Mrs Fordyce)
- Wednesday 6 December - Hydra (Mr Duffin)
- Thursday 7 December - Dragon (Mrs Worley)
- Tuesday 12 December - Griffin (Mrs Burnside)
- Wednesday 13 December - Gruffalo (Mrs Hitchcock)
- Thursday 14 December - Pixie (Miss Elliott and Miss Maple)
- Friday 15 December - Elf (Mr Louth)

Winter Wear at Forest School



SLADE JOURNAL

IN OUR COMMUNITY

SPOOK-TACULAR ENTERTAINMENT

HAPPY HALLOWEEN

Sunday 29th October

1st Session 12pm-2pm 2nd Session 3:30pm - 5:30pm

Wicked Witch
Hunt

Suitable for
ages 5-12yrs

Ghoulish
Crafts

Spooky disco, games, arts & crafts,
fancy dress competition & snack box

Scan QR code
to book



**ANGELS
MARQUEE**
@ LONGMEAD

children £8,
Adults Free

Licence bar will be open for the adults

DEAR PARENTS AND CARERS

ARBOR EMAILS SENT THIS WEEK

Please take the time to read emails sent to you, we try to make sure that everything you are sent relates to your child, so nothing is irrelevant. If you would like further information on any email we send, please contact the class teacher or the school office for assistance.

Date of Communication	Subject	Sent To
Monday 16 October	Home Learning and TEAMS Passwords	Year 2-6 Parents
Monday 16 October	Dragon Class Swimming	Dragon Class Parents
Monday 16 October	Griffin Class Swimming	Griffin Class Parents
Monday 16 October	Invicta Grammar School Events	Year 5 and 6 Parents
Monday 16 October	Young Voices 24 Payments now Available	Participants Parents
Monday 16 October	Pet Club Donations	Participants Parents
Tuesday 17 October	Bikeability: Rearranged Dates	Participants Parents
Tuesday 17 October	EYFS Meet the Team	EYFS Parents
Wednesday 18 October	Pixie Class Forest School Highlights	Pixie Class Parents
Wednesday 18 October	Extra Curricular Activities: Term 2	All School
Thursday 19 October	Elf Class Forest School Highlights	Elf Class Parents
Thursday 19 October	Maths Newsletter: October	All School
Thursday 19 October	Football Festival Postponement	Participants Parents
Thursday 19 October	Wyvern Class Swimming Postponement	Wyvern Class Parents
Thursday 19 October	NHS Flu Vaccination Clinic	All School

HERE TO HELP

HOW TO CONTACT US

We are always keen to hear from you if you have a positive, negative comment to make about anything going on at school, or if you have a question or need clarification on anything we have sent or said.

We have a number of ways for you to reach out to us; please see the guide below to see where you should direct your question or comments in the first instance in order to make sure we are able to answer you as quickly as possible.

My child’s class learning , class activities, lessons, homework Wellbeing or pastoral support	Your child’s class email address:
Absence and Sickness, School Trips, Payments, School Events Special Educational Needs (SEND) General Enquiries	office@slade.kent.sch.uk
Admissions	admissions@slade.kent.sch.uk
Yeti’s Wraparound	General queries: and Childcare Voucher payments: yetis@slade.kent.sch.uk Late Collections: 01732 377760
School Lunches, Nourish Contract Catering	teresa@nourishcontractcatering.co.uk
Slade PTA	sladepta@yahoo.co.uk
The Governing Body and Chair of Governors	governors@slade.kent.sch.uk
Complaints	slaws@slade.kent.sch.uk
GDPR Information and Reporting	eugdpr@slade.kent.sch.uk or slaws@slade.kent.sch.uk

SLADE STATS

ATTENDANCE

Over a school year, we are due to be open for 190 days which equates to 380 sessions.
Registration takes place at 08:50 in the morning and after lunch in the afternoon.
Attendance is affected if a pupil is not present at school for any whole session including registration.

The class with the best attendance each week will win Attendance Ted.
Winners are announced via our X (formerly Twitter) feed @sladeprimarysch

Our Attendance Target

97.0%

Our Attendance This Week

94.7%

Our Attendance This Year

96.3%

Attendance percentage this year to date by yeargroup:

EYFS	95.0%	Year 2	97.8%	Year 5	96.5%
Year 1	95.0%	Year 3	96.5%	Year 6	95.5%
		Year 4	97.3%		

SLADE STATS

PUNCTUALITY

Registers are taken at 08:50.
It is important that the children are at school on time every day to prevent disruption and upset to their day and for the rest of their class.

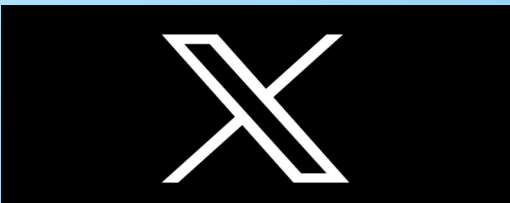
Punctuality Pup is awarded to the class with the best punctuality each week.
Winners are announced via our X (formerly Twitter) feed @sladeprimarysch

Pupils Late This Week

31

SLADE ON X

X-POSTS (Formerly Twitter)



We encourage you to follow us on the social media platform X, formerly known as Twitter.

We post a daily diary Today at Slade at 07:15 each morning as well as reminders, useful information, live updates from school and other community events of interest.

Date of Post	Subject
Monday 16 October	Today at Slade
Monday 16 October	Yeti’s Term 2 Booking Window Opening Soon
Tuesday 17 October	Today at Slade
Tuesday 17 October	Who am I?
Tuesday 17 October	Parent - Teacher Consultations
Wednesday 18 October	Today at Slade
Wednesday 18 October	Network Rail Talk with Year 5 and 6
Thursday 19 October	Today at Slade
Thursday 19 October	KS2 Tonbridge Angels Football Competition: Squad List
Thursday 19 October	KS1 Football Festival Postponement
Thursday 19 October	Maths Newsletter
Thursday 19 October	Tonbridge Champions!
Thursday 19 October	Book Fair and Parent - Teacher Consultations
Friday 20 October	Today at Slade
Friday 20 October	Celebration Assembly
Friday 20 October	Daily Mile Winners



SLADE+

YOUR WAYS TO PAY

We have tried to make paying for special lessons, wraparound provision, school trips and visits amongst other events that happen through the year as easy as possible. Please see our handy guide here on the current prices and ‘Way to Pay’ when required.

We always make sure that all trips and special events are priced as fairly as possible but are acutely aware that extra costs can be tricky for our families. If you would like to discuss payment options for any extra spend at Slade, please contact us at anytime and confidentially via office@slade.kent.sch.uk.

School Dinners

School Dinners provided by Nourish Contract Catering are free to the following groups:
EYFS Classes, Year 1 Classes, Year 2 Classes, EYFS, KS1 AND KS2 pupils eligible for benefits related Free School Meals

School Dinners provided to KS2 (Year 3-6) children are charged at £2.40 per meal.
Credit should be loaded onto the Meals section of your Arbor account.

Yeti’s Wraparound Provision (Breakfast and After School Clubs)

Breakfast Club is charged at £4.20 per session

After School Club is charged at different pricepoints:

Until 16:30: £4.20 // Until 17:30: £8.60

If your child participates in an after school activity, please let us know via yetis@slade.kent.sch.uk and we charge only for the 16:30 - 17:30 time at £ 4.40.

Payment should be made via your online SCOPAY account. Please email yetis@slade.kent.sch.uk if you require a login to SCOPAY.

School Trips and other Special Events

You will be notified of the dates and costs of school trips or special events by email.

Payment and consent will be made via the Trips section of your Arbor account.

Paid For, Independent Clubs and Activities

Slade does not take payment for independently run clubs. All payment and correspondence should be directed to the club organiser.

Swimming Lessons

6 Swimming lessons are taken by all KS2 classes at a cost of £17.00.

Payment and consent will be made via the Trips section of your Arbor account once you have been advised of the dates of the sessions.

SLADE+

EXTRA CURRICULAR CLUBS NEXT WEEK

Monday

Year 1-4 French

KS2 Football

Year 4-6 Netball

KS2 Drama & Musical
Theatre

EYFS & KS1 Multi Skills

KS1 and KS2 BSL

Tuesday

Year 3 and 4 Choir

KS1/KS2 Street Dance

KS2 Cricket

Sewing

Wednesday

Year 4 -6 Choir

Year 2/3 Gym

Year 6 Pets

KS1 and KS2 Athletics

KS1 and KS2 Art

Thursday

Year 5 & 6 Signing

Choir

Year 4-6 Dance

KS2 Sports

Friday

Year 5 and 6 Sports

Club

EYFS, KS1 & KS2

Karate

Full Details: Times, Prices, Ways to Book and more via the school website

Free Clubs run by staff at Slade with spaces

Free Clubs run by staff at Slade Currently Full

Paid Clubs: Contact Organiser for full details