

# SLADE PRIMARY SCHOOL



Inside this Issue:

02: From the Headteacher

03: For your Diary

04: Around School

05: Coronation Throne Ceremony

06: Around School

07: PTA News

08: Around School

09: Storm Ciarán

10: In Our Community

11: Our Communication to You

12: Slade Stats

13: Slade on X

14: Slade+

**School Newsletter Term 2 Issue 1**  
Friday 3 November 2023



# KAREN SLADE

## FROM THE HEADTEACHER

Dear Parents and Carers,

Welcome back to everyone from the half term holiday. I hope that you all had an enjoyable break and are looking forward to the busy term ahead.

Today was a very special day as we officially welcomed our winning ‘Coronation Throne’ back to school following its installation at the Tower of London over the summer! We were delighted that the Mayor of Tonbridge and Malling, Councilor James Lark, was able to preside over the ribbon cutting ceremony whilst accompanied to the ceremony by Mrs. Lark too. Alongside them both was Jill Busby who worked as the designated artist with our design team of children ‘Unity’ in addition to Catherine Jones, competition organizer, from Historic Royal Palaces. Thankfully the sun shone for our outdoor ceremony during which those present heard the children in the design team talk so passionately and confidently about the design process and how they felt when seeing their designs brought to life. A very proud, memorable moment for all of us in school; well done and thank you everyone.



This week we welcomed three new members to our Slade team of staff. Firstly, we are delighted that Katie Brennan has joined us as a Higher-Level Teaching Assistant, working primarily in Key Stage 2, and bringing with her a wealth of experience from her time in the same role at Chiddingstone Primary School. We welcome too Helena Horsman and Rebecca Darby who both join our growing team of Teaching Assistants providing individualised support for some of our pupils lower down the school. We are delighted to have you all on Team Slade and hope that you will soon feel at home here in school.



Congratulations to Sarah Meers, Class Teacher and Phase Leader, on the safe arrival of her baby girl Ada who was born safe and well at the start of the half term break. I am sure that you all join with me in sending best wishes to Sarah and her family; we very much look forward to some cuddles with baby Ada and welcoming her to Slade in the not too distant future.



Please look out for Term 2’s year group newsletters which will all be dropping into your inboxes next week; these are a great opportunity for you to find out more of what your child will be learning throughout this term and offer ways in which you can support your child too. An additional feature this term is the inclusion of the key vocabulary that your children will be learning in the curriculum areas to be taught this term. We would really appreciate your help in talking about these words with your children at home and encouraging them to use them more frequently when discussing their learning with you. As always, do get in touch with your child’s class teacher in the first instance should you have any queries regarding your child’s learning this term.



Finally, a polite reminder that whilst all members of the staff team at Slade are here to help and support you with any queries or concerns that you may have there is the expectation that all members of our school community are treated with respect and kindness when you are communicating with us. This includes when on the telephone, within an email or when speaking to any member of staff in person. Aggressive and threatening behaviour towards any member of my staff team is not accepted, will not be tolerated and will be dealt with accordingly in line with the appropriate school policy.



Have a lovely weekend everyone and remember to be kind.

Karen Slade

# DIARY DATES

## NEXT WEEK AT SLADE

### Next Week:

Day	Event
Monday 6 November	Year 4 Diwali Day - See previous email
Tuesday 7 November	
Wednesday 8 November	
Thursday 9 November	
Friday 10 November	From 17:30 - PTA Fireworks Event and Display This is an all ticket event - please see page 7

### Forest School and Swimming Next Week:

MONDAY	
TUESDAY	Wyvern Class Forest School
WEDNESDAY	Hydra Class Forest School
THURSDAY	Dragon Class Forest School
FRIDAY	Griffin Class Forest School

### Further Ahead:

Monday 13 November

PARAMEDIC AND AMBULANCE  
TEAM VISITING EYFS CLASSES

Staying safe in the Community  
Project

Wednesday 15 November

EYFS INTAKE SEPTEMBER 24  
OPEN MORNING

This event is sold out

Wednesday 22 November

EYFS INTAKE SEPTEMBER 24  
OPEN MORNING

This event has a limited number  
of tickets available



# SLADE JOURNAL

## AROUND SCHOOL

### Welcome to Slade

This week we have seen lots of new faces join the Slade family and we would like to offer a very warm welcome to them all.

Firstly, we are delighted to welcome back to Slade, Bryher, who has settled quickly and seamlessly into Mr Duffin’s Hydra Class in Year 5. It is great to see you again Bryher.

Mrs Hill has been thrilled to say hello to Elsie, who has started in her Year 2 Sprite Class this week. Elsie has brought with her a beaming smile and seems to be enjoying life in Sprite alongside her new friends.

Our best wishes are extended to the families of Bryher and Elsie, with who we look forward to enjoying a long, happy and successful relationship.

On the staffing front, we would like to introduce you to three new members of the team - the first of which needs no introduction:

**Helena Horsman** - Helena has made the short transfer from the kitchen to the classroom! Former Head Cook with Nourish Contract Catering, Helena has joined Slade this week as a one to one Learning Support Assistant. Nourish’s loss is certainly our gain and Helena has settled into the new role straight away. No news on whether she has enjoyed a school dinner as yet!

**Rebecca Darby** - Rebecca joins us in the same capacity, as a one to one Learning Support Assistant. After raising her own family, Rebecca is using her expertise to further enhance the support to the teaching teams here at the school.

**Katie Brennan** - Finally, it is great to have Katie on board as our new Higher Level Teaching Assistant. Katie will be working across the school with every class, covering the class teacher in short absences such as planning time, illness or attendance on a course. She joins Sarah Luffingham and Hazel Smith in this role.

Helena, Rebecca and Katie have been spending this week getting to know the school, the children and their new colleagues as well as undertaking vital training. We wish them all well in what we hope will become a memorable time at Slade.



### Reading at Slade

We are looking for volunteers to help children across Slade with their reading. If you, or anyone you know, would be interested in listening to readers of all ages we would love to hear from you.

Volunteering will mean a weekly commitment of between 30 minutes and 1 hour listening to and encouraging individual children with their reading progress. You will receive training on how to provide constructive support to the children and their reading

All offers of help are welcome, but would be subject to the successful completion of a DBS check via the school. Year 6 teacher Alison Burnside is co-ordinating our reading volunteers, to register your interest, please email Alison directly via [griffin@slade.kent.sch.uk](mailto:griffin@slade.kent.sch.uk).

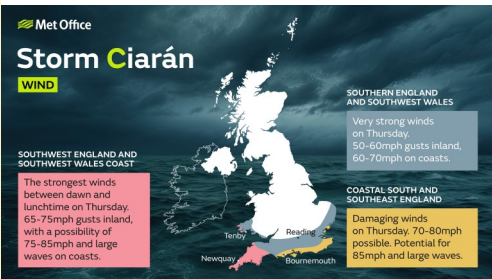


### Storm Ciarán

Due to the very wet and windy weather caused by this week’s Storm Ciarán, a number of events were postponed including the Year 3 and 4 Golf Festival and Forest School for Phoenix Class as well as today’s KS1 Daily Mile Winners trip to the park. We were also unable to provide a Road Crossing Patrol yesterday.

Thankyou to everyone for taking extra care when driving in the local area and when crossing the road without the patrol.

The postponed events have already been rearranged - the Golf for next Wednesday and the park visit for Gnome and Sprite Classes for next Friday, 10 November.





# SLADE JOURNAL

## CORONATION THRONE CEREMONY

Today has been a very special day in the long history of Slade Primary School.

We have been honoured to have been joined by invited guests who have visited us this afternoon to celebrate the official unveiling of our award winning Coronation Throne, which was part of the Tower Of London's Coronation Trail during the summer. It was visited by hundreds of thousands of visitors before being transported back home to Slade for placing in its new permanent residence as reported in our newsletter on Friday 6 October.

Top of the invite list were all of the children who were part of the design team last winter: Imogen and Francesca who are now at Tunbridge Wells Girls Grammar and St Gregory's Catholic School respectively as well as current pupils Akshara, Zac, Charlotte, Sai, Malvina, Henley and Ellie alongside our dedicated artist from Wild in Art, Jill Busby and her colleague from Historic Royal Palaces, Catherine Jones both of who joined us at the very start of the project and who you may remember from our newsletter articles last year. The design team was completed by our own Wellbeing Champion, Wendy Ball, who oversaw the project from start to its eventual glorious finish culminating in today's ceremony.

We were also incredibly pleased to be accompanied by Polly Sharman our Kent County Council Schools Improvement Officer and Deputy Chair of Governors, Eleanor Hoyle.

The VIP line up was completed by The Worshipful the Mayor of Tonbridge and Malling Councillor James Lark (Con, Bourne Ward) and the Mayoress Jill Lark as everyone gathered around the bench, which overlooks the entrance to the school, perched high over the field for the special ceremony which took place this afternoon.

Please take a minute to appreciate the superb artwork and very special bench if you are visiting us for the fireworks display next week, you will see it as you walk from the stalls and playground events down to the field for the display.

The occasion was set to speeches from Mrs Slade, Mrs Ball and the children themselves as they described the pleasure and pride at winning the competition and then seeing their piece alongside the 14 other winning entries as part of the trail at the world famous venue in Central London, especially given the position given to the Slade bench, situated under the gaze of the iconic picture of the capital city; Tower Bridge.

The Mayor, Cllr Lark spoke at the event of his pride at seeing a school from Tonbridge win such a prestigious competition and for firmly putting Slade on the map. He also pondered how far and wide pictures of our throne will have been shared by visitors to the Tower of London from the seven continents.

Catherine spoke fondly about being part of the project which attracted over 1500 entries from schools across the UK. She told the audience how our design first caught her eye when she received the entry. She told us how much she enjoyed walking past the bench on her way to and from work each day.

Jill took the opportunity to say what a pleasure it had been working alongside the group from Slade and told how art can play a vital role in improving wellbeing in people of all ages.

Wendy opened the speeches which also included each of the children providing a lovely recap of the project they ran and saw from design to the throne we see in front of us today. She spoke with enthusiasm about how engaged the children were throughout the project and how it has helped them grow in confidence, not only with their artistic skills but in everyday life.

Thankyou to all of our special guests for coming along today and to everyone who has played a part in the project. We are all incredibly proud of you all and very happy that the throne will be such a beautiful and memorable legacy of your efforts for generations to come.





# SLADE JOURNAL

## AROUND SCHOOL

### RBL Poppy Appeal

We are again supporting the Royal British Legion with their annual Poppy Appeal, raising money to provide support to the Armed Forces community in six key areas: Financial Support, Advice, Employment, Mobility, Housing and Mental Health.

The merchandise trays and collection tins will be travelling around school from Monday and in addition to poppies that can be worn on clothing, they also have a selection of reflectors, wristbands and 20cm ruler snapbands as modelled by Sebastian (right).

There is no set charge for each item, so if you do want to donate any loose change, please send this with your child from Monday in a sealed and named envelope.

Mrs Slade will be holding a minute of reflection on the morning Friday 10 September to enable the Slade community to pay respect to the victims on all sides of conflicts past and present, or to remember a family member or someone special in their lives.



### Year 6 Bikeability

Congratulations to the 41 children out of Griffin and Dragon Classes who signed up for this year's Bikeability programme. They have all passed their Level 1 and 2 badges and have been able to experience riding along the local roads safely.

We are extremely grateful to our friends from the KCC Bikeability team who include Yolanda, Alan, Viv, Louise and Kate for taking the children out in the playground to educate them on bicycle maintenance and control and then riding styles, road positioning and road law out and about around the local area.

The participating children all received their certificates in this morning's celebration assembly.



The Bikeability Trust is a Charitable Incorporated Organisation with the vision to ensure everyone has the confidence to cycle and enjoy this skill for life. The Trust manages, develops and promotes the Bikeability programme on behalf of the Department for Transport. Find out more here: <https://www.bikeability.org.uk/get-cycling/>



# SLADE JOURNAL

## PTA NEWS

### Merlin Fireworks: Friday 10 November

Caroline Zuber, Slade PTA

We are excited to launch the build up to the annual fireworks display in today’s newsletter. Do please put this date and time in to your diary:

Friday 10 November, 5.30-8pm with display by the incredible Merlin Fireworks at 7pm.

Our resident superstar DJ Matt will be entertaining us on the playground, drinks by the fabulous Booze Box and BBQ hot dogs, candy floss, doughnuts, glow sticks and amazing hot chocolate all on sale. We are also excited to be running our first Rainbow Raffle on the night - lucky winners will receive a coloured hamper full of treats to enjoy with their family. Tickets are £1 and will be available during Firework ticket pre-sale events and on the night.

For tickets bought online, please write the name of your child/one of your children and their class in the message section at check out and wristbands will be sent home the week of the event.

Tickets will also be available to purchase in-person on the playground after half term.



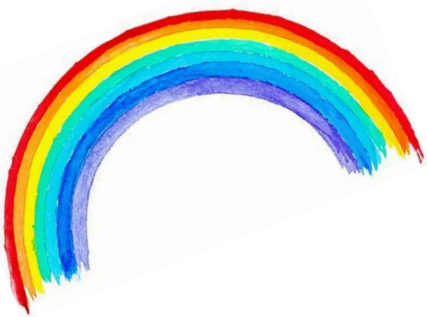
### Rainbow Raffle!

We would be so grateful for help with donated items in the colour of your child's year group to help the PTA put together some fabulously colourful hampers:

- Reception - Red
- Year 1 - Pink
- Year 2 - Yellow
- Year 3 - Blue
- Year 4 - Green
- Year 5 - Orange
- Year 6 - Purple

Donations can include: food items (not chilled or perishable), soft/alcoholic drinks, sweets, chocolates, snacks, new books, games & toys, hair accessories, stationary, toiletries etc. \*Please ensure any food items are nut free.

Donations will be collected at the main playground gate on Wednesday 1 November; Thursday 2 November & Friday 3 November.



Join us for a spectacular evening and book your tickets now via our SumUp page:



Posters with the QR code will also be available to scan in the playground area at drop-off and collection times for anyone reading this on the device they also use for scanning!

<https://sladepta.sumupstore.com/>

Slade PTA

Parent Teacher Association

FIREWORK NIGHT

FRIDAY 10 NOVEMBER

TICKETS:  
ADULTS : £7.50  
CHILDREN: £5  
PRE-SCHOOL CHILDREN FREE

5.30PM-8PM  
FIREWORKS AT 7PM  
ENTRY VIA MAIN PLAYGROUND GATES

PREMIER FIREWORK DISPLAY BY MERLIN FIREWORKS

BOOZE BOX MOBILE BAR

SLADE'S SUPERSTAR DJ MATT

LUXURY HOT CHOCOLATE

BBQ HOT DOGS

CANDY FLOSS & DOUGHNUTS

CALM ZONE

RAINBOW RAFFLE

GLOW STICKS

BUY TICKETS ONLINE HERE  
SLADEPTA.SUMUPSTORE.COM  
TICKETS MUST BE PURCHASED IN ADVANCE



# SLADE JOURNAL

## AROUND SCHOOL

### Kent Community Health Flu Vaccinations

We are looking forward to welcoming the School-aged Immunisation Service nurses back to Slade on Monday 11 December as they carry out the administration of flu vaccinations to children across the school.

We encourage families to take up the offer of these vaccinations where possible. The vaccination is given as a quick and painless spray in the nose.

You should complete the online form at [Home - Kent family \(kentcht.nhs.uk\)](http://Home - Kent family (kentcht.nhs.uk) .) . This form should be completed in the following circumstances:

- You will be providing consent for the vaccination to be given in school
- You will be refusing consent for the vaccination to be given in school
- You do not need the vaccination to be given in school as you have already arranged for this to happen via a clinic or GP

Full information is included in our email of Thursday 19 October. If you have any questions please contact the immunisation team directly using the following methods:

Text chat: [07401320923](https://www.kentcht.nhs.uk/imms)  
Live chat via the website: [family.kentcht.nhs.uk/imms](http://family.kentcht.nhs.uk/imms)  
Email: [kchft.cyp-immunisationteam@nhs.net](mailto:kchft.cyp-immunisationteam@nhs.net)  
Telephone: [0300 123 5205](tel:03001235205)



### Milky Mammoths in Year 3

Next Tuesday, the children in both Pegasus and Hippogriff Classes in Year 3 will be making Woolly Mammoths out of 2.3 litre (4 pint) milk cartons.

If you have any used 2.3 litre/4 pint plastic bottles at home and are able to bring them to school for them to be turned into a mammoth, we would be very grateful.

If you are in Year 3, please just pass your carton donation to your class teacher, everyone else is welcome to drop them off at the school office and we will make sure they are passed on.

Many thanks in advance for any milk carton donations you are able to make.



### Arbor Payments

We currently have payment screens for the following events open on Arbor. If your child is participating in any of these events or lessons, can you please make sure that payment is made as soon as possible to allow for the event to take place.

- **Year 6 Tuesday Swimming (Dragon Class) - £17.00**
- **Year 6 Thursday Swimming (Griffin Class) - £17.00**

Swimming payments to be made by 23:59 on the day before the first session

- **Year 4 Diwali Workshop - £12.00**

Workshop payment to be made by 23:59 on Sunday 5 November

- **KS2 Choir Young Voices (Participants will have already filled out an order form) - payment required for t-shirt, adult ticket and coach travel**

Young Voices personal order payments to be made by 23:59 on Friday 10 November and coach travel to be paid by 23:59 on Monday 4 December.





# SLADE JOURNAL

## STORM CIARÁN PHOTO DIARY



Storm Ciarán caused the predicted problems across the south of the country as well as further afield across the rest of Europe.

Given the issues elsewhere, we were lucky to escape with flooding to the outside areas of the school and some inconvenience to the timetable.

Hopefully the flood water will subside over the weekend, however further heavy rain is expected tomorrow. We will keep you updated with any alterations to Forest School or to the outside clubs timetable. Please presume that everything is running to plan unless we inform you otherwise.





# SLADE JOURNAL

## IN OUR COMMUNITY

### Introducing Kidical Mass Bicycle Ride and the Bicycle Mayor of Tonbridge

In the week that our annual Bikeability sessions have concluded and when we met the new Mayor of the local council, we are excited to bring this altogether and introduce you to the inaugural Tonbridge Kidical Mass Ride and to another mayor: Alice Thomas - our very own [Bicycle Mayor of Tonbridge](#)!

Alice has been in touch to invite everyone along to the Tonbridge ride, she started by telling us about Kidical: ‘There are over 400 Kidical Mass Bicycle Rides happening all over Europe. The collective aim is to provide a safe and enjoyable experience of cycling and wheeling on public streets, especially for the younger and physically vulnerable; to campaign for public streets to be made safe and accessible to cyclists and wheelers of all types, ages, and physical abilities; to celebrate the freedom given by independent, affordable, and sustainable travel modes and to attract, include, and represent a wide breadth of the public.

Cycling is not only a great way for children to stay fit and healthy, it's also an affordable mode of transport to school. It also reduces the congestion on our local Tonbridge roads, thus less carbon emissions our children are breathing in.’

Alice continued by concentrating on our own local Kidical Mass Ride: ‘The ride is on 30 December at 11am. And will be a short 2 mile circular ride so even the little siblings on balance bikes can join in. Here is the [Facebook Community Group](#) and here's the [event](#) to sign up and join.’

Finally, to get an idea of what a ride looks like, Alice has produced a video from the similar event in East Grinstead: [East Grinstead Kidical Mass Ride this year](#)



Family Fun

Free

Sat 30th December • 11am

Start & Finish



By the Christmas Tree  
opposite Pizza Express  
What3Words: [///goal.doctor.finds](#)

- A festive family friendly bike ride
- Short 1-2 mile ride
- Safety in numbers
- Fully Marshalled
- All ages and abilities welcome:

Sign up & for more info



Find us on   
Scan here for  
the Kidical Mass  
Facebook Page

balance bikes / bikes / mobility scooters  
children / parents / grandparents / carers

We're excited to introduce the inaugural Kidical Mass Ride, finally coming to Tonbridge! Kidical Mass is happening across 400 UK and European cities and towns. It's a worldwide body of people with the same vision, to prioritise everyone, but especially, our children, young people and those with physical disabilities to be able to safely and independently travel by bicycle or wheels in and around Tonbridge!

#### The Aims & Benefits of Kidical Mass Tonbridge:

- It's FREE
- To provide a safe and enjoyable experience of cycling and wheeling on public streets, especially for the younger and physically vulnerable.
- To campaign and raise awareness for public streets to be made safe and accessible to cyclists and wheelers of all types, ages, and physical abilities.
- To celebrate the freedom given by independent, affordable, and sustainable travel modes.
- To attract, include, and represent a wide breadth of the public (families, ethnicities, age groups). Basically anyone can attend.

You don't have to be young and able bodied to be involved! Children of all ages, mums, dads, carers, those with health conditions or impairments, aunts, uncles, grandparents, great grandparents.



[kidicalmasstonbridge@gmail.com](mailto:kidicalmasstonbridge@gmail.com)



[Facebook.com/groups/kidicalmasstonbridge](https://www.facebook.com/groups/kidicalmasstonbridge)





# DEAR PARENTS AND CARERS

## ARBOR EMAILS SENT THIS WEEK

Please take the time to read emails sent to you, we try to make sure that everything you are sent relates to your child, so nothing is irrelevant. If you would like further information on any email we send, please contact the class teacher or the school office for assistance.

Date of Communication	Subject	Sent To
Friday 27 October	Nourish Contract Catering Menu	All School
Monday 30 October	Hindu Diwali Workshop	Year 4 Parents
Monday 30 October	Class Daily Mile Competition Winners	Year 2 Parents
Tuesday 31 October	Pegasus Class Forest School Highlights	Pegasus Class Parents
Wednesday 1 November	Parent Readers	All School
Wednesday 1 November	Storm Ciarán: KS1 Daily Mile Park Visit Postponement	Year 2 Parents
Thursday 2 November	Storm Ciarán: Forest School Cancellation	Phoenix Class Parents
Thursday 2 November	Storm Ciarán: No Road Crossing Patrol	All School

### HERE TO HELP

### HOW TO CONTACT US

We are always keen to hear from you if you have a positive, negative comment to make about anything going on at school, or if you have a question or need clarification on anything we have sent or said.

We have a number of ways for you to reach out to us; please see the guide below to see where you should direct your question or comments in the first instance in order to make sure we are able to answer you as quickly as possible.

My child’s class learning , class activities, lessons, homework	
Wellbeing or pastoral support	Your child’s class email address:
Concerns about bullying and behaviour	<i>classname@slade.kent.sch.uk</i>
Absence and Sickness, School Trips, Payments, School Events	
Special Educational Needs (SEND)	<a href="mailto:office@slade.kent.sch.uk">office@slade.kent.sch.uk</a>
Admissions	<a href="mailto:admissions@slade.kent.sch.uk">admissions@slade.kent.sch.uk</a>
Yeti’s Wraparound	General queries: and Childcare Voucher payments: <a href="mailto:yetis@slade.kent.sch.uk">yetis@slade.kent.sch.uk</a>  Late Collections: 01732 377760
School Lunches, Nourish Contract Catering	<a href="mailto:teresa@nourishcontractcatering.co.uk">teresa@nourishcontractcatering.co.uk</a>
Slade PTA	<a href="mailto:sladepta@yahoo.co.uk">sladepta@yahoo.co.uk</a>
The Governing Body and Chair of Governors	<a href="mailto:governors@slade.kent.sch.uk">governors@slade.kent.sch.uk</a>
Complaints	<a href="mailto:slaws@slade.kent.sch.uk">slaws@slade.kent.sch.uk</a>
GDPR Information and Reporting	<a href="mailto:eugdpr@slade.kent.sch.uk">eugdpr@slade.kent.sch.uk</a> or <a href="mailto:slaws@slade.kent.sch.uk">slaws@slade.kent.sch.uk</a>



# SLADE STATS

## ATTENDANCE

Over a school year, we are due to be open for 190 days which equates to 380 sessions.  
Registration takes place at 08:50 in the morning and after lunch in the afternoon.  
Attendance is affected if a pupil is not present at school for any whole session including registration.

The class with the best attendance each week will win Attendance Ted.  
Winners are announced via our X (formerly Twitter) feed @sladeprimarysch

Our Attendance  
Target

97.0%

Our Attendance  
This Week

95.2%

Our Attendance  
This Year

96.2%

### Attendance percentage this year to date by yeargroup:

EYFS	95.6%	Year 2	98.3%	Year 5	99.0%
Year 1	94.1%	Year 3	93.1%	Year 6	90.8%
		Year 4	95.8%		

# SLADE STATS

## PUNCTUALITY

Registers are taken at 08:50.  
It is important that the children are at school on time every day to prevent disruption and upset to their day and for the rest of their class.

Punctuality Pup is awarded to the class with the best punctuality each week.  
Winners are announced via our X (formerly Twitter) feed @sladeprimarysch

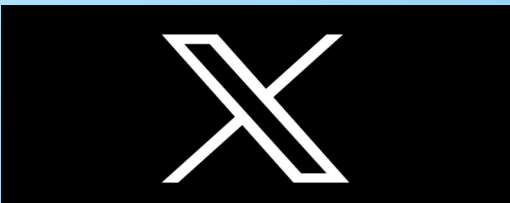
Pupils Late  
This Week

21



# SLADE ON X

## X-POSTS (Formerly Twitter)



We encourage you to follow us on the social media platform X, formerly known as Twitter.

We post a daily diary Today at Slade at 07:15 each morning as well as reminders, useful information, live updates from school and other community events of interest.

Date of Post	Subject
Monday 23 October	Halloween at Tonbridge Angels
Tuesday 24 October	Secondary School Appications
Wednesday 25 October	School Run Activity Clubs
Thursday 26 October	New Nourish Menu
Thursday 26 October	Cost of Nourish Dinners and Free School Meals
Friday 27 October	PTA Fireworks
Friday 27 October	Next Week at Forest School
Monday 30 October	Term 2 and local roadworks
Tuesday 31 October	Today at Slade
Tuesday 31 October	Bikeability Action
Wednesday 1 November	Today at Slade
Thursday 2 November	Storm Ciarán
Thursday 2 November	Today at Slade
Friday 3 November	Today at Slade
Friday 3 November	Celebration Assembly
Friday 3 November	Parking Closed
Friday 3 November	Coronation Throne Unveiling

Slade Primary School

@SladePrimarySch · 8h

Due to the strong wind and rain from Storm Ciarán expected to last the rest of the day, the following applies:

✗

The Road Crossing Patrol will not be active today

✗

Phoenix Class Forest School is cancelled

✓

School remains fully open otherwise

#StormCiarán

Slade Primary School

@SladePrimarySch · Oct 31

Our last Bikeability group are out today learning about and having a go at riding on the local roads. They can now signal accurately and manage a T-Junction safely.

Thankyou to everyone @BikeabilityUK for another successful and fun set of courses for our Year 6 children.

Slade Primary School

@SladePrimarySch

A super first week of term for a our pupils of the week, celebrating with a certificate from Mrs Slade:

1 River & Erin

1 Pippa & Jacob

2 Amelia & Esle

2 Mia & Lily

4 Lily & Darcy

5 Oliver & Bryher

6 Jack & Zach

Well done everyone! 🌟🌟🌟

Slade Primary School

@SladePrimarySch · 19s

This afternoon, we have been delighted to be joined by the Mayor @TMBC\_Kent, Cllr James Lark who cut the ribbon for the official unveiling of our Coronation Thone.

Thankyou to everyone who came along for this very special occasion, including the whole of the design team.

Historic Royal Palaces and 2 others

Slade Primary School

@SladePrimarySch · Oct 24

Please refer to the @Kent.gov website for full information: kent.gov.uk/education-and-...

Apply here: kent.cloud.service-synergy.com/SynergyAdmIns...

If in doubt call 03000 41 21 21 for the KCC Education Helpline.

Slade Primary School

@SladePrimarySch · Oct 26

School meals are free to children eligible for Benefits Related Free School Meals (check eligibility here: kent.gov.uk/education-and-... & to everyone in EYFS & KS1.

@NourishContract meals cost £2.45 to all other children. Meals must be paid for in advance via your Arbor account.

Slade Primary School

@SladePrimarySch · 1h

Our overall attendance this week has been 99.2%, across the year since 1 September attendance at Slade is 96.2%.

The champion classes this week are:

🏆 Wyvern Class (99.6% Attendance)

🏆 Sprite Class (0 late marks this week)



# SLADE+

## YOUR WAYS TO PAY

We have tried to make paying for special lessons, wraparound provision, school trips and visits amongst other events that happen through the year as easy as possible. Please see our handy guide here on the current prices and ‘Way to Pay’ when required.

We always make sure that all trips and special events are priced as fairly as possible but are acutely aware that extra costs can be tricky for our families. If you would like to discuss payment options for any extra spend at Slade, please contact us at anytime and confidentially via [office@slade.kent.sch.uk](mailto:office@slade.kent.sch.uk).

### School Dinners

School Dinners provided by Nourish Contract Catering are free to the following groups:  
EYFS Classes, Year 1 Classes, Year 2 Classes, EYFS, KS1 AND KS2 pupils eligible for benefits related Free School Meals

School Dinners provided to KS2 (Year 3-6) children are charged at £2.40 per meal.  
Credit should be loaded onto the Meals section of your Arbor account.

### Yeti’s Wraparound Provision (Breakfast and After School Clubs)

Breakfast Club is charged at £4.20 per session

After School Club is charged at different pricepoints:

Until 16:30: £4.20 // Until 17:30: £8.60

If your child participates in an after school activity, please let us know via [yetis@slade.kent.sch.uk](mailto:yetis@slade.kent.sch.uk) and we charge only for the 16:30 - 17:30 time at £ 4.40.

Payment should be made via your online SCOPAY account. Please email [yetis@slade.kent.sch.uk](mailto:yetis@slade.kent.sch.uk) if you require a login to SCOPAY.

### School Trips and other Special Events

You will be notified of the dates and costs of school trips or special events by email.

Payment and consent will be made via the Trips section of your Arbor account.

### Paid For, Independent Clubs and Activities

Slade does not take payment for independently run clubs. All payment and correspondence should be directed to the club organiser.

### Swimming Lessons

6 Swimming lessons are taken by all KS2 classes at a cost of £17.00.

Payment and consent will be made via the Trips section of your Arbor account once you have been advised of the dates of the sessions.

# SLADE+

## EXTRA CURRICULAR CLUBS NEXT WEEK

### Monday

Year 1-4 French

KS2 Football

Year 4-6 Netball

KS2 Drama & Musical  
Theatre

EYFS & KS1 Multi Skills

KS1 and KS2 BSL

### Tuesday

Year 3 and 4 Choir

KS1/KS2 Street Dance

KS2 Cricket

Sewing

### Wednesday

Year 4 -6 Choir

Year 2/3 Gym

Year 6 Pets

KS1 and KS2 Athletics

KS1 and KS2 Art

### Thursday

Year 5 & 6 Signing

Choir

Year 4-6 Dance

KS2 Sports

### Friday

Year 5 and 6 Sports

EYFS, KS1 & KS2

Karate

[Full Details: Times, Prices, Ways to Book and more via the school website](#)

Free Clubs run by staff at Slade with spaces

Free Clubs run by staff at Slade Currently Full

Paid Clubs: Contact Organiser for full details