

SLADE PRIMARY SCHOOL



Inside this Issue:

02: From the Headteacher

03: For your Diary

04: Around School

05: Focus on Pet Club

06: Around School

07: Christmas is Coming

08: Around School

09: Slade Sport

10: Forest School

11: Our Communication to You

12: Slade Stats

13: Slade on X

14: Slade+

School Newsletter Term 2 Issue 4

Friday 24 November 2023

KAREN SLADE

FROM THE HEADTEACHER

Dear Parents and Carers,

On Wednesday we held the final Open Morning of the year for prospective parents currently looking to choose a school for children who are due to start in September 2024. The morning was another opportunity for our visitors to hear about the provision on offer here at Slade followed by time to explore and see a typical Wednesday morning in action! It was lovely once again to receive so much positive feedback from our visitors about our fabulous children; here's an example to make you all feel very proud, "... your children were an absolute credit to the school and every year group's representatives were engaging and erudite as well as exceptionally keen to share their love of learning and the school." Well done and thank you children! Due to popular demand for tours, we will be holding an additional session in January for anyone who was unable to book a place this time around; please do share this information with anyone you know who would be interested to attend.

Many of you I know will already be planning ahead for Christmas and beginning the task of writing Christmas cards with your children. Whilst we love a 'real life' opportunity for the children to practise their writing skills we are also mindful of the cost involved in sending cards, not to mention the environmental impact that card sending can have too; 420 children each writing just a handful of cards is a lot of paper and card! Therefore, in order to try to reduce both cost and paper waste, we will once again be encouraging children to either send a virtual card to their class via the class email address or alternatively to send one card to the class which can then be shared and displayed in the classroom. Thank you for considering these options with your children before operation Christmas card writing gets under way!

Still with Christmas, thank you to our Class Reps who came into school on Thursday afternoon for this term's catch up during which we ran through all the key dates and arrangements for the Christmas festivities planned for the final weeks of term. All these dates have been shared via our usual communication channels, with reminders and updates scheduled to be sent in the coming days too, so please check your inbox in the first instance for answers to any queries that you may have. Remember also that your Class Reps are an additional source of information, on the class WhatsApp groups, once you have explored all communications sent by school. For anyone who is not yet part of a class group and would like to be included, then please do get in touch in order for us to let your Class Rep know following which the necessary arrangements will be made to get you added.

A reminder that the school gates are closed promptly at 8.50 each morning by which time all children need to be on school site, heading to class in time for their morning registration and getting ready to learn. If your child arrives at school after 8.50 then access to the school site is from the main car park entrance where your child's attendance will be registered at the side gate by either myself, Miss Garrett or Mrs. Wilmshurst (FLO). It is really important that all children are at school on time every day in order that they don't miss out on those vital first minutes of lessons at the start of each morning. Many thanks for your help and support in getting your children here and ready to learn on time.

Have a lovely weekend,

Karen Slade



DIARY DATES

NEXT WEEK AT SLADE

Next Week:

Day	Event
Monday 27 November	
Tuesday 28 November	
Wednesday 29 November	Hydra Class Cooking : Tonbridge School
Thursday 30 November	NHS Visit to Year 6: Questionnaire
Friday 1 December	Wyvern Class Cooking: Tonbridge School Nationwide Building Society: Talk with Year 5 Book Signing Event with Nicola Hill and Pip Clark - See page 8

Forest School and Swimming Next Week:

MONDAY	
TUESDAY	Phoenix Class Forest School Dragon Class Swimming
WEDNESDAY	
THURSDAY	Sphinx Class Forest School - This is a date alteration Griffin Class Swimming
FRIDAY	

Further Ahead:

Tuesday 5 December

-

Thursday 7 December

PUTTING ON A SHOW

EYFS, Year 1 and Year 2

Performances

09:30 & 14:00 Shows

Friday 8 December

CHRISTMAS DAY AT SLADE

Christmas Jumper / Non Uniform

PTA Sale for Children

Christmas Lunch

Monday 11 December

NHS FLU IMMUNISATION CLINIC

EYFS - Year 6

All Day

SLADE JOURNAL

AROUND SCHOOL

Term 3 at Yeti's

Planning turns to the new year next week when we open the booking window for Yeti's Wraparound Care Breakfast and After School Club for Term 3.

You will be able to book spaces at Yeti's via your SCOPAY account for dates between Wednesday 3 January and Friday 9 February inclusive from 20:00 on Monday 27 November.

A reminder that to book you must have credit in the SCOPAY account - this applies to customers who use childcare vouchers as well as card payments.

Using Government Tax Free Childcare Voucher system (National Savings)

Business Manager, Jill Westwood would like to remind all parents that to use childcare vouchers to pay for Yeti's sessions is easy, with the following to do:

'Just visit <https://www.gov.uk/apply-for-tax-free-childcare> which will take you through the steps to register. You choose Slade School with Hearing Impairment Unit (886/2155) and then the payments will come through to the school bank account.

Once you are registered, you transfer the payments to them, it is topped up and then arrives in our bank account a few days later.

Once we have received the payment into our bank account, the voucher is processed and the credit is added to your account. Please let us know via finance@slade.kent.sch.uk if you register and what your account reference is so your payments are correctly identified in the bank statement. In addition, if using both the Breakfast Club and the After School Club, it helps if you let us know how much of the payment you would like using on each as they are separate 'purses' on SCOPAY.'



Siblings at Slade

The application period for parents of children born between 1 September 2019 and 31 August 2020 who require a place in the Early Years Foundation Stage at primary school from September 2024 is well and truly open and remains so until the deadline of 23:59 on Monday 15 January.

Applications should be made via: kent.gov.uk.

If you have already made, or are considering to make an application for a child who has a sibling already at Slade currently in Year R -5 we would be very grateful if you could let us know via admissions@slade.kent.sch.uk. This will quicken and tighten the checking process which will get underway between the deadline for applications and National Offer Day in the early summer.

**Kent
County
Council**
kent.gov.uk



Flu Vaccinations: Important Information

Every child at Slade is eligible to receive protection from the flu this winter through the NHS Kent Community Health Immunisation Service vaccination programme.

They say:

'Flu is an unpleasant illness and can cause serious complications. Having the flu vaccine protects your child and your family and friends, by preventing the spread of the virus. The vaccination is a quick and painless spray up the nose.'

The team will be visiting Slade on Monday 11 December.

Before that though, we require every family to complete the vaccination form - this must be done if you require the vaccine, wish to opt out of having it, or have already planned to have it via a clinic.

The form must be completed by Tuesday 5 December and can be found here:

<https://childconsent.co.uk/kchft/consent/search>



NHS

flu: 5 reasons to vaccinate your child

- 1. Protect your child**
The vaccine will help protect your child against flu and serious complications such as bronchitis and pneumonia
- 2. Protect you, your family and friends**
Vaccinating your child will help protect more vulnerable friends and family
- 3. No injection needed**
The nasal spray is painless and easy to have
- 4. It's better than having flu**
The nasal spray helps protect against flu, has been given to millions of children worldwide and has an excellent safety record
- 5. Avoid costs**
If your child gets flu, you may have to take time off work or arrange alternative childcare

For more information visit www.nhs.uk/child-flu

Flu Immunisation
Helping to protect children, every winter

SLADE JOURNAL

PET CLUB CULTURE

Mickey and Luca Go Ferreting Around

Jaxon from Gnome Class thrilled those enrolled onto Mrs Pearson's Year 6 Pet Club last week when he brought along his own ferret to show.

Jaxon was very excited to be able to show the older children two of his four ferrets, Luca and Mickey, as well as being able to talk about owning ferrets as pets and what it takes to look after them at home.

We were lucky enough to be able to talk to Jaxon:

'I have three ferrets called Luca, Minnie and Mickey who all live in one home cage and one other ferret, Slinky, who is a polecat ferret and lives in his own home cage.

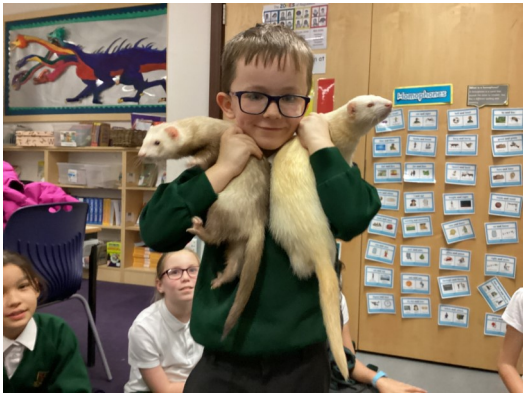
They are so much fun to play with, just yesterday the girl ferret jumped on my leg and we play fight - they really love to play. I know when they are unhappy or want to stop playing as they hiss - when they do this I know not to carry on.'

We asked Jaxon what he had to do to look after his ferrets. He was very honest to let us know that it was mummy who did most of this!

'We have to clean them out to make sure that their cage is clean and tidy for them to stay in and we have to make sure they have bedding, mummy uses baby blankets for this. We have to feed them as well.'

Mum let us know that they have a varied diet, which includes kitten food, special ferret biscuits as well as more unusual food such as fish (especially mackerel in sunflower oil), egg and even liver.

We would like to thank Jaxon for talking to us and for bringing in Luca and Mickey to the Pet Club.



Arlia Comes Slithering In

This Wednesday, it was the turn of Arlia, the Royal Python, to visit Year 6 Pet Club.

It was a real pleasure to meet the pet snake, who belongs to the Shafer family: Heidi, Scyld and Charlotte.

Mum, Amy, who is part of our Teaching Assistant team brought Arlia along after school to meet the club, run by colleague Louise Pearson.

Amy explained that Arlia was previously housed at the [National Centre for Reptile Welfare](#) based at Hadlow College. The family were amazed at the fantastic service offered by the NCRW: 'They look after the reptiles with them to such a high standard, and offered us as much help and assistance as we needed when we were choosing Arlia - they visited the house and are available for advice at any time. We would recommend anyone who is interested in homing a reptile or an amphibian to visit the centre first.'

Heidi was proud to show off her pet and told us that Arlia was very easy to look after as she is not always in need of feeding and she really does love to have a bath! 'We put Arlia into the bath and make sure she is soaked in the water - she loves this and it is really good for her as it helps her to shed her skin which happens four times a year.'

The children at Pet Club were extremely pleased to have the opportunity to hold and stroke the Royal Python with one commenting, 'it was amazing to be able have the snake around me and on my lap as they are animals that usually we are apprehensive about being near.'

Charlotte in Dragon Class had not stroked at held a snake before and described the feeling as, 'beautiful and smooth. I was worried at first, but as soon as I saw that everything was fine and that Arlia was calm, I became more comfortable and the smooth skin was lovely to touch.'



SLADE JOURNAL

AROUND SCHOOL



Slade: On Air

At the beginning of the week, we welcomed John Butt from West Kent Radio to Slade.

John was in school to carry out an interview with Ellie, Akshara and Charlotte all in Year 6 along with Mrs Ball. The interview was about our Coronation Throne, which John knows will be of interest to his listeners.

The girls were absolutely fantastic as they pre-recorded the chat, which will air on John's mid morning show next Monday morning.

They spoke about the competition that they entered, the process of preparing and designing the artwork and then the thrill and pride of winning and then seeing the throne brought to life at the Tower of London.

John was very impressed with the level of confidence in which the girls spoke during his session with them - as we are sure you will be as well.

To listen to Slade via the John Butt Radio Show on West Kent Radio tune in from 10:00 on Monday morning on 95.5 FM in Tonbridge, Hildenborough and the Weald, 106.7 in Tunbridge Wells and its satellite towns and along the A21 and 107.2 in Bidborough. You can also listen in the following ways:

ON YOUR SMART SPEAKER

To listen on your Amazon Alexa device start by saying, "**Alexa enable West Kent Radio Skill**" from then on you should be able to say "**Alexa Play West Kent Radio**".

For Google, simply say "**Play West Kent Radio**".

ON THE WEBSITE

Click the blue '**LISTEN LIVE**' button at the top of the page: <https://www.westkentradio.co.uk/player/>

LOCAL RADIO PLAYER

Download the Local Radio Player app from the Google Android or Apple iOS app store.

THE TUNE-IN APP

Search on the Tune-In app, for West Kent Radio.



95.5, 106.7 & 107.2 FM
ONLINE
ON YOUR SMART SPEAKER



Playtime Costumes

We would be very grateful if any child would be happy to donate any used dressing up costumes that they no longer play with at home. This is for our growing box of items available for the children to enjoy at break and lunchtime play - enabling them to have a happy and fun time out of the classroom devising their own games and acting out their dreams!

If you do have any costumes that are suitable for our children (ages 4-11) that you are happy to donate, please drop them in at anytime to the school office.



Arriving on Time at Yeti's

Thankyou very much to George in Elf Class and his family for their extremely kind donation of a train set for use in Yeti's Wraparound Provision Breakfast and After School Clubs.

The set has already proved to be a very popular addition to the variety of toys and activities available to the children who use Yeti's.



SLADE JOURNAL

CHRISTMAS IS COMING

Christmas Day at Slade: Friday 8 December



Slade PTA
PARENT TEACHER ASSOCIATION

CHRISTMAS SALE

FRIDAY 8TH DECEMBER

HO, HO HO!

BUY PRESENTS FOR YOUR GROWN-UPS AND SIBLINGS...
ALL PRESENTS ARE 50P

@ARCHFORDESIGN



NOURISH

CHRISTMAS MENU

Merry Christmas!

Roast Turkey with Festive Trimmings (1,6)

A Merry Roast Vegetable Loaf (VG)

Peas, Carrots, Brussel Sprouts & Roast Potatoes

Mr Nourish Festive Chocolate Cookie (1)

Christmas Pudding & Custard (1,6,7)

Fruit

Key: VG Vegan V Vegetarian

Dishes marked with any of the following numbers contain the matching allergen:
Allergen code: (1) Wheat Gluten (2) Crustaceans (3) Soybean (4) Mustard (5) Sesame (6) Sulphites/Sulphur Dioxide (7) Milk (8) Fish (9) Egg (10) Peanuts (11) Molluscs (12) Celeries/Celery (13) Nuts (14) Lupins (15) Oat Gluten (16) Barley Gluten

Putting on a Show: Christmas is Coming!

The EYFS and Key Stage 1 classes have been busy rehearsing their Christmas performances this week and are looking forward to putting on their shows in December.

Most ticket orders have now been made and we thank you for your quick booking of these. For anyone yet to secure seats at one of the shows, please use the appropriate form below:

EYFS Nativity: Tuesday 5 December (09:30) and Wednesday 6 December (14:00)

<https://forms.office.com/e/j8jaTRiG4m>

Year 1 Night Before Christmas: Tuesday 5 December (14:30) and Thursday 7 December (09:30)

<https://forms.office.com/e/A5W5Nwnb8Q>

Year 2 The Inn-spectors: Wednesday 6 December (09:30) and Thursday 7 December (14:30)

<https://forms.office.com/e/X5qznMS4cF>

The KS2 choirs are also very pleased to be performing at our own Carols by Candlelight concert to be held on Monday 11 December at the Parish Church of St Peter and St Paul in Tonbridge Town Centre and also at the Greater London Authority Trafalgar Square Carol event on Tuesday 12 September - look out for more information next week about spectating at these events.



SLADE JOURNAL

AROUND SCHOOL

Fergus the Mixed Up Frog

Last week in her regular column in the newsletter, Mrs Slade broke the news that our own Nicola Hill, class teacher in Sprite Class, is now a published author with her book, Fergus the Mixed Up Frog, now available to purchase via Amazon.

The book has been beautifully illustrated by Pip Clark, one of our Key Stage 1 Teaching Assistants.

Fergus the character has been used in school for over two years, aimed at being a friendly support to the Zones of Regulation emotions system we use at Slade to help the children regulate their feelings through the use of different coloured emotions - the aim to become green for calm and happy.

Nicola searched for a story that the children could use, but could not find anything on the marketplace that would be suitable for Early Years and Primary aged children to identify with.

Fergus started life as a series of powerpoints used in the classroom, and now he is available in full story format in his first book.

Nicola is naturally very proud of Fergus, who is characterised as a frog because normally, frogs are the 'optimal' colour of green.

In the story, Fergus is mixed up because he is lots of different colours, this is because he has mixed emotions; he is worried and nervous which in turn makes him feel angry with the situation. Fergus does not like to feel angry, and as a result, he becomes sad and upset. Thanks to his brother, Bob, he starts to regulate his feelings with pleasing results.

The emotions of Fergus and Bob are lovingly brought to life by Pip, who illustrates the story and has done so since the beginning when pictures were put to the words - Pip loves the story and has seen the benefits of the Zones to the children and so was inspired to illustrate.

The children at Slade all use the Zones of Regulation and are acutely familiar with the colours and their meanings - some may already use a colour to explain how they are feeling at home. The book is a perfect way to complement this learning, and would make a wonderful present for a birthday or as a stocking filler at Christmas.

It is available and in stock via Amazon. Just use the link below to view and purchase for £7.99

https://www.amazon.co.uk/Fergus-Mixed-Frog-Nicola-Hill/dp/BoCNFWMYBK/ref=sr_1_1?keywords=fergus+the+mixed+up+frog&qid=1700580969&sr=8-1

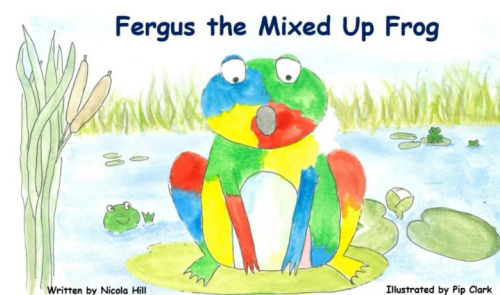
Book Signing at Slade

As a special treat, Nicola and Pip will be signing copies of the book next Friday in the playground after school from 15:20. If you are in possession of your own copy from Amazon, bring it along on Friday after school and Nicky and Pip will be pleased to sign it for you. They will have a small number of books for sale on the day for £10.00 which will include a £2 donation to the school library.

We look forward to seeing you at this very special event.

To find out more about Zones of Regulation, how the colours work and the key vocabulary, visit the website: <https://zonesofregulation.com/>

Zones of Creation Founder and Creator Leah Kuypers



SLADE JOURNAL

SPORT, FITNESS AND WELLBEING

Tonbridge Premiership

Slade Primary School have entered three teams in to the local school football league run by the Tonbridge and Malling Schools District FA.

The two boys teams Slade United (Year 6) and Slade Rovers (Year 5) are both playing in the Tonbridge Premiership. Their season kicked off last Friday evening with the Slade Derby: United vs Rovers.

Slade United 0 : 4 Slade Rovers

It was a convincing victory for the Year 5 team on Friday evening as the wet and sticky pitch as the conditions clearly favoured the Rovers team.

Despite the scoreline, the Player of the Match was United goalkeeper Tim, who had an outstanding game. Rovers were inspired to victory with strong performances from Hayden, Daniel and Dominic.

The Slade United team were straight back into action on Wednesday night as they travelled to Hildenborough Recreation Ground to play Hildenborough Primary School.

Hildenborough 4 : 0 Slade United

It was another difficult evening for the United boys as they went down by 4:0 again. It was however, fantastic to see the return of Lewis to the team and we look forward to him playing an important part in the fixtures to come. Star players included those performances from Xzander, Yurraj and Tim who were strong throughout the 40 minute match. It was a much improved performance from all of the boys and it was an incredibly tight game until the final few minutes when Hildenborough showed extra fitness to score three late goals.

Upcoming Fixtures

Thursday 4 January - Slade Rovers v Hildenborough - Tonbridge Premiership

Thursday 4 January - Slade Girls v St Margaret Clitheroe - Tonbridge Girls Premiership

Squads

Slade United: Michael Tim , Lawrence , Tolu , Lewis , Yuvraj, George, Xzander, Laith

Slade Rovers: Lenny, Jack, Robert, Milo, Jack, Jack, Hayden, Dominic, Daniel, Harrison, Harvey

Slade Girls: Lily, Sophie, Olivia, Harriet, Victoria, Keeva, Malvina, Stella



CHEERLEADING CLUB

Opening Night

Join us for our Opening Night to launch the brand new cheerleading club coming to The Leigh Academy, Tonbridge starting up on 17th January 2024. Head to the Trinity Dance Eventbrite page to register your child's place and come along for a go!

FREE WEDNESDAY 10TH JANUARY 2024

- ✔ Free to attend, just register your place!
- ✔ All abilities welcome, boys and girls
- ✔ Learn stunts, motions, tumbling, jumps and more
- ✔ Friendly and relaxed environment
- ✔ A free gift to take away
- ✔ An opportunity to try the club before starting

TRINITY STARS 4-8 years old 4.30 - 5.30 PM	TRINITY ROCKETS 9-12 years old 5.30 - 6.30 PM
---	--

SPORTS HALL AT THE LEIGH ACADEMY, TONBRIDGE
 Brook Street, Tonbridge TN9 2PH

REGISTRATION LINK

bit.ly/trinitydance-cheerleadingclub

CONTACT FOR MORE INFORMATION

Head Coach - Lauren
lauren@trinitydance.co.uk or @_TrinityDance_

See other side for details on joining the club

Cheerleading with Trinity

Following the success of our Slade Cheerleading training and competitions last year, coach Lauren Merish has started up a Cheerleading Club for between 4 and 12 years old through her Trinity Dance company.

Lauren is holding a free opening night taster session to celebrate the launch of the club on Wednesday 10 January at Leigh Academy in Brook Street, TN9 2PH.

Book your place for the launch night fun via this link:
<https://www.eventbrite.co.uk/e/trinity-dance-cheerleading-club-opening-night-10th-january-2024-tickets-740015906497>

TRINITY STARS (4-8 yrs old)
 Wednesday's 4.30 - 5.30 PM
 A fun, recreational class introducing athletes to the fundamentals of cheerleading. Suitable for all abilities.

BOOK NOW!

TRINITY ROCKETS (9-12 yrs old)
 Wednesday's 5.30 - 6.30 PM
 An exciting recreational class coaching athletes in cheerleading stunts, tumbling, dance and jumps. Suitable for all abilities.

BOOK NOW!

✔ Qualified coach
✔ Fully insured club
✔ DBS checked
✔ First aid trained
✔ Safeguarding trained

FIRST SESSION 17TH JANUARY 24
 Ongoing during the school term

THE LEIGH ACADEMY TONBRIDGE
 Brook Street, Tonbridge Kent TN9 2PH

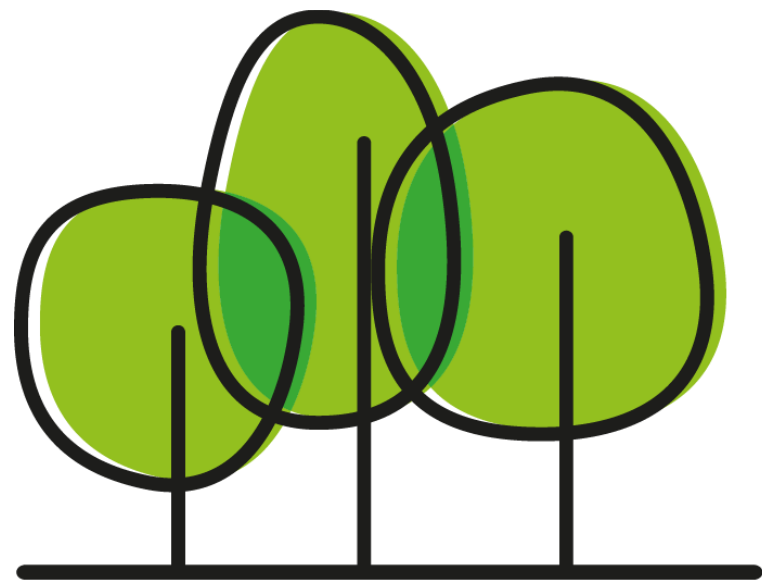
£6.00 PER SESSION
 Payments made as block bookings for each term

REGISTER NOW!

Places will be limited so book your place now by emailing Lauren on lauren@trinitydance.co.uk to receive an eventbrite registration form @_TrinityDance_

SLADE JOURNAL

FOREST SCHOOL



Forest School Parent Volunteers

Thankyou to all of you who have already contacted us about this opportunity, we are very grateful for your support. We are still on the look out for anyone else who would like to join the team of parent volunteers to support our Forest School Leader Miss Hall, assisting in the provision of a safe, caring, stimulating, and enriching environment for all Forest School participants. Forest School enables children to have positive, hands-on experiences in the outdoors, connecting with, and learning about the natural world. The sessions also help improve mental well-being - developing self-esteem, boosting confidence, and building resilience.

Why should I consider becoming a volunteer for Slade Forest School?

Make a difference in the lives of the children, helping them feel a sense of wonder and curiosity about the world around them.

Help to provide unique opportunities, supporting holistic development and learning through fun experiences in our woodland setting.

Help the children feel good about themselves, boost self-esteem, confidence and develop practical skills.

Experience your own increased well-being and improved physical and mental health through interaction with nature.

Observing and contributing to the increased well-being of those interacting with Forest School.

Try new things and develop your own skills in native plants, making and using tools, fire lighting amongst many others.

What will I be doing?

Help with forest school, natural outdoor play, craft activities.

Help with upkeep of tools and equipment.

Help with supervision of children.

Help set up and tidy up after activities.

Encourage a respect for nature.

Model weather positivity.

This role is subject to all the usual DBS checks and volunteer inductions, if you feel this is something you could support with, please contact Forest School Leader, Tina Hall via thall@slade.kent.sch.uk stating which day of the week you would be able to help and whether this is morning or afternoon.

Sessions run from 9 till 12:30 in the morning and 13:00 until 15:30 in the afternoon. We are hoping to have enough volunteers to have a rolling programme of support so it may be that you are not required every week

(due to timetabling needs we cannot guarantee that you will be supporting your child's class).



SLADE STATS

ATTENDANCE

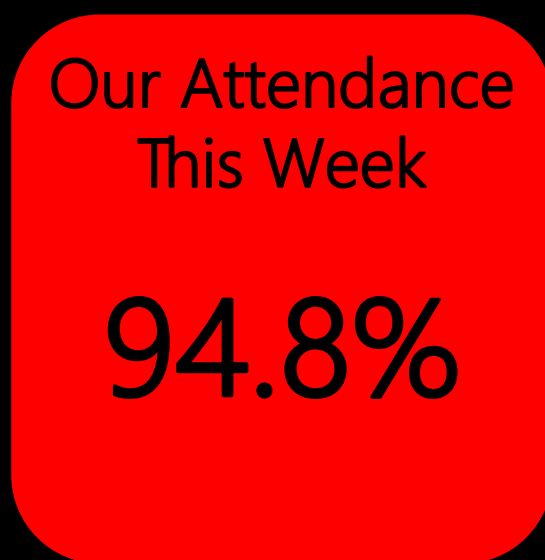
Over a school year, we are due to be open for 190 days which equates to 380 sessions.

Registration takes place at 08:50 in the morning and after lunch in the afternoon.

Attendance is affected if a pupil is not present at school for any whole session including registration.

The class with the best attendance each week will win Attendance Ted.

Winners are announced via our X (formerly Twitter) feed @sladeprimarysch



Attendance percentage this year to date by yeargroup:

EYFS	95.5%	Year 2	97.6%	Year 5	96.8%
Year 1	95.0%	Year 3	95.8%	Year 6	94.8%
		Year 4	96.7%		

SLADE STATS

PUNCTUALITY

Registers are taken at 08:50.

It is important that the children are at school on time every day to prevent disruption and upset to their day and for the rest of their class.

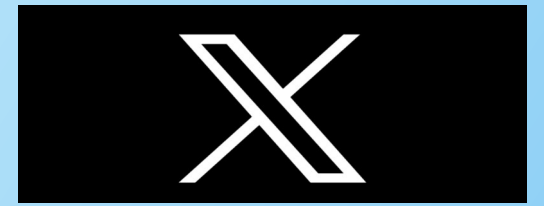
Punctuality Pup is awarded to the class with the best punctuality each week.

Winners are announced via our X (formerly Twitter) feed @sladeprimarysch



SLADE ON X

X-POSTS (Formerly Twitter)



We encourage you to follow us on the social media platform X, formerly known as Twitter.

We post a daily diary Today at Slade at 07:15 each morning as well as reminders, useful information, live updates from school and other community events of interest.

Date of Post	Subject
Monday 20 November	Today at Slade
Monday 20 November	Akshara, Ellie and Charlotte On Air
Monday 20 November	Monday Mooch: EYFS
Monday 20 November	Monday Mooch: Year 1
Monday 20 November	Monday Mooch: Year 2
Monday 20 November	Monday Mooch: Year 3
Monday 20 November	Monday Mooch: Year 4
Monday 20 November	Monday Mooch: Year 5
Monday 20 November	Monday Mooch: Year 6
Tuesday 21 November	Today at Slade+ Flu Vaccination Reminder
Wednesday 22 November	Today at Slade
Thursday 23 November	Today at Slade
Thursday 23 November	Year 6 Pet Club
Thursday 23 November	Arlia
Friday 24 November	Today at Slade
Friday 24 November	Today at Slade
Friday 24 November	Nationwide Visit to Year 6



SLADE+

YOUR WAYS TO PAY

We have tried to make paying for special lessons, wraparound provision, school trips and visits amongst other events that happen through the year as easy as possible. Please see our handy guide here on the current prices and 'Way to Pay' when required.

We always make sure that all trips and special events are priced as fairly as possible but are acutely aware that extra costs can be tricky for our families. If you would like to discuss payment options for any extra spend at Slade, please contact us at anytime and confidentially via office@slade.kent.sch.uk.

School Dinners

School Dinners provided by Nourish Contract Catering are free to the following groups: EYFS Classes, Year 1 Classes, Year 2 Classes, EYFS, KS1 AND KS2 pupils eligible for benefits related Free School Meals

School Dinners provided to KS2 (Year 3-6) children are charged at £2.40 per meal.

Credit should be loaded onto the Meals section of your Arbor account.

Yeti's Wraparound Provision (Breakfast and After School Clubs)

Breakfast Club is charged at £4.20 per session

After School Club is charged at different pricepoints:

Until 16:30: £4.20 // Until 17:30: £8.60

If your child participates in an after school activity, please let us know via yetis@slade.kent.sch.uk and we charge only for the 16:30 - 17:30 time at £ 4.40.

Payment should be made via your online SCOPAY account. Please email yetis@slade.kent.sch.uk if you require a login to SCOPAY.

School Trips and other Special Events

You will be notified of the dates and costs of school trips or special events by email.

Payment and consent will be made via the Trips section of your Arbor account.

Paid For, Independent Clubs and Activities

Slade does not take payment for independently run clubs. All payment and correspondence should be directed to the club organiser.

Swimming Lessons

6 Swimming lessons are taken by all KS2 classes at a cost of £17.00.

Payment and consent will be made via the Trips section of your Arbor account once you have been advised of the dates of the sessions.

SLADE+

EXTRA CURRICULAR CLUBS NEXT WEEK

Monday

Year 1-4 French

KS2 Football

Year 4-6 Netball

KS2 Drama & Musical Theatre

EYFS & KS1 Multi Skills

KS1 and KS2 BSL

Tuesday

Year 3 and 4 Choir

KS1/KS2 Street Dance

KS2 Cricket

Sewing

Wednesday

Year 4 -6 Choir

Year 2/3 Gym

Year 6 Pets

KS1 and KS2 Athletics

KS1 and KS2 Art

Thursday

Year 5 & 6 Signing

Choir

Year 4-6 Dance

KS2 Sports

Friday

Year 5 and 6 Sports

EYFS, KS1 & KS2

Karate

[Full Details: Times, Prices, Ways to Book and more via the school website](#)

Free Clubs run by staff at Slade with spaces

Free Clubs run by staff at Slade Currently Full

Paid Clubs: Contact Organiser for full details