

SLADE

PRIMARY SCHOOL



Inside this Issue:

- 02: From the Headteacher
- 03: For your Diary
- 04: Around School
- 05: In Our Community
- 06: Maidstone Music Festival
- 07: Kent County Council Update
- 08: Sport, Fitness and Wellbeing
- 09: Our Communication to You
- 10: Slade Stats
- 11: Slade on X
- 12: Slade+

School Newsletter Term 2 Issue 5

Friday 1 December 2023

KAREN SLADE

FROM THE HEADTEACHER

Dear Parents and Carers,

It’s beginning to look and sound a lot like Christmas!

Rehearsals for all of our traditional events and performances are now well underway, with the sound of Christmas music and song echoing throughout the school. It is all feeling very festive! A reminder that a full breakdown of all our Christmas activities including dates, timings and booking details for performances was shared with you at the start of this term so please do revisit it to make sure that you have those all-important dates in your diary. Thank you to our Class Reps for being on hand to answer any Christmas queries on the class WhatsApp groups, with daily updates also shared on our ‘X’ feed too for anyone worried that they may have missed something! We are all very excited to be sharing our Christmas celebrations with friends and families of Slade in the coming days!

Still on the theme of Christmas and as we approach the end of term and the holiday season, we’re all too aware of the heightened financial pressures that many continue to face at the moment. As such, we really once again want to emphasise that our staff never expect to receive any Christmas gifts from pupils and no parent should ever feel that they have to buy a present or contribute towards a collection for any member of staff. Any gifts are always very much appreciated and greatly received but nothing beats a home-made Christmas card with a few kind words inside; they are the gestures that really do mean a lot!

Today, your child will be bringing home some of their work to share with you over the weekend! Books will be brought home at the end of the day and are to be returned to school on **Monday 4 December**. This is an opportunity for you to talk to your child about their work and the learning that has taken place whilst also celebrating their achievements during the term. We ask that all books and folders be returned to school on Monday in order for the children to be able to use them in class during the week!

In addition to returning your child’s exercise books on Monday, we also ask that every child has their reading book and folder in school too. It is really important that all of the children have their book in school every day in order that they can be heard read by an adult at any available opportunity across the week. It might be that your child is asked to read on any day, not just library day, so thank you for helping ensure that they are ready and prepared for this and have their book in school with them.

Yesterday we said goodbye to Mrs. Jayshree Anand, who has been working here at Slade as a Midday Supervisor most recently in Gruffalo Class, for the last two years. Jayshree has successfully been appointed to the role of Teaching Assistant at St Matthew’s School in Tunbridge Wells. Congratulations and well-done Jayshree on your new appointment. We are currently recruiting to this role, with all job details of the MDS position and application details available on the Kent Teach website should you or anyone you know be interested.

Finally, a reminder that at the end of the day today on the playground there is a ‘Fergus the Frog’ book sale and signing with the author and illustrator, with copies available to buy. See you there!

Have a lovely weekend everyone.

Karen Slade



DIARY DATES

NEXT WEEK AT SLADE

Next Week:

Day	Event
Monday 4 December	
Tuesday 5 December	09:30 - EYFS Christmas Show 14:00 - Year 1 Christmas Show
Wednesday 6 December	Invicta Maths Challenge - Competitors Aware of Details 09:30 - Year 2 Christmas Show 14:00 - EYFS Christmas Show
Thursday 7 December	09:30 - Year 1 Christmas Show 14:00 - Year 2 Christmas Show
Friday 8 December	Christmas Day at Slade Including Christmas Jumper Day, PTA Children’s Market, Nourish Christmas Meal See Page 4, previous emails and information from Class Reps

Forest School and Swimming Next Week:

MONDAY	
TUESDAY	Wyvern Class Forest School Dragon Class Swimming
WEDNESDAY	Hydra Class Forest School
THURSDAY	Dragon Class Forest School Griffin Class Swimming
FRIDAY	

Further Ahead:

Monday 11 December

NHS FLU IMMUNISATION CLINIC

EYFS - Year 6

All Day

Monday 11 December

CAROLS BY CANDLELIGHT

St Peter and St Paul’s Church,
Tonbridge

18:30

See Page 4

Tuesday 12 December

GLA CAROL SINGING CONCERT

KS2 CHOIRS

Trafalgar Square, London

Details known to signed up Choir
Members

SLADE JOURNAL

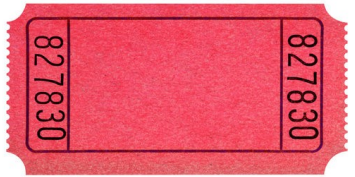
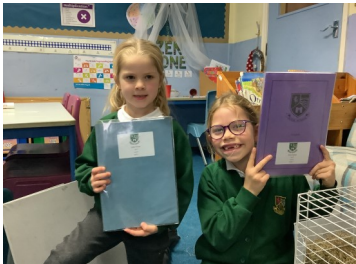
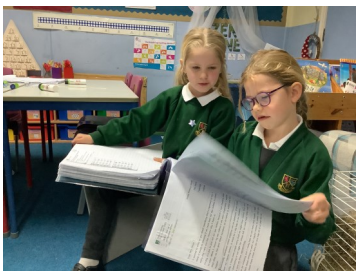
AROUND SCHOOL

Books Home Tonight

It is always with pride that our children bring their books home for parents and carers to look at during the year.

They have brought some of their books home with them today for you to look at over the weekend, we hope you enjoy seeing what they have been up to and discussing the learning with them.

Please remember to pack the books back up and return them on Monday for the start of school.



Christmas Festival at Slade

We are all looking forward to next week’s Christmas fun at Slade which includes the EYFS and KS1 classes ‘Putting on a Show’ for their families on Tuesday, Wednesday and Thursday. Parents who have booked tickets for the shows should arrive at the Main Playground Gate, no more than 10 minutes before the scheduled start times of either 09:30 or 14:00.

Next Friday is Christmas Celebration Day at school. The festival will start shortly after 9, when the children will visit the PTA Market. They will be choosing small gifts for family and friends. Please send the children to school with a named bag to carry their purchases home in, as well as loose change of between £3 and £5, secure in a named purse, wallet or money bag.

Friday 8 December is also Christmas Jumper day. Children are encouraged to wear a Christmas jumper or sweatshirt over their school uniform for the day.

The final celebration next Friday is the Nourish Christmas Meal.

Children will have the choice of a meat or vegetarian meal, which where applicable should be paid for in advance via your Arbor account (Costing £2.45 to all KS2 pupils not eligible for Benefits Related Free School Meals).

Christmas at Slade continues in to the final week of term with our traditional Carols by Candlelight concert, held in the parish church of St Peter and St Paul. The concert contains musical pieces by our children who are learning to play an instrument, carols and other songs by the Year 4-6 Choir run by Mrs Stephens as well as readings and continuity from some of our Year 6 children.

This is an all ticket event which begins at 18:30 at the Parish Church on Monday 11 December. To secure your ticket, please complete this one minute form:

<https://forms.office.com/e/us1ptqvHpA>

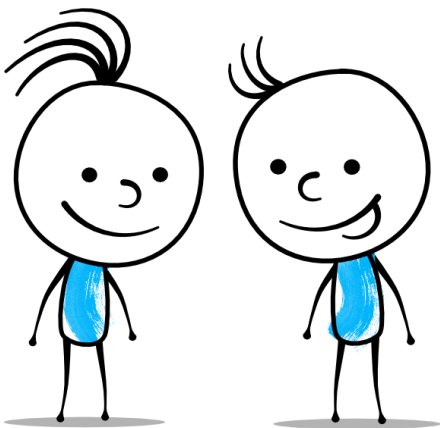
The final part of the Christmas Festival are our class parties. These take place on the afternoon of Wednesday 13 December. Parents do not need to do anything for these parties as the food and entertainment is provided by the school.

NHS Lancaster Model

Our Year 6 classes were pleased to have had a visit from Denise and Shannon from Kent School Health on Thursday as they took part in the Lancaster Model health questionnaire. The questions, which are provided in confidence via individual laptop computers cover a range of medical and mental health questions as well as examining the children’s worries and fears.

For more on the model which is delivered to schools nationwide: [Parents and Guardians – The Lancaster Model](#)

If you have any questions about the delivery in school, please contact your class teacher via the class email address.



SLADE JOURNAL

IN OUR COMMUNITY



Upper Castle Fields Parking Plans

Tonbridge and Malling Council have issued plans to extend the Upper Castle Fields Car Park, situated opposite the school. We know that many families use the pathways in and around this space so there would be an impact on the Slade community.

The council are consulting residents, visitors and anyone with an interest in the plans.

To inform that consultation, they have prepared a questionnaire for completion where respondents can support or reject the proposals and give further information or opinion. We encourage all parents, carers and friends of the school to take a look at the plans and to add their views via the consultation questionnaire.

The description of the plans as laid out on the Tonbridge and Malling Council website are:

Extension to Tonbridge – Upper Castle Field car park

The Upper Castle Field Car Park is the most successful car park run by TMBC in terms of income generation and occupancy. It is often full and has become increasingly popular with the growth of events at the Castle. It is proposed an extension to the Upper Castle Field, with the intention to create an additional 28 parking spaces (depending on design) to better meet the demand in the area.

The following link shows a drawing of the proposals: <https://www.tmbc.gov.uk/downloads/file/3398/initial-proposed-car-park-extension-for-upper-castle-field-tonbridge>

The questionnaire can be completed here: [Consultation Questionnaire](#)

In addition to this, Tonbridge and Malling Council are also planning on slight adjustments in the Castle Grounds Parking area; they state:

Additional pay & display bays in Tonbridge – Castle Grounds car park

Kent County Council is withdrawing from the Gateway at Tonbridge Castle next year, and last year we consulted on ideas for its replacement it is therefore proposed that the nine Gateway Visitor parking spaces at the Castle be changed to Pay and Display parking similar to the other parking spaces in the Castle Grounds. There is also confusion by some drivers as to why there are different restrictions in place, and the existing Gateway parking arrangements are regularly abused.

For full details of all off street parking consultations currently active via , visit: <https://www.tmbc.gov.uk/policy/off-street-parking-consultation>

Filling the Poppy Purse

Terry Mason, from the Poppy Appeal Tonbridge, contacted us this week to say thankyou to all of the children at Slade for their generosity during the recent fundraising sales of traditional poppies, wristbands, rulers and other merchandise.

He was pleased to say that the Slade collection totalled £ 652.91; part of a total collected across Tonbridge of £30,147.13.



SLADE JOURNAL

OUR NEWS

Arthur’s Perfect Piano

We are thrilled to be able to bring you Arthur’s news. Fresh from performing at charity fundraising event, Maidstone Music Festival 2023, Arthur, from Hippogriff Class, and dad, Dan spoke with the newsletter to let us know what a wonderful day it had been and how proud the whole family are of his achievements since beginning to learn to play the piano.

We let Dan take up the story:

‘This past Sunday, Arthur took part in the Maidstone Music Festival 2023, a charity fundraiser.

He performed two Grade 4 pieces for his first performance:

Mouvement de valse
Ninette’s Musette

As part of his performance he had to present his pieces of music to the adjudicator then present himself to the audience before taking his position at the piano.

When it comes to performance etiquette, there are a number of steps to remember. Arthur stood out in his performance by adhering to each step. After his performance, along with the other performers in his recital, he received feedback and warm hearted guidance from the adjudicator.

Following this performance, Arthur later went onto play a second performance, playing another Grade 4 piece: Billie’s Song. Again he performed confidently and really enjoyed himself. With further constructive feedback, he gained valuable insights into his piano performance.

This was a very positive experience for Arthur as it was a key moment in learning what can happen with dedication and self confidence. Arthur had been attending piano lessons for little over 2 years now and has rarely missed a day of practice since starting.

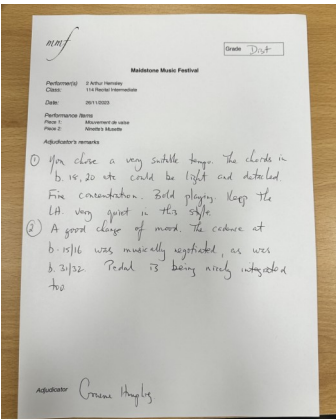
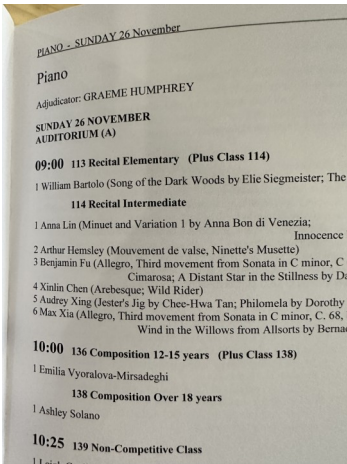
By taking part in the music festival, he was awarded his Grade 4 and now aiming for his Grade 5. ‘

Arthur spoke to us this morning as he recounted how he felt performing in front of adjudicators and an audience, ‘I was very happy to be performing and more so when I knew that I had gained my Grade 4 certificate. The most nervous part was when I had to stand in front of them and introduce myself - although I think I did it well.’

‘My favourite pieces are Billie’s Song and Ninette’s Musette and I was pleased to play them at the festival. I have been waiting for this moment for the two years that I have been playing and I am pleased to have performed and the fact that both myself and my mum and little sister both also play the piano.’

The Maidstone Music Festival is an annual event in the County Town and this year was hosted at the home of our friends at Invicta Grammar School with over 400 young performers playing different instruments and singing in a friendly competition. The adjudicators are all vastly experienced musicians who are able to provide constructive advice on everything that went well and the ‘even better if’s’ which the performers all take on board and use in their next performance.

Congratulations to Arthur and thankyou very much for sharing your wonderful news with us.



SLADE JOURNAL

FROM KENT COUNTY COUNCIL

Severe Snow and Ice Plan 2023/24

Every winter brings the possibility of snow and ice. Extreme bad weather can cause widespread and prolonged disruption. Schools are often affected and it can be difficult to maintain an education service.

We support Kent County Council's fundamental principle that every effort must be made to keep schools open, even if only limited numbers of pupils can attend. However, schools may close due to 'unavoidable' circumstances. Those circumstances being that it is no longer safe for staff or pupils to be onsite.

We recognise that it is important our school remains open so parents are able to work and pupils can continue to learn.

Slade Primary School will make every effort to prepare for severe snow and ice this winter by preparations such as gritting pathways, clearing access points etc.

How will we let you know if the school is closed?

If we do experience severe snow and/or ice resulting in hazardous conditions, we may have to take the decision to close the school. Once this decision has been made we will notify parents and carers via email, on our X feed and on the school website as well as Kent Closures website.

What can you do to help?

- Please visit <https://www.kent.gov.uk/roads-and-travel/what-we-look-after/winter-service> for more information about gritting routes and travel issues around Kent so you can plan your journey.
- When driving students to or from school, please avoid parking along the street or opposite the main entrance alongside Castle Fields. We would appreciate you parking in the designated car parks at Upper and Lower Castle Fields to avoid unnecessary congestion.
- Please provide a packed lunch from home in case school meals cannot be provided.
- Don't forget suitable warm clothing - gloves, hats, scarves, wellies etc or even a change of clothing.
- If you are a working parent or carer, or feel you may find having a short notice closure tricky, please have a back-up plan in place with another family member, friend or other parent or carer. This will allow all children and staff to leave earlier for their safety if weather dictates.

Many thanks for your support in helping Slade remain open during periods of severe snow and ice.

Useful Websites and Socials

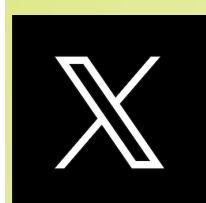
Register for Kent County Council School Closures : <https://www.kentclosures.co.uk/>

Local Road Closures, Roadworks and Incidents: <https://www.kenttraffic.info/>

Winter driving advice plus the latest motorway and A road conditions : <https://nationalhighways.co.uk/>

Latest on scheduled bus services from Arriva: <https://www.arrivabus.co.uk/kent-and-surrey>

Latest on scheduled bus services from NuVenture: <https://www.nu-venture.online/>



Southeastern Railway: [@Se_Railway](#)

Kent County Council: [@Kent_cc](#)

Slade Primary School: [@SladePrimarySch](#)



SLADE JOURNAL

SPORT, FITNESS AND WELLBEING

Tonbridge Schools Basketball

We were back on the basketball court this week as two teams travelled the short distance to Leigh Academy Tonbridge for the Tonbridge Schools Tournament.

The teams have not had a lot of opportunities to practise their skills, but still managed to play well throughout the multi-school tournament, eventually won by Speldhurst Primary.

Mrs Ball was particularly impressed by the attitude of the team, especially when they were all being substituted in and out of the games.



Team Building at The Angel Centre

A fantastic time was had by all on Wednesday at The Angel Centre as the Leigh Academy Partnership hosted a Team Building Festival.

The festival encouraged the 100 children in attendance from 10 local schools to challenge themselves to work together to fix problems, achieve goals and have fun as a team.

Faith explained, ‘To be successful, we needed to keep focused, talk to each other and also to listen to each other.’

‘We needed to be at our best as we did the challenges.’

And the Slade team certainly were! There was a large selection of tasks to complete throughout the morning including the Fishing Game where you needed to fish for items using sports equipment including hockey sticks, hula hoops and skipping ropes.

The next game was Tarpaulin. The team had to hold a tarpaulin with cut holes in it - and then make sure the bouncing football did not fall through the holes, or go overboard over the sides.

There were other challenges for example, the Hula Hoop Game, where you had to try to spin 5 hula hoops along your arm and, more difficultly, balanced on your finger tip.

One of the best games was Cup Stacking. But, better! Faith continued, ‘This wasn’t just like normal staking, you had to work with a partner and using an elastic band manage to pick up the cup and stack it on top of the last.’

Elephant was a game where everyone lined up and held hands through their legs, before passing the disc through the chain.

Faith’s favourite was T-Man. A team member was asked to stand in the shape of a T with their arms held out and legs together. Then, their teammates had to hang, balance and dangle all sorts of sports equipment on them - to see how many different items they could manage before having to let their arms down.

Remember; all of our team line-ups are included on our X-Feed at the event.



DEAR PARENTS AND CARERS

ARBOR EMAILS SENT THIS WEEK

Please take the time to read emails sent to you, we try to make sure that everything you are sent relates to your child, so nothing is irrelevant. If you would like further information on any email we send, please contact the class teacher or the school office for assistance.

Date of Communication	Subject	Sent To
Monday 27 November	Pegasus Forest School Highlights	Pegasus Class Parents
Wednesday 29 November	Christmas Jumpers	Year 1 Parents

HERE TO HELP

HOW TO CONTACT US

We are always keen to hear from you if you have a positive, negative comment to make about anything going on at school, or if you have a question or need clarification on anything we have sent or said.

We have a number of ways for you to reach out to us; please see the guide below to see where you should direct your question or comments in the first instance in order to make sure we are able to answer you as quickly as possible.

My child’s class learning , class activities, lessons, homework	Your child’s class email address: <i>classname@slade.kent.sch.uk</i>
Wellbeing or pastoral support	
Concerns about bullying and behaviour	
Absence and Sickness, School Trips, Payments, School Events	office@slade.kent.sch.uk
Special Educational Needs (SEND)	
General Enquiries	
Admissions	admissions@slade.kent.sch.uk
Yeti’s Wraparound	General queries: and Childcare Voucher payments: yetis@slade.kent.sch.uk Late Collections: 01732 377760
School Lunches, Nourish Contract Catering	teresa@nourishcontractcatering.co.uk
Slade PTA	sladepta@yahoo.co.uk
The Governing Body and Chair of Governors	governors@slade.kent.sch.uk
Complaints	slaws@slade.kent.sch.uk
GDPR Information and Reporting	eugdpr@slade.kent.sch.uk or slaws@slade.kent.sch.uk

SLADE STATS

ATTENDANCE

Over a school year, we are due to be open for 190 days which equates to 380 sessions.
Registration takes place at 08:50 in the morning and after lunch in the afternoon.
Attendance is affected if a pupil is not present at school for any whole session including registration.

The class with the best attendance each week will win Attendance Ted.
Winners are announced via our X (formerly Twitter) feed @sladeprimarysch

Our Attendance Target

97.0%

Our Attendance This Week

93.8%

Our Attendance This Year

95.6%

Attendance percentage this year to date by yeargroup:

EYFS	95.5%	Year 2	97.6%	Year 5	96.8%
Year 1	95.0%	Year 3	95.8%	Year 6	94.8%
		Year 4	96.7%		

SLADE STATS

PUNCTUALITY

Registers are taken at 08:50.
It is important that the children are at school on time every day to prevent disruption and upset to their day and for the rest of their class.

Punctuality Pup is awarded to the class with the best punctuality each week.
Winners are announced via our X (formerly Twitter) feed @sladeprimarysch

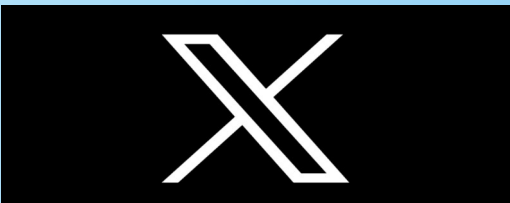
Pupils Late This Week

50*

**This total includes those 31 children late due to an exceptional incident on Wednesday morning.*

SLADE ON X

X-POSTS (Formerly Twitter)



We encourage you to follow us on the social media platform X, formerly known as Twitter.

We post a daily diary Today at Slade at 07:15 each morning as well as reminders, useful information, live updates from school and other community events of interest.

Date of Post	Subject
Saturday 25 November	Cheerleading Club
Sunday 26 November	Fergus the Mixed Up Frog
Monday 27 November	Today at Slade + West Kent Radio
Monday 27 November	Yeti’s Booking Window
Tuesday 28 November	Today at Slade
Tuesday 28 November	Basketball Squad
Wednesday 29 November	Today at Slade
Wednesday 29 November	Team Building Team
Wednesday 29 November	Team Building Action
Wednesday 29 November	Hydra Class Cooking at Tonbridge School
Thursday 30 November	Today at Slade
Friday 1 December	Today at Slade
Friday 1 December	Celebration Assembly
Friday 1 December	Fergus’ Book Signing at Slade!

Slade Primary School

@SladePrimarySch · 39m

SLADE BOOK SIGNING

After school today in the playground, Nicola Hill & Pip Clark, author & illustrator of Fergus the Mixed Up Frog, will be selling & signing copies of their story using Zones of Regulation.

Already bought a copy? Just bring it along to be signed as well!

4

Slade Primary School

@SladePrimarySch · Nov 29

Thankyou to everyone @TonbridgeUK for hosting us today and for sharing your kitchen facilities as Mr Duffin's class made a mixed vegetable soup.

The children prepared the vegetables, made and ate the soup, before washing up and evaluating their efforts!

1

3

288

Slade Primary School

@SladePrimarySch · Nov 29

We have been having such a good time tackling the different challenges at today's Team Building event.

Thankyou to @tmactiveleisure for hosting, @TWKSSP for organising and to Mrs Ball, Mrs Horsman and Mrs Zuber for your support all morning.

2

110

Slade Primary School

@SladePrimarySch

Congratulations to our Pupils of the Week, each of who beamed with pride when Mrs Slade read out their names earlier:

1

2

3

4

5

6

Oliver & Alisha

Margot & Owen

Frankie & Imogen

Nick & Jacob

Albert & Abel

Hayden & Venika

Victoria & Amelia

1:27 PM · Dec 1, 2023 · 173 Views

Slade Primary School

@SladePrimarySch

Good luck to everyone taking part in the @TWKSSP Team Building event at @tmactiveleisure Angel Centre.

Our team, accompanied by Mrs Ball today is:

Faith

Charlotte

Damen

Abel

Isaac

Albert

Charlotte

Alisha

Vinisha

Ann Riya

Ritaj

Have lots of fun!

Slade Primary School

@SladePrimarySch

Good luck to everyone taking part to this evening's @TWKSSP Basketball competition, especially our teams:

Sophie

Olivia

Harriet

Victoria

Malvina

Winnie

Jack

Robert

Milo

Hayden

Laith

Alex

Olawatobi

Leo

Thanks to everyone at Leigh Academy Tonbridge, who are tonight's hosts.

Slade Primary School

@SladePrimarySch · 1h

Attendance Ted is back in Hydra Class, with a very pleased Mr Duffin.

Punctuality Pup has remained in Elmer Class. Well done to our youngest learners for being here on time, every day!

SLADE+

YOUR WAYS TO PAY

We have tried to make paying for special lessons, wraparound provision, school trips and visits amongst other events that happen through the year as easy as possible. Please see our handy guide here on the current prices and ‘Way to Pay’ when required.

We always make sure that all trips and special events are priced as fairly as possible but are acutely aware that extra costs can be tricky for our families. If you would like to discuss payment options for any extra spend at Slade, please contact us at anytime and confidentially via office@slade.kent.sch.uk.

School Dinners

School Dinners provided by Nourish Contract Catering are free to the following groups:
EYFS Classes, Year 1 Classes, Year 2 Classes, EYFS, KS1 AND KS2 pupils eligible for benefits related Free School Meals

School Dinners provided to KS2 (Year 3-6) children are charged at £2.40 per meal.
Credit should be loaded onto the Meals section of your Arbor account.

Yeti’s Wraparound Provision (Breakfast and After School Clubs)

Breakfast Club is charged at £4.20 per session

After School Club is charged at different pricepoints:

Until 16:30: £4.20 // Until 17:30: £8.60

If your child participates in an after school activity, please let us know via yetis@slade.kent.sch.uk and we charge only for the 16:30 - 17:30 time at £ 4.40.

Payment should be made via your online SCOPAY account. Please email yetis@slade.kent.sch.uk if you require a login to SCOPAY.

School Trips and other Special Events

You will be notified of the dates and costs of school trips or special events by email.

Payment and consent will be made via the Trips section of your Arbor account.

Paid For, Independent Clubs and Activities

Slade does not take payment for independently run clubs. All payment and correspondence should be directed to the club organiser.

Swimming Lessons

6 Swimming lessons are taken by all KS2 classes at a cost of £17.00.

Payment and consent will be made via the Trips section of your Arbor account once you have been advised of the dates of the sessions.

SLADE+

EXTRA CURRICULAR CLUBS NEXT WEEK

Monday

Year 1-4 French

KS2 Football

Year 4-6 Netball

KS2 Drama & Musical
Theatre

EYFS & KS1 Multi Skills

KS1 and KS2 BSL

Tuesday

Year 3 and 4 Choir

KS1/KS2 Street Dance

KS2 Cricket

Sewing

Wednesday

Year 4 -6 Choir

Year 2/3 Gym

Year 6 Pets

KS1 and KS2 Athletics

KS1 and KS2 Art

Thursday

Year 5 & 6 Signing

Choir

Year 4-6 Dance

KS2 Sports

Friday

Year 5 and 6 Sports

EYFS, KS1 & KS2

Karate

Full Details: Times, Prices, Ways to Book and more via the school website

Free Clubs run by staff at Slade with spaces

Free Clubs run by staff at Slade Currently Full

Paid Clubs: Contact Organiser for full details