

SLADE PRIMARY SCHOOL



Inside this Issue:

- 02: From the Headteacher
- 03: For your Diary
- 04: Around School
- 05: Around School
- 06: Invicta Maths Challenge
- 07: Challenge Yourself
- 08: Around School
- 09: Our Communication to You
- 10: Slade Stats
- 11: Slade on X
- 12: Slade+

School Newsletter Term 2 Issue 6
Friday 8 December 2023

KAREN SLADE

FROM THE HEADTEACHER

Dear Parents and Carers,

Christmas well and truly arrived today at Slade! Children and staff have all been looking very festive in their Christmas jumpers and outfits as we all enjoyed the Christmas Sale and Christmas Lunch. A huge thank you to all our parent helpers who have been busy in school these past weeks organising the fabulous sale which the children all thoroughly enjoyed this morning. Your help in making Christmas such a special time here at Slade is very much appreciated. Thank you too to our cook Sarah and her amazing catering team for producing such a fabulous feast for us all at lunchtime today. Delicious!

Massive congratulations and well done to all the children and staff involved in the Reception, Year 1 and Year 2 productions that were performed throughout this week. The acting, singing, dancing, signing and narrating were all absolutely fabulous and I know that everyone who came to watch left feeling thoroughly Christmassy! Special thanks also to Councillor James Lark, Mayor of Tonbridge and Malling, and Councillor Mark Hood too who both gave up time in their busy schedules to come and enjoy a show! We hope that you enjoyed the children’s performances as much as we all did! Well done and thank you children, we are all very proud of each and every one of you!

Huge congratulations to Riitaj, Alex, Olivia and Abigale in Year 6 who earlier this week entered the Invicta Maths Challenge competition at Invicta Grammar School Maidstone. Huge congratulations to the team for coming runners up in the competition and for representing the school so splendidly too. Do read on into the newsletter to find out more! Well done and congratulations too to everyone in Dragon, Wyvern and Sprite classes who I revealed in assembly this morning as this months’ Times Tables Rock Stars competition winners; they are all now very excited about their reward of a Christmas movie afternoon next Tuesday! Well done children, all of that times tables practice was worth it!

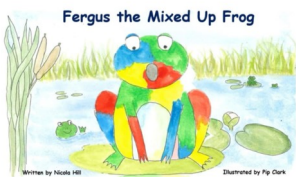
Looking ahead, our Key Stage 2 choir will be out and about next week spreading their Christmas cheer further afield as they enjoy their much sought-after slot singing Christmas carols and songs around the tree in Trafalgar Square! The children will be entertaining all passers-by with their singing during a 45-minute window starting at 4pm whilst shaking their collection buckets (and QR codes!) with the aim of raising funds on behalf of our PTA. Do drop by and have a listen if you’re passing through that way on Tuesday; see you there!

Once again, the collection of lost property items in school has rapidly grown in recent weeks! As always, we do endeavor to return all items to their rightful owners wherever possible so please do help us by ensuring that all items of your child’s clothing and their belongings are clearly and permanently named. Please also ensure that the names of any previous owners in our pre-loved uniform are removed in order to avoid confusion when trying to return clothing items. All lost property will be displayed at pick up times in the coming days with any unnamed and unclaimed items at the end of term once again making their way to the PTA uniform store for re-sale. So please do take a look and take what you can when the lost property is out on display; thank you.

Finally, many thanks to those families who attended the ‘Fergus the Frog’ book signing session last week; it was lovely to see so many of you there. Your purchases and donations raised £28 which will now be used to buy some more books about emotions for the library, so thank you to all involved.

Have a lovely weekend,

Karen Slade



DIARY DATES

NEXT WEEK AT SLADE

Next Week:

Day	Event
Monday 11 December	NHS Flu Vaccinations All School where consent has been given 18:30: Carols by Candlelight - St Peter and St Paul Church
Tuesday 12 December	KS2 Choirs Performances at Greater London Authority Christmas Carol Event Trafalgar Square, London - Details known to participants
Wednesday 13 December	PM: Class Christmas Parties
Thursday 14 December	
Friday 15 December	Last Day of Term 2

Forest School and Swimming Next Week:

MONDAY	Elf Class Forest School - This is a date alteration
TUESDAY	Griffin Class Forest School Dragon Class Swimming
WEDNESDAY	Gruffalo Class Forest School
THURSDAY	Dragon Class Forest School Griffin Class Swimming - Postponed due to instructor unavailability. <i>Please await further information</i>
FRIDAY	

Further Ahead:

Monday 18 December

-

Tuesday 2 January

CHRISTMAS/ NEW YEAR
HOLIDAY

School Closed to all Pupils

Wednesday 3 January

FIRST DAY OF TERM 3

School Open for all pupils

Wednesday 10 January

PRE APPLICATION OPEN
MORNING

Book via: [https://
forms.office.com/e/KHHhvQ1MCg](https://forms.office.com/e/KHHhvQ1MCg)

SLADE JOURNAL

AROUND SCHOOL

Daily Mile Winners

Congratulations to all of the children in Hippogriff, Wyvern and Hydra Classes who have won this term's Daily Mile competition.

Each class across the school takes part in an internal competition to tally as many laps of the playground as they can during their daily run, walk and skip.

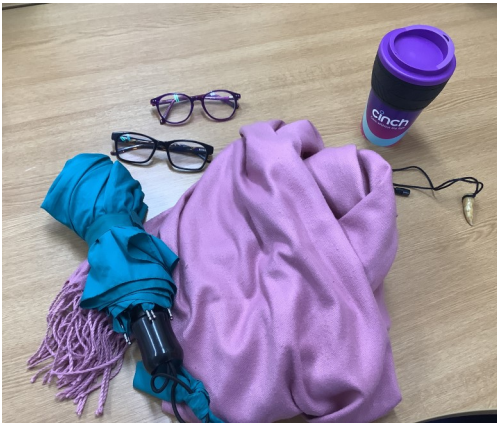
The class prize for this term was a trip to Tonbridge Park and this will take place on Thursday 14 December. We look forward to many more miles being made next year!



Guests' Lost Property

We have had lots of visitors in and out of school this week as we have hosted the EYFS and KS1 shows as well as members of the PTA who have been busy organising today's events across Slade.

The number of guests has led to the inevitable amount of lost property; pictured left. If you recognise any of these items, left on school grounds and in the main hall through the week, please contact the school office via office@slade.kent.sch.uk or 01732 350354.



Used Uniform Sale and Book Signing

Thankyou to everyone who visited the PTA sale last week and at the same time managed to say hi to Nicola Hill and Pip Clark who were signing copies of their book *Fergus the Mixed Up Frog*.

The used uniform sale raised £230 for funds that will be ploughed immediately back into school life for the children across the school.

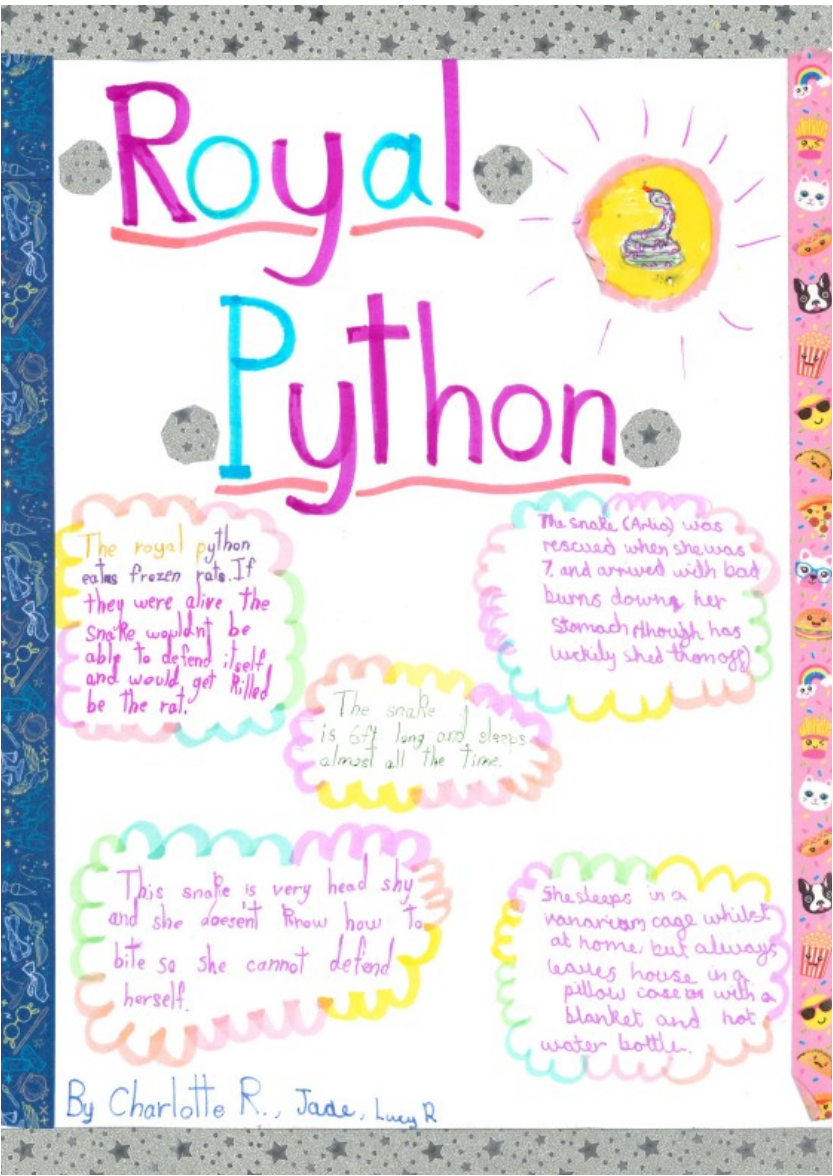
Sahar, Flora and the team are already planning the next sale for the new year - keep an eye out on the PTA Facebook site and here in the newsletter for details soon.



Happy Bunnies

We are very grateful for the very kind donations made by the members of the Year 6 Pet Club this term; you and your parents have been very kind and have allowed us to purchase lots of food and other necessities for Ziggy and Dibbles, our resident and much loved school rabbits.

Pet Club continues to go from strength to strength thanks to the interest shown by the children and the care given by club leader, Louise Pearson. This is highlighted by the generosity of donations and by the learning that the children continue to do when they get home, the perfect example being this poster prepared by Charlotte, Jade and Lucy after the visit of the Royal Python into the club recently.



SLADE JOURNAL

AROUND SCHOOL

Christmas Week at Slade

We have had a fantastic Christmas Festive Week at Slade this week as parents, carers and friends have enjoyed our seasonal shows performed by our Early Years and Key Stage 1 children each of who took to the stage twice during the week, acting, singing, story telling and dancing to a combined audience of over 600 adults through the three days of shows.

The Reception Year classes told the traditional Nativity Story known to Christians the world over, Year 1 performed the story, Twas the Night Before Christmas and the Year 2 children amazed their audiences with their showing of ‘The Inn-Spectors’.

Reviews from the parents and carers we spoke to after the shows were unanimous in their praise for the performances of all of the children. We are pleased everyone had such a good time.

The Year 1 children were especially pleased to be watched by VIP guests during their show- the Mayor and Mayoress of Tonbridge and Malling, Cllr James Lark and Jill Lark and then for our youngest performers in EYFS, local Judd Ward Green Councillor, Cllr Mark Hood . Our special guests had a wonderful time watching the shows.

Today, has seen Christmas magic spill out across school. Firstly, the PTA have held their wonderful Christmas Market with the children spending their pennies on presents for all of the family.

Nourish have then served their famous Christmas Meal to over 390 of our 421 children - a huge effort headed for the first time by head cook Sarah.

Thankyou to everyone involved in a special day for the children at Slade, including our SEN Team who make sure that the day is enjoyed inclusively by all of the children, especially those that find these events tricky by providing quiet and safe rooms where and when they were needed.



SLADE JOURNAL

AROUND SCHOOL



Invicta Maths Challenge

We were incredibly proud of our team who were selected to represent Slade at the Invicta Grammar School Maths Challenge on Wednesday.

The challenge, hosted at the school just outside the town centre in Maidstone, tested teams of four pupils from twelve schools across Kent in different Maths skills both against each other and the clock.

We are delighted to say that the Slade team of Alex, Riitaj, Olivia and Abigale finished in second place overall, something they and Maths Leader, James Duffin, are incredibly proud of. Mr Duffin had this to say:

'All four of the children did fantastically well. Myself and Mrs Buckland were really impressed at how they listened to instructions, worked well as a team and thought carefully about the most efficient way to solve problems. All this coupled with lots of hard work!'

The standard of the questions was extremely high, so the children should feel extremely proud to have done so well. 'How many times will you write the digit '1' if you write the numbers 1 - 1000 was a particularly interesting question to answer, especially under time pressure!'

It was our pleasure to be joined yesterday by Alex and Abigale, half of the successful Slade team. They were understandably proud of their achievement:

Alex: 'The competition was intense because you are battling to answer the question correctly, sometimes with seconds to spare. To maintain your concentration when you can see the time ticking away is a skill we learnt to use! The questions we faced in each different round challenged us in different ways. We had to decide how to work our way through the problems and how to use the team effectively. I think we worked really well as a team.'

Abigale described how the 'crossnumber' challenge proved to be the most difficult:

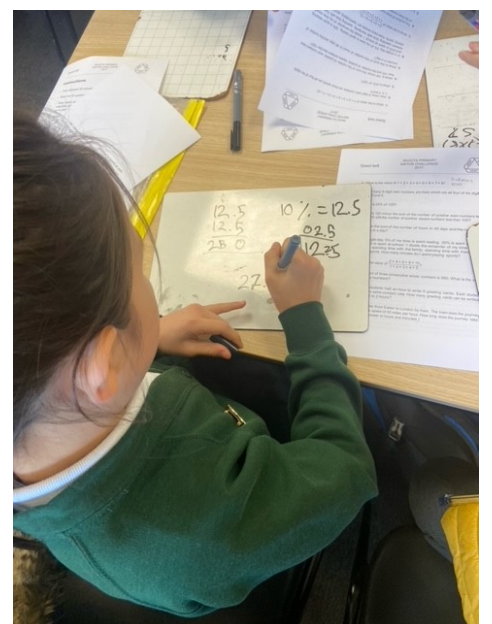
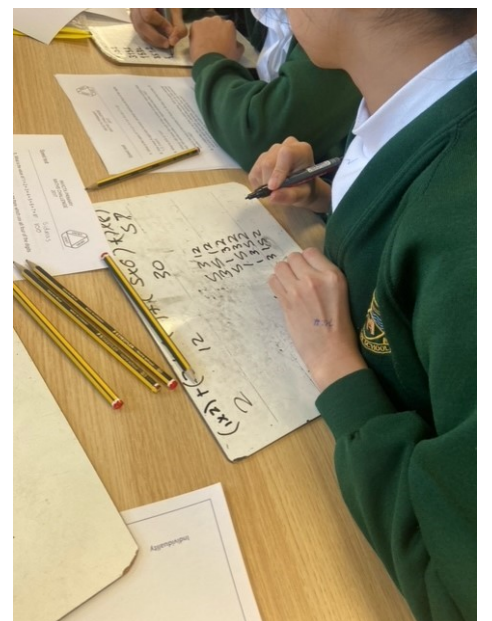
'Crossnumber is a bit like a cross word, just with maths problems. It was tough because each answer had lots of options and if you made one error you faced having to work back through all the questions again! We scanned through the questions first and made sure we completed the ones we knew straight away before working through the more tricky ones. By the end, my head hurt, but I was so proud of what we achieved together.'

Alex and Abigale enjoy maths and working with numbers, but they appreciate how some children find maths tricky, we asked if they had any advice for those children:

'I love maths questions because you have a sense of working through a problem all the way to the final answer. If you like investigating and solving puzzles, you can love maths too!'

'I like maths because there is not usually a wide variety of answer, you are working towards one - either it is correct, or not!'

Thankyou to our team for representing Slade so well all day during the competition, to the parents who transported them along the A26 to Maidstone and of course to our friends at Invicta Grammar School who are always such lovely, helpful and encouraging hosts.



SLADE JOURNAL

INVICTA MATHS CHALLENGE

Your Chance to Match our Maths Stars!

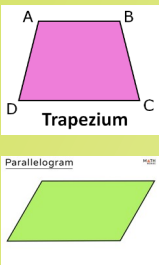
On our X (Twitter) feed on Wednesday evening, we invited our 1155 followers to have a go at some of the maths questions posed to Alex, Olivia, Riitaj and Abigale at the Invicta Challenge.

Here are the answers to those questions, which were used as quick fire starters at the competition. How did you do?!

1. Which positive integer below 50 has the greatest number of factors? **48**

2. What is the value of the third cube added to the fifth square number? **$27 + 25 = 52$**

3. What are the similarities between a trapezium and a parallelogram, and what are the differences?



4. Last year the price of a cinema ticket went up 25% from £4 to £5.
What percentage reduction would take the new price back to the old price? **20%**

5. Which is larger: five sixths or six sevenths? **Six Sevenths**

What is 10% of 90 minus 20% of 80 plus 30% of 70 minus 40% of 60 plus 50% of 50?
 $= 9 - 16 + 21 - 24 + 25 = 15$

How many seconds are there in one-half of a day plus one-third of an hour plus one-quarter of a minute?

$$\begin{array}{r} 432100 \\ + \quad 1200 \\ + \quad \quad 15 \\ = 433315 \end{array}$$

6. 2017 is a prime number.
When is the next year that is prime? **2027**

7. Write down seven integers that have a mean of 7, a median of 7, and a mode of 7, but which are not all 7. **0 7 7 7 7 7 7**

8. I catch the bus at 8:42 and the journey to town takes 45 minutes.
What time will I get there? **09:27**

9. I cycle at a speed of 15km per hour for 40 minutes.
How far do I travel? **10km**

10. Choose a mathematical word: describe it to a friend without saying the word itself.
Can they work out what you are describing?



As a special bonus, can you answer Mr Duffin’s challenge question:

How many times will you write the digit '1' if you write the numbers 1 - 1000

301

SLADE JOURNAL

INTRODUCING...

Libby Wilmshurst, Family Liaison Officer

My name is Libby Wilmshurst and I am the new Family Liaison Officer (FLO) at Slade Primary School. I wanted to take this opportunity to introduce myself and my role as a FLO.

A bit about me:

My background and training is in mental health and Humanistic Counselling. I have more than 10 years’ experience as a FLO and truly love the challenges and rewards this role gives.

So what does a FLO actually do?

My role is to support families with guidance, advice and, when needed, referral to external services. Even if all you need is a safe space to vent or cry, I will always do my best to support you. Issues could range anywhere from housing and finance to parenting and mental health. At times, I will work closely with families for an extended period. For other families a single meeting to discuss a parenting matter will be all that’s needed. There are no defined limitations on time-frames, nor minimum engagement expectations. Most often parents choose to meet me at school. However, if needed, I can also visit you at home to talk about your concerns in your own space.

As part of my role, I also work with our admin team and SLT to monitor and improve attendance. When needed, I will contact families to see if I can offer any help to ensure that children are here, every day, ready to learn, on-time.



Contacting me:

My working days are Monday to Thursday during term-time. You can contact me:

- by phone via my direct extension on the school line.
- on my email on: flo@slade.kent.sch.uk
- or simply by approaching me in person during drop-off and pick-up times.

I look forward to getting to know all the families at Slade.

SLADE JOURNAL

PTA NEWS

RAFFLE TICKETS

Roll Up for the Raffle

Time is running out to grab your chance of more fantastic prizes, courtesy of the PTA Christmas Raffle.

Thankyou to all of the companies and individuals who have donated prizes this year in what promises to be a super fundraiser.

For information and tickets: click on the link below.

Good luck!

<https://raffall.com/349434/enter-raffle-to-win-christmas-hampers-more-hosted-by-slade-pta>

Don’t forget to buy your tickets for the PTA Christmas Raffle. Prizes include:

- ★ Amazing Hampers
- ★ Beautiful Handmade Door Wreath
- ★ Vouchers for one month’s Membership at Tonbridge School plus Christmas Activities
- ★ Tickets for a family of 4 to see Snow White at the EM Foster Theatre
- ★ Boxing Day tickets for 2 adults to the Tonbridge Angels FC vs Maidstone match.

All money raised goes directly back into resources for the school.

Due to a slight technical hitch, the photos on the Raffall website are of previous years’ hampers....the prize descriptions online are correct though, and please see images of what you could win below!



DEAR PARENTS AND CARERS

ARBOR EMAILS SENT THIS WEEK

Please take the time to read emails sent to you, we try to make sure that everything you are sent relates to your child, so nothing is irrelevant. If you would like further information on any email we send, please contact the class teacher or the school office for assistance.

Date of Communication	Subject	Sent To
Monday 4 December	Menu Changes This Week	All School
Wednesday 6 December	Wyvern Class Forest School Highlights	Wyvern Class Parents
Wednesday 6 December	Daily Mile Winners	Various Classes’ Parents
Thursday 7 December	Year 6 Design Technology	Year 6 Parents

HERE TO HELP

HOW TO CONTACT US

We are always keen to hear from you if you have a positive, negative comment to make about anything going on at school, or if you have a question or need clarification on anything we have sent or said.

We have a number of ways for you to reach out to us; please see the guide below to see where you should direct your question or comments in the first instance in order to make sure we are able to answer you as quickly as possible.

My child’s class learning , class activities, lessons, homework	Your child’s class email address: <i>classname@slade.kent.sch.uk</i>
Wellbeing or pastoral support	
Concerns about bullying and behaviour	
Absence and Sickness, School Trips, Payments, School Events	office@slade.kent.sch.uk
Special Educational Needs (SEND)	
General Enquiries	
Admissions	admissions@slade.kent.sch.uk
Yeti’s Wraparound	General queries: and Childcare Voucher payments: yetis@slade.kent.sch.uk Late Collections: 01732 377760
School Lunches, Nourish Contract Catering	teresa@nourishcontractcatering.co.uk
Slade PTA	sladepta@yahoo.co.uk
The Governing Body and Chair of Governors	governors@slade.kent.sch.uk
Complaints	slaws@slade.kent.sch.uk
GDPR Information and Reporting	eugdpr@slade.kent.sch.uk or slaws@slade.kent.sch.uk

SLADE STATS

ATTENDANCE

Over a school year, we are due to be open for 190 days which equates to 380 sessions.
Registration takes place at 08:50 in the morning and after lunch in the afternoon.
Attendance is affected if a pupil is not present at school for any whole session including registration.

The class with the best attendance each week will win Attendance Ted.
Winners are announced via our X (formerly Twitter) feed @sladeprimarysch

Our Attendance
Target

97.0%

Our Attendance
This Week

94.4%

Our Attendance
This Year

95.5%

Attendance percentage this year to date by yeargroup:

EYFS	95.5%	Year 2	97.6%	Year 5	96.8%
Year 1	95.0%	Year 3	95.8%	Year 6	94.8%
		Year 4	96.7%		

SLADE STATS

PUNCTUALITY

Registers are taken at 08:50.
It is important that the children are at school on time every day to prevent disruption and upset to their day and for the rest of their class.

Punctuality Pup is awarded to the class with the best punctuality each week.
Winners are announced via our X (formerly Twitter) feed @sladeprimarysch

Pupils Late
This Week

59

This is the highest number of late children we have recorded in one week.
Please make sure you leave plenty of time to arrive at school on time, every day



We post a daily diary Today at Slade at 07:15 each morning as well as reminders, useful information, live updates from school and other community events of interest.

Date of Post	Subject
Saturday 2 December	Upper Castle Fields Parking Consulation
Sunday 3 December	ICYMI: Maths Newsletter
Monday 4 December	Today at Slade
Monday 4 December	Parents Apart Workshop
Tuesday 5 December	Today at Slade
Tuesday 5 December	Putting on a Show: Year 1
Wednesday 6 December	Today at Slade
Wednesday 6 December	Invicta Maths Challenge Team
Wednesday 6 December	Invicta Maths Challenge Questions
Wednesday 6 December	Congratulations, Maths Team
Thursday 7 December	Today at Slade
Thursday 7 December	PTA Raffle
Friday 8 December	Today at Slade
Friday 8 December	Scenes of Christmas
Friday 8 December	Celebration Assembly

A screenshot of a tweet from the account 'Invictagrammar' (@Invictagrammar), dated 22h. The tweet text reads: 'Thank you for coming along, and congratulations! 🌟'. Below the text is a retweet of a post from 'Slade Primary School' (@SladePrimarySch) dated 'Dec 6'. The retweeted post says: 'We are delighted to say that our team of Alex, Abigale, Olivia and Riliatj have achieved 2nd place in the Invicta Maths Challenge today. The competition included 12 teams including ours! ... [Show more](#)'. To the left of the retweeted text is the Invicta Grammar School logo, which features a black silhouette of a rearing horse above the text 'INVICTA GRAMMAR SCHOOL'. To the right of the retweeted text is a photograph of two children in green school uniforms sitting at a table, looking at a document. At the bottom of the tweet, there are icons for replies, retweets, likes (with a count of 1), and shares (with a count of 194).

Slade Primary School @SladePrimarySch · 2h
🇬🇧 Some of the sights of Christmas around Slade today.

Thankyou to Caroline, Emily and Eleanor from the PTA who organised and ran this morning's children's market. They raised £840 selling presents that our parents may just find in their Christmas stockings!

SLADE+

YOUR WAYS TO PAY

We have tried to make paying for special lessons, wraparound provision, school trips and visits amongst other events that happen through the year as easy as possible. Please see our handy guide here on the current prices and ‘Way to Pay’ when required.

We always make sure that all trips and special events are priced as fairly as possible but are acutely aware that extra costs can be tricky for our families. If you would like to discuss payment options for any extra spend at Slade, please contact us at anytime and confidentially via office@slade.kent.sch.uk.

School Dinners

School Dinners provided by Nourish Contract Catering are free to the following groups:
EYFS Classes, Year 1 Classes, Year 2 Classes, EYFS, KS1 AND KS2 pupils eligible for benefits related Free School Meals

School Dinners provided to KS2 (Year 3-6) children are charged at £2.40 per meal.
Credit should be loaded onto the Meals section of your Arbor account.

Yeti’s Wraparound Provision (Breakfast and After School Clubs)

Breakfast Club is charged at £4.20 per session

After School Club is charged at different pricepoints:

Until 16:30: £4.20 // Until 17:30: £8.60

If your child participates in an after school activity, please let us know via yetis@slade.kent.sch.uk and we charge only for the 16:30 - 17:30 time at £ 4.40.

Payment should be made via your online SCOPAY account. Please email yetis@slade.kent.sch.uk if you require a login to SCOPAY.

School Trips and other Special Events

You will be notified of the dates and costs of school trips or special events by email.

Payment and consent will be made via the Trips section of your Arbor account.

Paid For, Independent Clubs and Activities

Slade does not take payment for independently run clubs. All payment and correspondence should be directed to the club organiser.

Swimming Lessons

6 Swimming lessons are taken by all KS2 classes at a cost of £17.00.

Payment and consent will be made via the Trips section of your Arbor account once you have been advised of the dates of the sessions.

SLADE+

EXTRA CURRICULAR CLUBS NEXT WEEK

Monday

No Extra
Curricular
Clubs Today

Tuesday

No Extra
Curricular
Clubs Today

Wednesday

No Extra
Curricular
Clubs Today

Thursday

No Extra
Curricular
Clubs Today

Friday

No Extra
Curricular
Clubs Today

[Full Details: Times, Prices, Ways to Book and more via the school website](#)

Free Clubs run by staff at Slade with spaces

Free Clubs run by staff at Slade Currently Full

Paid Clubs: Contact Organiser for full details