

# SLADE PRIMARY SCHOOL



Inside this Issue:

02: From the Headteacher

03: For your Diary

04: Around School

05: Focus on Year 2

06: Red Nose Day Gallery

07: Pegasus Pizzeria

08: Slade Music

09: Slade Music

10: PTA News

11: Our Communication to You

12: Slade Stats

13: Slade on X

14: Slade+

**School Newsletter Term 4 Issue 4**

Friday 15 March 2024

# KAREN SLADE

## FROM THE HEADTEACHER

Dear Parents and Carers,

Well done and thank you to everyone for supporting us with our fundraising for Comic Relief today and for the online donations that you have made. It has been lovely to see everyone enjoying wearing their red noses at very interesting times across the day! Well done to the children, who in addition to joining in with today's non-uniform day, have also embraced the crazy hair theme too! Donations can still be made at: [Just Giving Slade Primary School RND24](#).

Well done to everybody, it was lovely to see so many families enjoying a fabulous evening on Monday at Tonbridge Baptist Church watching our Key Stage 2 choir perform in the Tonbridge School Choir Celebration, following the welcome return of this popular event. As always, all of our singers were amazing, whilst demonstrating their proficiency with BSL signing too! Well done to all of the children who were a credit to the school, not only with their singing but also by being such positive ambassadors for Slade throughout the entire evening too; we are all very proud of you! Special thanks to Mrs. Stephens and Mrs. Knee for all of your hard work in preparation for this moment and a special mention to Mrs. Martin for leading the children with their BSL signing. Thank you everyone!

On Wednesday this week, Pegasus Class took their learning beyond the school grounds with our Year 3 Italian experts taking a trip to Pizza Express to learn how to make the perfect pizza! The pizzas that they made and brought back to school to enjoy all looked and smelt amazing! Well done to all the children involved for your fantastic behaviour and enthusiasm during this visit. Thank you too to all adults who gave of their time to organise and accompany the children on the trip. Your turn next week Hippogriffs!

A huge thank you to the PTA volunteers for organising the fabulous Film Night for our Reception and Key Stage 1 children that was held on Wednesday after school for our youngest children to enjoy. The excitement in the school hall really was immense as they all enjoyed their sausage rolls and popcorn, with some of the children actually managing to watch parts of the film too! A great time really was had by all who stayed on for the Slade cinema experience; many thanks to the PTA team for providing this opportunity for the children to enjoy and to all of the staff team who stayed to help out too.

Despite the Class Rep's meeting not taking place as planned earlier this week we would still like to pass on our thanks to those parents and carers who shared their feedback on this term's 'hot topic' of 'Lunchtimes' with their Class Reps. Please be assured that all of your feedback has now been forwarded on to Miss Garrett and I. It was great to read of your ideas and thoughts which will be used to further inform developments at lunchtime, both in the dining hall and outside too. Looking forward to providing an update to your reps in our next meeting during Term 5.

A reminder that all items of clothing worn to school should be named in order that we can return any uniform that becomes misplaced to their rightful owner. Our lost property boxes are overflowing with unnamed items that haven't been claimed; therefore, items will be displayed during the upcoming parent consultation evenings for you to take a look to try to retrieve your child's missing uniform. Any unclaimed and unnamed items at the end of this term will be donated to the PTA pre-loved uniform store for re-sale.

Finally, a huge thank you to England Lioness Alessia Russo for the video message that she sent to our girls' football team to wish them well for their semi final tournament next week! What a surprise that was for everyone in assembly this morning! Thank you Alessia!

**I hope you all have a lovely weekend.**

**Karen Slade**



# DIARY DATES

## NEXT WEEK AT SLADE

### Next Week:

Day	Event
Monday 18 March	Year 4 Classes Visit to Tonbridge Library
Tuesday 19 March	National League South Football Finals Day Arbor Park, Slough Town FC 16h - 19h - Parent - Teacher Consultations
Wednesday 20 March	09:30 - Hippogriff Class Visit to Pizza Express
Thursday 21 March	16h - 19h - Parent - Teacher Consultations
Friday 22 March	

### Forest School and Swimming Next Week:

MONDAY	Elmer Class Forest School
TUESDAY	Gruffalo Class Forest School Pegasus Class Swimming
WEDNESDAY	
THURSDAY	Hippogriff Class Swimming
FRIDAY	Pixie Class Forest School

### Further Ahead:

Tuesday 26 March

YEAR 4 VISIT TO TONBRIDGE  
CASTLE

Please make sure you have  
provided consent and payment  
via your Arbor account

Thursday 28 March

LAST DAY OF TERM 4

Monday 15 April

FIRST DAY OF TERM 5

Tuesday 16 April

PRIMARY SCHOOLS NATIONAL  
OFFER DAY

If you have applied to join Slade,  
please see our website for the  
next steps: [Admissions](#)

# SLADE JOURNAL

## AROUND SCHOOL

### Parent - Teacher Consultations: Club Cancellations

We have been notified today of the arrangements for next week's after school Activity clubs on Tuesday and Thursday evening (the days of our Parent - Teacher Consultations).

All inside Activities will be cancelled or postponed on these days. This affects the following:

#### Tuesday 19 October

DanceMode (both sessions)

Sewing

LEGO

#### Thursday 21 March

Sewing

Yoga

Cheerleading

Homework

Parents should await further information from either the club organiser if an independent company runs the Activity (DanceMode and Sewing) about new dates to compensate for this - likely to be in the final week of this term, but to be confirmed.

#### School Run Activities:

**LEGO - This club is postponed only and will run for booked participants on Tuesday 26 March**

**Yoga - This club is cancelled and has had the last session of this term**

**Cheerleading - Please see letter sent today re rehearsals on Monday 25 March from 07:45**

**Homework - This club is postponed only and will run for booked participants on Thursday 28 March**

We apologise for the inconvenience these cancellations and postponements will cause.

Other than where notified above, there will be no Activity sessions happening in the last week of term as is normal at the end of seasonal terms and as indicated on the Clubs and Activities timetable and booking email. This affects the week Monday 25 March - Thursday 28 March.

Yet's Wraparound remains open each and every school day.



### Coffee and Canes!

Thankyou to all of the parents who have donated coffee pots to Forest School following last week's X post plea. We could always do with more, so if you have any of the instant coffee containers that you have finished with such as that in the picture (left) please consider recycling them via the school office where we will pass them on to Tina Hall in Forest School.

Our EYFS Classes are also on the hunt, this time for any unwanted long garden canes or old tarpaulin sheets taking up space in the garage. They aim to use them to assist the children to make their own dens. Again, if you have any spare that you would be happy to donate to school, please donate via the school office or at Yeti's drop-off and we will pass them on to Mrs Hitchcock and Mrs Pearson in Early Years.

# SLADE JOURNAL

## FOCUS ON YEAR 2

### Titanic Experience

We were delighted to be joined on Tuesday by Dylan Goss from One Day Creative, who produced a day of learning about the building, sailing and demise of the super liner The Titanic through acting and performing. Both Gnome and Sprite Classes from Year 2 took part in the event.

They began by acting if they were freezing cold and shivering and not at all looking forward to the day's activities. In fact one child shouted out, 'Why are we even doing this?!'

Year 2 then pretended that they were planners at the ship building giant Harland and Wolff in Belfast, Northern Ireland. They had to think about all of the problems they would have had to overcome to build what was the largest ship of its kind ever built.

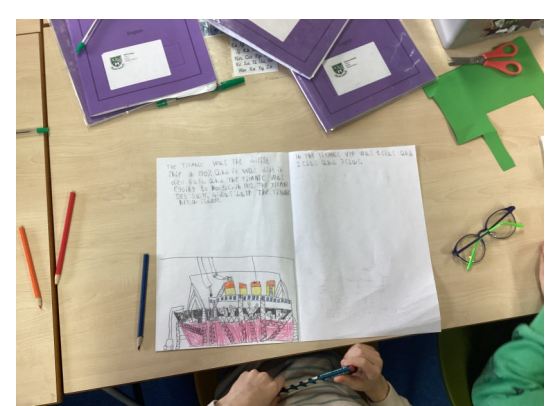
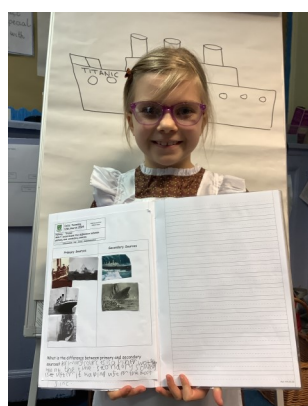
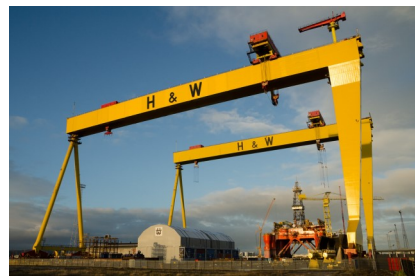
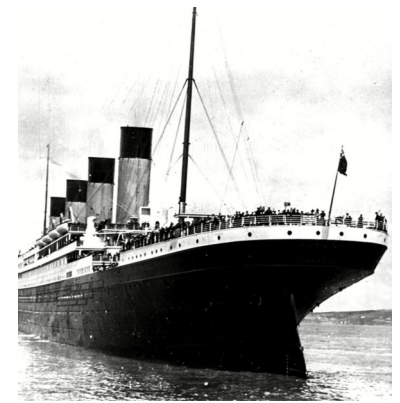
The classes had all dressed up for the occasion, with thanks to all of our families for their help in finding and preparing outfits that all reflected the era of Titanic (the 1910's) whether they be poorer citizens, the upper classes, or indeed part of the workforce on board. Using the costume ideas, Dylan asked the children to perform being one of the third class passengers versus how one would walk and act if they were a first class passenger at the time. The children used the knowledge they had already learnt in History topics to assist their moves.

During a break in the workshop, the children watched footage of Titanic from the Belfast Builders Yard through to her setting sail from Southampton in 1912. The film really helped them to picture the scene of what it would have been like to have been aboard on the ultimately fateful journey.

Sprite and Gnome Classes took in a lot of information during their workshop and to help secure their learning, when they returned to the classroom they successfully put together a timeline of the events starting with the planning and building of the liner, the calm waters that they sailed through, the marvellous meals served on board, through to the first warning signs of danger ahead and the subsequent sinking and rescue attempts.

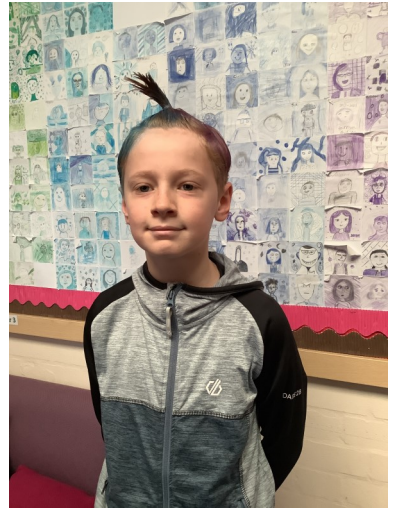
In further learning, the children learnt about primary sources and secondary sources and were able to identify from pictures which was a primary source taken from the actual event and which were secondary - made after the event from reports.

It was a fantastic day of learning through actions, with thanks to Dylan for presenting the workshop.



# SLADE JOURNAL

## RED NOSE DAY GALLERY



To donate to the Comic Relief Red Nose Day fund just click on this link: [Just Giving Slade Primary School RND24](https://www.justgiving.com/SladePrimarySchool/RND24)

To find out about how the funds are spent click here: <https://www.comicrelief.com/what-your-money-does/>

# SLADE JOURNAL

## FOCUS ON YEAR 3

### Pegasus' Pizza Parlour!

We are very grateful to our good friends at Pizza Express in Tonbridge High Street for again hosting our Year 3 classes for a free workshop and pizza making session.

This week, Pegasus Class walked to the popular restaurant and had a wonderful time as they learnt the magic of creating the perfect pizza and how to keep an orderly and safe kitchen.

The children were given a special VIP tour of the premises, which saw them see all of the stock rooms, the fridges and walk-in freezers as well as the public dining areas.

In the kitchen, they were shown how to beat dough, add to a pan (successfully making sure to completely cover the base) add the correct amount of tomato sauce before sprinkling on the cheese and adding the finished effort to the pizza oven. After the instruction, everyone created their own - before returning to school to complete the job by eating their own pizza. As our X followers will know, some of the pizzas did not last for long as they were gobbled up quickly by our new chefs!

Next week, Hippogriff Class will be on their way over to the High Street for a similar visit which we know they will enjoy just as much as their friends from Pegasus!

At the end of term, both classes will be remembering the learning from our Pizza Express visit by making their own pizza in school - they will have different toppings to choose from so please make sure all food allergies are up-to-date on your Arbor account where appropriate.



# SLADE JOURNAL

## MUSIC

### The Chance to Perform

On Wednesday, we were lucky enough to speak with Isla in Year 5 who had agreed to tell us all about a very special musical performance that she, along with other pupils from Slade, took part in recently.

The concert was organised by Madeline Butcher, who teaches violin to children across the local area and comes in to school to teach keen violinists who have booked lessons with her one a week.

Isla said, 'It was a lovely concert where everyone who has been learning to play the violin with Miss Butcher had a chance to perform in front of their families. The concert happened at Tonbridge Methodist Church and we could play the pieces of music that we had been practising hard to play. I was very pleased with how it went and how I played, not just me but all of the musicians, especially from Slade! We performed a duet with Madeleine, my choice of music was a piece called 'Flying High' which I will also be playing at the Slade Spring Concert.

Isla described her learning journey as she strives to improve with every lesson, 'I love learning and I have been taught the violin for 3 years now and I really enjoy it - it can be tough sometimes, but that is why we learn and practise hard, to get better. My favourite bit of music to play is 'Jingle Bells' but the music I really want to be able to play successfully is the theme to The Muppet Show!' We wait with anticipation in the school office to hear Isla play this as we are all great Muppet fans!

Isla is thrilled to also play with her mum, who also plays the violin and has just come into possession of an instrument from Isla's grandparents house. 'It is really lovely playing with mum, I am going to enjoy playing with her at home.'

Thankyou to Isla for speaking to us and good luck to all of the young musicians as you progress through your learning, practising and playing.



### Slade Spring Concert: Tuesday 26 March

If you want to see her play and catch performances from singers and musicians from across the school, come along to our Spring Concert at St Saviours Church on Tuesday 26 March from 18:30.

All are welcome for a wonderful evening of music as Spring sets in.



### Tonbridge Schools' Choir Spectacular

At the beginning of this week, the Year 4-6 Choir took part in the annual Tonbridge School's Choir Spectacular , hosted by the Tonbridge Lions Club at Tonbridge Baptist Church.

Mrs Stephens, now the longest standing schools choir leader was delighted with the way our choir performed on the evening. She spoke with us the morning after:

'The choir evening is a lovely event as it brings together keen singers from all of our local primary schools. There were groups from our friends at Stocks Green, Hadlow, Woodlands, Bishop Chavasse and Royal Rise schools.

Our choir sung last, which we were nervous about at first, but was fantastic as the girls and boys sung so well - it was a fantastic way to bring the regular part of the show to an end. In amongst the other schools numbers we also heard a solo piece from Sophie and also a duet with Olivia and Charlotte (all Year 6) as well as a BSL signed song with Susie Martin.'

Just as special was the grand finalé to the event which brought together all of the choirs to sing together for the highly impressed audience which included the Mayor and Mayoress of Tonbridge and Malling. The choirs sang the Matilda Medley that they all performed at the winter series of Young Voices concerts at the o2.



### Joyous Jiwon

We are delighted to bring you news of Jiwon's very successful time at the recent Tunbridge Wells Arts Festival.

Jiwon took part in the event, which celebrated its 75th anniversary this year, at the beginning of March and performed in the String Instrument competition for school Years 3 and 4 and also in the String Instrument Grade 2-3 competitions, where he played the violin.

It is with a lot of pride that Jiwon was able to announce to us that he won both competition categories - testament to the dedication and confidence that he has in his playing.

Jiwon spoke with us this morning: 'I have been playing the violin for three years , but it is still worrying a little bit when you play in front of an audience, but I can soon relax once I start playing. I do feel a lot smiley though when they all applaud at the end of the performance!'

Jiwon also plays for the TYMS orchestra at Judd School - 'It is fun playing with other people as well as part of an orchestra, it brings the best out of us all.'

Thankyou to Jiwon for speaking to us today and good luck with your next grade test.



**PTA Presents:**

# **The Slade Easter Bunny Mystery...**

**Find the clues and work out which teacher has hidden the chocolate bunnies to claim your prize!**

**£2.50 per child taking part in the hunt**  
**Tickets will be on sale ahead of the event.**



**CHOCOLATE  
BUNNY PRIZES**

**• AMAZING BAKE SALE •**

**THURSDAY**  
**MARCH 28<sup>TH</sup>**

**SCHOOL PLAYGROUND**  
**3.30-5 pm**



**Help the PTA fundraise to update outdoor learning and play resources**

# DEAR PARENTS AND CARERS

## ARBOR EMAILS SENT THIS WEEK

Please take the time to read emails sent to you, we try to make sure that everything you are sent relates to your child, so nothing is irrelevant. If you would like further information on any email we send, please contact the class teacher or the school office for assistance.

Date of Communication	Subject	Sent To
Wednesday 13 March	Year 6 Electrical Games	Year 6 Parents
Thursday 14 March	Making Pizza - Allergy Records on Arbor	Year 3 Parents
Thursday 14 March	An Update from Mrs Slade: Pixie Class	Pixie Class Parents
Thursday 14 March	An update from Mrs Slade: Hippogriff Class	Hippogriff Class Parents
Friday 15 March	An update from Mrs Slade: Pegasus Class	Pegasus Class Parents

## HERE TO HELP

### HOW TO CONTACT US

We are always keen to hear from you if you have a positive, negative comment to make about anything going on at school, or if you have a question or need clarification on anything we have sent or said.

We have a number of ways for you to reach out to us; please see the guide below to see where you should direct your question or comments in the first instance in order to make sure we are able to answer you as quickly as possible.

My child's class learning , class activities, lessons, homework Wellbeing or pastoral support, Concerns about bullying and behaviour	Your child's class email address: <a href="mailto:classname@slade.kent.sch.uk">classname@slade.kent.sch.uk</a>
School Trips, Payments, School Events Special Educational Needs (SEND) General Enquiries	<a href="mailto:office@slade.kent.sch.uk">office@slade.kent.sch.uk</a>
Sickness reporting, Absence requests and medical appointments	<a href="mailto:attendance@slade.kent.sch.uk">attendance@slade.kent.sch.uk</a>
Admissions	<a href="mailto:admissions@slade.kent.sch.uk">admissions@slade.kent.sch.uk</a>
Yeti's Wraparound	General queries: and Childcare Voucher payments: <a href="mailto:yetis@slade.kent.sch.uk">yetis@slade.kent.sch.uk</a> Late Collections: 01732 377760
Extra Curricular Activities and Representative Sports Events	<a href="mailto:sportsandactivities@slade.kent.sch.uk">sportsandactivities@slade.kent.sch.uk</a>
School Lunches, Nourish Contract Catering	<a href="mailto:hildasmith@nourishcc.co.uk">hildasmith@nourishcc.co.uk</a>
Slade PTA	<a href="mailto:sladeppta@yahoo.co.uk">sladeppta@yahoo.co.uk</a>
The Governing Body and Chair of Governors	<a href="mailto:governors@slade.kent.sch.uk">governors@slade.kent.sch.uk</a>
Complaints	<a href="mailto:slaws@slade.kent.sch.uk">slaws@slade.kent.sch.uk</a>
GDPR Information and Reporting	<a href="mailto:eugdpr@slade.kent.sch.uk">eugdpr@slade.kent.sch.uk</a> or <a href="mailto:slaws@slade.kent.sch.uk">slaws@slade.kent.sch.uk</a>

# SLADE STATS

## ATTENDANCE

**MOMENTS  
MATTER,  
ATTENDANCE  
COUNTS.**

Over a school year, we are due to be open for 190 days which equates to 380 sessions.

Registration takes place at 08:50 in the morning and after lunch in the afternoon.

Attendance is affected if a pupil is not present at school for any whole session including registration.

The class with the best attendance each week will win Attendance Ted.

Winners are announced via our X (formerly Twitter) feed @sladeprimarysch

Our Attendance  
Target

97.0%

Our Attendance  
This Week

96.8%

Our Attendance  
This Year

95.2%

National Average = 94.3%\*

National percentile rating for Slade = 70

*\*data from schools and MATs who use Arbor MI*

# SLADE STATS

## PUNCTUALITY

Registers are taken at 08:50.

It is important that the children are at school on time every day to prevent disruption and upset to their day and for the rest of their class.

Punctuality Pup is awarded to the class with the best punctuality each week.

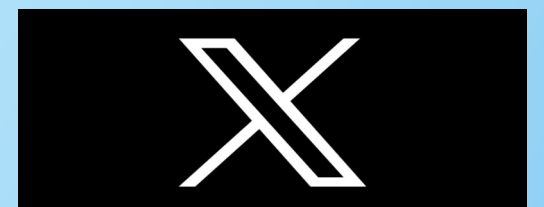
Winners are announced via our X (formerly Twitter) feed @sladeprimarysch

Pupils Late  
This Week

40

# SLADE ON X

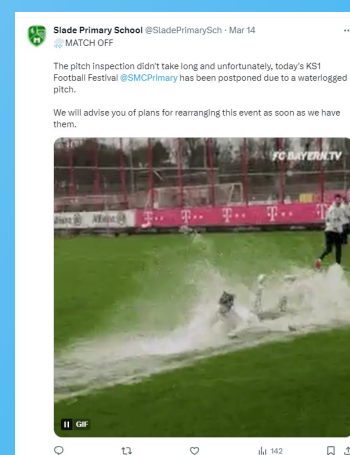
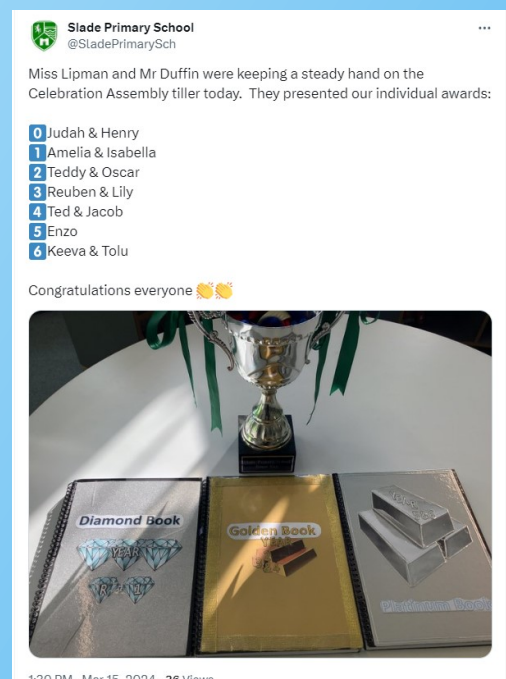
## X-POSTS (Formerly Twitter)



We encourage you to follow us on the social media platform X, formerly known as Twitter.

We post a daily diary Today at Slade at 07:15 each morning as well as reminders, useful information, live updates from school and other community events of interest.

Date of Post	Subject
Sunday 10 March	Coffee Tins for Forest School
Monday 11 March	Today at Slade
Monday 11 March	Tonbridge Choir Festival
Tuesday 12 March	Today at Slade
Tuesday 12 March	Off to Belfast
Tuesday 12 March	Dressed for the Occasion
Tuesday 12 March	The Titanic Story
Tuesday 12 March	Primary and Secondary Sources In Year 2
Tuesday 12 March	Thankyou One Day Creative
Wednesday 13 March	Today at Slade
Wednesday 13 March	The Perfect Pizza
Wednesday 13 March	The Pegasus Pizzeria
Thursday 14 March	Today at Slade
Thursday 14 March	Pitch Inspection at St Margaret Clitherow
Friday 15 March	Today at Slade
Friday 15 March	Red Nose Day
Friday 15 March	Celebration Assembly



# SLADE+

## YOUR WAYS TO PAY

We have tried to make paying for special lessons, wraparound provision, school trips and visits amongst other events that happen through the year as easy as possible. Please see our handy guide here on the current prices and 'Way to Pay' when required.

We always make sure that all trips and special events are priced as fairly as possible but are acutely aware that extra costs can be tricky for our families. If you would like to discuss payment options for any extra spend at Slade, please contact us at anytime and confidentially via [office@slade.kent.sch.uk](mailto:office@slade.kent.sch.uk).

### School Dinners

School Dinners provided by Nourish Contract Catering are free to the following groups: EYFS Classes, Year 1 Classes, Year 2 Classes, EYFS, KS1 AND KS2 pupils eligible for benefits related Free School Meals

School Dinners provided to KS2 (Year 3-6) children are charged at £2.40 per meal.

Credit should be loaded onto the Meals section of your Arbor account.

### Yeti's Wraparound Provision (Breakfast and After School Clubs)

Breakfast Club is charged at £4.20 per session

After School Club is charged at different pricepoints:

Until 16:30: £4.20 // Until 17:30: £8.60

If your child participates in an after school activity, please let us know via [yetis@slade.kent.sch.uk](mailto:yetis@slade.kent.sch.uk) and we charge only for the 16:30 - 17:30 time at £ 4.40.

Payment should be made via your online SCOPAY account. Please email [yetis@slade.kent.sch.uk](mailto:yetis@slade.kent.sch.uk) if you require a login to SCOPAY.

### School Trips and other Special Events

You will be notified of the dates and costs of school trips or special events by email.

Payment and consent will be made via the Trips section of your Arbor account.

### Paid For, Independent Clubs and Activities

Slade does not take payment for independently run clubs. All payment and correspondence should be directed to the club organiser.

### Swimming Lessons

6 Swimming lessons are taken by all KS2 classes at a cost of £17.00.

Payment and consent will be made via the Trips section of your Arbor account once you have been advised of the dates of the sessions.

# SLADE+

## EXTRA CURRICULAR CLUBS NEXT WEEK

### Monday

KS1 and KS2 French  
First Class Football  
Drama and Musical  
Theatre  
Pottery  
BSL  
Multi Skills

### Tuesday

Please see page 4  
Year 3 and 4 Choir  
Cricket

### Wednesday

Year 4-6 Choir  
KS2 Sports Club  
West Kent Athletics  
The Art Trolley

### Thursday

Please see page 4

### Friday

Year 5 - 6 Sports  
Karate

[Full Details: Times, Prices, Ways to Book and more via the school website](#)

Clubs run by staff at Slade with spaces

Clubs run by staff at Slade Currently Full

Independent Clubs: Contact Organiser for full details