



SLADE PRIMARY SCHOOL

In this issue:

02: From the Headteacher

03: Diary Dates for Next Week

04: Around School

05: Safer Internet Week

06: Safer Internet Week

07: World Book Day

08: For Families

09: Forest School

10: Slade Stats

11: Sport, Fitness and Wellbeing

12: Sport, Fitness and Wellbeing

13: PTA News

14: Our News - Lily and Eleanor

15: We Are Slade - Contacts and Payments

16: Diary Dates - Looking Ahead

School Newsletter

Term 3, Issue 6

Friday 14 February 2025

Karen Slade : From the Headteacher

Dear Parents and Carers,

This final week of Term 3 has been another busy one with lots of exciting learning happening across the school!

Well done and thank you to our Year 6 'Safeguarding Champions', who took a lead role in our Safer Internet Day on Tuesday. All children across the school were learning how to stay safe online as part of this year's national event, around the theme 'Too good to be true? Protecting yourself and others from scams online.' Thank you to the children who worked alongside some of our younger children in school helping everyone in finding out more about staying safe online! Do check out our parent guides that have just been shared, and, as always please don't hesitate to contact us if you have any queries about online safety and keeping your child safe in the virtual world. A separate communication has been shared earlier today with parents of pupils in Year 6 addressing some of the matters that have arisen during discussion with some of our older pupils across the week so please do make this a priority read in the coming days. Finally, well done and thank you too to all those parents who have joined in with our early morning quiz this week to see how much our families know about enjoying a safer internet; do check back through the daily emails from across the week if you want to have a go!

Thank you to those parents who attended the parent workshop held earlier this week which was led by the Kent Adult Education Team. The 'Supporting your child's anxiety' workshop, which was held in person and exclusively for Slade parents, offered top tips to help when supporting your child with any anxiety that they might be experiencing. We hope that you found the information informative and the advice practical. Thank you to Libby Wilmshurst for organizing this event and for planning all future workshops too, details of which can be found further on in this newsletter.

Please look out for the separate communication regarding the Valentine's gift that your child will be today bringing home courtesy of our fabulous PTA! Thank you to all involved in once again arranging this gift for all of the children and setting up the half term fundraising challenge for them too. I look forward to hearing about all of your good deeds children during the half term break and announcing the winning class at the start of Term 4. In the meantime, do enjoy your sweet treats everyone!

Thank you again to those parents who responded earlier this term to our Wraparound provision survey, seeking your feedback regarding the provision at Yetis particularly in relation to extending the current opening hours. We are currently in discussion with the Local Authority regarding the availability of any additional funding for the provision here in school to support with any changes that we may wish to make moving forward as a result of your feedback. We will of course keep you updated and share any further developments with you, hopefully next term.

It's that time of term when our lost property bins are overflowing with items that have been misplaced! We have everything in there from cardigans to winter coats to gloves to wellies! As always, we do endeavour to return all items to their rightful owners wherever possible so please do help us by ensuring that all items of your child's clothing and their belongings are clearly and permanently named. All lost property bins will be displayed at pick up time today with any unnamed and unclaimed items at the start of next term once again making their way to the PTA uniform store for re-sale.

I hope that you all have a restful and enjoyable half term break and we look forward to seeing you all back in school on Monday 24 February.

Karen Slade

Diary Dates: Next Week at Slade

Monday 17 February - Friday 21 February

- February Break. School Closed to all pupils
- PTA Valentine Challenge Fundraiser - See page 12 for full details

Monday 24 February 2025

- First Day of Term 4
- Phoenix Class Forest School
- 14:30 - Pegasus Class Parents Reading Workshop - email of 13 February to Pegasus Class Parents refers
- [Extra Curricular Activity Clubs](#)

Tuesday 25 February 2025

- Sphinx Class Forest School
- Phoenix Class Swimming
- [Extra Curricular Activity Clubs](#)

Wednesday 26 February 2025

- 13:00 Brain Buddies: Details known to those signed up to attend
- [Extra Curricular Activity Clubs](#)

Thursday 27 February 2025

- Pegasus Class Forest School
- [Extra Curricular Activity Clubs](#)

Friday 28 February 2025

- Hippogriff Class Forest School
- [Extra Curricular Activity Clubs](#)



Looking further ahead?

Our yearly planner can be found on Page 9 of today's newsletter and online via [the school website](#).

Slade Journal: Around School

Last Day of Term 3

February Break Incoming

Today is the last day of Term 3, please remember that next week is the February break which separates the two Spring terms. Let's hope when we come back on Monday 24 February, that Spring has actually arrived!

We hope that all of our families have a pleasant break and we look forward to seeing you all again soon for lots of fun and learning throughout Term 4.

Hannah Mills, who runs the school library, would like to thank Jessica, Charis and Yifu for their time this term, which has allowed the school library to open to pupils during the lunchbreak.

If you would like to join this voluntary team to keep the library open every day and are able to help out between 12:30 and 13:30 any day please contact us via office@slade.kent.sch.uk. Hannah will be in touch with new volunteers shortly with more information.



Lending a Hand

Spring Parents' Meetings



We will be hosting the Spring Term Parent - Teacher Consultation meetings between 16:00 and 19:00 on Tuesday 25 and Thursday 27 March. These meetings are the perfect time to catch up with your child's teacher to discuss progress and targets in all areas of school life as we head towards Easter and the summer beyond.

The booking window to secure your chosen day and time will open on your Arbor account at 20:00 on Tuesday 25 February.

Thankyou to Nurse Emma Poole from the Kent Community Health Trust who provided our EYFS children in Elmer and Gruffalo Classes with their NHS Hearing and Vision screening on Tuesday.

As stated in the original letter about the screenings dated 12 December 2024, the results will be sent directly to parents and if there is any reason why your child may benefit from being referred to a specialist service, this will be done automatically and you will be contacted directly.

As ever though, if you have any immediate or subsequent concerns about vision, you are able to schedule a free eye test at a local optician.



Sound and Vision

Slade Journal: Around School



Safer Internet Day 2025 | Tuesday 11 February
Together for a better internet
www.saferinternetday.org



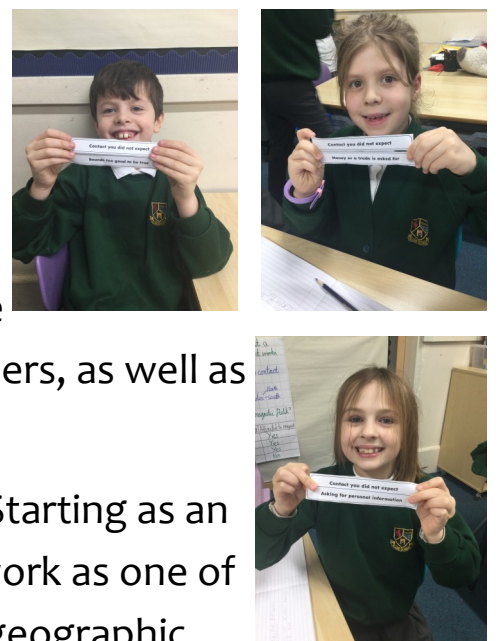
All week, the children across the school have been learning about various aspects of keeping safe when they are online. Thankyou also to the parents who have been taking part in our daily quiz based on this subject - we know you will have got most of the answers spot on!

In particular, we have been focusing on the main theme of this year's event; the issue of scams online and for young people, how to protect themselves and others, as well as what support is available to them.

Safer Internet Day has become a landmark event in the online safety calendar. Starting as an initiative of the EU SafeBorders project in 2004 and taken up by the Insafe network as one of its earliest actions in 2005, Safer Internet Day has grown beyond its traditional geographic zone and is now celebrated in 170 countries worldwide.

Organisers in the UK, the UK Safer Internet Centre are a partnership between Childnet International, Internet Watch Foundation and South West Grid for Learning.

For more information, take a look around the UK Safer Internet Centre website via [this link](#).



We have a number of guides on the [For Families](#) section of the school website that give advice on the most popular apps, and information from InternetMatters.org who cover the subjects we have used in our daily diary email quiz this week

We were also delighted to welcome our Safeguarding Governor, Sahar Zaidi Shirazee into school on Tuesday afternoon as she took a tour of the classrooms to see the learning going on for herself.

That learning included fantastic input from our team of Safeguarding Champions from Year 6, who had devised and presented age related games and activities for each yeargroup to help focus on the main subjects.



Slade Journal: Around School



Safer Internet Day 2025

SCREEN TIME

WHAT IS SCREEN TIME?

The amount of time spent using a device with a screen e.g. phone, tablet, computer. It can include activities such as playing games, streaming videos, browsing the internet

WHAT IMPACT CAN TOO MUCH SCREEN TIME HAVE?

Changes in behaviour, difficulty sleeping and concentration

Eye strain/vision problems - reduced blinking rates

Aches and pains from sitting in the same position for too long

TOP TIPS AND ADVICE

Digital 5 a day!

Consider breaking up the day or evening with different types of activities!

Find out more here:

<https://www.childrenscommissioner.gov.uk/digital/5-a-day/>

Set a Time Limit!



Consider setting time limits on each device so every user knows when it is time to come offline.

TALKING TO YOUR CHILD ABOUT LIFE ONLINE

Talking to your child about their life online can be very tricky for parents. Here are some top tips to help!

It's your choice - don't let others dictate when the time is right to use technology

Make time to communicate and find out what your child enjoys doing when online

Don't quiz them - have regular conversations to make it normal to talk about life online

'Show me' - ask them to help you with privacy settings, ask them what the risks might be

Lead by example - children learn lots from watching what others do when online

Reassure them - ensure your child knows you will help them out if need be

Remember...you don't need to be an expert...be a parent :)

PARENTAL CONTROLS

WHAT ARE THEY?

They are tools which allow parents/carers to place limits on a child's online activity and thereby mitigate risks that a child might be exposed to.

EXAMPLES OF PARENTAL CONTROLS YOU CAN USE

Setting time limits on a device particularly for bedtimes

Restrict in-app purchases

Monitoring your child's online activity or physical location

TOP TIPS AND ADVICE

Digital Family Agreement

Consider having an agreement for the whole family to clarify what is/isn't allowed, establish ground rules and agree when devices might be checked. An example here: parentsafelgfl.net/digital-family-agreement

Set up controls!

Use this website to help you set up various different parental controls for your child's device so that you remain in control of their safety.

www.internetmatters.org/parental-controls/

Remember to keep an open communication with your child so they know they can talk to you about their concerns when online!

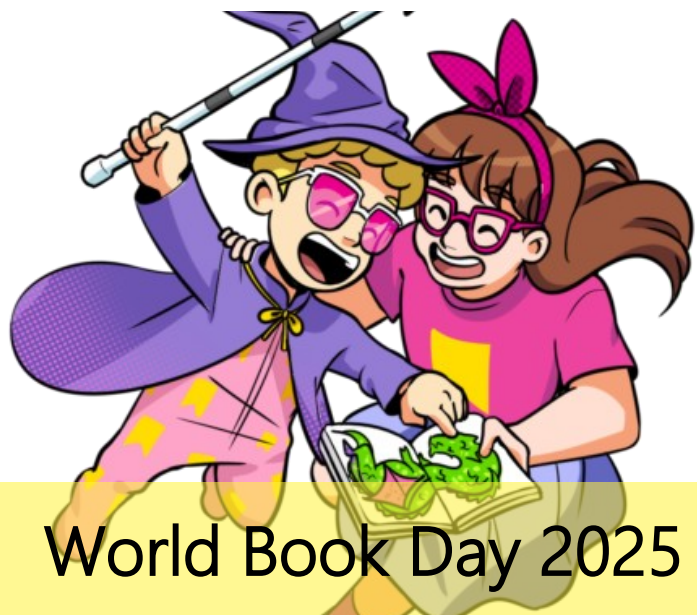
The links from information posters are one easy click away:

[Digital 5 a day | Children's Commissioner for England](https://www.childrenscommissioner.gov.uk/digital/5-a-day/)

[Digital Family Agreement](https://parentsafelgfl.net/digital-family-agreement)

[Parental Controls - Internet Matters](https://www.internetmatters.org/parental-controls/)

Slade Journal: Around School



World Book Day 2025

READ YOUR WAY

We are excited to inform you that this year's [World Book Day](#) is taking place on **Thursday 6 March**.

Reading Leader at Slade, Sarah Meers has written to parents to explain how excited we are at this special day coming around again and to provide details of the activities we will be getting up to on the day.

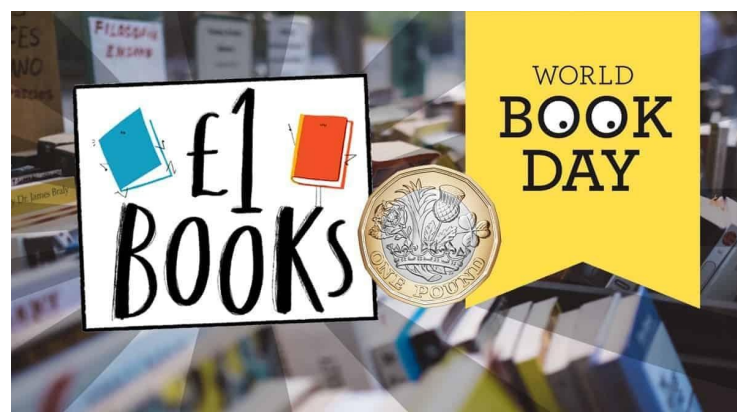
Sarah says:

'This special event is a wonderful opportunity to celebrate the joy of reading with the theme 'Read your Way!' Throughout the day, the children will have the opportunity to explore what they love about reading and what makes reading so special for them.

Among other things, the day will include:

- **Dressing up** – Children are encouraged to come to school dressed as their favourite character from a book or, if they would prefer, wearing pyjamas and with their favourite teddy bear. Please help your child to choose a costume they feel excited about.
- **Book recommendations** – We will be compiling a list of your favourite books to read together to send out after the day. Please complete the following quick survey to recommend a book you like to read with your child at home: <https://forms.office.com/e/K6qSLWU3pZ>
- **Book Swap** – Children can bring in a pre-loved book to exchange with a classmate, giving them the chance to discover a new story. Please assist them to choose a book to swap.
- **Reading Mood Boards** – We will be getting together with children in different year groups to think about what reading means to us. For this activity we will need magazines that we can cut up and use for collage. Please send in any magazines that you no longer need.
- **World Book Day Tokens** – Each child will be bringing home today a special World Book Day token that can be used to purchase a book from participating stores throughout half-term and beyond.

Thank you for your support, and we look forward to celebrating World Book Day together!



For Families



Family Liaison Officer, Libby Wilmshurst would like to invite all parents to a special parent workshop on the topic of **Exploring Behaviour Strategies**.

The workshop will take place in school on the morning of Wednesday 12 March and is the next instalment in the package of workshops we are hosting run by Kent Adult Education.

Exploring Behaviour Strategies – in person workshop

When: Wednesday 12 March 2025 between 09:30 and 11:30

Where: Slade Primary School

Booking: To sign up to this event please use the following link before the booking window shuts for this event at 23:59 on Friday 7 March <https://forms.office.com/e/ycWmCsaHpj>

We look forward to seeing many of you at the event in March.

Children's Anxiety Talk



Thankyou to everyone who came along to our parent workshop on Children's Anxiety on Wednesday afternoon. We hope you found the time interesting and informative.

We would also like to thank Debs Holliday and her team from the NHS Kent Wellbeing group who do a lot of work with children and families at school for presenting the course.

In addition to the Behaviour Strategies talk advertised above, keep an eye on posters around school and here in the newsletter for future workshops run by the NHS that may be of interest to you.

Family Learning Leader of Kent Adult Education (KAE) Andrea de Pury, has been in touch to make parents and carers aware of a Half Term Science workshop that will be running in collaboration between KAE and Tonbridge Library on Wednesday 19 February.

Andrea says, 'Places are limited, so booking is essential if you are interested in coming along, parents will need to accompany their children on the day, and enrolment can be made here: [Spectacular Science!](#)'



Forest School



Monday 24 February - Phoenix (Mrs Bowker)

Tuesday 25 February - Sphinx (Mrs Burnside)

Thursday 27 February - Pegasus (Miss Meers and Miss Elliott)

Friday 28 February - Hippogriff (Mr Louth)

Monday 3 March - Gnome (Mrs Manktelow and Mrs Stephens)

Tuesday 4 March - Sprite (Miss Ellis)

Friday 7 March - Elf (Mrs Mulhern) and Pixie (Mr Clark)

Monday 10 March - Elmer (Mrs Hitchcock)

Tuesday 11 March - Gruffalo (Mrs Pearson)

Thursday 13 March - Griffin (Mrs Lipman)

Friday 14 March - Dragon (Mrs Worley)

Monday 17 March - Wyvern (Mrs Fordyce)

Tuesday 18 March - Hydra (Mr Duffin)

Thursday 20 March - Pegasus (Miss Meers and Miss Elliott)

Friday 21 March - Hippogriff (Mr Louth)

Monday 24 March - Gnome (Mrs Manktelow and Mrs Stephens)

Tuesday 25 March - Sprite (Miss Ellis)

Thursday 27 March - Phoenix (Mrs Bowker)

Friday 28 March - Sphinx (Mrs Burnside)

Monday 31 March - Pixie (Mr Clark)

Tuesday 1 April - Elf (Mrs Mulhern)

Thursday 3 April - Gruffalo (Mrs Pearson) and Elmer (Mrs Hitchcock)



Slade Stats

Attendance

Over a school year, we are due to be open for 190 days which equates to 380 sessions.

Registration takes place at 08:50 in the morning and after lunch in the afternoon.

Attendance is affected if a pupil is not present at school for any whole session including registration.

The class with the best attendance each week will win Attendance Ted.

Punctuality

Registers are taken at 08:50. If children arrive after this time, they are registered late.

It is important that the children are at school on time every day to prevent disruption and upset to their day and for the rest of their class.

Punctuality Pup is awarded to the class with the best punctuality each week.

Our Attendance Target = 97.0%

Our Attendance This Week = 95.4%

Our Attendance This Year = 95.2%

Punctuality: Number of Late Pupils This Week: 45

Congratulations to our winners this week

We have a EYFS Double!

Attendance Ted: Gruffalo Class (98.7%)

Punctuality Pup: Elmer Class (No Late Pupils)

A super well done to Mrs Pearson, Mrs Hitchcock and everyone in Gruffalo and Elmer Classes.



Sport, Fitness and Wellbeing



Year 3 and 4 Athletics

Mrs Ball is back! It was super to have Mrs Ball back on track (albeit in a medical boot!) to accompany our team of Year 3 and 4 athletes who met at Leigh Academy Tonbridge this morning for the local Sports Partnership games for their yeargroup.

The competition consisted of a number of track and field events all within the Sports hall at Leigh Academy and we were joined by a number of other schools from Tonbridge and West Kent.



We would like to hear from any gymnasts who are currently in Year 2-6, who would like to be considered for the upcoming Tonbridge and Tunbridge Wells competition.

The competition happens at the beginning of April and will mean learning and perfecting two routines off by heart.

If you would like to be considered for this competition that we have enjoyed being part of over the last three years, please contact Wendy Ball via sportsandactivities@slade.kent.sch.uk. Wendy will be in touch with more information in the early part of Term 4.



Year 2-6 Gymnastics



Year 6 Football

Later this evening, our Year 6 footballers are back in league action as they take on Woodlands School at Longmead Stadium.

We will have a report on how all of our teams are doing in their respective leagues in the first newsletter of Term 4.

The run in to the end of the season will see lots of matches in March for the Year 5, Year 6 and Girls teams with our home games being played at the home of Tonbridge Angels. Fixtures can be found on the [online diary](#).

Sport, Fitness and Wellbeing

Our playground needs YOU!

We are in desperate need of the following items to help improve our playtime provision.

**Felt Tips / Crayons / Chalks / Drawing Paper
Good quality Lego / Board Games / Books
Tennis Balls / Large Ropes for group skipping
Foam Footballs/ Dressing Up Clothes**

If you are able to donate any of these items they would be gratefully received.

We can't thank you enough! #TeamSlade

Donation Bins will be left at our main entry and exit points at drop-off and collection times

Deacon House 07:30, 08:40, 15:15, 16:30 and 17:30

EYFS Gate and Main Playground Gate 08:40 and 15:15

on the following days:

Monday 24 February

Tuesday 25 February

Wednesday 26 February

Thursday 27 February

Friday 28 February

Alternatively, please feel free to drop off donations at anytime between 08:00 and 16:00 to the school office.

News and Events from the PTA

Thank you to everyone that attended and supported the KS2 Discos last week. As usual, Matt the DJ did us proud - the dance floor was buzzing, and children and adults alike were loving the tunes! It was such an incredible evening and we hope all the children had a fantastic time.

Looking ahead to next term it will be the turn of the KS1 children, and we'll be getting ready for a fabulous Film Night together. Plans are also afoot for some fun filled Easter celebrations....that we hope will be a little more weather proof than previous years!!

Wishing you all a wonderful half term and we hope everyone enjoys their Valentine's Day treat! Don't forget to share pictures or messages with us so we can see all the creative ideas the children come up with to raise money for their school. Caroline and Emily.



Valentine's Day

Sweets - Fundraising - Chores or Challenges

To celebrate Valentine's Day the PTA will be gifting each child in the school a tube of sweets. During half term we are asking the children to enjoy the treat and then collect or earn any loose change to refill their tube with money.

A great opportunity to get your house cleaned, or, if your children are already great at chores, why not encourage them to take on a sponsored challenge.

Some ideas might include:

Laying the table or vacuuming

Emptying the dishwasher

Helping with laundry or dusting

Washing up, preparing meals

Cleaning the car or taking out bins

Sponsored football match

Sponsored daily mile

Sponsored cycle

Reading challenge

Sponsored silence!

We hope this will be a fun way for the children to engage with our fundraising efforts for the school, but obviously there is no obligation and we hope that everyone will enjoy their Valentine's gift.

Please could all tubes be returned to their class teachers during the first week back after the half term holiday. On Friday 28th February the money will be counted and the class that has raised the most for the PTA will receive a reward from Mrs Slade.

Dairy and gluten free options will be available, but please do let us know any specific dietary requirements. We hope you have a wonderful half term holiday and look forward to seeing you all next term x

Our News: Lily and Elanor

Everyone at Slade is proud of Lily in Year 6, who again competed on behalf our school last weekend at the National Schools Equestrian Association's Arena Eventing show.

Keen readers will remember that Lily competes with her horse, Rita, and they put up another fantastic performance in incredibly foul weather.

Lily took part in the 70cm class and while she didn't get any placings this time, she did really well considering the wet conditions and the really difficult course!



Arena Eventing



Lily explained: 'Arena eventing is a little different to show jumping where the course is anywhere between 17-20 jumps and they combine a mixture of show jumps and cross country fences, I was the first to go off on the course as well, which is never easy and the rain was horrible! I am still proud of my performance and am still determined to reach this year's goal and to qualify for Hickstead for the Main Schools Championships in the summer. I still have some time to do this, so I am looking forward to riding to success with Rita again!'



Little Star, Elanor

We were delighted to be invited to Elmer Class earlier this week to watch a wonderful musical performance from Elanor, who played her violin for the rest of her classmates and a watching audience of class teacher Mrs Speirs, Mrs Greehy and of course; the newsletter!

She didn't let that put her off though, and alongside her mum, Bérengère, who came in to explain the different parts of a violin and the sounds it can make, Elanor performed a series of tunes.

The children were asked if they could recognise what was being played, and because it was played so beautifully they all guessed correctly - Twinkle, Twinkle, Little Star! Elanor told us that she could play the same tune, but in slightly different ways, to give it a fresh and interesting sound.

It really was a thrill to be there and we would like to congratulate Elanor on her lovely playing, great learning and confidence to perform in front of her friends. Thankyou also to Bérengère for bringing in the violin and telling us all about Elanor's musical journey to date.



We Are Slade: Contacts & Payments

In class

My child's class learning, class activities, lessons, homework or pastoral support; concerns about bullying and behaviour

classname@slade.kent.sch.uk

Absence

Sickness Reporting, Absence Requests and all Medical Appointments

attendance@slade.kent.sch.uk

School Office

General Enquiries and School Events

office@slade.kent.sch.uk

Wraparound

Yeti's Wraparound: Childcare Voucher questions and all General Enquiries
yetis@slade.kent.sch.uk

Session Cancellations: [Cancellation Form](#)
Late Collections: **01732 37 77 60**

Sport and Activity

Extra Curricular Activity Clubs (booking and queries) Sports Events and Representative Sports Tournaments

sportsandactivities@slade.kent.sch.uk

Slade PTA

Slade PTA

pta@slade.kent.sch.uk

Admissions

In Year and September EYFS Admissions

admissions@slade.kent.sch.uk

Finance

Childcare Vouchers, Payments for Yeti's and School Meals and School Trips and Special Lessons

finance@slade.kent.sch.uk

School Lunches

Comments and questions about school meal provision from Nourish Contract Catering

jasongibbons@nourishcc.co.uk

Family Liaison

If you would like the services of our Family Liaison Officer, Libby, or just wish to talk over a family issue in confidence

flo@slade.kent.sch.uk

01732 350354 / option 4

Complaints

For all complaints, please refer to the [Complaints Policy](#) then contact us:

slaws@slade.kent.sch.uk

GDPR

Reporting of GDPR Breaches, details of our privacy policy and for Subject Access Requests

slaws@slade.kent.sch.uk

School Dinners

School Dinners provided by Nourish Contract Catering are free to the following groups:

EYFS Classes, Year 1 Classes, Year 2 Classes, EYFS, KS1 and KS2 pupils eligible for benefits related Free School Meals

School Dinners provided to KS2 (Year 3-6) children are charged at £2.55 per meal.

Credit should be loaded onto the Meals section of your Arbor account in advance of a meal being taken.

Yeti's Wraparound Provision (Breakfast and After School Clubs)

Breakfast Club is charged at £5.00 per session After School Club is charged at £5.00 per session:

Session 1 (15:30 - 16:30), Session 2 (16:30 - 17:30)

Payment and Booking should be made via your online Arbor account.

For full information please see our website: [Breakfast and After School Clubs](#)

School Visits, Other Special Events and Swimming Lessons

These payments are all made via your Arbor account. You will receive details of the amount owed and the due date as well as information on the event via email in advance.

Payments

Diary Dates: Looking Ahead

September	October	November
		
December	January	February
		Friday 14 - Last Day of Term 3 Monday 24 - First Day of Term 4 Monday 24 - 14:30 Pegasus Class Parent Reading Workshop
March	April	May
Tuesday 4 - EYFS Trip: Godstone Farm Thursday 6 - World Book Day Friday 21 - Year 4 Trip: Mountfitchet Tuesday 25 - Parent Teacher Consultations Thursday 27 - Parent Teacher Consultations	Tuesday 1 - Summer Concert Friday 4 - Last Day of Term 4 Tuesday 22 - First Day of Term 5 Monday 28 - Year 5 Trip to Carrot Wood	Friday 2 - Year 3 Trip: Leavesden Friday 9 - Year 5 Trip: Herstmonceux Monday 12 - Thursday 15 - KS2 (Year 6) Statutory Assessment Tests Thursday 15 - Secondary School Information Evening for Year 5 parents Friday 23 - Last Day of Term 5
June	July	
Monday 2 - First Day of Term 6 Year 2 Trip: Maidstone Tuesday 17 - Open Evening Thursday 19 - Sports Day Sunday 22 to Wednesday 25 - Year 6 Residential (Kingswood, Ashford)	Thursday 3 - Next Year Transition Day Tuesday 15 - Year 6 Production Thursday 17 - Year 6 Production Friday 18 - Last Day of Term 6	

Changes and additions to the diary from last week's calendar are written in red for ease of reference

More information about these events will appear nearer the time.

Events and dates are subject to change

Additional events will be posted here throughout the year

2024/25 Term Dates