



# SLADE PRIMARY SCHOOL

## In this issue:

02: From the Headteacher

03: Diary Dates for Next Week

04: Around School

05: Around School

06: Around School

07: Green Rangers

08: Slade Stats

09: In Our Community

10: Sport, Fitness and Wellbeing

11: Nourish News

12: PTA News

13: Our News - Otilie and Francesca

14: Term Dates 2025/26

15: We Are Slade - Contacts and Payments

16: Diary Dates - Looking Ahead

*School Newsletter*

*Term 4, Issue 1*

*Friday 28 February 2025*

# Karen Slade : From the Headteacher

**Dear Parents and Carers,**

Welcome back! I hope that you all had a super half term break and are looking forward to everything that we have planned for Term 4.

There are definitely more signs of spring around school this week, especially outside of Deacon House where the bank down to the field is now a stunning display of daffodils all of which have sprung into life during the half-term break. This gorgeous sight is all thanks to the kindness and generosity of Sheila Vaux who, when she left her role at the end of the last academic year, donated a bumper batch of bulbs for us to plant and create an all year-round bank of colourful flowers to further brighten up our school. The bulbs were kindly planted by Emma and Simon Wheeler, during the Autumn, ready for the start of the spring and summer seasons. Huge thanks to Sheila for her very generous gift and to Emma and Simon for your work in bringing Sheila's vision to fruition. I'm sure you would agree that the dancing daffodils really are a delight; please do go and take a look!

Thank you to everyone who took part in the PTA 'Smarties' challenge over the February half term! It has been lovely to see the tubes bursting at the seams as they have been returned to school this week. The children have clearly been very helpful during the break and the adults have all been very generous too so thank you everyone; we are all looking forward to finding out how much your hard work has raised! Thank you also to our parent volunteers who organised this lovely gift and fundraiser for all of our children to enjoy. The final total raised and the class who raised the most funds between them will be announced next week; watch this space!

This term's year group newsletters will all be dropping into your inboxes next week; these are a great opportunity for you to find out more of what your child will be learning throughout this term and offer ways in which you can support your child too. Don't forget too that we are very much looking forward to welcoming all parents and carers into school later this month for the mid-year Parent Consultation meetings which will be take place on Tuesday 25 and Thursday 27 March in your child's classroom. This is an opportunity for you to meet with your child's class teacher to discuss the progress they are making, to hear of their targets for the coming terms and to take a look at some of their work too. The booking system for these meetings opened on Monday so do be sure to log on in the coming days to secure one of the remaining slots!

Planning ahead, this year's annual World Book Day is planned for Thursday 6<sup>th</sup> March, with all children and adults invited to participate in this annual event should they wish to do so. Thank you to the English Leaders for organising and planning this year's book filled bonanza of events and reading based activities for us all to enjoy. So, whether you plan to come dressed as your favourite book character, or wear your pyjamas to school or maybe choose to wear your own clothes and bring your favourite book along we're sure that there will be something for everyone to enjoy!

Now for some baby news and congratulations to Cassie Abisoye, Teaching Assistant, on the arrival of her baby girl Ayotola who was born safe and well earlier this week. I am sure that you all join with me in sending best wishes to Cassie and her family; we very much look forward to some cuddles with baby Ayotola and welcoming her to Slade in the not too distant future.

Finally, for those of you planning ahead and looking to book holidays, we have included the term dates for the next academic year (2025-2026) including planned INSET Days on page 14 of today's newsletter and will be online from next week.

I hope you all have a lovely weekend.

**Karen Slade**

# Diary Dates: Next Week at Slade

## Monday 3 March 2025

- Gnome Class Forest School
- National Offer Day (Secondary School Allocations) for pupils currently in Year 6. Parents will receive an offer email from Kent County Council during the day - if you have any questions, please contact your allocated school and refer to the information in the offer pack. Unfortunately, we are unable to assist with these questions. Good luck to you all though!
- [Extra Curricular Activity Clubs](#)

## Tuesday 4 March 2025

- Sprite Class Forest School
- Phoenix Class Swimming
- EYFS Educational Visit to Godstone Farm
- [Extra Curricular Activity Clubs](#)

## Wednesday 5 March 2025

- 13:00 Brain Buddies: Details known to those signed up to attend
- [Extra Curricular Activity Clubs](#)

## Thursday 6 March 2025

- World Book Day - Please see Page 5 for full details
- Pegasus Class Forest School
- Year 5 and Year 6 Hockey Tournament - Details known to participants

## Friday 7 March 2025

- Elf Class Forest School
- [Extra Curricular Activity Clubs](#)



Looking further ahead?

Our yearly planner can be found on Page 9 of today's newsletter and online via [the school website](#).

# Slade Journal: Around School



Welcome back to all of our families after what we all hope has been a relaxing and fun February Break.

We are now in the second of the Spring Terms at Slade, with plenty to look forward to including World Book Day next week (more detail on Page 5), more of our popular parent workshops (Page 6), sports events, Parent - Teacher Consultations (below) and of course the beginning of this year's educational visits starting with the EYFS trip to Godstone next Tuesday.

Term 4 ends on Friday 4 April.



We are very grateful for your amazing response to the opportunity of meeting your child's class teacher at the Spring Parent - Teacher Consultation Meetings happening on Tuesday 25 and Thursday 27 March 2025.

As the newsletter gets sent to your inbox we have a total of 355 out of the 420 appointments booked. This is 84% of the children at Slade, despite the booking window only opening on Tuesday night.

This means that the parents of the remaining 65 children who have not yet had a meeting booked for them should log on to their Arbor account and book from the advertised prompt on the screen. We have many more slots available than are required, so there should be a choice of times for you to choose. Please do book this weekend to avoid disappointment.

Sphinx Class will be beginning their weekly swimming lessons on Thursday 13 March as previously advertised to parents in Mrs Burnside's Year 4 Class.

Thankyou to everyone who has already provided consent and payment for these important lessons.

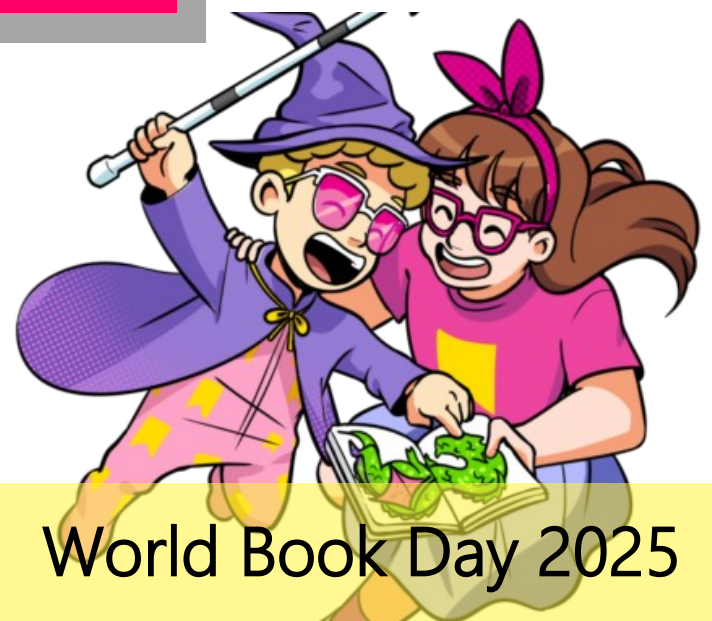
If you are yet to provide consent and/or payment, please do so via your Arbor account this weekend. The window to do so closes at 23:59 on Sunday 2 March.



# Slade Journal: Around School

Next Thursday, 6 March, is [World Book Day](#) and we are very excited to be taking part in this national event once again. Hopefully you have already managed to use your WBD Book Token handed out at the end of Term 3 to purchase one of the special books on offer at this time.

As previously advertised, this year's theme is 'Read Your Way' with the children able to have the opportunity to celebrate the joy of reading and to explore and discuss what this means to them individually.



Reading Leader at Slade, Sarah Meers, would like to remind parents of some of the activities that will be happening in school next Thursday for World Book Day:

- **Dressing up** – Children are encouraged to come to school dressed as their **favourite character from a book** or, if they would prefer, wearing **pyjamas and with their favourite teddy bear**. Please help your child to choose a costume they feel excited about.
- **Book recommendations** – We will be compiling a list of your favourite books to read together to send out after the day. Thankyou to everyone who has already taken a minute to complete our quick survey recommending a book that you like reading at home; If you haven't already, would it be possible to complete the survey through this link: <https://forms.office.com/e/K6qSLWU3pZ>
- **Book Swap** – Children are welcome to bring in a pre-loved book to exchange with a classmate, giving them the chance to discover a new story. Please assist them to choose a book to swap.

We are looking forward to another fun filled reading day on Thursday. We are very mindful that dressing up is not for every child which is why we have the options of the traditional book character outfit, pyjamas or in normal school clothes. We also know that not everyone has a new outfit to fit, and Kent Libraries are here to help with thanks to Kerry for providing this information for anyone who wishes to trade in their old outfit for new:

'Kent Libraries are this year hosting freecycle events across the county to save money and the environment by joining in with a World Book Day children's costume swap.

The events are to help local families find costumes for **FREE** to celebrate World Book Day. Do you have old costumes in good condition that are gathering dust and could find a new home? Donate preloved children's costumes and accessories (newborn to teen) to help clear out the clutter, and then pop along to your local library to snag a new-to-you costume for free!

For details of what to do and where to go take a look here (via the Kent County Council website) [Search Results | Local Kent Directory](#)

# READ YOUR WAY



# Slade Journal: Around School



Family Liaison Officer, Libby Wilmshurst would like to remind parents that we are delighted to be hosting a special parent workshop on the topic of **Exploring Behaviour Strategies**.

The workshop will take place in school on the morning of Wednesday 12 March and is the next instalment in the package of workshops we are hosting run by Kent Adult Education.

We are still a couple of booked places short of being able to hold the course, so are keen for anyone who may be interested in this subject should make sure to book a place via this form before we must make a decision on whether or not we can hold the course; booking should be made by 23:59 on Friday 7 March :

<https://forms.office.com/e/ycWmCsaHpj>

## Exploring Behaviour Strategies – in person workshop

**When:** Wednesday 12 March 2025 between 09:30 and 11:30

**Where:** Slade Primary School



Mr Duffin is looking forward to a term of very healthy competition between the Key Stage 2 classes as they go head-to-head in a Times Tables Rockstars shoot out with the aim of winning an afternoon of sports and games at the beginning of the Summer Terms.

Points do win prizes - your child can help their class just by logging on to Times Tables Rockstars even for a short time each night

Good luck to each class, we are keen to find out who wins at the end of March!



## Class Competition

Our next TTRS Competition sees each class go up against each other! The two classes with the most TTRS points by the end of Term 4 will earn a special afternoon of sports and games with Mrs Ball at the beginning of Term 5.



Good luck to each class!



# Green Rangers



Our team of KS2 Green Rangers have been incredibly busy since forming earlier this year.

Their most recent project is to set up a lunchtime craft club which they are organising alongside Tina Hall, our Forest School Teacher. To make the start up for the craft club, they would like to ask if anyone has any wool at home that they would be happy to donate.

If you are in a position to help out by donating any wool to the Green Rangers, please bring it around to the school office during any of our opening times, or via your child's bookbag marked for the Green Rangers care of the School Office. Thankyou in advance for all donations that are made that will assist making the new opportunity for children at school to learn new skills and have fun at a new club.



Miss Hall is very proud of the way that the Green Rangers have started in their roles around school. We found out more about some of the projects they have ongoing, with more to follow soon!

'We have been very busy, a group have been in charge of making sure we are all recycling what we can around the school. Labels have been provided for all the rubbish bins to make it clear what we can recycle. We went round each of the classrooms to do little presentations to all the staff and children to explain what can be recycled.

Another group have been in charge of energy saving around school. Signs have been put up around the school reminding us to switch off lights and close windows and doors to save energy. The group also went around the classrooms to do presentations to explain.

In addition to the planned Wool Craft Club, we also have started up a 'scrapheap' club – this is one lunchtime a week with some Year 1 children producing some fantastic junk modelling.

On the subject of clubs, we have also been responsible for starting a Year 2 Lunchtime Skipping Rope Club.

One of our main roles is making sure that the school is clean, we have introduced a litter picking rota – three children a week are in charge of keeping our playground and outside area free of litter. Everyone can help with this by making sure that any rubbish they need to throw away is done so securely in the correct bins.'

The Green Rangers are making a positive impact to life and the environment around the Slade - next week we will find out how you can help just by having an old pair of football boots!

# Slade Stats

## Attendance

Over a school year, we are due to be open for 190 days which equates to 380 sessions.

Registration takes place at 08:50 in the morning and after lunch in the afternoon.

Attendance is affected if a pupil is not present at school for any whole session including registration.

**The class with the best attendance each week will win Attendance Ted.**

## Punctuality

**Registers are taken at 08:50. If children arrive after this time, they are registered late.**

It is important that the children are at school on time every day to prevent disruption and upset to their day and for the rest of their class.

**Punctuality Pup is awarded to the class with the best punctuality each week.**

Our Attendance Target = 97.0%

Our Attendance This Week = 97.1%

Our Attendance This Year = 95.3%

Punctuality: Number of Late Pupils This Week: 24

**Congratulations to our winners this week, including our latest 100%ers!**

**Attendance Ted: Pegasus Class (100%)**

**Punctuality Pup: Pixie Class (No Late Pupils)**

A super well done to Miss Meers, Miss Elliott, Mr Clark and everyone in Pegasus and Pixie Classes.



# In Our Community



Regular readers will remember that we brought you news of the recent death of former pupil at Slade, Theodore Moon.

Theo's family were so taken with his lifelong love and memories of his time at primary school that they decided for all money that would have been spent on flowers for the funeral to be donated instead to Slade.

Theo's daughter, Tracy, has kindly spoken to us as we pay tribute to him today.

'Theodore Leslie Moon was born in Tonbridge on 26th December 1932.

He would have probably started at Slade School in January 1938 and would have walked about 2 miles to school from the south end of Tonbridge, where he lived.

Due to the distance, it is unlikely that he would have walked home for his lunchtime break like lots of his friends, but rather remained at school and received a school lunch.

Later in life, 'Theo' mentioned that on attending school dinners, he soon realised that if he was extra polite, the dinner ladies at Slade School would give him extra servings of custard over his puddings and pies!

He enjoyed his school days at Slade School. He made lots of friends, and the education he received was strict, firm, but fair.

WWII began in 1939 and Theo would tell the family stories about how the children watched the army build 'tank traps' on the green opposite the school (where the swings and Council Car Park are now situated), in case of enemy invasion. He said they were huge obstacles to stop tanks and troops coming up from the river nearby.

He later attended Sussex Road Secondary School, where he finished his education at 15 years of age.

On leaving school, he became a Painter/Decorator and Sign Writer. While working for a local building company and as part of his trade, he often returned to Slade School, but this time, to paint and redecorate the inside and outside of the school.

Theo passed away in December 2024, almost reaching 92 years of age. He was a wonderful caring father, grandfather and great-grandfather. He loved nothing more than seeing children playing and having fun, and his family hope that the donation to the school will in some way, be put to good use and help to purchase much needed equipment for the children, who currently attend the school.'

These are lovely memories and remind us all of the importance of hearing the life stories of our loved ones, as those precious moments will live on down and through the generations. We are so grateful to Tracy and all of Theo's family for thinking of the school at this time.

Theo's funeral was held at Tonbridge Cemetery on 29 January. Donations from friends and family reached £333.00, which is an amazing amount. We will share with them and through the newsletter to all of the Slade community, details of how we have spent that money in honour of Theo.

# Sport, Fitness and Wellbeing



CAFC For Free!

Our friends from Charlton Athletic FC have been in touch with a fantastic offer for this weekend's Women's Team match as they take on rivals London City Lionesses at The Valley Stadium. They say:  
'We would like to extend a warm invitation to you to join us for this exciting event, and the best part is that you can attend for free!

To claim your free tickets, simply use the code **Schools-12967** when booking. This is a fantastic opportunity for you to experience live football and support our talented women's team in action.'

FIXTURES SUBJECT TO CHANGE

# CHARLTON'S FIXTURES AT THE VALLEY

USE CODE: SCHOOLS-12967 | FOR FREE TICKETS



SUNDAY, MARCH 2ND | KO 2PM  
AT THE VALLEY, SE7 8BL



SCAN HERE TO BOOK  
YOUR TICKETS NOW!



# Nourish News

Today, your child will have come home with a Special 'Eat Them to Defeat Them' Mission Pack from Kirsty and her team in the School Kitchen.

The special week starts on 10 March, running until Friday 14 March, and is supported and promoted by Nourish Contract Catering with the aim of increasing the children's vegetable consumption through a fun filled week that will include collecting stickers to complete their wallchart contained within the pack.

Find out more at <https://eatthemtodefearthem.com/>



Nourish Contract Catering add that there are no changes to the meal choices during this special week which begins on Monday 10 March which will be Week 1 on their menu sheet.



Eat Them to Defeat Them is a campaign to encourage kids to eat more veg. It's award-winning and proven to make eating vegetables more fun. Look out for your Mission Pack and find out more online.

[www.EatThemToDefeatThem.com](http://www.EatThemToDefeatThem.com)



VEGPOWER

# News and Events from the PTA



The PTA would like to introduce you to Easyfundraising!

- Raise money for Slade as you shop
- No cost for you - the donations come from the retailers

We would encourage you to sign up for free via the app this weekend - if you do, we get an extra £2 donation per person!

Slade PTA signed up to easyfundraising a while ago, and in the past it has helped us raise a lot of money. But we haven't been using it to its full advantage for a while! As life gets more expensive, this is a great way for us to raise funds without additional costs for any of our families.

If you can spare 5 minutes to sign up we could receive donations from up to 8,000 retailers as we all shop online.

- Download the easyfundraising app and create an account - Search and link your account to Slade PTA, Tonbridge
  - Add the Donation Reminder to your browser - I had to enable extensions in Safari to complete the Donation Reminder download
  - As you shop the Donation Reminder will pop up when the retailer you're shopping with is part of easyfundraising and ask if you want a donation made to Slade
- Click 'Tap to get Donation'

Link below or search Easyfundraising in your App Store... email us if you'd like more info or advice:

[PTA@slade.kent.sch.uk](mailto:PTA@slade.kent.sch.uk)



<https://apps.apple.com/gb/app/easyfundraising/id915474725>



Google Play

[https://play.google.com/store/apps/details?id=com.ef.easyfundraising&hl=en\\_GB&pli=1](https://play.google.com/store/apps/details?id=com.ef.easyfundraising&hl=en_GB&pli=1)

Many thanks to everyone who has taken part in our Valentine's Day Treat Challenge.

The tubes of coins have been counted this morning with the final tally of money raised to be announced next week as the Sum Up Store will remain open for donations until 21:00 this evening.

[Please pay \[ \] to Slade School PTA](#)

Special mentions to Hallie who raised lots of money as part of the challenge picking up litter in her local community and to Thomas who was awarded his donation for super swimming in his lessons during the February Break.



# Our News: Otilie and Francesca

Many congratulations to Otilie in Year 3 who has won her first trophy in her début competition in Pétanque.

The competition was actually at the end of last year, but she is now in possession of her trophy, which has been engraved with her name as 2024 Junior Champion at the Seal Pétanque Club Boxing Day event.

Otilie told us more when she popped in to the office on Wednesday.

## Pétanque Prize



'I had a wonderful time at the Boxing Day competition. I went with my Nanna and Granddad who play pétanque lots. I was really pleased because Nanna came second place out of all of the adults in their competition!

You play pétanque by bowling your boules towards the smaller ball (the jack or cochonnet) and the person who is closest, wins!'

Otilie demonstrated to us how she threw the boule, she looked very accomplished! Congratulations to Otilie on her success, we look forward to hearing how she progresses as she attends more sessions at the club with her grandparents.

Find out more about Pétanque via the local Kent Association website: [Home | Kent Pétanque Association](#)



## Showjumping Success

Mrs Ball and everyone at Slade would like to pass on their happiness for champion showjumper, Francesca.

She attended the Duckhurst Showjumping competition last weekend and had an outstanding day.

Francesca came 5th in the 50cm class and then went on to win the 60cm class! Both of these are qualifiers for the summer championships at Hickstead.

Well done on a super weekend of action, Francesca!

## BREAKING NEWS

We are delighted to report that following results from last weekend that both Francesca and Lily who represent Slade in the National Schools Equestrian Association competitions have now qualified for the National Schools Final to be held at the world famous Hickstead venue in West Sussex.



# Slade Journal: Around School



It will be a year of change at Slade, however we are pleased to have been able to finalise and publish the term dates for the school year 2025/26.

The school year consists of 190 days split into 380 sessions (Morning and Afternoon).

We use the standard Kent County Council calendar for Term Dates, adding in the five INSET Staff Training Days.

The dates listed below are all inclusive

## Term 1

**First Day: Wednesday 3 September 2025**

**Last Day: Friday 17 October 2025**

**October Break:**

**Monday 20 October - Friday 24 October**

## Term 2

**First Day: Monday 27 October 2025**

**Last Day: Friday 19 December 2025**

**Christmas and New Year Holiday:**

**Monday 22 December - Monday 5 January**

## Term 3

**First Day: Tuesday 6 January 2026**

**Last Day: Friday 13 January 2026**

**February Break:**

**Monday 16 February - Friday 20 February**

## Term 4

**First Day: Monday 23 February 2026**

**Last Day: Thursday 2 April 2026**

**Easter and Early Summer Holiday:**

**Friday 3 April - Friday 17 April**

## Term 5

**First Day: Monday 20 April 2026**

**National Holiday: Monday 4 May**

**Last Day: Friday 22 May 2026**

**Summer Terms Break:**

**Monday 25 May - Friday 29 May**

## Term 6

**First Day: Monday 1 June 2026**

**Last Day: Friday 17 July 2026**

**Summer Holiday begins: Monday 20 July**

The school year starts on 1 September.

Slade have allocated **Monday 1 September and Tuesday 2 September 2025** as Staff (INSET) Days.

Other INSET Days are on **Monday 5 January 2026, Monday 20 July 2026 and Tuesday 21 July 2026.**

# We Are Slade: Contacts & Payments

In class

My child's class learning, class activities, lessons, homework or pastoral support; concerns about bullying and behaviour

[classname@slade.kent.sch.uk](mailto:classname@slade.kent.sch.uk)

Absence

Sickness Reporting, Absence Requests and all Medical Appointments

[attendance@slade.kent.sch.uk](mailto:attendance@slade.kent.sch.uk)

School Office

General Enquiries and School Events

[office@slade.kent.sch.uk](mailto:office@slade.kent.sch.uk)

Wraparound

Yeti's Wraparound: Childcare Voucher questions and all General Enquiries  
[yetis@slade.kent.sch.uk](mailto:yetis@slade.kent.sch.uk)

Session Cancellations: [Cancellation Form](#)  
Late Collections: **01732 37 77 60**

Sport and Activity

Extra Curricular Activity Clubs (booking and queries) Sports Events and Representative Sports Tournaments

[sportsandactivities@slade.kent.sch.uk](mailto:sportsandactivities@slade.kent.sch.uk)

Slade PTA

Slade PTA

[pta@slade.kent.sch.uk](mailto:pta@slade.kent.sch.uk)

Admissions

In Year and September EYFS Admissions

[admissions@slade.kent.sch.uk](mailto:admissions@slade.kent.sch.uk)

Finance

Childcare Vouchers, Payments for Yeti's and School Meals and School Trips and Special Lessons

[finance@slade.kent.sch.uk](mailto:finance@slade.kent.sch.uk)

School Lunches

Comments and questions about school meal provision from Nourish Contract Catering

[jasongibbons@nourishcc.co.uk](mailto:jasongibbons@nourishcc.co.uk)

Family Liaison

If you would like the services of our Family Liaison Officer, Libby, or just wish to talk over a family issue in confidence

[flo@slade.kent.sch.uk](mailto:flo@slade.kent.sch.uk)

**01732 350354 / option 4**

Complaints

For all complaints, please refer to the [Complaints Policy](#) then contact us:

[slaws@slade.kent.sch.uk](mailto:slaws@slade.kent.sch.uk)

GDPR

Reporting of GDPR Breaches, details of our privacy policy and for Subject Access Requests

[slaws@slade.kent.sch.uk](mailto:slaws@slade.kent.sch.uk)

## School Dinners

School Dinners provided by Nourish Contract Catering are free to the following groups:

EYFS Classes, Year 1 Classes, Year 2 Classes, EYFS, KS1 and KS2 pupils eligible for benefits related Free School Meals

School Dinners provided to KS2 (Year 3-6) children are charged at £2.55 per meal.

Credit should be loaded onto the Meals section of your Arbor account in advance of a meal being taken.

## Yeti's Wraparound Provision (Breakfast and After School Clubs)

Breakfast Club is charged at £5.00 per session After School Club is charged at £5.00 per session:

Session 1 (15:30 - 16:30), Session 2 (16:30 - 17:30)

Payment and Booking should be made via your online Arbor account.

For full information please see our website: [Breakfast and After School Clubs](#)

## School Visits, Other Special Events and Swimming Lessons

These payments are all made via your Arbor account. You will receive details of the amount owed and the due date as well as information on the event via email in advance.

Payments

# Diary Dates: Looking Ahead

September	October	November
		
December	January	February
		
March	April	May
Tuesday 4 - EYFS Trip: Godstone Farm Thursday 6 - World Book Day Friday 21 - Year 4 Trip: Mountfitchet Tuesday 25 - Parent Teacher Consultations Thursday 27 - Parent Teacher Consultations	Tuesday 1 - Summer Concert Friday 4 - Last Day of Term 4 Tuesday 22 - First Day of Term 5 Monday 28 - Year 5 Trip to Carrot Wood	Friday 2 - Year 3 Trip: Leavesden Friday 9 - Year 5 Trip: Herstmonceux Monday 12 - Thursday 15 - KS2 (Year 6) Statutory Assessment Tests Thursday 15 - Secondary School Information Evening for Year 5 parents Friday 23 - Last Day of Term 5
June	July	
Monday 2 - First Day of Term 6 Year 2 Trip: Maidstone Tuesday 17 - Open Evening Thursday 19 - Sports Day Sunday 22 to Wednesday 25 - Year 6 Residential (Kingswood, Ashford)	Thursday 3 - Next Year Transition Day Tuesday 15 - Year 6 Production Thursday 17 - Year 6 Production Friday 18 - Last Day of Term 6	

More information about these events will appear nearer the time.

Events and dates are subject to change

Additional events will be posted here throughout the year

2024/25 Term Dates

*Changes and additions to the diary from last week's calendar are written in red for ease of reference*