



SLADE PRIMARY SCHOOL

In this issue:

02: From the Headteacher

03: Diary Dates for Next Week

04: Around School

05: Around School

06: Slade Stats

07: Sport, Fitness and Wellbeing

08: Focus on Year 2

09: Focus on Year 6

10: In Our Community

11: PTA News

12: PTA News

13: Summer Fete

14: Sphinx's Secret Garden

15: We Are Slade - Contacts and Payments

16: Diary Dates - Looking Ahead

School Newsletter

Term 6, Issue 2

Friday 13 June 2025

Karen Slade : From the Headteacher

Dear Parents and Carers,

The second week of our final term has been another eclectic mix of learning opportunities here at Slade so do read on to find out more of what has been happening across the school this week!

A huge well done to all those children in Years 1 and 2 this week who, unbeknown to them, have taken their statutory Phonics Screening Check. And to our Year 4 pupils who sat their statutory Multiplication Tables Check too. All children involved across these year groups have been amazing and should be very proud of themselves and their achievements!

As mentioned in an earlier newsletter, we have been busy working on the class and staffing arrangements for September. Therefore, a letter will be sent out on Monday outlining any changes, notifying you who your child's class teacher will be and informing you of some of the planned transition arrangements for the term. Information regarding classes for next year will also be shared with your children on Monday afternoon. If you have any queries regarding arrangements for September then please talk to your child's current class teacher in the first instance.

We are very much looking forward to welcoming parents and carers into school next week for two of our main annual events. Firstly, on Tuesday we are holding our Open Evening between 5 and 7pm. This is a time for you to come into school to look with your child at their books, work and classroom displays. It is also an opportunity for your child to show you their new classroom, introduce you to their new class teacher and see the range of learning across the school. We look forward to seeing you there!

Then on Thursday we welcome you back into school and down onto the field for our Sports Day events, with our younger children competing in the morning followed by the older ones in the afternoon. Further details of Sports Day arrangements were sent out in a separate letter earlier this week and are summarised further on in this newsletter. I look forward to seeing you there!

A reminder that we do endeavour to return all items of lost property to their rightful owners wherever possible so please do help us by ensuring that all items of your child's clothing and their belongings are clearly and permanently named. All lost property items will be displayed at both Sports Day and Open Evening events with any unnamed and unclaimed items once again making their way to the PTA uniform store for re-sale. In the meantime, please do help yourself to any of the unnamed items that are on display and take them home with you for your children to wear.

I would love to encourage you, if you are able, to get involved with helping out at this year's PTA Summer Fayre which is planned for the afternoon of Saturday 21st June out on the school field. This event doesn't just happen by chance and relies on all in the school community to get involved and play their part, particularly with the running of stalls. It would be so lovely to see lots of you there showing your support for our fabulous PTA committee and helping out if you can so please do get in touch with the team if this is an event where you can lend a hand. In addition, it's been lovely to see the estate agent boards popping up and appearing around Tonbridge this week advertising our event so thank you everyone who has volunteered to have a board outside their home!

Finally, from September 2025 Yetis After School Club will now be extending its hours and will be remaining open until 6pm. Further details regarding the opening times for next year, the prices for these sessions and how to book will be shared in a separate communication in the coming weeks.

Have a lovely weekend everyone.

Karen Slade

Diary Dates: Next Week at Slade

Monday 16 June 2025

- Wyvern Class Heroes Hike
- [Extra Curricular Activity Clubs](#)

Tuesday 17 June 2025

- Hydra Class Heroes Hike
- Pegasus Class Swimming
- Open Evening for Current Parents . See Page 5
- **No Extra Curricular Clubs After School. See Page 5**

Wednesday 18 June 2025

- Elmer Class Forest School
- Gruffalo Class Forest School
- [Extra Curricular Activity Clubs](#)

Thursday 19 June 2025

- Sports Day. See Page 5
- [Extra Curricular Activity Clubs](#)

Friday 20 June 2025

- Year 6 Cooking at Tonbridge School
- [Extra Curricular Activity Clubs](#)

Saturday 21 June 2025

12:00- 15:00 - PTA Summer Fete. Entry via Hawden Road Gate.

Full preview on page 11-14

Sunday 22 June - Wednesday 25 June 2025

Year 6 Residential Activity Week at Kingswood, Ashford

Year 6 parents should refer to previous information for timings.



Looking further ahead?

Our yearly planner can be found on Page 14 of today's newsletter and online via [the school website](#).

Slade Journal: Around School

DEADLINE DAY

Sunday 15 June

Two important deadlines happen this weekend that we would want parents to be aware of so you or your child will not miss out.

You have until 23:59 on Sunday to:

- Order class group photographs for free delivery
- Submit an application form for your child to receive a free Kent County Council Library Card

Details on how to order class group photographs appear on the proof card brought home last week, and in last week's newsletter - the website you need to use is **Portrait Days**. This deadline is to receive free delivery to school; you are still able to make orders after Sunday, but you will need to pay a home delivery charge.

We are excited to be taking all of the children at school to the local Kent County Council Library in Tonbridge in town. Every parent will have been sent an email this week stating the time and date that their child's class will be walking over to the library for their session.

If your child does not have a library card and you would like them to have one, which will greatly enhance their trip, you are reminded that the form we attached to the trip email must be completed and submitted to office@slade.kent.sch.uk before the end of the weekend. If you have any problems, we will have a small number of paper forms in the office for completion on Monday morning - but to ensure that all of the cards requested can be processed by the library, we only have until 10:00 on Monday to let them have the details - so we are unable to accept any card applications after registration time on Monday.

We have been very lucky to be joined this week by Shamiksha, a Year 10 pupil at Tonbridge Grammar School, who has been carrying out a work experience placement at Slade this week.

Shamiksha has been based in both of our EYFS Classes, Elmer and Gruffalo and has been helping with the children's learning and play throughout the week.

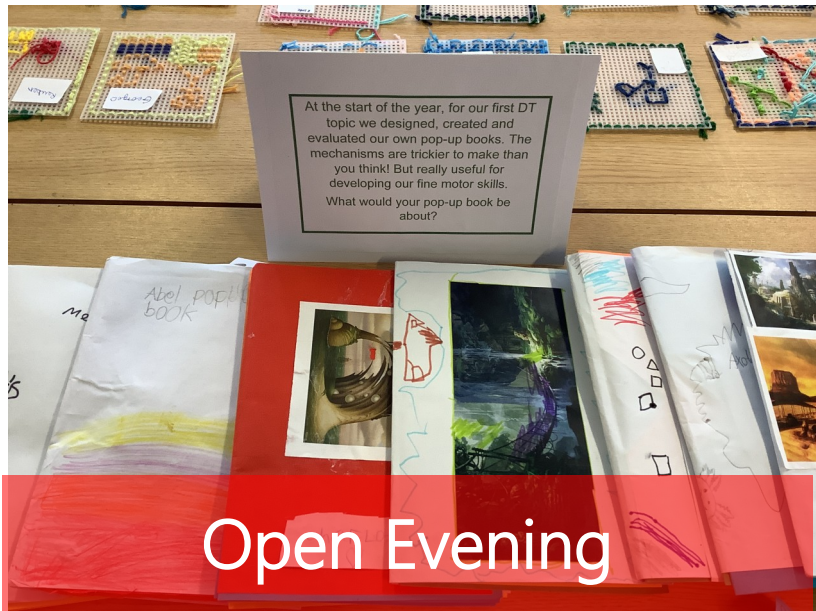


Our youngest learners have enjoyed reading, speaking, playing and painting with Shamiksha all week!

Mrs Pearson has been particularly impressed with Shamiksha's ability, her attitude to work and her confidence in working with the children and adults in the room. She said, 'Shamiksha has been a pleasure to work with this week, she should be very proud of everything she has done with our children and how she has taken to the job in and out of the classroom so smoothly. We wish her much success in whatever she chooses to do after her GCSE examinations next year.'

Slade Journal: Around School

We are all looking forward to welcoming you all to school for one of our busiest, and favourite weeks of the whole year.



Tuesday night sees the class teachers host our annual Open Evening for our current families to have a wander, visit the classroom and see their books as well as seeing the equipment and resources they use to aid their learning.

The teachers and other staff will be around for an informal chat as well.

Join us on Tuesday between 17:00 and 19:00, with entry via the main playground gate.

A reminder that there will be no after school activity clubs running on Tuesday 17 June. Individual club providers will contact parents of children involved with details of refunds or rearranged club dates.

Then on Thursday 19 June, it is the School Sports Day.

Parents, family and friends are invited to watch the children as they compete to become Class of the Yeargroup!

They will be taking part in throwing, jumping, crawling and running events and there will be refreshments, programmes and Summer Fete wristbands for sale from the PTA, so do bring some loose change!



Supporters of children in EYFS, Key Stage 1 and Year 3 should arrive at 09:00 for a 09:15 start (expected finish by 12 midday). If you are coming to cheer for children in the rest of Key Stage 2 (Year 4,5 and 6) then you should be here at 13:15 for a 13:30 start, expected finish at 15:15.

Entry is via the Hawden Road Gate, which leads on to the school field. This gate is between two residential properties - please respect our neighbours by not smoking in the driveway at anytime and please do not lean against the neighbours property including fences and do not drop any litter on the way in or out of the event. Your co-operation is much appreciated by the school and our neighbours.



Then, to complete the week we have the PTA Summer Fete on Saturday 21 June.

More details appear later in today's newsletter as the whole school gears up for Fete Day between Midday and 15:00. Entry is again via the Hawden Road Gate.

The PTA Summer Fete is proudly sponsored by Jack Nutley Estate Agent. You can see houses, buy houses and sell houses by clicking on the website. : [Jack Nutley](#).

Slade Stats

Attendance

Over a school year, we are due to be open for 190 days which equates to 380 sessions.

Registration takes place at 08:50 in the morning and after lunch in the afternoon.

Attendance is affected if a pupil is not present at school for any whole session including registration.

The class with the best attendance each week will win Attendance Ted.

Punctuality

Registers are taken at 08:50. If children arrive after this time, they are registered late.

It is important that the children are at school on time every day to prevent disruption and upset to their day and for the rest of their class.

Punctuality Pup is awarded to the class with the best punctuality each week.

Our Attendance Target = 97.0%

Our Attendance This Week = 95.1%

Our Attendance This Year = 95.4%

Punctuality: Number of Late Pupils This Week: 27

Hip Hip Horary!

Another double success this week, this time in Year 3 as Attendance Ted and Punctuality Pup make their return to Mr Louth's Hippogriff Class. Well done to Hippogriff, for being in school, on time ready to learn every day this week!

Attendance Ted

Hippogriff Class (Year 3) 99.0% attendance this week

Punctuality Pup

Hippogriff Class (Year 3) No late marks



Sport, Fitness and Wellbeing



Last weekend, the team from Tonbridge and Malling District Schools FA joined others from across Europe to compete in the Barcelona Girls Cup.

The Barcelona is an international youth football tournament for girls, held in Salou and Cambrils area in the south of Barcelona.

The annual tournament is an exceptional opportunity for the players to showcase their skills and represent their school district in a positive manner, whilst having fun playing the sport they love with new challenges and experiences.

Harriet wrote a report of the tournament which in Harriet's age group included teams from England, Ireland and Catalonia for the newsletter:

'Last weekend I went to Barcelona and played in a football tournament. We played against some very tough sides, but on Saturday we won our group and did not concede any goals and I scored 11 goals. On Sunday, we played an unbelievable Swindon Town Academy and we unfortunately lost 4:0, so we went into the 3rd and 4th play off which we won 4:1 against St Mochta's from Clonsilla in Dublin. This meant we finished 3rd against twenty teams in the whole tournament. As you can see also from my photograph (right) I also became the top scorer in the tournament with 14 goals!'

Congratulations to Harriet and all of the Tonbridge and Malling team for an amazing tournament success. Harriet was very modest when describing her achievements - 14 goals came in just 5 games with the only other girl to reach double figures being Daisy Williams from Swindon who scored 11.

The tournament was won by FC Evolution who beat Swindon Town on penalties in the final.

In their group phase matches Tonbridge and Malling won matches against FC La Roja (7:0), Ardmore Rovers (4:0) and CD Rjudoms (6:0).



Focus on Year 2



Year 2 have spent today at Kent Life on the banks of the Medway in Maidstone.

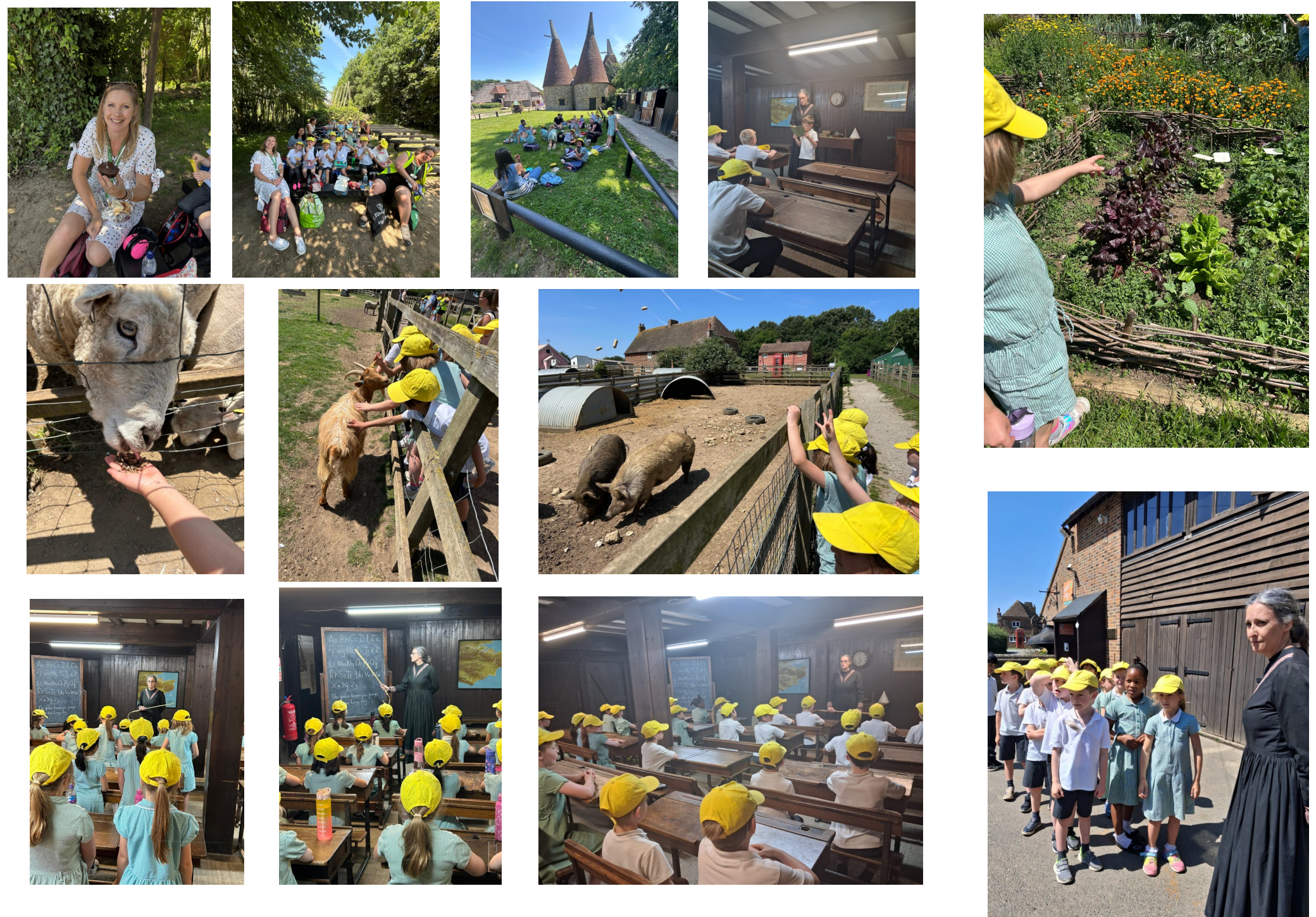
They have been taking their educational visit which has linked in with the subjects that Gnome and Sprite Class have been learning in at school this year. As part of their Geography learning, the Year 2 children have been finding out about food: where it is grown and how it gets to the supermarket and subsequently, their tummies!

In History, Mrs Stephens, Miss Manktelow and Miss Ellis have been teaching about schools from the past - and in particular, what a school would have looked like in rural Kent during the Victorian era.

The day has been a lot of fun as these subjects were brought to life by the team at the Kent Life attraction. Firstly, the children found out about food in a Farm to Fork workshop, which looked at how and where different foods were grown or raised before finding their way down the chain to a shop, restaurant or supermarket.

After a play in the play area and some time with the animals, the children were transported back in time - to the 1840's in fact, to a schoolroom from the Victorian era.

They were able to quickly see how different school life is now when compared to then - fortunately, they agreed that they much prefer to be taught by Mrs Stephens, Miss Manktelow and Miss Ellis! The classes had an extra treat for Miss Manktelow, who enjoyed her birthday with the yeargroup today!



Focus on Year 6



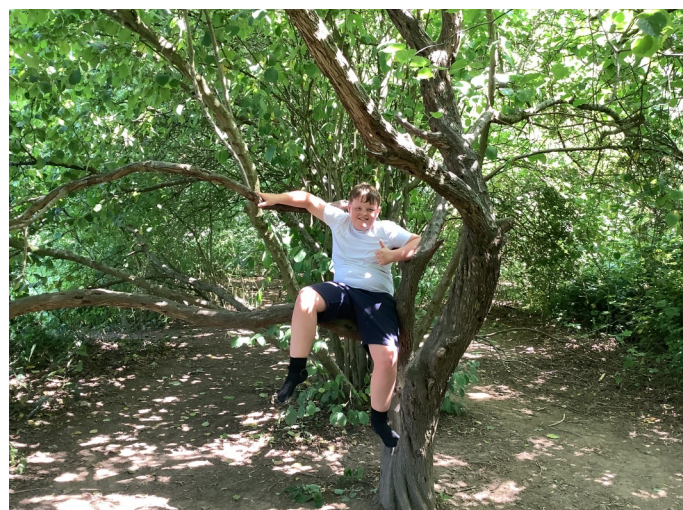
Today, Year 6 enjoyed a Health and Wellbeing Day, focused on preparing for the exciting transition to secondary school.

The day began with a visit from our local Police Community Support Officer, who spoke about the move to secondary school and shared valuable advice and reassurance.

Pupils then explored self-affirmation, writing positive statements like *"I am kind"*. They reflected on their emotions using a mood battery, identifying what lifts their spirits and what might bring them down.

Next, they created inspiring vision boards to set personal goals for their first year in secondary school — full of dreams, intentions, and motivation.

The afternoon was all about mindful movement and connection with nature. Pupils took part in yoga with Miss Garrett, went barefoot walking through the forest with Miss Hall, enjoyed breathing exercises with Mrs Worley, and ended with the calming activity of cloud watching!



In Our Community

We are pleased to share with all of our families, a letter sent this week by the Chief Executive of Tonbridge and Malling Council, Damien Roberts (right).

Mr Roberts has written about a consultation being run by the council which will affect our local area.



We encourage families and friends to take a look at the information that has been provided by Tonbridge and Malling Council and to take part in the consultation which forms a part of a review of community governance.

Mr Roberts says:

‘I wanted to let you know that Tonbridge and Malling Borough Council has today opened a six-week consultation, as part of a Community Governance Review, into whether Tonbridge should have a Town Council. The consultation runs until 5pm on Monday 14 July 2025.

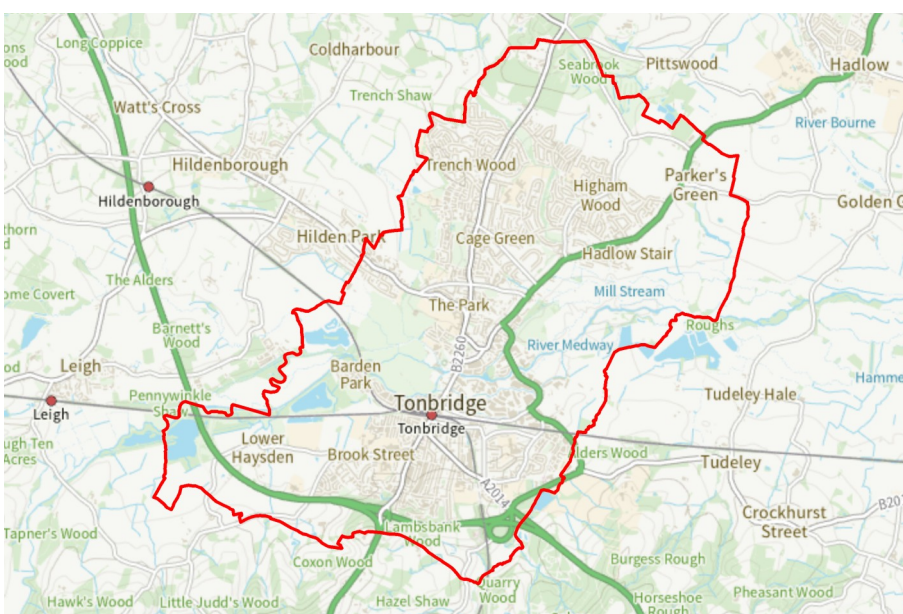
As a valued stakeholder in Tonbridge or neighbouring areas, I wanted to let you know about this consultation and invite you to express your view on this important question. I would also be grateful for your help in publicising the review via any of your relevant networks and communication channels.

All households in the local Tonbridge area will be receiving a leaflet about the consultation. We have an on-line [response form](#) on our website alongside [dedicated pages](#) providing background information and Q&As.

I hope you are able to take part in the consultation and I look forward to sharing the results with you in due course. Thank you in advance and with kind regards,

Damian.

Damian Roberts
Chief Executive
Tonbridge and Malling Borough Council’



PTA News



SLADE SUMMER FETE

Date : SATURDAY 21 JUNE (that's one week away!)

Time : 12 Midday - 3:00pm

Entry :

Via the HAWDEN ROAD GATE

Sponsored by : Jack Nutley Estate Agent

[Home - Jack Nutley](#)

Skip the Queues.....

Inflatables Wristbands; Fun Cards & Barrow of Booze Raffle Tickets on sale ahead of Fete Day!

When: Sports Day & at pick up on Friday 20th June

What's on Sale: Wristbands for the 60ft Inflatable Obstacle Course and under 5's Bouncy Castle will give you unlimited bouncing at the Fete.

£6.50 for all day bouncing along the Inflatable Obstacle Course; £5 for the Activity Bouncy Castle.

Raffle tickets for the fabulous Barrow of Booze and Fun Cards will also be on sale to enable cash free payments on the day.

Come and find us and beat the queues on the day!



Our competition this year will be **Through Your Lens:** a chance for the children to grab any device that will take a photograph and head out into their garden, to the park, onto their balcony, or just get up close to their favourite plants or flowers, and show us what they love most about being outdoors.

They can print and bring their best photo to the school Fete, or if you would like us to print the picture off, please email it to office@slade.kent.sch.uk.

Each entry will be in with a chance of winning fun cards worth £5 to spend on the day.

If you ask us to print out a photograph, please let us know if you would like it to be returned, or if you would like for us to pass it directly to the PTA.

PTA News



Delivering Plant Donations...

For all of our fabulous green-fingered parents and carers who have been busy growing donations at home for the plant stall, please can all plants be brought in to the school office, who will pass them to the PTA on Friday 20th June, or directly to Caroline or Emily before the Fete starts on the morning of Saturday 21st June.

You'll find us on the field, so please come to the Hawden Road entrance if easier.

You can find out more about the plant stall, part of the Grow Your Own theme of the fete on page 14 of today's newsletter.



MARK ONE ENTERTAINMENTS making parties happen

The PTA events would not be as enjoyable and as well presented without the superb input from Matt Sargent and Mark Longhurst, our amazing DJ's!

Matt and Mark donate so much time, money and energy to our PTA events throughout the year - they really are amazing and so incredibly generous and they make a big difference to our main fundraising events and it wouldn't be a Fete, Disco or Fireworks night without them!!

At the Summer Fete on 21 June, they'll both be with us in their newly renovated shelter on the field, keeping the music playing, introducing our show ring performances and announcing lucky raffle, competition and auction winners!

They both run local DJ businesses -- Phoenix Events and Mark One Entertainments <https://www.facebook.com/share/1CZkXkroh/> Please keep them at the top of your list if you are looking for a DJ for a party, wedding or other event and enjoy listening to their shows at the fete.

Phoenix Events

SLADE SUMMER FETE

Saturday 21 June

Slade School Field 12-3pm

What's On?

Inflatable Obstacle Course and Bouncy Castle for under 5s

Barrow of Booze Raffle

Entertainment from our Dynamic Duo, Djs Matt & Mark

Second Hand Stall & Pre-Loved Uniform

Event Arena featuring Children's Performances

Year Group Stalls with NEW games, crafts, glitter and sweet treats

Designated Quiet Zone featuring the Slade Bunnies

BBQ and Beer Tent

Silent Auction

NEW Plant Stall



CASH ON THE DAY
£5 FUN CARDS for card purchase
ASSISTANCE DOGS ONLY

JACK NUTLEY

exp^{UK}

PERSONAL ESTATE AGENT

Tonbridge Property Expert

A PROUD SPONSOR OF
SLADE SCHOOL FETE 2025



Sales



Lettings



Property Management



LET'S TALK...



07593 697 365



jacknutley.co.uk



jack.nutley@exp.uk.com

In the Event Arena on Saturday 21 June:

If your child is part of any of these groups, then they are invited to perform in the Event Arena at the PTA Summer Fete. Performers should report to the show ring on the field five minutes before the scheduled start time. They are welcome to wear their costumes, but do not have to. Cheerleaders and dance performers should ensure they have trainers on as you will not want to dance on the field in bare feet!

We look forward to seeing the performances and know that the crowds will enjoy the shows on throughout the afternoon:

12:15 - Cheerleaders with Lauren Mersh of Trinity Dance

12:30 - Year 4 - 6 Choir with Mrs Stephens

12:45 - Year 6 Dance: Great Balls of Fire

13:00 - Year 3 Dance: Mr Blue Sky

13:15 - Year 2 and 3 Choir with Mrs Ball: APT and Crocodile Rock

13:30 - Musical Theatre and Drama Club with Nancy Bishop

13:45 - Yoga with Candice Machtus

Times are subject to change and will include the presentation of the winners from the PTA photography competition between (See Page 12 on how to enter and what you could win!)

Botany plants lately?

Poppy'n to Sphinx's Secret Garden

@ Slade School's "Grow Your Own" Summer Fete

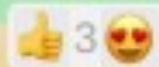
Saturday 21st June, 12-3pm

House plants, herbs, edibles & flowering plants available

Sweets, seeds or star prizes on the Wheel of Fortune

Aloe Sphinx Class parents!

The PTA thought it was thyme that we branch out and have a plant stall at the Slade summer fete this year...



Rose

Sounds bloomin' marvellous!



Cherrie Blossom

That's a peach of an idea!!!

...and they want Sphinx class to organise it



Daisy

Are you pollen our leg? It's only 6 weeks away!



Ivy

I beg your garden? They want us to grow our own?!?

Yup. Grow Your Own!



Jack Fruit

Don't be ranunculus, we can't possibly grow enough plants to sell by then!



Dan de Lyon

Can't orchids do the work?

Listen – everyone romaine calm. What do the kids say? Growth mindset and all that, we just need to bay leaf in ourselves.x



Basil

For gourd's sake



Poppy

OK, tell them to leaf it to us!



We Are Slade: Contacts & Payments

In class

My child's class learning, class activities, lessons, homework or pastoral support; concerns about bullying and behaviour

classname@slade.kent.sch.uk

Absence

Sickness Reporting, Absence Requests and all Medical Appointments

attendance@slade.kent.sch.uk

School Office

General Enquiries and School Events

office@slade.kent.sch.uk

Wraparound

Yeti's Wraparound: Childcare Voucher questions and all General Enquiries
yetis@slade.kent.sch.uk

Session Cancellations: [Cancellation Form](#)
Late Collections: **01732 37 77 60**

Sport and Activity

Extra Curricular Activity Clubs (booking and queries) Sports Events and Representative Sports Tournaments

sportsandactivities@slade.kent.sch.uk

Slade PTA

Slade PTA

pta@slade.kent.sch.uk

Admissions

In Year and September EYFS Admissions

admissions@slade.kent.sch.uk

Finance

Childcare Vouchers, Payments for Yeti's and School Meals and School Trips and Special Lessons

finance@slade.kent.sch.uk

School Lunches

Comments and questions about school meal provision from Nourish Contract Catering

jasongibbons@nourishcc.co.uk

Family Liaison

If you would like the services of our Family Liaison Officer, Libby, or just wish to talk over a family issue in confidence

flo@slade.kent.sch.uk

01732 350354 / option 4

Complaints

For all complaints, please refer to the [Complaints Policy](#) then contact us:

slaws@slade.kent.sch.uk

GDPR

Reporting of GDPR Breaches, details of our privacy policy and for Subject Access Requests

slaws@slade.kent.sch.uk

School Dinners

School Dinners provided by Nourish Contract Catering are free to the following groups:

EYFS Classes, Year 1 Classes, Year 2 Classes, EYFS, KS1 and KS2 pupils eligible for benefits related Free School Meals

School Dinners provided to KS2 (Year 3-6) children are charged at £2.55 per meal.

Credit should be loaded onto the Meals section of your Arbor account in advance of a meal being taken.

Yeti's Wraparound Provision (Breakfast and After School Clubs)

Breakfast Club is charged at £5.00 per session After School Club is charged at £5.00 per session:

Session 1 (15:30 - 16:30), Session 2 (16:30 - 17:30)

Payment and Booking should be made via your online Arbor account.

For full information please see our website: [Breakfast and After School Clubs](#)

School Visits, Other Special Events and Swimming Lessons

These payments are all made via your Arbor account. You will receive details of the amount owed and the due date as well as information on the event via email in advance.

Payments

Diary Dates: Looking Ahead

September	October	November
		
December	January	February
		
March	April	May
		
June	July	
<p>Monday 16 - Wyvern Class Heroes Hike</p> <p>Tuesday 17 - Wyvern Class Heroes Hike</p> <p>Tuesday 17 - Open Evening</p> <p>Thursday 19 - Sports Day</p> <p>Saturday 21 - PTA Summer Fete (12:00 - 15:00) See posters around school</p> <p>Sunday 22 to Wednesday 25 - Year 6 Residential (Kingswood, Ashford)</p> <p>Monday 30 - Sphinx Class Haydsen Hike</p> <p>Monday 30 - Year 6 Parent Workshop (Secondary Transition) See Posters around school</p>	<p>Tuesday 1 - Phoenix Class Haysden Hike</p> <p>Thursday 3 - Next Year Transition Day</p> <p>Tuesday 8 - Year 1 Trip: Hastings</p> <p>Tuesday 15 - Year 6 Production</p> <p>Thursday 17 - Year 6 Production</p> <p>Friday 18 - Last Day of Term 6</p>	

More information about these events will appear nearer the time.

Events and dates are subject to change

Additional events will be posted here throughout the year

2024/25 Term Dates

Changes and additions to the diary from last week's calendar are written in red for ease of reference

change