



SLADE

PRIMARY SCHOOL

Friday 19 September 2025

Term 1, Issue 2

Dear Parents and Families,

This week, pupils from Years 1 to 6 had the opportunity to nominate and vote for representatives from their classes to join our Pupil Council, experiencing democratic decision-making first-hand. We will soon be announcing the new council members and termly meetings will follow, giving pupils a voice in important school-wide decisions.

Our exploration of democracy didn't stop there though. This afternoon, a number of our Year 6 pupils stood in front of their houses to deliver speeches for the role of House Captain. I was incredibly proud of every child who put themselves forward—they spoke with such confidence and passion so a big well done! Ballot papers will be counted after school and verified and then the results will be revealed during Monday's Headteacher Assembly...

These roles are an important part of school life and over the coming weeks we will share more information with pupils about additional leadership roles they can apply for, with new opportunities continuing to evolve based on the school's priorities. In the meantime, you can find out about some of the other pupil leadership roles we currently have in school by visiting our website <https://www.slade.kent.sch.uk/page/?title=Pupil+Leadership&pid=16>.

A special well done to our youngest pupils who have now completed their first week at 'big school'! They've made a brilliant start by learning their new routines in the classroom, the lunch hall and even out on the playground. I'm sure there'll be some very tired children (and adults!) this weekend!

Finally, just a quick uniform reminder from me! Now that we're fully back into the swing of school life and most uniform orders should have arrived, we expect all children to be in the correct school uniform from next week. Please remember that trainers are not permitted, unless agreed in advance with a member of the Senior Leadership Team. If you ever need support with School Uniform (including shoes) please do not hesitate to contact Mrs Wilmshurst, our Family Liaison Officer via flo@slade.kent.sch.uk.

Wishing you all a lovely weekend. I look forward to seeing you back on the gate next week!

Viki



Monday 22 September

- Phoenix Class Forest School

Tuesday 23 September

- Sphinx Class Forest School
- Griffin Class Swimming
- Palak Shah visit to Year 6 - See Page 5

Wednesday 24 September

Thursday 25 September

- Pegasus Class Forest School
- Dragon Class Swimming
- Cake Donation Tables available in preparation for MacMillan Coffee Morning - See Page 7

Friday 26 September

- Hippogriff Class Forest School
- MacMillan Coffee Morning - See Page 7



Macmillan Coffee Morning

Looking Further Ahead?

Our yearly planner can be found on Page 17 of today's newsletter and online via [the school website](#).

WELCOME TO SLADE, BERTHA

The Slade family grew again this week when we welcomed Bertha to her new school.

She has quickly settled into Phoenix Class in Year 4 with Miss Taylor, Miss Maple and all of her new friends.

We hope you have had a super week, Bertha!

Our warm welcome is extended to all of Bertha's family, with who we look forward to a long, happy and successful relationship.



YOUR CLASS REPS

The Class Parent Reps are now a well established part of life at Slade, and we thank everyone who has volunteered for the role since its introduction back in 2021.

The first gathering of the Class Reps this year will be on Wednesday 29 October. If you are new to the role, please let us know and we will add you to the distribution list for information about meetings.

Furthermore if you are a new parent or carer to the school and do not currently belong to a class WhatsApp group, let us know and we will put you in touch with your Class Parent Rep.

We are currently looking for a parent or carer to represent Elmer Class - let us know if you are interested via office@slade.kent.sch.uk over the weekend.

GLUTEN FREE DIET?

Emma's Kitchen would like to share that they have a Gluten Free menu available for all children who require it.

If you would like a copy of the Gluten Free menu please contact Emma's Kitchen via emma@emmaskitchen.co or alex@emmaskitchen.co.



ATTENDANCE@SLADE

A reminder to parents and families to let us know about planned absences via our Attendance Email address attendance@slade.kent.sch.uk - this includes medical appointments where you have been asked to attend during school hours.

Please try to make routine appointments such as a dental check up for outside of school hours or in the holidays where at all possible.

Such messages sent to the class email or office email address may be missed, which can cause an unnecessary telephone call home.

EARRINGS IN SCHOOL

With it being the start of the new school year and an increasing number of children having had their ears pierced over the holidays, we wanted to clarify what the school policy is around the wearing of earrings, particularly during PE lessons. This is to ensure we continue to keep everyone safe during physical activity.

The [Association for Physical Education](#) (afPE) and national guidance strongly recommend that all jewellery, including earrings, should be removed before participating in Physical Education (PE) or other practical activities due to health and safety risks. Taping earrings is not advised, as it can give a false sense of security and does not eliminate the risk of injury.

Why are earrings dangerous during PE?

Wearing earrings during PE can pose several risks, including:

- Tearing of the earlobe if the earring gets caught on clothing, sports equipment, or during physical contact;
- Injury to others, particularly in team games or close-contact activities;
- Infection risk, especially if the earring is pulled or the piercing is new and not fully healed;
- Distraction or discomfort, which may interfere with participation and focus during the lesson.

To reduce these risks, pupils are expected to remove their earrings themselves before PE lessons. If they are unable to do so, they should not participate in activities where their safety, or the safety of others, may be compromised.

As a school, we understand that some children may not yet be able to take out their earrings independently. We therefore recommend that earrings are removed before your child comes to school on PE days, or when taking part in any school-led physical activity or sporting event. Unfortunately, staff are not permitted to remove earrings for pupils.

If a child is wearing earrings and is unable to remove them, they will still be involved in the lesson in a safe and appropriate way, but adaptations will be made to reduce the risk of injury. However, these adaptations may limit their ability to participate fully in all aspects of the activity.

If your child has very recently had their ears pierced and you are awaiting the end of the healing period (typically 6 weeks), we encourage you to speak to your child's class teacher about this so that together you can find a way forward so that your child does not miss out.

Moving forward, we will aim to ensure we remind all parents of this information prior to the summer holidays and you will also be able to find this information in our School Uniform Policy for future reference. A reminder all policies can be found on our school website.


Thank you for your continued support in helping us keep our children safe.

LEIGH ACADEMY HUGH CHRISTIE VISIT TO YEAR 6

On Tuesday afternoon, the Year 6 classes will receive a visit from Palak Shah, the Principal at Leigh Academy Hugh Christie. The visit will be a short talk to the children as Mr Shah describes life at the local secondary school as the families of our oldest learners make their choices in applying for the next exciting stage of their education.

A reminder that families are encouraged to attend open events at secondary schools, where this is in school time, please just let us know in advance via attendance@slade.kent.sch.uk.

FLU CLINIC VISITS SLADE IN OCTOBER

The Kent Community Health team will be joining us again on Wednesday 15 October to hold their annual flu clinic, administering the seasonal flu vaccine to children across the school. 

Parents must reply directly to the NHS team using the link below to say that they give or do not give consent for the immunisation to be administered in school.

[Flu Vaccination Consent Form](#)

The deadline for the completion of the form is 16:00 on Friday 10 October.

If you have any questions, please contact the NHS team via kchft.cyp-immunisationteam@nhs.net, Text Chat via 07700 140385 or via www.kentcht.nhs.uk/imms



FLU VACCINE

EARLY YEARS 2026 APPLICATION OPEN MORNINGS

Families with children born between 1 September 2021 and 31 August 2022 will be preparing to make their choices of primary school for intake for Reception Year in the Early Years Foundation Stage in September 2026. The application window opens on Friday 7 November (shutting in mid January) and we are hosting our open mornings to show what Slade can offer on Wednesday 29 October and Wednesday 5 November with details on our [Admissions website](#).

Places are limited and fast running out (there are 4 seats left only!) for the event on 29 October, with plenty of space still available for the open morning on Wednesday 5 November.

KEEPING UP-TO-DATE

It's that time of year again when we ask all of our families just to quickly check that we have all of your up-to-date details on Arbor.

This will include telephone numbers, home addresses, email addresses, dietary requirements and medical conditions. Most of these can be changed by logging in and amending them yourselves, of you have any problems doing so please just contact us.

Thankyou for your help in keeping our records and personal information up-to-date.

YEAR 6 BIKEABILITY

Parents of children in Year 6 who expressed an interest in taking part in this year's Bikeability programme will have received an email this week with details on how to register for the course.

Please complete the form from that email as soon as possible to allow for us to create the groups and that course leads can be allocated. Thankyou to everyone who has already completed this so far.

MACMILLAN COFFEE MORNING

If you have a spare hour next Friday, pop in after morning drop-off to enjoy coffee and a cake and catch up with old friends and new at the annual Macmillan Cancer Support Coffee Morning.

Entry this year will be via the School Office Pedestrian Gate and everyone is invited.

If you would like to donate a home baked or shop bought cake for the event, please bring it to the school office at anytime, or to the donation tables that will be at each of the main entrance gates on Thursday morning and afternoon and Friday morning.

Last year we made a terrific £390 for this wonderful charity that makes a difference to the lives of so many people. Donations can be made on the day by cash or card, or by scanning the QR code on the posters around school.



**It's time for
Coffee Morning
and you're
invited**



Come and join the fun at our annual

Macmillan Coffee Morning

Date: Friday 26th September 2025

Time: 9:15 to 10:30

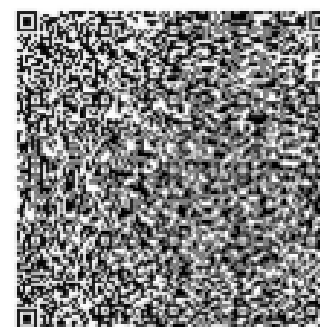
Location: Slade school hall

– enter via the office gate

Entertainment: The Slade School Choir

Can't join us?

Scan this QR code to make a donation directly to my Coffee Morning



All donations of nut-free baked goods will be very gratefully accepted on Thursday, at pick up time, or on the day.

Home baked? Please provide an ingredients list. Thank you!



SUMMER READING CHALLENGERS

Congratulations to everyone at Slade who took part in this summer's reading challenge in association with Kent Libraries and the Reading Agency.

The quest includes browsing, choosing, borrowing, reading (and hopefully enjoying) books from local libraries throughout the summer holidays. The reward was a certificate, a medal, a series of stickers, the chance to work along the reward wall in Tonbridge Library and a pack of sunflower seeds.

Thankyou to Holly, one of our EYFS parents who explained the relevance of the sunflower seeds following yesterday's morning email question. 'The Reading Challenge this year was themed around Growing a Garden, so I guess that is why they got seeds at the end; the children also has some activities throughout the summer where the children all made flowers to create a big paper garden.'

And there you have it - the Story Garden. Remember to pop along to our local Tonbridge Library when you can for more chances to read just for the love of a good book!

Also receiving points this week for answers similar to Holly's, just later in the day were Punitha and Karthik - thankyou for getting involved!

Story Garden illustrations by Dapo Adeola. Illustrations and logo © The Reading Agency 2025



TOP OF THE TREE, PIPPA

The first reading challenger from the hundreds of children from Tonbridge and the surrounding villages taking part at our local library to complete the quest and see her name reach the 6 book marker along the reward wall was Pippa in Hippogriff Class. Pippa came to speak to us this week:

'I always enjoy reading and the challenge was a lot of fun and it was fantastic to get my medal, stickers and certificate. I will be honest to say that I haven't planted the seeds and I don't even know where they are now! My favourite author is David Walliams, but I actually prefer non fiction books. I used to be very interested in the weather, and now I always look out for books about animals as I am interested in learning all about them. I also look out for the topics that we are learning about in school. At the moment, we are learning about the Bronze Age and the Stone Age so I will probably look for books about that next!'

ISAAC LOVES A LONG READ

Also having lots of fun completing the challenge was Isaac of Phoenix Class. Isaac used the fact that he had to choose six books to complete the quest as a excellent opportunity to discover some wonderful new books!

'I prefer reading long chapter books, I don't care so much about the category, I just like a long story that I can get really involved with. I find that if a book is funny and makes me laugh then I want to read it over again and again! As well as Harry Potter, my favourite series of books has been the four part series about the character Bartimaeus - he is a magician who can get up to some silly and unexpected things!'



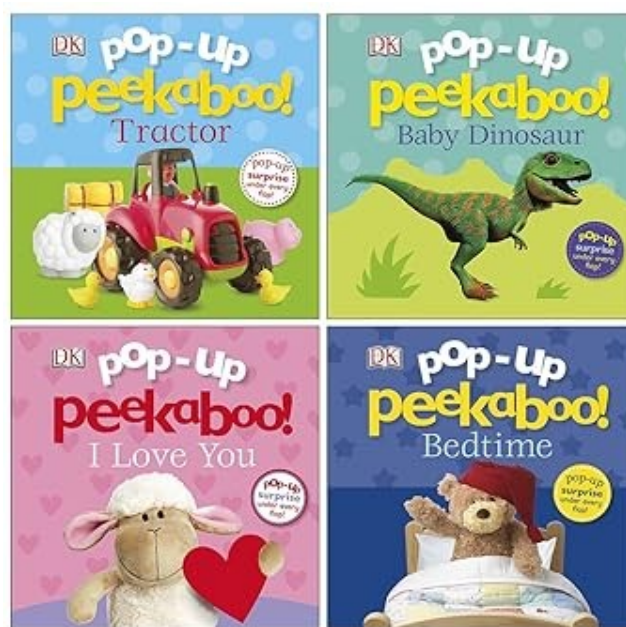
MAGNIFICENT MESSAGE FROM MARGOT

Our focus on the children from Slade who completed the Summer Reading Challenge has reached Margot. Margot enjoyed the challenge, but loves a book for many good reasons, as she explains:

'I love reading the series of books about ballerinas; I do ballet myself so it is great to imagine myself in a story! Something that always makes me happy is when mummy and daddy read to me, it is special because I can just listen to the story, look at the pictures and really understand and enjoy it, I learn lots of new words as well. When mummy and daddy read to me at bedtime it helps me to relax and I get to sleep much better.'



Also having a fun time reading in the shade of the summer sun from Slade were:



Cover star, Denis (left) in Gruffalo Class who tells us his favourite book is Peekaboo



Dulcie (above) in Elf Class had a special photograph taken at Tonbridge Library - Dulcie enjoyed reading whilst she was recovering from Chickenpox. Her favourite book is Room on the Broom.



Kristina from Sprite Class made her parents very proud with her enthusiasm. She told us all about her favourite book, Sea Quest.



Brothers Barney and Felix both celebrated receiving their certificates for completing the challenge. They had lots of favourites!



Ellie in Gnome Class really enjoyed visiting the library and being able to wander and choose from the hundreds of books available to borrow.

The Summer Reading Challenge closed this week with 2,293,189 books read across the UK! It is not too late to be featured in the newsletter, send us your pictures to get in the wrap up next week!

MAKING SLADE A GREAT PLACE TO LEARN

We are always amazed and grateful for the support given to the school from all of our parents, even when things are not as good as you would want them to be, you always want to work with us to make things better.

If you are interested in helping us be the best place to learn and to work, why not consider becoming a Parent Governor. We know that not everybody knows what becoming a governor of a school entails, so we asked Daniel, one of our most recently appointed Parent Governors to explain more:



'I became a Parent Governor at Slade just over two years ago and it's been thoroughly enjoyable and rewarding. I've had the privilege of chairing the Finance and Property Committee, working closely with fellow Governors and the Senior Leadership Team at school to give our children the best experience possible while keeping the school on a sustainable footing for future pupils. The role has given me real insight and a real voice in shaping the school's direction.

You don't need any specialist knowledge - just a commitment and a desire to represent parents. The time commitment is manageable (just a few evenings a year). If you are passionate about our children's success and want to give something back to the school community, please consider standing - your voice can make a lasting difference.'

Anyone can become a Parent Governor unless you are an elected member of the local authority or have been paid to work at the school for more than 500 hours in the last year.

For more information about the exciting role and the responsibilities that come with the position of Parent Governor just have a look at the [Governors page on the school website](#) which includes the different committees and structure of the Governing Board at Slade or [National Governors Association](#) (NGA) website. Please also feel free to talk to any of our school Governors, especially Chair Eleanor Hoyle and Parent Governor Daniel van Bregt, Co-opted Governors Scott Miller and Sahar Zaridi-Shirazee are also parents at Slade - all of them will be happy to have a chat if you see them in the playground or elsewhere.

Look out for more on becoming a Parent Governor here at Slade coming out next week; we look forward to working with you!



PTA ANNUAL GENERAL MEETING

MONDAY 29 SEPTEMBER 7:30PM - SCHOOL HALL

Every parent and carer at Slade is automatically part of the Slade Parent Teacher Association. Individuals can choose to volunteer to join the PTA Committee and take an active role in raising vital funds for the school and running fabulous community events for all our children to enjoy.

At the AGM we will vote in the Committee for the academic year ahead. Below is a guide to the main named Committee roles. Each role is very much what you make it though, and will vary depending on people's availability and the time they have to commit to the role. Sharing a role is a great way to spread the workload. We have had a combination of Vice and Co positions on the PTA for many years – more is always better than less!!

All roles are open to nominations and voting at each AGM. **If you are interested in being put forward for any of the named roles on the Committee, please message pta@slade.kent.sch.uk by 25th September** and we will plan the AGM agenda accordingly.

In addition to the named roles, you can join the Committee as a General Member. This means you have a vote on how money raised is spent, and are part of the discussions that drive the PTA.

Thank you so much to everyone that has already stepped forward to take over running an event for the year ahead. It's been wonderful to see the enthusiasm to keep so many of these going.

Looking forward to seeing you all on the 29th!
Caroline



Chair/Co-Chair

- A good leader who brings the committee together
- Should be confident, calm, friendly and approachable, but assertive and firm when needed
- Supervises and delegates tasks to ensure they are completed
- Manages the committee to ensure they work collaboratively and cohesively
- Liaises with school leadership and governor teams
- Ensures all members follow the constitution and policies
- Good communication and organisational skills
- Represents the whole committee on occasions open mornings, welcome events and more



Copyright © 2025 Parentkind

Treasurer/Co-Treasurer

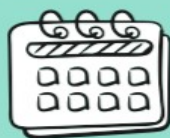
- A good head for numbers
- Good mathematical and logistical skills
- Keeps accounts in a clear and concise manner
- Follows any financial or expenses policies
- Provides accurate, up-to-date reports
- Manages the PTA bank account with other signatories
- Completes the Charity Annual Return with the Chair



Copyright © 2025 Parentkind

Vice Chair

- Supports the Chair in their job role and task list
- Should display all the qualities of a Chair
- Deputises for the Chair in their absence
- Would step into the Chair role, should it become vacant between AGMs



Copyright © 2025 Parentkind

Vice Treasurer

- Supports the Treasurer in their job role and task list
- Should display all the qualities of a Treasurer
- Deputises for the Treasurer in their absence
- Would step into the Treasurer role, should it become vacant between AGMs



Copyright © 2025 Parentkind

Secretary/Co-Secretary

- Good organisational and communication skills
- Manages the day-to-day communications of the association
- Manages the association's correspondence
- Produces minutes for each meeting
- A good listener and record keeper



Vice/Secretary

- Supports the Secretary in their job role and task list
- Should display all the qualities of a Secretary
- Deputises for the Secretary in their absence
- Would step into the Secretary role, should it become vacant between AGMs



Attendance

Over a school year, we are due to be open for 190 days which equates to 380 sessions.

Registration takes place at 08:50 in the morning and after lunch in the afternoon.

Attendance is affected if a pupil is not present at school for any whole session including registration.

Please try not to book routine medical appointments or holidays (even travel) in school time. You should notify us of any planned absence immediately via attendance@slade.kent.sch.uk

The class with the best attendance each week will win Attendance Ted.

Year 5 met Year R as Hydra and Gruffalo celebrated being top of the Attendance table this week!



Our Attendance Target = 97.0%

Our Attendance This Year = 96.5%

Our Attendance This Week = 97.0%

Attendance Ted This Week

Position	Class	Year Group	Attendance this Week
1	Gruffalo	EYFS, Mrs Pearson	100%
1	Hydra	Year 5, Mr Duffin	100%
3	Gnome	Year 2, Mrs Manktelow	99.3%
3	Phoenix	Year 4, Miss Taylor and Miss Maple	99.3%
5	Pixie	Year 1, Mr Clark	98.0%
6	Elf	Year 1, Mrs Hitchcock	97.3%
7	Pegasus	Year 3, Miss Meers and Miss Elliott	96.7%
8	Dragon	Year 6, Mrs Worley	96.3%
8	Griffin	Year 6, Mrs Fordyce	96.3%
8	Elmer	EYFS, Mrs Mulhern	96.3%
11	Sphinx	Year 4, Mrs Burnside	95.7%
12	Hippogriff	Year 3, Mr Louth	94.8%
13	Wyvern	Year 5, Miss Hall and Mrs Potter	94.7%
14	Sprite	Year 2, Miss Ellis and Mrs Curtis	94.0%

Late Children This Week = 30



Punctuality Pup This Week

Well done to all of the classes with no late pupils this week: Pixie, Phoenix and Griffin.

Congratulations to Miss Taylor, Miss Maple and all of the children in Phoenix Class for winning Punctuality Pup for the second week running (the class with highest attendance with no late marks all week)

Punctuality

Registers are taken at 08:50. If children arrive after this time, they are registered late.

It is important that the children are at school on time every day to prevent disruption and upset to their day and for the rest of their class.

Punctuality Pup is awarded to the class with the best punctuality each week.

WINNERS OF THE WEEK

TED AND PUP

Congratulations to the children in Gruffalo and Hydra Class for 100% attendance this week, and to Phoenix Class for being able to look after Punctuality Pup for another week.

Gruffalo, Hydra and Phoenix, here on time ready to learn, every day!

SUPERSTARS OF THE WEEK

Each week, the teachers nominate a pupil who has had an extra special time at school. The children are presented with a certificate from Miss Garrett and a place in the Diamond Book for EYFS and Year 1, the Golden Book in Year 2 and 3 and the Platinum Book in Year 4,5 and 6.



Year 1: Poppy and Edward



Year 2: George and Imogen

Year 3: Rose and Dorcus



Year 4: Harry, Greta and Elliott

Year 5: Tiger, Zachary and Liam

Year 6: Ruby and Praise

CELEBRATING OUR SCHOOL VALUES

Today, we say well done and thankyou to Poppy in Pixie Class. Poppy has shown kindness towards others in Pixie Class this week.

TIMES TABLES ROCKSTARS OF THE WEEK

Mr Duffin was pleased to congratulate this week's Times Tables Rockstars in Key Stage 2. Your child can be a weekly rockstar as well by completing some minutes and challenges on Times Tables Rockstars - just ask them to login at home to play - and win!

Year 3: Henry from Pegasus Class

Year 4: Alice from Sphinx Class

Year 5: Melwyn in Wyvern Class

Year 6: Drew in Griffin Class



PUPIL COUNCIL ELECTIONS

Throughout the week, children in all classes from Year 1 to Year 6 have been preparing their pitches to their classmates as they bid to become Pupil Councillors for the next year.

The role includes meeting with Mrs Potter once a term to discuss various aspects of school life as well as planning charity days. The councillors are also responsible for canvassing opinion from their class and then presenting information back to them after the meetings.

The votes happen within the classroom and the teachers will begin to feed us the results over the next few days; find out who your pupil councillors are in this spot next week!

HOUSE CAPTAIN ELECTIONS

You may have noticed your child coming home this week wearing a sticker promoting the cause of a candidate in the House Captain elections that took place this afternoon. Indeed, many children were hedging their bets and wearing the stickers promoting many candidates!

The Year 6 pupils hoping to be elected have been working hard all week to raise their profile amongst the children in the rest of the school, particularly with their electorate (those also within their house: Air, Earth, Fire or Water).

The serious stuff happened this afternoon firstly at the hustings when the candidates presented to everyone in their house, stating the reasons that they should be the one to vote for. The candidates all did a fantastic job using their best persuasive language and should be very proud of themselves in what is a high pressured environment, especially if it is the first time they have performed in front of a large number of their peers, as well as operating the big screens in the classrooms! Well done everyone!

Following the presentations, all of the children here today filed into the school hall which is the perfect stage for a polling station, and having received instruction on how the vote works and what they should do, they took their ballot paper, drew a x against their chosen candidate before placing it in the ballot box, ready for the count.

The counters are busy going through the voting slips now and the results will be fed to the Reporting Officer, Miss Garrett, who will proudly reveal the results in her Headteacher's Assembly on Monday.

Each house will elect two captains.



We are pleased to share details of courses being organised by Mind West Kent, the Mental Health charity.

There is more on the West Kent Mind website about The Migrants Table programme featured in the poster below:

<https://westkentmind.org.uk/i-want-help/creative-minds/the-migrants-table/>

Find out about the children's support that Mind can help with here:

[Children and Young People Early Intervention Service - West Kent Mind](#)

West Kent Mind programmes are supportive, wonderful ways to connect with people and learn something new.

mind West Kent

The Migrants' Table

A Creative Course for Migrants, Agency Workers & Support Staff

Thursdays | 12:30 – 2:30 PM
2 Oct – 18 Dec 2025 | 9 Jan – 26 Mar 2026
Tonbridge

Join a welcoming, supportive space to explore creativity, build confidence, and express your story. This course will focus on generating ideas personal to each participant. Expression will be invited through drawing, making, writing, painting, food, movement, improvisation.

- Build meaningful connection
- Develop skills to navigate the modern world
- Collaborate without fear or judgement
- Discover creativity, inventiveness, and improvisation skills

Register at bit.ly/migrantstable

With thanks to: COMMUNITY FUND

Crafty Fools Present

ADVENTURES IN SCIENCE



Crafty Fools Present

ADVENTURES IN SCIENCE

Join **'The Magical Mr West'** on an incredible adventure into the **world of science!**

Aided by his cartoon companion **Crowbert** and a collection of curious contraptions, Mr West demonstrates the **fundamental principles of scientific enquiry.**

Expect skills, silliness and the studious application of logic as you embark upon **'Adventures in Science!'**

Book your FREE tickets here



SATURDAY 22ND NOVEMBER, 2.30PM
 Tonbridge School Foundation Awards Programme
 invite families of Year 4 and Year 5 children
 to a FREE performance of ADVENTURES IN SCIENCE!
 To book tickets use promo code: foundation2025



emftheatre.com 01732 304241
 emforstertheatre emforstertheatre



PURE FOOTBALL ACADEMY

Additional Training Provider
 Longmead Stadium, Tonbridge
 Monday's & Friday's
 Under 6 - Under 14
 Outfield & Goalkeepers
 UEFA Licenced Coaches



REQUEST
A TRIAL



SPONSORED BY
sladefitness

September	October	November
Friday 26 - MacMillan Coffee Morning	Tuesday 2 - Harvest Festival Tuesday 14 - Parent - Teacher Consultations (16:00 - 19:00) Thursday 16 - Parent - Teacher Consultations (16:00 - 19:00) Friday 17 - Last Day of Term 1 Monday 20 - Friday 24 October - October Break Monday 27 - First Day of Term 2	Wednesday 5 - EYFS26 Open Morning

December	January	February
Tuesday 9 - EYFS Putting on a Show (09:30) Tuesday 9 - Year 1 Putting on a Show (14:00) Wednesday 10 - Year 2 Putting on a Show (09:30) Wednesday 10 - EYFS Putting on a Show (14:00) Thursday 11 - Year 1 Putting on a Show (09:30) Thursday 11 - Year 2 Putting on a Show (14:00) Friday 12 - Christmas Jumper Day, Christmas Sale and Christmas Lunch Monday 15 - Carols by Candlelight (18:30) Friday 19 - Last Day of Term 2 Monday 20 - Monday 5 January - Christmas and New Year Holiday	Tuesday 6 - First Day of Term 3 Wednesday 14 - EYFS26 Open Morning	Tuesday 10 - Online Safety Day Friday 13 - Last Day of Term 3 Monday 16 - Friday 20 - February Break Monday 23 - First Day of Term 4

March	April	May
Thursday 5 - World Book Day Tuesday 24 - Parent - Teacher Consultations (16:00 - 19:00) Thursday 26 - Parent - Teacher Consultations (16:00 - 19:00) Tuesday 31 - Spring Concert (18:30)	Thursday 2 - Last Day of Term 4 Friday 3 - Friday 17 - Easter and Early Summer Holiday Monday 20 - First Day of Term 5	Monday 4 - National Holiday Thursday 7 - Year 6 Activity Week Video Meeting Release Monday 11 - Thursday 14 - KS2 SATs Week Friday 22 - Last Day of Term 5

June	July
Monday 1 - First Day of Term 6 Monday 1 - Friday 5 - Multiplication Screening for Year 4 pupils Monday 8 - Friday 12 - Phonics Screening for Year 1 pupils Thursday 18 - Sports Day Thursday 25 - Reserve Sports Day Tuesday 30 - EYFS26 New Parents Information Meeting	Wednesday 1 - EYFS26 New Parents Information Meeting Thursday 2 - Transition Day Tuesday 7 - Open Evening (17:00 - 19:00) Monday 13 - School Reports Sent to Parents Monday 13 - Year 6 Production (18:30) Wednesday 15 - Year 6 Production (18:30) Friday 17 July - Last Day of Term 6

More information about these events will appear nearer the time.

Events and dates are subject to change

[Full Online Calendar](#)

[2025/26 Term Dates](#)

In class

My child's class learning, class activities, lessons, homework or pastoral support; concerns about bullying and behaviour

classname@slade.kent.sch.uk

Absence

Sickness Reporting, Absence Requests and all Medical Appointments

attendance@slade.kent.sch.uk

School Office

General Enquiries and School Events

office@slade.kent.sch.uk

Slade PTA

Slade PTA

pta@slade.kent.sch.uk

Wraparound

Yeti's Wraparound: Childcare Voucher questions and all General Enquiries

yetis@slade.kent.sch.uk

Sport and Activity

Extra Curricular Activity Clubs (booking and queries) Sports Events and Representative Sports Tournaments

sportsandactivities@slade.kent.sch.uk

Admissions

In Year and September EYFS Admissions

admissions@slade.kent.sch.uk

Finance

Childcare Vouchers, Payments for Yeti's and School Meals and School Trips and Special Lessons

finance@slade.kent.sch.uk

School Lunches

Comments and questions about school meal provision from Emma's Kitchen

emma@emmaskitchen.co.uk

Family Liaison

If you would like the services of our Family Liaison Officer, Libby, or just wish to talk over a family issue in confidence

flo@slade.kent.sch.uk

Complaints

For all complaints, please refer to the [Complaints Policy](#) then contact us:

slaws@slade.kent.sch.uk

GDPR

Reporting of GDPR Breaches, details of our privacy policy and for Subject Access Requests

slaws@slade.kent.sch.uk

Payments

School Dinners

School Dinners provided by Emma's Kitchen are free to the following groups:
 EYFS Classes, Year 1 Classes, Year 2 Classes, EYFS, KS1 and KS2 pupils eligible for benefits related Free School Meals
 School Dinners provided to KS2 (Year 3-6) children are charged at £2.60 per meal.
 Credit should be loaded onto the Meals section of your Arbor account in advance of a meal being taken.

Yeti's Wraparound Provision (Breakfast and After School Clubs)

Breakfast Club is charged at £5.25 per session After School Club is charged at £5.25 per session:
 Session 1 (15:30 - 16:30), Session 2 (16:30 - 17:30), Session 3 (17:30 - 18:00 Tuesday, Wednesday and Thursday Only)
 Payment and Booking should be made via your online Arbor account.
 For full information please see our website: [Breakfast and After School Clubs](#)

School Visits, Other Special Events and Swimming Lessons

These payments are all made via your Arbor account. You will receive details of the amount owed and the due date as well as information on the event via email in advance.