



SLADE

PRIMARY SCHOOL

Friday 10 October 2025

Term 1, Issue 5

Dear Parents and Families,

This term is absolutely flying by! I can hardly believe we have just one more week before the half-term break and I think we can all agree it's well deserved after such a busy and productive term!

One of my favourite parts of the week is leading my Headteacher assemblies on Monday and Tuesday afternoons. As the school is split into two, it gives me the chance to connect closely with all of our pupils. This week, we explored two of our school values in more depth: Kindness and Honesty. We discussed why these values are so important and how we can show them both in and out of school. To celebrate children who demonstrate our school values, you may have noticed our new special Value Certificates, which have been a big hit thanks to their bright rainbow design! These are awarded when a member of staff sees a child showing one of our values in action. I'm hoping every child will have the chance to collect the full set during their time at Slade and hopefully even sooner!

On Wednesday, Mrs Stephens and I were invited by Mr Shah, Headteacher at Leigh Academy Hugh Christie, to visit the school and see some of our former Slade pupils. It was wonderful to see how well they are doing and to discuss how we can continue to strengthen the transition process, ensuring all our Year 6 pupils are fully "secondary ready," as we know this can be quite a leap for some.

Yesterday, we welcomed our EYFS parents into school for their Meet the Team session and a whistle-stop tour of Monster Phonics, the programme we use to teach phonics. We really value these opportunities to share how we teach and to help you feel confident supporting your children's learning at home.

Keeping with that theme, a quick reminder about next week's Parent Consultations (for all classes except Hydra). Please make sure you've booked your appointment so teachers can update you on your child's progress and how they have settled in. I'm also still keen to hear your thoughts about the school — thank you to the 21 families who have already shared their feedback, but I'd love to hear from more of you! Paper copies of the survey will be available during the consultation evenings if you prefer to complete it that way. Alternatively, you can use the following link, which will remain open until the end of half term: <https://forms.office.com/e/5qUX1sm3Rk>

Thank you, as always, for your continued support. I look forward to seeing you at the gate next week and in school on either Tuesday or Thursday!

Warm regards,

Viki

Monday 13 October

- Phoenix Class Forest School
- 13:30 Miss Laker's Hearing Impaired Toddler Group

Tuesday 14 October

- Sphinx Class Forest School
- 16:00 - 19:00 Parent - Teacher Consultation Meetings (See page 6)

Wednesday 15 October

- NHS Community Health Children's Flu Immunisations



- Gruffalo Class Forest School

This is your first session. If you have any questions or concerns please contact the class teacher directly via gruffalo@slade.kent.sch.uk.

Thursday 16 October

- Pegasus Class Forest School
- Dragon Class Swimming
- 16:00 - 19:00 Parent - Teacher Consultation Meetings (See page 6)

Friday 17 October

- Hippogriff Class Forest School
- Last Day of Term 1

Looking Further Ahead?

Our yearly planner can be found on Page 13 of today's newsletter and online via [the school website](#).

PARKING MAD

We have received a number of complaints and concerns from both local residents and parents of children at Slade about the increase this September of irresponsible, dangerous and sometimes illegal parking at drop off and collection times.

Parents, Carers and everyone who has responsibility for bringing children into school and collecting them afterwards are reminded that the area opposite the school staff carpark where there are double yellow lines should not be used for parking or waiting at anytime.

Equally, we are disappointed to hear that cars dropping off and collecting children from school are continuing to park across the driveways of our neighbours. There is no other way to say this, but please don't! We are grateful to have very good relationships with our neighbours, and we ask for everyone to show respect to everyone in the Slade community at all times.

We are very lucky to have the facility of free parking in Upper Castle Fields parking for 30 minutes as well as street parking within park and stride distance and paid parking at the swimming pool. Please take advantage of these in order to keep our children, their families and our local community safe.

Unfortunately, we are limited to issuing reminders here in the newsletter, but if you do witness any illegal, dangerous or nuisance parking, please report it immediately to Tonbridge and Malling Council - they have an easy to complete form on their website linked to below:

[Report dangerous or nuisance parking – Tonbridge and Malling Borough Council](#)

Tonbridge and Malling Council can issue penalties for cars parked on yellow lines or in disabled bays - if a car is parked blocking a private driveway, this should be reported to Kent Police via their website:

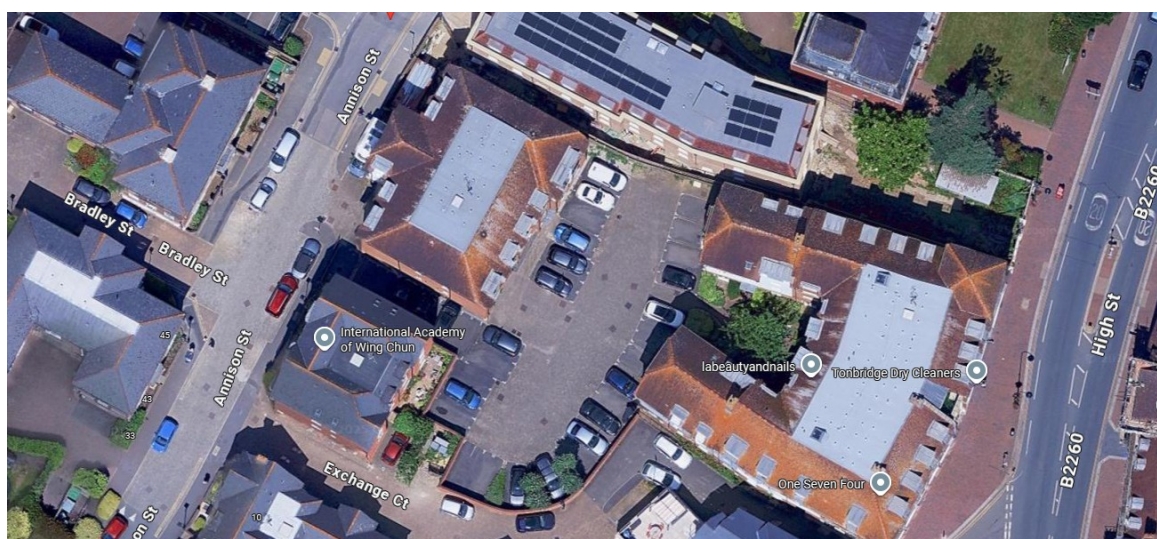
[Report antisocial behaviour | Kent Police](#)

SENSIBLE SCOOTING

Still on the local roads, we have been alerted by a concerned member of the public about children scooting and cycling at speed across a carpark that acts as a cut through between the High Street and Annison Street.

Parents should be aware that this car park is in constant use by residents and contractors. Please help to avoid any accidents by encouraging your children to ride slowly through this area and keep to the side where possible.

The route and parking area mentioned to us is pictured here:



TERM 2 ACTIVITY CLUBS

We were delighted to share earlier this week, the timetable for our range of extra curricular Activity Clubs running in Term 2.

Parents are reminded that Activity Clubs happening before, during and after school are a mix of independent paid for clubs and school run clubs which are free of charge.

Bookings and payment for independent clubs should be made directly with the club provider. Those providers are also responsible for letting you know about any changes to the schedule or cancellations.

If your child plans to attend a free school run club, they must be signed up for that club on Arbor. If they are not signed up, you will not receive details of special events related to that club, or notifications of cancellations. Please avoid that upset and inconvenience by logging onto Arbor and registering.

The full timetable can be found on our website and by clicking the link below:

[Term 2 Activity Clubs](#)

Due to staff unavailability, the following school run free clubs will not be running when stated. On these dates, please arrange to pick children up at normal time or arrange alternative childcare for those evenings:

Wednesday Night Key Stage 2 Sports Club - Wednesday 19 November

Thursday Night Year 2 Multi Skills - Thursday 13 November and Thursday 18 December

For full details on the independently run activities, please refer to the contact details on the timetable. The booking window for the school run activities opens on Arbor at 20:00 tonight.

TERM 2 YETIS

It is a busy time on Arbor, with the booking window opening at 19:00 on Sunday to secure places at Yeti's Wraparound Breakfast and After School Clubs for Term 2 which leads us to the Christmas and New Year holiday.

Places at Yeti's are priced at £5.25 per session which are

- Breakfast Club (07:30 - 08:40)
- After School Club Session 1 (15:30 - 16:30)
- After School Club Session 2 (16:30 - 17:30)

Session 1 is becoming full again, especially midweek so we encourage early booking to avoid disappointment.

Due to lack of demand during the trial period, we have withdrawn the Yeti's Session 3 on midweek days. Please see separate email sent to all parents earlier today for full information.

If you are new to Yeti's, please see our details on how to book and what to expect on the [school website](#).

PARENT GOVERNOR APPLICATIONS

Thankyou to everyone who has shown interest in our vacant parent governor positions.

The deadline for applications has now passed, with more information to be released to all parents next week.

AUTUMN PARENT - TEACHER CONSULTATIONS

We are looking forward to seeing you all in school next week on either Tuesday or Thursday evening for your Parent - Teacher Consultation meetings (unless your child is in Hydra Class when you get to wait until after the October break!)



The meetings will take place in the classrooms, if you are not sure where to go, we know that your children will be very happy to show you the way! Entry to school for these meetings will be via the Main Playground Gate.

A reminder that there are no after school Activity Clubs running on Tuesday or Thursday. This affects the following:

Tuesday

TAFC Football

DanceMode Street Dance

Gary Marshall Cricket

Sewing School Sewing

Thursday

Sewing School Sewing

Year 2 School Run Multi Skills

KS2 Drama and Musical Theatre

Yeti's Wraparound will be open as normal on both evenings.

INDIVIDUAL SCHOOL PHOTOGRAPHS

On Monday, we were delighted to hand out the viewing and ordering information cards from Matthew Walker and Portrait Days Photography.

To view your child's individual photograph simply visit the [Portrait Days website](#) and enter your access code and email address to continue. The access code can be found on the card. From this site, you will also be able to order your chosen pictures.

You will receive free delivery to school for every order made before Sunday 19 October. Orders can still be made after that date, but will attract a delivery charge.

If you have any questions, please let Tracey in the school office know via office@slade.kent.sch.uk or contact Portrait Days directly via Info@portraitdays.net quoting Slade Primary School photographs in the subject box.



AUTUMN AND WINTER JUNIOR LIBRARIANS

Each class in Key Stage 2 is invited to ask for volunteers amongst their pupils to become Junior Librarians for a seasonal term (up until Christmas, then Easter, then July).

Mrs Mills is very happy to say that the first group have put their names forward and have started helping out in the school library at lunchtimes with responsibilities including keeping the flow of books going by logging them back in after return, keeping the library tidy and logging the books out to children who have visited and chosen something that they would like to read. They are also on hand to offer advice to any of the younger children if they can not find a book or need help choosing.

Thankyou to our Librarians, who have all received their badges so they are easily identified.

Year 3: Catherine, Lily, Belle and Isobel

Year 4: Aliya, Bea, Greta and Amelia

Year 5: Harry

Year 6: Jack, Pavlik and Charlie

HARRY POTTER BOOK DAY

Yesterday was a very special day in the school library and Mrs Mills and the Junior Librarians celebrated Harry Potter Book Day.

Harry Potter Book Day is a chance for fans around the globe to celebrate J.K. Rowling's iconic series with events, parties and other festivities.

Publishers, Bloomsbury, host the special global event which is celebrated by bookshops, libraries, schools and groups of friends who love reading the books!

This year's theme is Friends and Foes.

The wizarding world is full of opportunities to make the greatest of friends, which includes our favourite trio Harry, Ron and Hermione, and face down the deadliest foes (stay away Death Eaters!)

Bloomsbury provide a kit packed full of creative and exciting activities that celebrate the deep friendships and explore the dark feuds that are in the Harry Potter books!



Attendance

Over a school year, we are due to be open for 190 days which equates to 380 sessions.

Registration takes place at 08:50 in the morning and after lunch in the afternoon.

Attendance is affected if a pupil is not present at school for any whole session including registration.

Please try not to book routine medical appointments or holidays (even travel) in school time. You should notify us of any planned absence immediately via attendance@slade.kent.sch.uk

The class with the best attendance each week will win Attendance Ted.

Our Attendance Target = 97.0%

Our Attendance This Year = 96.4%

Our Attendance This Week = 95.3%

Attendance Ted This Week

Position	Class	Year Group	Attendance this Week
1	Gruffalo	EYFS, Mrs Pearson	99.0%
2	Gnome	Year 2, Mrs Manktelow	98.0%
3	Elmer	EYFS, Mrs Mulhern	97.7%
4	Elf	Year 1, Mrs Hitchcock	97.3%
5	Hydra	Year 5, Mr Duffin	97.0%
6	Griffin	Year 6, Mrs Fordyce	96.3%
7	Sphinx	Year 4, Mrs Burnside	96.0%
8	Wyvern	Year 5, Miss Hall and Mrs Potter	95.7%
9	Hippogriff	Year 3, Mr Louth	95.3%
10	Pegasus	Year 3, Miss Meers and Miss Elliott	95.3%
11	Phoenix	Year 4, Miss Taylor and Miss Maple	95.3%
12	Pixie	Year 1, Mr Clark	94.3%
13	Sprite	Year 2, Mrs Curtis	93.0%
14	Dragon	Year 6, Mrs Worley	92.7%

Congratulations to Mrs Pearson and all of Gruffalo Class, who have won the attendance prize in the week that their mummy's and daddy's were also at school, learning about phonics.



Thankyou to everyone who came along to the EYFS talk yesterday.

Late Children This Week = 32



Punctuality Pup This Week

Well done to all of the classes with no late pupils this week: Dragon

Congratulations again to Mrs Worley and all of the children in Dragon Class. Punctuality Pup will be staying with our oldest learners this week for the third week in a row as they were the class with highest attendance (albeit in 14th position!) with no late marks.

Punctuality

Registers are taken at 08:50. If children arrive after this time, they are registered late.

It is important that the children are at school on time every day to prevent disruption and upset to their day and for the rest of their class.

Punctuality Pup is awarded to the class with the best punctuality each week.



Book your FREE workshops now

PARENT SEND INFORMATION DAY

- Get help and advice
- Learn ways to support your child
- Talk to people from schools, health, and charities

Book here



forms.office.com/e/veetxmvsSq

16th October 2025 10am - 4pm

Kent Showground, Detling, Maidstone, Kent ME14 3JF



WINNERS OF THE WEEK

Mrs Stephens and Mr Duffin led Celebration Assembly this morning and it was lovely to be able to celebrate the success of our pupils this week.

TED AND PUP

Attendance: Gruffalo Class in Early Years . Punctuality: Dragon Class in Year 6.

SUPERSTARS OF THE WEEK



Year 1: Tobias and Mila



Year 2: Bora and Tom

Year 3: Rohan and Louie



Year 4: George and Alyza

Year 5: Archie and Thomas

Year 6: Kemal and Aria

CELEBRATING OUR SCHOOL VALUES

HOUSE POINTS THIS WEEK

1. Air - 793 Points
2. Earth - 728 Points
3. Fire - 720 Points
4. Water - 578 Points

TIDY CLASSROOMS

As judged by our House Captains

Key Stage 1: Gruffalo

Key Stage 2: Hydra

WALK ON WEDNESDAY

The number of pupils walking, riding or scooting to or part of the way to school through Park and Stride.

Key Stage 1 - Elmer Class (24 out of 30)

Key Stage 2 - Dragon Class (27 out of 30)

RETURN TO THE RUGBY FIELD

Following on from last week's visit to Tonbridge Juddians by our Year 3 and 4 pupils, this week was the turn of our Year 5 and 6 rugby squad.

Max was part of the group and he told us what they got up to at the home of our local National League 1 team.

'Slade had three teams at the event for Year 5 and 6 children; our team were good enough to win all of them apart from one draw. We even played against one of the other Slade teams, say it quietly, but we won that very well!

I love playing rugby and have been playing my favourite sport for a few years now. I play at Tonbridge Juddians, so I know the field really well and my dad is a coach for our team, so I was able to use everything I know about playing rugby in our games on Wednesday.

This was a tag-rugby day so I like to use my speed to beat opponents - but I really relish the contact element of rugby when we are playing normal games.'



Juddians Men's first team are currently half way in National League 1 with 15 points from their opening 5 matches. Their upcoming fixtures include tomorrow's trip to high flying Blackheath and then next week at home on Saturday 18 October when they play Plymouth Albion, both matches kick off at 15:00.

Find out more about our local rugby club and all of the teams they operate which include ladies and mens seniors, academy teams and junior and mini teams for both girls and boys via their website:

[Tonbridge Juddians RFC](https://www.tonbridgejuddiansrfc.co.uk/)

MEET THE SHARKS AND SCORPIONS

Yesterday evening, Slade were represented by two teams at the Tonbridge and West Kent Sports Partnership Dodgeball tournament.

The evening of fun and games, designed by the partnership to focus on a favourite PE sport where the children quickly learn agility, strength and most of all teamwork as well as the most important element: Having fun!

The girls team nicknamed themselves The Slade Sharks...



And the boys team were known as the Slade Scorpions...



Thankyou to Stocks Green Primary School for hosting the event and to all of our parents for supporting the team all evening by getting them there and for your encouragement.

YEAR 6 PET MONITORS WANTED

Teaching Assistant and Wraparound Care Provider Louise Pearson is on the hunt for willing and committed pupils in Year 6 who would like to apply to become the inaugural group of Slade Pet Monitors.

Our rabbits, Ziggy and Dibbles, are valued and much loved members of the team at school and Mrs Pearson looks after them to make sure that they receive the correct level of care and that their wellbeing is maintained.

And she needs your help!

If you are in Year 6, are committed, reliable and calm (and like animals!) then you will be ideal for this job.

You will be responsible for cleaning out the rabbit home, helping at lunchtimes when the rabbits are sitting with children from younger years and general care for Ziggy and Dibbles under the supervision of Mrs Pearson.

If you would like to apply for these positions, which can be allocated on a rota basis, then please write a short application explaining why you would be suitable and pass it directly to Mrs Pearson, or to the school office for us to forward.

Applications should be with Mrs Pearson before the end of school on Wednesday 15 October. Mrs Pearson will be in touch with all successful applicants before the end of next week and you will start your volunteering early next term.

You will also receive a special bamboo made badge as modelled by Chunky, the resident cuddle bunny who lives on Mrs Parsons' desk in the school office - don't worry, he doesn't need feeding or cleaning out!





Kent **Libraries**



Halloween Costume Swap



Donate clothing and accessories in need of a new home from Monday 29 September, and pick up a new costume for free during half-term.

For more information email: tonbridgelibrary@kent.gov.uk, Telephone: 03000 41 31 31 or speak to a member of staff at Tonbridge Library



Tonbridge Library



kent.gov.uk/libraries



03000 41 31 31



September	October	November
	<p>Tuesday 14 - Parent - Teacher Consultations (16:00 - 19:00)</p> <p>Thursday 16 - Parent - Teacher Consultations (16:00 - 19:00)</p> <p>Friday 17 - Last Day of Term 1</p> <p>Monday 20 - Friday 24 October - October Break</p> <p>Monday 27 - First Day of Term 2</p> <p>Wednesday 29 - EYFS26 Open Morning</p>	<p>Wednesday 5 - EYFS26 Open Morning</p>

December	January	February
<p>Tuesday 9 - EYFS Putting on a Show (09:30)</p> <p>Tuesday 9 - Year 1 Putting on a Show (14:00)</p> <p>Wednesday 10 - Year 2 Putting on a Show (09:30)</p> <p>Wednesday 10 - EYFS Putting on a Show (14:00)</p> <p>Thursday 11 - Year 1 Putting on a Show (09:30)</p> <p>Thursday 11 - Year 2 Putting on a Show (14:00)</p> <p>Friday 12 - Christmas Jumper Day, Christmas Sale and Christmas Lunch</p> <p>Monday 15 - Carols by Candlelight (18:30)</p> <p>Friday 19 - Last Day of Term 2</p> <p>Monday 20 - Monday 5 January - Christmas and New Year Holiday</p>	<p>Tuesday 6 - First Day of Term 3</p> <p>Wednesday 14 - EYFS26 Open Morning</p>	<p>Tuesday 10 - Online Safety Day</p> <p>Friday 13 - Last Day of Term 3</p> <p>Monday 16 - Friday 20 - February Break</p> <p>Monday 23 - First Day of Term 4</p>

March	April	May
<p>Thursday 5 - World Book Day</p> <p>Tuesday 24 - Parent - Teacher Consultations (16:00 - 19:00)</p> <p>Thursday 26 - Parent - Teacher Consultations (16:00 - 19:00)</p> <p>Tuesday 31 - Spring Concert (18:30)</p>	<p>Thursday 2 - Last Day of Term 4</p> <p>Friday 3 - Friday 17 - Easter and Early Summer Holiday</p> <p>Monday 20 - First Day of Term 5</p>	<p>Monday 4 - National Holiday</p> <p>Thursday 7 - Year 6 Activity Week Video Meeting Release</p> <p>Monday 11 - Thursday 14 - KS2 SATs Week</p> <p>Friday 22 - Last Day of Term 5</p>

June	July
<p>Monday 1 - First Day of Term 6</p> <p>Monday 1 - Friday 5 - Multiplication Screening for Year 4 pupils</p> <p>Monday 8 - Friday 12 - Phonics Screening for Year 1 pupils</p> <p>Thursday 18 - Sports Day</p> <p>Thursday 25 - Reserve Sports Day</p> <p>Tuesday 30 - EYFS26 New Parents</p>	<p>Wednesday 1 - EYFS26 New Parents Information Meeting</p> <p>Thursday 2 - Transition Day</p> <p>Tuesday 7 - Open Evening (17:00 - 19:00)</p> <p>Monday 13 - School Reports Sent to Parents</p> <p>Monday 13 - Year 6 Production (18:30)</p> <p>Wednesday 15 - Year 6 Production (18:30)</p> <p>Friday 17 July - Last Day of Term 6</p>

More information about these events will appear nearer the time.

Events and dates are subject to change

[Full Online Calendar](#)
[2025/26 Term Dates](#)

In class

My child's class learning, class activities, lessons, homework or pastoral support; concerns about bullying and behaviour

classname@slade.kent.sch.uk

Absence

Sickness Reporting, Absence Requests and all Medical Appointments

attendance@slade.kent.sch.u

School Office

General Enquiries and School Events

office@slade.kent.sch.uk

Slade PTA

Slade PTA

pta@slade.kent.sch.uk

Wraparound

Yeti's Wraparound: Childcare Voucher questions and all General Enquiries

yetis@slade.kent.sch.uk

Sport and Activity

Extra Curricular Activity Clubs (booking and queries) Sports Events and Representative Sports Tournaments

sportsandactivities@slade.kent.sch.uk

Admissions

In Year and September EYFS Admissions

admissions@slade.kent.sch.uk

Finance

Childcare Vouchers, Payments for Yeti's and School Meals and School Trips and Special Lessons

finance@slade.kent.sch.uk

School Lunches

Comments and questions about school meal provision from Emma's Kitchen

emma@emmaskitchen.co

Family Liaison

If you would like the services of our Family Liaison Officer, Libby, or just wish to talk over a family issue in confidence

flo@slade.kent.sch.uk

Complaints

For all complaints, please refer to the [Complaints Policy](#) then contact us:

slaws@slade.kent.sch.uk

GDPR

Reporting of GDPR Breaches, details of our privacy policy and for Subject Access Requests

slaws@slade.kent.sch.uk

Payments

School Dinners

School Dinners provided by Emma's Kitchen are free to the following groups:
 EYFS Classes, Year 1 Classes, Year 2 Classes, EYFS, KS1 and KS2 pupils eligible for benefits related Free School Meals
 School Dinners provided to KS2 (Year 3-6) children are charged at £2.60 per meal.
 Credit should be loaded onto the Meals section of your Arbor account in advance of a meal being taken.

Yeti's Wraparound Provision (Breakfast and After School Clubs)

Breakfast Club is charged at £5.25 per session After School Club is charged at £5.25 per session:
 Session 1 (15:30 - 16:30), Session 2 (16:30 - 17:30), Session 3 (17:30 - 18:00 Tuesday, Wednesday and Thursday Only)
 Payment and Booking should be made via your online Arbor account.
 For full information please see our website: [Breakfast and After School Clubs](#)

School Visits, Other Special Events and Swimming Lessons

These payments are all made via your Arbor account. You will receive details of the amount owed and the due date as well as information on the event via email in advance.