



# SLADE

PRIMARY SCHOOL

Friday 9 January 2026

Term 3, Issue 1

Dear Parents and Families,

Welcome back to Term 3. I hope you all had a lovely Christmas and New Year, with plenty of time to spend with your families and loved ones, whether enjoying the festivities or simply having time to rest and recharge.

As Mr Laws mentioned in one of his daily updates this week, although we are now in the Spring Term, we are very much still experiencing winter conditions. The wintry weather certainly made its presence felt this week, with much excitement at Tuesday lunchtime when a small amount of snow fell! A big thank you to the staff team who supported before school each morning, helping to clear the playground and walkways so that children could enter the building safely and later in the day ensuring areas were cleared further so pupils could enjoy some time outdoors.

Despite the weather, it has been very much business as usual in school. It has been lovely to see the children settling back in so well, reconnecting with their friends and sharing their holiday news as we start the new term. This week I had the pleasure of spending time with Phoenix Class as I begin visiting each class again to read them a story. Our focus this term is on stories linked to breathing and mindfulness. We had great fun exploring yogaposes and I even introduced the class to a short meditative practice called 'Yoga Nidra' which they can try at home if they ever struggle to get to sleep! We all felt wonderfully relaxed by the end including Miss Maple! I am very much looking forward to visiting the rest of the classes over the coming weeks.

We were also delighted to welcome Joe Brennan to Slade this week. Joe is currently training to be a teacher and is completing his second placement with Elf Class. Thank you to Mrs Hitchcock and the children for making Joe feel so welcome and we hope he really enjoys his time with us.

There was no Celebration Assembly this week so instead, Mrs Stephens used the assembly slots to speak to the children about the next phase of how we are developing lunchtimes. This work aims to further improve playtime opportunities and make lunchtimes even more exciting for the children. A big thank you to our parent community for your generous donations towards resources and to our PTA for agreeing to allocate some of the funds raised to help us get this project started. Watch this space as we will be sharing more updates in future newsletters!

Finally in today's newsletter you will find the results of the parent survey carried out during the Autumn Term. This was a valuable opportunity for us to hear your views on what is working well and what could be even better. It was heartening to read so many positive comments about the school and reassuring to know that many of your suggestions already form part of the short and long term priorities for the School Leadership Team and Governing Body.

I hope you all have a wonderful weekend and that the weather doesn't impact your plans too much. I look forward to seeing you on the gate next week for the first full week of Term 3.

Warm regards,

Viki

### Monday 12 January

---

### Tuesday 13 January

---

- Hydra Class Swimming Lesson

### Wednesday 14 January

---

- Elmer Class Forest School

### Thursday 15 January

---

- Sprite Class Forest School
- Wyvern Class Swimming Lesson
- Deadline for applications to be made for primary school places starting EYFS Reception Year in September 2026. For more information: [kent.gov.uk - Primary School Places](https://kent.gov.uk/primary-school-places)

### Friday 16 January

---

- Gnome Class Forest School

### Looking Further Ahead?

---

Our yearly planner can be found on Page 15 of today's newsletter and online via [the school website](#).

## WELCOME BACK FOR TERM 3

Everyone at Slade hopes that you had a wonderful time over the recent Christmas and New Year holiday - it has been lovely seeing the children back in school this week following the two week break.



Term 3 is, the children will be pleased to know, a lot shorter than the opening two terms and runs for 29 days of which there are 25 days (5 weeks) left. The last day of Term 3 is Friday 13 February.

During the term Hydra and Wyvern Classes continue their swimming lessons on Tuesday and Thursday afternoon's. Hydra will finish their lessons on Tuesday 3 February whilst Wyvern's swimming lessons continue until the first week of Term 4 as they are a couple of weeks behind on the timetable.

## PHOENIX CLASS SWIMMING

Still in the pool and parents and carers of children in Phoenix Class in Year 4 (Miss Taylor and Miss Maple) are reminded that your batch of 8 swimming lessons begin at the end of Term 3, on Tuesday 10 February.

Consent and payment for these lessons is required. Both can be made via your Arbor account: Login and choose Clubs and then Phoenix Class Swimming. The cost of the eight lessons is £25 (£3.12/lesson).

We are unable to take children to these lessons without consent being granted via the Arbor account. The deadline for this to be given is 9 February.

## ADMINISTERING MEDICATION

'Tis the season for feeling poorly and we are always pleased to be able to help with the administering of medication during school time where necessary.



A reminder that If your child has regular, planned doses of paracetamol or other over the counter painkillers or is prescribed medication such as antibiotics by your GP or Hospital Doctor which need to be taken during school hours, please complete the form available on our website and below for ease:

[Administration of Medication at School](#)

Parents should be aware that they are responsible for collecting the used bottle and packaging once the medication is finished.

## HELPING IN OUR LIBRARY



The children continue to enjoy visiting the school library both in their English lessons and also at lunchtimes and we are very grateful for the many donations of quality second-hand books that have been made over the new year period and before.

To continue to be able to provide the opportunity for children to visit the library, we ask if any parents are able to volunteer an hour a week at a lunchtime.

During the lunchtime, you will be helping keep the library tidy and ready to use, help children find a book that they are looking for and manage the logging out of books.

The children who visit the library are always very pleased to see our regular volunteers Jessica and Charis and are thankful to them for providing support which allows the library to open.

If you would like to offer an hour a week, please contact Hannah Mills via [office@slade.kent.sch.uk](mailto:office@slade.kent.sch.uk) and we will be back in touch with more details.

## RECYCLING THE CHRISTMAS TREE?



Tina Hall and all of the users of our Forest School would like to say that if you have had a real Christmas tree over the festive period and are now looking to dispose of it, we could very much use it as part of the maintenance and activity ideas for Forest School sessions.

The trees are used to lay on the ground to soak up the damp from the rain and ice with the larger branches and ferns used by the children as part of den building or other activities.

If you have a tree that you would be happy to throw our way please just drop them off either by the Hawden Road Gate where they are collected each morning, or by the school office where we will be able to transport them to the correct place for you.

## WINTER WEATHER

This week has brought with it the first severe weather of the winter with many areas of the country including the South East experiencing a period of days where the temperatures are remaining below freezing. This weather pattern can also mean heavy snowfall and the ice that we have seen around Tonbridge this week..

We recognize that it is important for our school to remain open so that parents can continue to work and pupils can continue to learn; Slade Primary School is committed to make every effort to remain open to all pupils and to meet this aim we have robust risk assessments in place which include gritting the main walkways around school and clearing access points each day adverse weather is present.

However in unavoidable circumstances we may be forced to close. Unavoidable circumstances include those where it is no longer safe for staff or pupils to be on site or where conditions prevent staff from safely travelling to and from work. The decision to close the school is made by the Headteacher, Miss Garrett. This decision is not taken lightly and is made with the safety of our children and staff as priority. In the event that the site must close in these circumstances, parents will be notified by email and SMS. Details will also appear on the Kent Closures Website:

[Kent Closures - Kent County Council](#)

You can register to receive free updates from the Kent Closures website here:

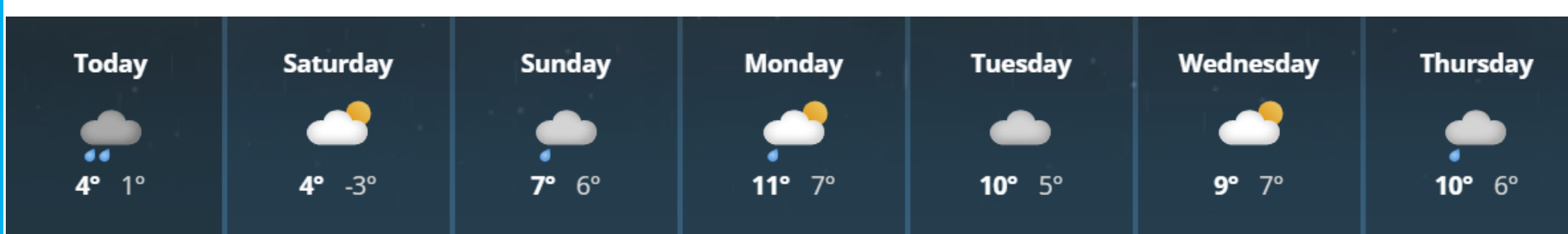
[Kent Closures - Kent County Council.](#)

You can help us in the following ways:

- Making sure that your contact details are correct on your Arbor account. There should be at least two emergency contacts per child.
- Ensure that students wear suitable, warm clothing - gloves, hats, scarves, wellies or even a change of clothing if needed
- If you are a working parent or carer or may have difficulty with an early pick up, please have a backup plan with another family member or parent or carer
- Please be mindful that we may notify parents with less than 24 hours notice that the kitchen is unable to provide school dinners due to delivery issues. If this is the case we would ask for a packed lunch to be provided

It has been a team effort to keep the site safe for the children this week, with regular gritting happening on the playground to enable break and lunchtimes to continue outside - thank you to everyone who has assisted in making the area ice and slip free.

The latest forecast from The Met Office shows a warming of temperatures next week, but please remain mindful of the Winter Weather plan on this page as we head through the rest of this month and through February which has seen plenty of snowfall over the years.



Keep up-to-date with the Met Office app or through their website:

[Weather and climate change - Met Office](#)

# SLADE PARENT SURVEY 2025

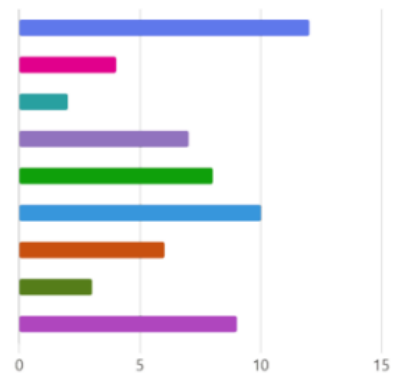
We are pleased to be able to share with you in today's newsletter, the results and comments from our recent Parent Survey. Thankyou to everyone who took their time to share their views.

- Elmer 6
- Gruffalo 7
- Pixie 9
- Elf 6
- Gnome 7
- Sprite 6
- Pegasus 7
- Hippogriff 3
- Phoenix 12
- Sphinx 4
- Wyvern 5
- Hydra 7
- Griffin 3
- Dragon 4

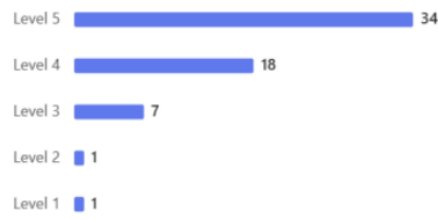


2. Please share how long you have been a part of the Slade community

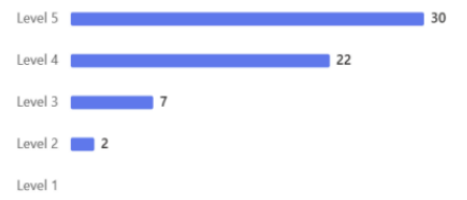
- I am new to the school this year 12
- 0-1 years 4
- 1 - 2 years 2
- 2 - 3 years 7
- 3 - 4 years 8
- 4 - 5 years 10
- 5 - 6 years 6
- 6 - 7 years 3
- 7+ years 9



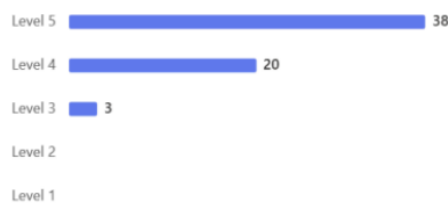
3. My child enjoys school



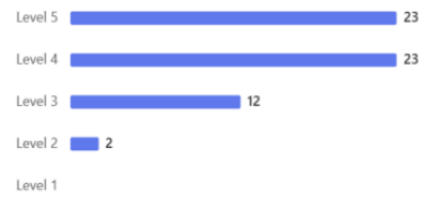
5. My child is making good progress at school from their individual starting point



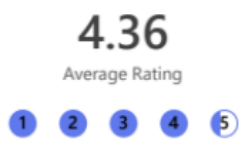
4. The school keeps my child safe



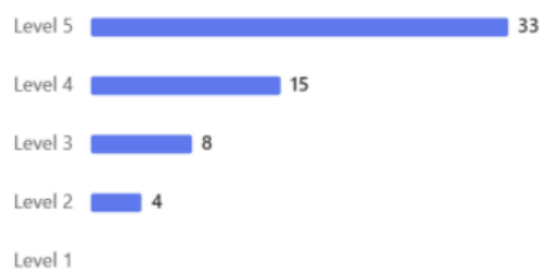
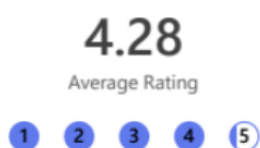
6. The school makes sure that my child is prepared for the future socially, academically and emotionally



7. The school is effectively led and managed by the Senior Leadership Team and Governors



8. I am happy with my child's experience at Slade Primary School



# What do you like about Slade?

Community feel and being 'met where they are'.

They go in happy and leave happy.

'The choirs which my child is involved in, has given her a sense of achievement and belonging.

The diversity and how children are always at the heart of everything.

The school has a lovely community feel. Everyone there, staff and pupils alike, seem genuinely happy to be there.

The nurturing and community led ethos.

I like the kindness and dedication of the staff as well as the importance of BSL across the school.

The new knowledge he comes home with.

My daughter never wants a day off school.

Seeing them thrive with their learning and being excited to learn more

Quality of the teaching, the responsiveness of the school when queries or issues are raised, the visibility of the Head Teacher / teachers at drop off and pick up.

We've seen notable improvements over the years in terms of the communication from the school - the morning emails are always very helpful!

They are relaxed and confident around teachers.

Learning environment. Staff are very approachable.

When issues are addressed with teachers, it is always dealt with quickly and I feel heard. I love the inclusion of the signing choir.

The teachers and team are amazing! I feel supported as a parent as well as my child.

Every child is seen and treated as an individual.

Forest school

They enjoy attending school/want to go. Even when it's hard.

Location and diversity of families.

The use of the library weekly.

All the teachers and TAs seem caring and to genuinely enjoy their (very difficult) jobs.

Support for his additional needs and sports provision.

It is local to home, my children have made good progress with their learning and development.

# What do you not want us to lose?

A willingness to believe in everyone

School trips and clubs

Inclusivity

The sense of community

Forest School

Hearing Impairment Unit

That you think about the children's individual needs

The children being valued and championed for who they are as individuals but also understanding they're a part of a bigger community

Timely communications, SEN support, sign language

The school's incredible outdoor facilities—such as the forest school, outdoor classrooms, and large field—are a wonderful asset.

The parking perk. And Stephen's morning emails of course!

Dedicated sports teacher

Daily mile exercises to encourage the children in the morning and afternoons to give them a movement break.

The welcoming and caring atmosphere. It really makes a difference.

The communication style with parents - it's excellent.

The way of teaching

Sense of fun and community, which is fostered at the whole school/carers events (sports day, summer fair, fireworks etc)

The kindness generosity and empathy that you all are showing to the children, parents.

Vision and what the school stands for, especially with all the pressure currently society is facing.

I don't want you to lose discipline.

The happiness vibe, the positivity instilled in children.

The community spirit and togetherness, as supported by PTA events such as the Fireworks, Summer Fete etc.

Positive vibe I feel when I am there

Funding

# What one small change would you like to see?

Bigger cutlery at lunchtime!

Bigger portions at lunch!

Titans support

Recognition for quieter children who just get on and behave every day

More outdoor learning - not just Forest School

Ban smartphones in school

More structure at lunchtimes

More variety of after school clubs - craft/lego

Movement breaks

Music specialist

Make the toilets nicer/cleaner

More TAs in the classroom

More child progress updates

Working on independence particularly transition to secondary school

Consistent response when emailing the school

More focus on seeing that they eat their lunch

Develop confidence

Full time teachers

Addressing parking in front of the school gates

Extra school trips to the local castle, nature reserves and coast

Changes to the seating arrangements

Healthy friendships

Topic folder

Improvement to behaviour

# What one big change would you like to see?

Meaningful consequences for poor choices/behaviour

Weekly Forest School

Visit classes every term

Go back to the 'outstanding' rating

Reduce the size of the school to how it was

More 1:1 reading

Additional big play equipment

Regular homework

Less reliance on fidget toys and ear defenders

More lessons outside

The school to join an academy

To be more environmentally friendly

An overhaul of the school communication

Teaching assistants in the classrooms

Development of the buildings

To have a deal with Clarks shoe shop

Better SEN provision

Mobile phones only from Year 6

Wearing PE and Forest School clothes all day

Buddy and mentorship systems

Raise issues proactively and promptly

More comfortable chairs

Zones on the playground at lunchtime

More discipline

## ZIGGY AND DIBBLES GO ON HOLIDAY

Over the Christmas and New Year break, our resident rabbits hopped out of school with the rest of us to spend some quality time with friends and family. In their case, Ziggy and Dibbles were lucky enough to spend their holiday with Sid and his family from Griffin Class.

Sid let us know how they got on:

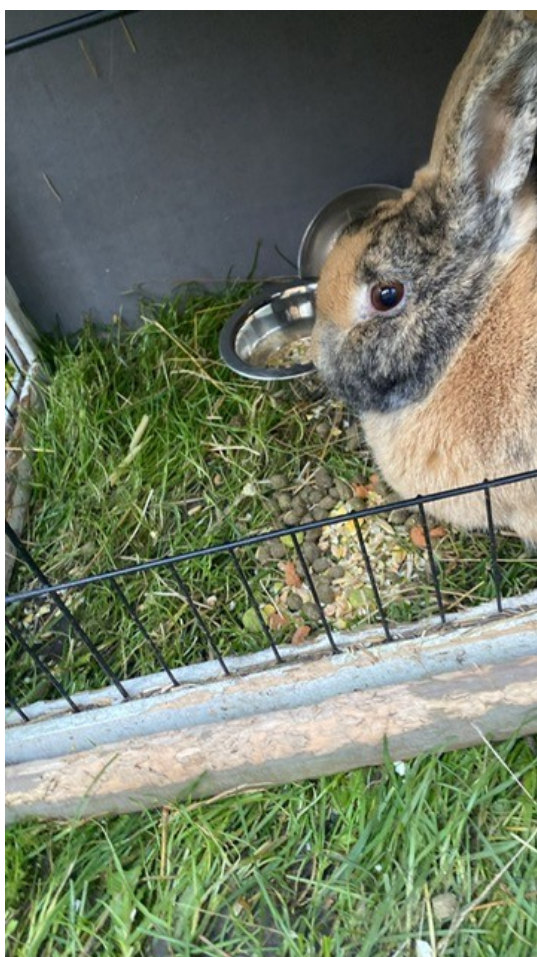
During the half-term holidays, I was given the responsibility of looking after the school bunnies, Ziggy and Dibbles. This was an important job, as it meant making sure they were healthy, safe, and well cared for while school was closed.

Each day, I made sure Ziggy and Dibbles had fresh food, plenty of hay, and clean water. I regularly cleaned out their hutch to make sure their living area was clean and comfortable. I also checked that their enclosure was safe and that they looked healthy.

I liked spending time with the bunnies watching their behavior and gently interacting with them. It was interesting to notice their different personalities: Ziggy was more energetic and curious, while Dibbles was calmer and preferred to relax. I enjoyed spending time with them.

Looking after the school bunnies helped me develop a sense of responsibility and independence. It was hard work, but I found it very rewarding. I enjoyed the experience and felt proud to be trusted with such an important role during the half term.

Sid, Griffin Class, Year 6



## Attendance

Over a school year, we are due to be open for 190 days which equates to 380 sessions.

Registration takes place at 08:50 in the morning and after lunch in the afternoon.

Attendance is affected if a pupil is not present at school for any whole session including registration.

Please try not to book routine medical appointments or holidays (even travel) in school time. You should notify us of any planned absence immediately via [attendance@slade.kent.sch.uk](mailto:attendance@slade.kent.sch.uk)

**The class with the best attendance each week will win Attendance Ted.**

Three way Attendance champions for the three days in this week's counting. 100%ers Pixie, Phoenix and Dragon. Well done to everyone in Mr Clark, Miss Taylor, Miss Maple and Mrs Worley's classes.



Our Attendance Target = 97.0%

Our Attendance This Year = 95.6%

Our Attendance This Week = 96.5%

## Attendance Ted This Week

Position	Class	Year Group	Attendance this Week
1	Pixie	Year 1, Mr Clark	100%
1	Phoenix	Year 4, Miss Taylor and Miss Maple	100%
1	Dragon	Year 6, Mrs Worley	100%
4	Hippogriff	Year 3, Mr Louth	98.7%
5	Elmer	EYFS, Mrs Pearson	97.3%
5	Griffin	Year 6, Mrs Fordyce	97.3%
7	Pegasus	Year 3, Miss Meers and	96.7%
8	Gruffalo	EYFS, Mrs Pearson	96.6%
9	Sprite	Year 2, Mrs Curtis	96.0%
9	Sphinx	Year 4, Mrs Burnside	96.0%
11	Gnome	Year 2, Mrs Manktelow	95.3%
12	Elf	Year 1, Mrs Hitchcock	93.3%
13	Hydra	Year 5, Mr Duffin	92.7%
14	Wyvern	Year 5, Miss Hall and Mrs Potter	90.7%

Late Children This Week - 43



## Punctuality

Registers are taken at 08:50. If children arrive after this time, they are registered late.

It is important that the children are at school on time every day to prevent disruption and upset to their day and for the rest of their class.

Punctuality Pup is awarded to the class with the best punctuality each week.

## Punctuality Pup This Week

Well done to all of the classes with no late pupils this week: Elf

Mrs Hitchcock's Year 1 Elf Class were the only class at school not to have anyone late this week; congratulations to them. In total there were 43 children late (an average of 14/day!) with 1130 lost learning minutes between Tuesday and Thursday.

## A THANKYOU FROM MRS STEPHENS

Thank you so much to all the parents and carers that have donated items for our new lunchtime provision. We've had some generous donations of wooden pallets and tyres which we are looking forward to putting to good use!



We would still really appreciate some wooden scaffolding boards as part of a project to build a sandpit and also use them as part of a giant construction area. If anyone has any links to scaffolding firms or happens to have any wooden boards of this nature that are looking for a new home, we would really appreciate them in school.

We would also love some sand toys that could be used once the sandpit is ready! Thanks so much for your support.



Stephanie Stephens

Mrs Stephens shared details of an improved lunchtime experience for the children in this morning's assembly which will take effect from next Wednesday. We will cover these changes and how they have bedded in on the pages of next week's newsletter.

**GIRLS CRICKET**  
**SKILLS TRAINING**  
**WITH TONBRIDGE CC**

**FRIDAYS | 16 JANUARY - 27 MARCH 2026**  
**6.00PM - 7.15PM**  
**SCHOOL YEARS 4, 5 & 6 | GIRLS ONLY**  
**HILDEN GRANGE SCHOOL, TONBRIDGE**  
**BEGINNERS WELCOME**  
**EMAIL FOR INFORMATION**  
**TONCCGIRLS@OUTLOOK.COM**

September	October	November
		
December	January	February
		<p>Year 3 Living History Workshop</p> <p><b>Monday 5 - T&amp;MBC Mayor's Debate</b></p> <p>Tuesday 10 - Online Safety Day</p> <p>Friday 13 - Last Day of Term 3</p> <p>Monday 16 - Friday 20 - February Break</p> <p>Monday 23 - First Day of Term 4</p> <p><b>Monday 23 - Bikeability Group 1</b></p> <p><b>Tuesday 24 - Bikeability Group 1A</b></p> <p><b>Wednesday 25 - Bikeability Group 1B</b></p> <p><b>Thursday 26 - Bikeability Group 1C</b></p> <p>Tuesday 24 - EYFS Godstone Farm Visit</p> <p><b>Tuesday 24 - Young Voices Concert o2</b></p>
March	April	May
<p>Thursday 5 - World Book Day</p> <p>Wednesday 11 - Year 4 Maidstone Visit</p> <p><b>Monday 16 - Bikeability Group 2</b></p> <p><b>Tuesday 17 - Bikeability Group 2D</b></p> <p><b>Wednesday 18 - Bikeability Group 2E</b></p> <p><b>Thursday 19 - Bikeability Group 2F</b></p> <p>Wednesday 18 - Year 1 Tunbridge Wells Visit</p> <p><b>Friday 20 - Year 5 Herstmonceux Visit</b></p> <p>Tuesday 24 - Parent - Teacher Consultations (16:00 - 19:00)</p> <p>Thursday 26 - Parent - Teacher Consultations (16:00 - 19:00)</p>	<p>Thursday 2 - Last Day of Term 4</p> <p>Friday 3 - Friday 17 - Easter and Early Summer Holiday</p> <p>Monday 20 - First Day of Term 5</p>	<p>Monday 4 - National Holiday</p> <p>Tuesday 5 - Sphinx Hindu Temple Visit</p> <p>Wednesday 6 - Phoenix Hindu Temple Visit</p> <p>Thursday 7 - Year 3 Leavesden Visit</p> <p>Thursday 7 - Year 6 Activity Week Video Meeting Release</p> <p>Monday 11 - Thursday 14 - KS2 SATs Week</p> <p>Friday 22 - Last Day of Term 5</p>
June	July	
<p>Monday 1 - First Day of Term 6</p> <p>Monday 1 - Friday 5 - Multiplication Screening for Year 4 pupils</p> <p>Monday 8 - Friday 12 - Phonics Screening for Year 1 pupils</p> <p>Wednesday 10 - Year 4 Hands on History Workshop</p> <p>Friday 12 - Year 2 Kent Life Visit</p> <p>Thursday 18 - Sports Day</p> <p>Thursday 25 - Reserve Sports Day</p> <p>Tuesday 30 - EYFS26 New Parents Information Meeting</p>	<p>Wednesday 1 - EYFS26 New Parents Information Meeting</p> <p>Thursday 2 - Transition Day</p> <p>Tuesday 7 - Open Evening (17:00 - 19:00)</p> <p>Monday 13 - School Reports Sent to Parents</p> <p>Monday 13 - Year 6 Production (18:30)</p> <p>Wednesday 15 - Year 6 Production (18:30)</p> <p>Friday 17 July - Last Day of Term 6</p>	<p>More information about these events will appear nearer the time.</p> <p>Events and dates are subject to change</p> <p><a href="#">Full Online Calendar</a></p> <p><a href="#">2025/26 Term Dates</a></p>

*Changes and additions to the diary from last week's calendar are written in red for ease of reference*

**In class**

My child's class learning, class activities, lessons, homework or pastoral support; concerns about bullying and behaviour

[classname@slade.kent.sch.uk](mailto:classname@slade.kent.sch.uk)

**Absence**

Sickness Reporting, Absence Requests and all Medical Appointments

[attendance@slade.kent.sch.u](mailto:attendance@slade.kent.sch.u)

**School Office**

General Enquiries and School Events

[office@slade.kent.sch.uk](mailto:office@slade.kent.sch.uk)

**Slade PTA**

Slade PTA

[pta@slade.kent.sch.uk](mailto:pta@slade.kent.sch.uk)

**Wraparound**

Yeti's Wraparound: Childcare Voucher questions and all General Enquiries

[yetis@slade.kent.sch.uk](mailto:yetis@slade.kent.sch.uk)

**Sport and Activity**

Extra Curricular Activity Clubs (booking and queries) Sports Events and Representative Sports Tournaments

[sportsandactivities@slade.kent.sch.uk](mailto:sportsandactivities@slade.kent.sch.uk)

**Admissions**

In Year and September EYFS Admissions

[admissions@slade.kent.sch.uk](mailto:admissions@slade.kent.sch.uk)

**Finance**

Childcare Vouchers, Payments for Yeti's and School Meals and School Trips and Special Lessons

[finance@slade.kent.sch.uk](mailto:finance@slade.kent.sch.uk)

**School Lunches**

Comments and questions about school meal provision from Emma's Kitchen

[emma@emmaskitchen.co](mailto:emma@emmaskitchen.co)

**Family Liaison**

If you would like the services of our Family Liaison Officer, Libby, or just wish to talk over a family issue in confidence

[flo@slade.kent.sch.uk](mailto:flo@slade.kent.sch.uk)

**Complaints**

For all complaints, please refer to the [Complaints Policy](#) then contact us:

[slaws@slade.kent.sch.uk](mailto:slaws@slade.kent.sch.uk)

**GDPR**

Reporting of GDPR Breaches, details of our privacy policy and for Subject Access Requests

[slaws@slade.kent.sch.uk](mailto:slaws@slade.kent.sch.uk)

**Payments**

**School Dinners**

School Dinners provided by Emma's Kitchen are free to the following groups:  
 EYFS Classes, Year 1 Classes, Year 2 Classes, EYFS, KS1 and KS2 pupils eligible for benefits related Free School Meals  
 School Dinners provided to KS2 (Year 3-6) children are charged at £2.60 per meal.  
 Credit should be loaded onto the Meals section of your Arbor account in advance of a meal being taken.

**Yeti's Wraparound Provision (Breakfast and After School Clubs)**

Breakfast Club is charged at £5.25 per session After School Club is charged at £5.25 per session:  
 Session 1 (15:30 - 16:30), Session 2 (16:30 - 17:30), Session 3 (17:30 - 18:00 Tuesday, Wednesday and Thursday Only)  
 Payment and Booking should be made via your online Arbor account.  
 For full information please see our website: [Breakfast and After School Clubs](#)

**School Visits, Other Special Events and Swimming Lessons**

These payments are all made via your Arbor account. You will receive details of the amount owed and the due date as well as information on the event via email in advance.