



SLADE

PRIMARY SCHOOL

Friday 23 January 2026

Term 3, Issue 3

Dear Parents and Families,

I cannot believe we are already halfway through Term 3, with only one week of January remaining! It has been another busy week in school with lots happening both across the school and out in our local community.

Over the last few weeks members of the Senior Leadership Team (SLT) have been visiting classes as part of our regular monitoring timetable. These visits help us to understand how the provision in place for each child is impacting their learning and whether any further adaptations can be made to support them further. It is always a pleasure to spend time with the children and hear about their learning first hand so that we can continue to improve as a school. Next Friday, your child will once again bring their books home giving you another opportunity to talk together about the progress they have made since you last looked through them.

On Wednesday, Mrs Stephens, Mrs Pearson, Mrs Butrymowicz and I spent the morning organising and tidying the Yeti resources in our Wraparound Care provision. We are incredibly fortunate to have such a wide range of puzzles, games and arts and crafts activities for children of all ages and it was clear that some were not being used as much as they could be. Everything has now been reorganised which has created a lot more space for the children in order to ensure the environment is fit for purpose. Moving forward the Yeti's Team will be building on the zone approach that we started at the end of last term to ensure even more is on offer for the children that attend.



Yesterday, we welcomed our Class Reps into school for their termly meeting. We reviewed the actions from our previous meeting and were pleased to share that nearly all had already been completed, with many being quick fixes. Mrs Stephens also shared further information about lunchtimes, including what is in store in the long term and we also had the opportunity to hear valuable feedback from our Class Reps. Thank you once again to everyone who takes on this role as it is an important and effective way for us to maintain open communication with our families.

Finally, a small plea regarding use of the main gate in the mornings. Please can I ask that all adults are mindful not to block the entrance to the playground so that children can enter safely without having to navigate around the adults. For those who wait to wave once your child has reached their classroom door, please ensure you step to one side to keep the entrance clear. Thank you very much for your support with this.

I hope you all have a lovely weekend and look forward to seeing you all on the gate next week!

Warm regards,

Viki

Monday 26 January

-

Tuesday 27 January

- Hydra Class Swimming Lesson
- Boccia Festival (Mote Park, Maidstone. Details known to participants)

Wednesday 28 January

- Gruffalo Class Forest School
- KS1 Physical Literacy (St Johns Sports Hall. This is a rearranged date; details known to participants)

Thursday 29 January

- Phoenix Class Forest School
- Wyvern Class Swimming Lesson

Friday 30 January

- Sphinx Class Forest School
- 16:00 - Year 5 Football League vs Hildenborough (Longmead Stadium. Details known to participants)

Saturday 31 January

- Tonbridge Angels v. Maidstone United. See Page 8

Looking Further Ahead?

Our yearly planner can be found on Page 13 of today's newsletter and online via [the school website](#).

AFTERNOON CROSSING PATROL RETURNS

We are very happy to report that the afternoon Road Crossing Patrol has returned to the junction of The Slade and Stafford Road.

The position has been vacant since the retirement of Ray Dolley in the summer, but we are delighted to announce that Ray has handed over his lollipop to his Caretaking colleague Adam Humphrey who completed his training this week and can now be found keeping our children and families safe crossing the busy junction between 15:05 and 15:35 as the children finish their school day.

The Road Crossing Patrol is a Kent County Council position; officers have a legal right to stop traffic for anyone who needs help crossing the road.

It is an offence to fail to stop when a school crossing patrol displays the stop sign. They have the same authority as a police officer to stop traffic. Failing to stop puts vulnerable road users at risk and the patrol staff are instructed to report any driver who fails to stop to the Police and this could result in prosecution. Read more about [road users requiring extra care](#).

We know that you will all welcome Adam into his new and additional role within the school community as he joins morning counterpart Denise Dolley as part of the KCC road crossing crew.

Adam said of the role, 'I would like to say thankyou to all of the parents and children who have welcomed me to the Road Crossing Patrol, I look forward to seeing you every afternoon. The patrol is an important part of life at Slade as we want to keep all of our families safe when coming to and leaving school. I have already seen some dangerous actions from drivers, not from parents at school I should add, so please do watch and listen out, and wait until it is safe to cross whilst we make sure the traffic has come to a complete stop! See you all next week!'



CLASS REP MEETING

It was lovely to be able to catch up with our Class Reps yesterday afternoon.

Amongst the topics discussed were the recent enhancements to lunchtimes, ticketing for Christmas shows, school milk, extra curricular clubs, fidget toys, Lockdown alarms, toilet facilities, photographs, bikes, term dates and lots more which had all been fed back as questions by parents.

Keep it coming, we love to hear what you think as it helps us to know what we are doing well and where you believe we could do even better.

YEAR 5 FOREST SCHOOL SWAP

There has been a slight alteration to the Forest School timetable at the beginning of February to account for a clash for swimming lessons.

The diary will now read:

Thursday 5 February - Hydra Class Forest School and Wyvern Class Swimming

Friday 6 February - Wyvern Class Forest School

ROYAL ACADEMY OF ARTS SUMMER SHOW

We are very pleased to say that Slade are again signed up to the Royal Academy of Arts Summer Show which will allow for young artists at our school to submit their artwork for this years show. Each student can submit one artwork and there is no theme. When you enter, the application will require an image of the artwork plus some information about the piece such as title, size, and some text written by the artist which can include why they created the work and what it means to them. The panel of judges will see the artwork and the selected pieces will be shown in the RA online exhibition. Selected artworks will also be shown at the Royal Academy of Arts.

Entries can be made now through to the closing date of Wednesday 4 March. Please let us know if you make an entry and we will feature your artwork here in the school newsletter.

Full information can be found here: [Young Artists via royalacademy.org.uk](https://royalacademy.org.uk/young-artists).

The poster features a purple background with green and yellow dotted patterns. The RA logo is in the top left. The main title 'Young Artists' Summer Show' is in large white font, with '2026' in a blue script font below it. The Royal Academy of Arts logo is in the bottom left, and a credit line is in the bottom right.

RA

Call for entries

An exciting opportunity for students aged 4–18, who are living and studying in the UK, to exhibit their artwork on site or online at the Royal Academy of Arts.

Open for submissions
5 January–4 March 2026

Find out more and enter
roy.ac/youngartists
[@royalacademyarts](https://twitter.com/royalacademyarts)

Young Artists' Summer Show

2026

Royal Academy of Arts

Made possible by Robin Hambro

GREEN RANGERS FIXING THE FLOODS

This week, our Green Rangers have been busy with Miss Hall as they formed a working party to provide some much needed maintenance to the Forest School area which is suffering its annual winter weather battering!

They took all the donated Christmas trees down to the waterlogged Forest School and used the loppers and secateurs to chop all the branches off.

The trees will be used to lay down as paths when the floods recede and for classes across the school to use as den camouflage during their outside learning sessions.

Thankyou to all of the families who donated their old Christmas tree this month which has allowed us to make improvements during this wet season and to the Green Rangers for showing their dedication to their role in making the area fit for use for classes using the Forest School this month.



The Green Rangers working party will be back out with their maintenance work on Wednesday 11 February, just before the February break to prepare the ground for next term.

Our Forest School sessions for the rest of this term:

Wednesday 28 January - Gruffalo Class

Thursday 29 January - Phoenix Class

Friday 30 January - Sphinx Class

Wednesday 4 February - Elmer Class

Thursday 5 February - Hydra Class

Friday 6 February - Wyvern Class

Wednesday 11 February - Green Rangers

Thursday 12 February - Griffin Class

Friday 13 February - Dragon Class

4 GOALS, 3 POINTS AND A GREAT DAY AT THE ANGELS!

Thankyou to everyone who took advantage of the School Partners Day ticket giveaway at Tonbridge Angels FC last weekend; Over 100 of you took home a pair of tickets for the Angels' match against AFC Totton in the National League South on Saturday meaning we had a strong Slade representation at Longmead, those fans were rewarded with a superb 4:1 victory over play-off chasing team from Hampshire. Watch again with the official Tonbridge Angels highlights from [AngelsTV via YouTube](#).

Wink Tompkinson reported on the [Tonbridge Angels website](#):

Tonbridge Angels would like to thank all the local primary schools who took part in our first School Partner Day on Saturday.

Our free ticketing initiative resulted in an additional 700 local parents and children attending the game. The attendance figure for the match was 1,656 and was the highest football attendance in Kent on Saturday. Tonbridge Angels Chair, Sophie Purves said:



"Our first School Partner Day was a great success and we were delighted to have so many new supporters at the Yeomans Community Stadium. It was really heart warming to see the young children so excited about the game and cheering on the team from start to finish. We hope our friendly, welcoming environment and the entertaining football on display will encourage local families to visit us again. There is no doubt the atmosphere was very special and lifted everyone's spirits in January."



Match pictures from the [Tonbridge Angels match report](#) and were taken by David Couldridge.



Sablier (27), Baker (50),
Babajide (68), Korboa (70)

4 : 1



Clarke (28)

Family Football Fun at Tonbridge Angels



Marnie with her Daddy cheering on the boys in blue



Henry, Jacob and Dad in the Main Stand



Mrs Buckland with grandson Alfred



Our front cover picture today features Herman from Elmer Class with Tonbridge defender Kyle Smith after the match on Saturday

SLADE AT TAFC

We were really pleased to hear so many positive comments that children and parents have passed on to us this week following the School Partners Day at Tonbridge Angels last Saturday, everyone at Slade is delighted at the success of the event which helped to celebrate sporting participation and achievement of Primary Schools in the local area. One of the best bits of this week was sitting in the school office on Tuesday lunchtime hearing a group of older children outside singing Tonbridge Angels songs!

As part of the occasion, the club invited local primary children to be ballboys around the pitch and also to take part in a special half-time challenge. Well done to Alfie, Daisy, Ellis, George, Dexter and Charlie for performing ball retrieval duties so well, helping the players and allowing the match to flow properly.

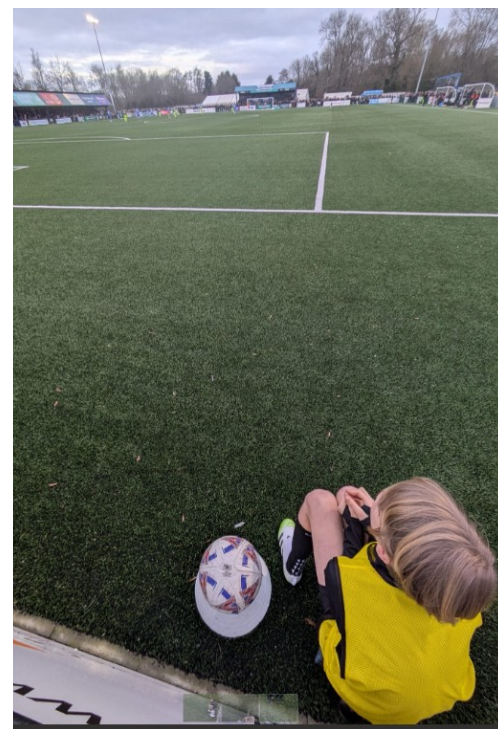
The Half-Time Challenge was a success for Slade! Dexter took part and told us all about it:



'The half-time challenge was a lot of fun to take part in, we competed against St Matthew's School and we were good enough to win! There were three small goals: Red (which you got 5 points for scoring in), Green (10 points) and Black (20 points). We had to try and get the ball in the red net, then the green net and then black on each of our turns and if you missed, you had to go back to the beginning and score in red again! The challenge was made harder in that you only had 90 seconds to play in! The Slade team scored most points and we won. Most of us from Slade were used to playing at the Yeomans Community Stadium at Longmead as we have played tournaments and done soccer schools and training on the pitch so it was a familiar and friendly environment; we all got in the zone quickly, so it was easy to beat any nerves about playing in front of nearly 2000 people!'



Ball boys and girls receiving their Instructions, then time for a pitchside view!



Tonbridge Angels continue their National League South campaign with two away fixtures; firstly at [Slough Town](#) tomorrow with a 15:00 kick-off at Arbour Park SL2 5AY and then some Monday Night Football in Essex at the beginning of next week on 26 January at Dunmow Group Stadium, CM1 2EH, home of [Chelmsford City](#).

The next time the team take to the field at home is next Saturday when they take on local rivals [Maidstone United](#) in a 15:00 kick off.. Tickets for Tonbridge Angels supporters can be purchased via this link:

[Tonbridge Angels vs Maidstone United: Home Fans](#)

KEY STAGE 2 DISCO

The PTA invites you to the KS2 Disco on Friday 6 February.

Years 3/4 5-6.30pm

Years 5/6 6.30-8pm

Arrival will be through the main school gates where school staff will sign children in and ensure that they are handed over to their grown-ups at the end of their disco.

Entry is £3.50 on the door and you can also purchase credits at the entry desk to go on your entry wristband at 50p each. Each credit will buy you a drink, some sweets and/or a packet of crisps.

Glow sticks will be on sale for £1 with larger ones costing £2. Please bring the correct money in cash if possible for the £3.50 entry wristband plus the number of 50p credits you want to purchase.

Wristbands will also be on sale on Wednesday 4 and Thursday 5 February on the playground at pick-up to reduce the queues on the night.

FRIDAY 6TH FEBRUARY

KS2
Disco

TICKETS £3.50 ON THE GATE

CRISPS, SWEETS & DRINKS 50P
GLOW STICKS £1 & £2 OPTIONS

TICKET PRE-SALE 4TH & 5TH FEB @ PICKUP
PLEASE SEE EMAIL FOR FULL DETAILS

YEARS 3&4 5-6.30PM
YEARS 5&6 6.30-8PM

WINNERS OF THE WEEK

TED AND PUP

Attendance: Phoenix Class in Year 4

Punctuality: Phoenix Class in Year 4

TIDY CLASSROOMS

As judged by our House Captains

Key Stage 1: Gruffalo and Pixie

Key Stage 2: Hydra

SUPERSTARS OF THE WEEK



EYFS: Victoria and Winter

Year 1: Jesse and Romilly



Year 2: Ralph and Noah

Year 3: Jacob and Ashley



Year 4: Fifi and Cole

Year 5: Esmée and Harry

Year 6: Ross and Albert

CELEBRATING OUR SCHOOL VALUES

Special congratulations to the following children for earning a certificate from Miss Garrett for demonstrating that they understand and constantly show our school values:

Cole (Year 4) for resilience

Blake (Year 6), Romilly (Year 1) for kindness

HOUSE POINTS THIS WEEK

1. Water - 671 Points
2. Earth - 657 Points
3. Air - 626 Points
4. Fire - 623 Points

WALK ON WEDNESDAY

The number of pupils walking, riding or scooting to or part of the way to school through Park and Stride.

Key Stage 1 - Sprite Class (24 out of 30)

Key Stage 2 - Griffin Class (26 out of 30)

TIMES TABLES ROCKSTARS CHAMPIONS



Individual Champions This Week

Year 2: Beth (Gnome)

Year 5: Aliya (Wyvern)

Year 3: Ava (Hippogriff)

Year 6: Isaac (Dragon)

Year 4: Fifi (Phoenix)

Term 3 Class Competition (Current)

1: Sphinx

2: Pegasus

3: Sprite

Attendance

Over a school year, we are due to be open for 190 days which equates to 380 sessions.

Registration takes place at 08:50 in the morning and after lunch in the afternoon.

Attendance is affected if a pupil is not present at school for any whole session including registration.

Please try not to book routine medical appointments or holidays (even travel) in school time. You should notify us of any planned absence immediately via attendance@slade.kent.sch.uk

The class with the best attendance each week will win Attendance Ted.

Congratulations to the latest members of the 100% club: Miss Taylor and Miss Maple's Phoenix Class from Year 4.

Longtime winners of the Punctuality prize (see below) they have added the proud fact of having their whole class in for every minute of learning time all week. Thankyou and well done Phoenix Class.



Our Attendance Target = 97.0%

Our Attendance This Year = 95.7%

Our Attendance This Week = 96.5%

Attendance Ted This Week

Position	Class	Year Group	Attendance this Week
1	Phoenix	Year 4, Miss Taylor and Miss Maple	100%
1	Sprite	Year 2, Mrs Curtis	99.3%
1	Gruffalo	EYFS, Mrs Pearson	98.6%
4	Sphinx	Year 4, Mrs Burnside	97.3%
4	Dragon	Year 6, Mrs Worley	97.3%
6	Elmer	EYFS, Mrs Mulhern	97.3%
7	Pixie	Year 1, Mr Clark	97.0%
8	Hydra	Year 5, Mr Duffin	97.0%
9	Pegasus	Year 3, Miss Meers and Miss Elliott	96.7%
9	Gnome	Year 2, Mrs Manktelow	95.3%
11	Elf	Year 1, Mrs Hitchcock	94.0%
12	Hippogriff	Year 3, Mr Louth	94.0%
13	Wyvern	Year 5, Miss Hall and Mrs Potter	94.0%
14	Griffin	Year 6, Mrs Potter	93.3%

Late Children This Week = 60



Punctuality

Registers are taken at 08:50. If children arrive after this time, they are registered late.

It is important that the children are at school on time every day to prevent disruption and upset to their day and for the rest of their class.

Punctuality Pup is awarded to the class with the best punctuality each week.

Punctuality Pup This Week

Well done to all of the classes with no late pupils this week: Phoenix, Dragon

Same as last week (and a few weeks before) as Phoenix and Dragon Class finish the week with no late marks. Phoenix Class have been on time as they also had 100% attendance! The challenge is on to reduce the number of late marks - can you help by being on time every day?

YEAR 5 AND 6 GIRLS FOOTBALL TOURNAMENT

We sent a team to the Tonbridge and Tunbridge Wells Upper Key Stage 2 Football Tournament last night at St Gregory's School in Tunbridge Wells.

The girls drew three of their group games earning three points and unluckily lost to Sussex Road during the tournament.

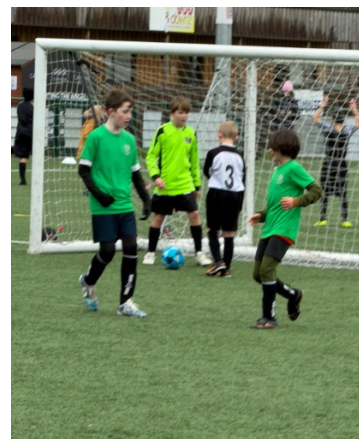
Our player of the evening was Rosie Pallet who stepped in at the last minute to start our last three games in goal - it was her début in this position and produced a series of saves including one excellent stop in the last minute to preserve our point and a clean sheet against St John's Crowborough. Well done Rosie, Slade's Number 1!



BACK AT LONGMEAD

Earlier today, we were delighted to return to the Yeomans Community Stadium at Longmead as our talented squad took part in the Tonbrige Angels Community Football Tournament. This event was designed for children who have not represented the school in a football competition or league during the year, those who are new to football or who would benefit from attending a sporting festival.

The team also had the opportunity to have some skills sessions with players from the Angels Academy and all received a medal for playing their part in the event.



Thankyou very much to all of the parents who attended and who supported the team and the school this morning. Your time is very much appreciated by us all.

September	October	November
		
December	January	February
	<p style="color: red;">Friday 30 - Books Home for the Weekend</p>	<p>Year 3 Living History Workshop</p> <p>Monday 5 - T&MBC Mayor's Debate</p> <p>Tuesday 10 - Online Safety Day</p> <p>Friday 13 - Last Day of Term 3</p> <p>Monday 16 - Friday 20 - February Break</p> <p>Monday 23 - First Day of Term 4</p> <p>Monday 23 - Bikeability Group 1</p> <p>Tuesday 24 - Bikeability Group 1A</p> <p>Wednesday 25 - Bikeability Group 1B</p> <p>Thursday 26 - Bikeability Group 1C</p> <p>Tuesday 24 - EYFS Godstone Farm Visit</p>
March	April	May
<p>Thursday 5 - World Book Day</p> <p>Wednesday 11 - Year 4 Maidstone Visit</p> <p>Monday 16 - Bikeability Group 2</p> <p>Tuesday 17 - Bikeability Group 2D</p> <p>Wednesday 18 - Bikeability Group 2E</p> <p>Thursday 19 - Bikeability Group 2F</p> <p>Wednesday 18 - Year 1 Tunbridge Wells Visit</p> <p>Friday 20 - Year 5 Herstmonceux Visit</p> <p>Tuesday 24 - Parent - Teacher Consultations (16:00 - 19:00)</p> <p>Thursday 26 - Parent - Teacher Consultations (16:00 - 19:00)</p> <p>Tuesday 31 - Spring Concert (18:30)</p>	<p>Thursday 2 - Last Day of Term 4</p> <p>Friday 3 - Friday 17 - Easter and Early Summer Holiday</p> <p>Monday 20 - First Day of Term 5</p>	<p>Monday 4 - National Holiday</p> <p>Tuesday 5 - Sphinx Hindu Temple Visit</p> <p>Wednesday 6 - Phoenix Hindu Temple Visit</p> <p>Thursday 7 - Year 3 Leavesden Visit</p> <p>Thursday 7 - Year 6 Activity Week Video Meeting Release</p> <p>Monday 11 - Thursday 14 - KS2 SATs Week</p> <p>Friday 22 - Last Day of Term 5</p>
June	July	
<p>Monday 1 - First Day of Term 6</p> <p>Monday 1 - Friday 5 - Multiplication Screening for Year 4 pupils</p> <p>Monday 8 - Friday 12 - Phonics Screening for Year 1 pupils</p> <p>Wednesday 10 - Year 4 Hands on History Workshop</p> <p>Friday 12 - Year 2 Kent Life Visit</p> <p>Thursday 18 - Sports Day</p> <p>Thursday 25 - Reserve Sports Day</p> <p>Tuesday 30 - EYFS26 New Parents Information Meeting</p>	<p>Wednesday 1 - EYFS26 New Parents Information Meeting</p> <p>Thursday 2 - Transition Day</p> <p>Tuesday 7 - Open Evening (17:00 - 19:00)</p> <p>Monday 13 - School Reports Sent to Parents</p> <p>Monday 13 - Year 6 Production (18:30)</p> <p>Wednesday 15 - Year 6 Production (18:30)</p> <p>Friday 17 July - Last Day of Term 6</p>	<p>More information about these events will appear nearer the time.</p> <p>Events and dates are subject to change</p> <p style="color: red;"><u>Full Online Calendar</u></p> <p style="color: red;"><u>2025/26 Term Dates</u></p>

In class

My child's class learning, class activities, lessons, homework or pastoral support; concerns about bullying and behaviour

classname@slade.kent.sch.uk

Absence

Sickness Reporting, Absence Requests and all Medical Appointments

attendance@slade.kent.sch.uk

School Office

General Enquiries and School Events

office@slade.kent.sch.uk

Slade PTA

Slade PTA

pta@slade.kent.sch.uk

Wraparound

Yeti's Wraparound: Childcare Voucher questions and all General Enquiries

yetis@slade.kent.sch.uk

Sport and Activity

Extra Curricular Activity Clubs (booking and queries) Sports Events and Representative Sports Tournaments

sportsandactivities@slade.kent.sch.uk

Admissions

In Year and September EYFS Admissions

admissions@slade.kent.sch.uk

Finance

Childcare Vouchers, Payments for Yeti's and School Meals and School Trips and Special Lessons

finance@slade.kent.sch.uk

School Lunches

Comments and questions about school meal provision from Emma's Kitchen

emma@emmaskitchen.co.uk

Family Liaison

If you would like the services of our Family Liaison Officer, Libby, or just wish to talk over a family issue in confidence

flo@slade.kent.sch.uk

Complaints

For all complaints, please refer to the [Complaints Policy](#) then contact us:

slaws@slade.kent.sch.uk

GDPR

Reporting of GDPR Breaches, details of our privacy policy and for Subject Access Requests

slaws@slade.kent.sch.uk

Payments

School Dinners

School Dinners provided by Emma's Kitchen are free to the following groups:
 EYFS Classes, Year 1 Classes, Year 2 Classes, EYFS, KS1 and KS2 pupils eligible for benefits related Free School Meals
 School Dinners provided to KS2 (Year 3-6) children are charged at £2.60 per meal.
 Credit should be loaded onto the Meals section of your Arbor account in advance of a meal being taken.

Yeti's Wraparound Provision (Breakfast and After School Clubs)

Breakfast Club is charged at £5.25 per session After School Club is charged at £5.25 per session:
 After School Club Session 1 (15:30 - 16:30), Session 2 (16:30 - 17:30)
 Payment and Booking should be made via your online Arbor account.
 For full information please see our website: [Breakfast and After School Clubs](#)

School Visits, Other Special Events and Swimming Lessons

These payments are all made via your Arbor account. You will receive details of the amount owed and the due date as well as information on the event via email in advance.