



# SLADE

## PRIMARY SCHOOL

Thursday 2 April 2026

Term 4, Issue 6

Dear Parents and Families,

And just like that, the Spring Term has come to an end! We can hardly believe how quickly this academic year is flying by; it won't be long before we are welcoming the Summer Term!

Despite it being a four-day week, we have certainly packed in a great deal. There have been a number of exciting sporting events, beginning with Cross Country on Monday, where a large number of pupils took part. On Tuesday, our cheerleaders wowed the audience at Hillview Secondary School and on Wednesday, some of our pupils took part in Water Polo. There truly is a sport for everyone! Well done to all those who participated and I know there is much more to look forward to in Terms 5 and 6.

It hasn't just been about sport this week. On Tuesday evening, we held our annual Spring Concert at the beautiful St Saviour's Church. We were treated to wonderful performances from a range of pupils from Year 2 to Year 6 including solos, duets as well as performances from the Year 2 and 3 Choir, Signing Choir and the Key Stage Two Choir! It is incredibly impressive and encouraging to see so many of our children learning musical instruments from such a young age and as I shared at the concert, it is lovely to see the children each year growing in confidence and skill as they progress further in their instrument.

There are so many benefits to a child learning an instrument and if your child is considering this for the future then we have strong links with Music Station and Kent Music who would be able to support you and your child in choosing which instrument to start to learn. We understand that the cost can be significant, so please be aware that financial support may be available through Kent Music for eligible families and also through our Pupil Premium Partnership. If you would like further information, please either visit the Kent Music website or contact Libby Wilmshurst (our FLO), who will be happy to assist.

Yesterday, our Year 4 pupils welcomed their parents and carers to their assembly, which focused on the theme of friendship. The children did a fantastic job explaining what friendship means and how we can each be a good friend. They also provided a fantastic explanation of the Zones of Regulation approach we use in school which supports children when their emotions can get in the way of their friendships. We were incredibly proud of all of them for how well they learnt their lines and delivering their part of the assembly with such confidence! A big well done to Year 4!

This term, I relaunched our Presentation Picnic Award, where one child from each class is nominated by their teacher for consistently demonstrating excellent presentation in their work over the past four weeks. I have been very impressed with the standard of work in pupils' books this term and the pride they are taking in their learning, particularly when tackling challenges. I look forward to seeing who will be nominated next term...

Today, we said goodbye to Mr Salter during our final Celebration Assembly of the term. After Easter, he will begin an exciting new role as an EYFS Class Teacher at Southborough Primary School. Mr Salter has been with us for just under two years as a Teaching Assistant, developing his skills, and we know his new class will be very lucky to have him. We wish him every success and look forward to hearing how he gets on!

That brings us to the end of Term 4. I hope you all have a wonderful and safe Easter break with your loved ones. We look forward to welcoming everyone back after the holidays (hopefully with some sunshine!)

Viki

## Friday 3 April - Friday 17 April inclusive

- Easter and Early Summer Holiday. School Closed to all pupils

## Friday 3 April

Tonbridge Angels vs Ebbsfleet United Kick off 15:00, gates open from 13:00, National League South

See page 12 for full details

## Saturday 11 April

Tonbridge Angels vs Salsbury Kick off 15:00, gates open from 13:00, National League South

See page 12 for full details

## Thursday 16 April

National Primary School Offer Day (EYFS Intake, September 2026) - Please see page 4 for full details

## Monday 20 April

- First Day of Term 5

## Tuesday 21 April

- Phoenix Class Swimming

## Wednesday 22 April

- Green Rangers Forest School Working Party

## Thursday 23 April

- Dragon Class Forest School
- Sphinx Class Swimming

## Friday 24 April

- Griffin Class Forest School

## Saturday 25 April

Tonbridge Angels vs Torquay United Kick off 12:30, National League South

See page 12 for full details

TCS Mini London Marathon. Details known to participants

## Looking Further Ahead?

Our yearly planner can be found on Page 15 of today's newsletter and online via [the school website](#).

## TERM 4 DONE; EASTER HOLIDAY ON

A busy end of term comes to an end today and we would like to wish all of our children, their families and friends a very happy, relaxing and fun Easter and Early Summer holiday.

The holiday starts today as tomorrow is a national holiday for Good Friday. We are back in school for the first day of Term 5 and Summer at Slade on Monday 20 April.



Term 5 runs until Friday 22 May with a brief, but probably welcome interruption for the annual national holiday on May Day which this year falls on Monday 4 May.

## LOOKING FORWARD TO THE SUMMER AT SLADE

We are looking forward to Term 5 which includes lots of exciting events and as ever, the start of assessment season but also plenty of outside learning opportunities and of course the continuation of our new building taking shape in time for the beginning of May.

We have the termly Forest School timetable on page y of today's newsletter, with these other notable dates already confirmed in the diary:

Tuesday 28 and Wednesday 29 April - Year 2 Educational Visit to Tonbridge Mosque

Thursday 30 April - Year 5 Activity and Learning Day at Caroty Wood

Monday 4 - Friday 8 May - Deaf Awareness Week

Tuesday 5 and Wednesday 6 May - Year 4 Educational Visit to Radha Krishna Hindu Temple

Wednesday 7 May - Year 3 Educational Visit to Harry Potter Studios, Leavesden

Monday 11 - Thursday 14 May - Year 6 End of Key Stage 2 Statutory Assessment Tests

Monday 18 and Thursday 21 May - Year 6 Cooking at Tonbridge School

Tuesday 19 May - Year 1 Educational Visit to Chessington World of Adventures

Friday 22 May - End of Term 5



Add in to that mix our normal range of sporting events including football, cricket, team building, athletics, swimming and more and there is lots to squeeze in, with all of the details of those dates upcoming and a review of how it all went appearing in each week's school newsletter.

## PRIMARY SCHOOL OFFER DAY

Over the Easter holiday, Kent County Council will be sending their offers of primary school places to those parents of children starting school in the Early Years Foundation Stage in September. National Offer Day is on Thursday 16 April.

If you have made an application to join Slade in September, full details of what to do on offer day are on our website. Please click on this link to be prepared for what to do on offer day: [Slade Primary School - Admissions](#).

Parents offered a place at Slade should not send in an acceptance email without also sending in proof of address documents. Full details will be sent on our own welcome email which will follow later on in the day on Thursday 16 April after the official notification from Kent County Council.

## NEW MENU FROM EMMA'S KITCHEN

Emma's Kitchen have produced a new summer menu in time for the beginning of Term 5. The new menu includes the usual favourites, with some lighter summer meals included for the warmer days.

**Emma's Kitchen**  
*Cooking With Love*

The new menu is available on the school website and here via this link:

[Summer Term 5 Menu: Cooking with love from Emma's Kitchen](#)

School meals are free to the following groups:

- Children eligible for benefits related FSM and Pupil Premium in EYFS, Key Stage 1 and Key Stage 2
- Children in EYFS, Year 1 and Year 2 under government Universal Free School Meals Scheme

Meals cost £2.60 to all other pupils in Key Stage 2, which should be paid in advance via your Arbor account, choosing the Meals top-up.

## KENT POLICE NEWSLETTER

We are pleased to share with parents and families, the Summer edition of the Child Centred Policing newsletter produced by Kent Police. This issue contains a reminder for students about staying safe online and information about the latest social media trends.

Recent projects include staying safe with details on knives, catapults and e-scooters.

The newsletter and safety posters can be found on the For Families section of the school website and here:

[Kent Police Summer Newsletter](#) [Catapults](#) [e-Scooters](#)



**Kent  
Police**

## PRESENTATION PICNIC

Very many congratulations to the children who have been chosen by their class teachers this term to attend Miss Garrett's Presentation Picnic which took place this afternoon. The children have all shown immense pride and care in how they have presented their learning in their books to such an extent that their teachers have seen fit to reward them for this termly prize. Miss Garrett was incredibly pleased to host the winners with cake, juice and cookies.

Well done to Marnie, Eva, Evie, Sayuni, Tom, Catherine, Pippa, Clara, Savannah, Esmèe, Theo, Charlie and Yao for being chosen for your beautiful presentation of your learning.



## SPRING CONCERT AT ST SAVIOUR'S

The sound of music filled the air on Tuesday evening as St Saviour's Church in Dry Hill Park Road played host to the perfect finalé of the Spring Term at Slade with our annual Spring Concert.

There were performances by many of our talented individuals as well as group play and song and sign from all there of our choirs: The Young Voices, Our younger ages Choir and Mrs Martin's Signing Choir.

Performing on stage, we saw:

Yao (Year 6) Piano	Zachary (Year 5) Violin	Arthur (Year 5) Piano
Wilfred (Year 4) Guitar	Mia (Year 5) Vocals	Drew (Year 6) Drums)
Jiwon (Year 6) Violin	Ellie (Year 2) Piano	Erin (Year 4) Piano
David (Year 3) Piano	Teddy (Year 2) Vocals	Marley and Paul (Year 6) Duo Drums and Guitar

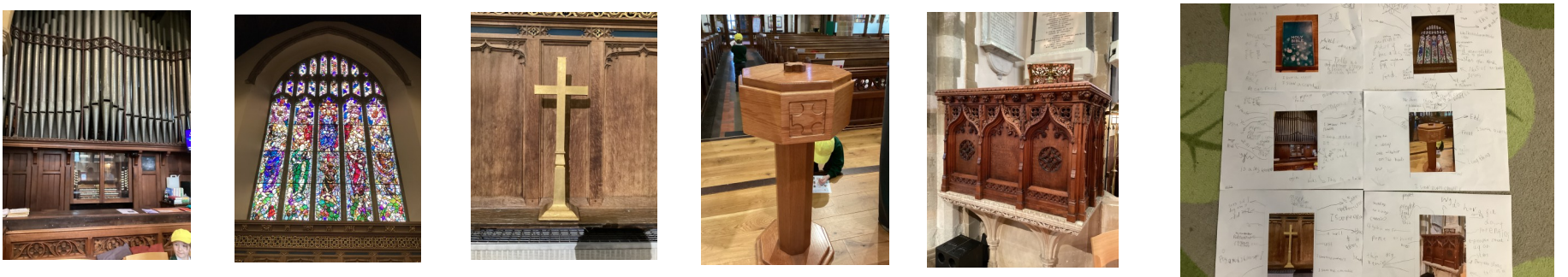
There were also addresses by Alyson Bleakley from the Church and headteacher Viki Garrett.



Thankyou to our talented musicians who performed at the concert, to Miss Taylor for organising the event, to Marley and Drew for hosting and to all of the audience for your support on Tuesday evening.

## YEAR 1 VISIT TO THE PARISH CHURCH

Remaining in Church this Easter week as Year 1 made the short walk to the Parish Church of St Peter and St Paul on Wednesday morning. The Educational Visit took place to complement the learning in Pixie and Elf Classes this term as they have looked at Christianity in their RE lessons. They understand items, stories, days and buildings important to the Christian faith and were delighted to visit a Church to be able to bring their learning to life by being able to see lots of the items and parts of the building that had formed their knowledge in class. When they returned to school, the children successfully managed to draw a plan of a Christian Church and to correctly label the main features they had seen in the morning.



Our thanks to everyone at St Peter and St Paul for their time, especially at the busiest and most special time of the year for those involved in the Church. Thankyou also to the parents and carers who volunteered their time to ensure that this important visit could take place.

# SETTING PARENTAL CONTROLS ON DEVICES



Designated Safeguarding Lead, Mrs Stephens.

Many children use tablets, phones, consoles and computers every day. While these devices offer fantastic learning and entertainment opportunities, they can also expose children to inappropriate content or unsafe communication if settings are not managed carefully.

**Parental controls are one of the easiest and most effective ways to help keep children safe online.**

## Why Parental Controls Matter

Parental controls can help you:

**Manage what your child can see** (e.g., blocking 18+ content).

**Limit screen time** to support healthy routines.

**Control in-app purchases** to avoid unexpected charges.

**Manage who your child can communicate with** on games and apps.

**Create safer digital spaces** for children to learn and play.

## Where to Set Parental Controls

Most devices have built-in tools that are quick to set up:

### 📱 Smartphones & Tablets

#### Apple (iPhones/iPads)

Use *Screen Time* to set age restrictions, limit apps and manage purchases.

#### Android (Samsung, Google, etc.)

Use *Google Family Link* to manage app access, screen time and web filters.

### 💻 Computers & Laptops

#### Windows

Microsoft's *Family Safety* tool allows filtering, time limits and activity reports.

#### Mac

Use *Screen Time* to restrict websites, apps and communication settings.

### 🎮 Games Consoles

#### Nintendo Switch, Xbox, PlayStation

Each console includes parental control settings that manage playtime, online interactions and age-restricted games.

## Top Tips for Parents

Set up controls before giving your child a new device or game.

Keep devices in shared family areas, not bedrooms.

Review settings regularly — children get older and technology changes quickly.

Talk to your child openly about why controls are in place and what to do if something online makes them uncomfortable.

Create a family agreement about screen use (e.g., no screens at bedtime).

## Useful Resources

[www.internetmatters.org](http://www.internetmatters.org) – step-by-step guides for every device

[www.saferinternet.org.uk](http://www.saferinternet.org.uk) – support for online safety at home

[www.nspcc.org.uk/keeping-children-safe/online-safety](http://www.nspcc.org.uk/keeping-children-safe/online-safety) – parental advice and help

## CONGRATULATIONS, POPPY



Regular readers will remember that we recently brought you news of our new Poetry Crew who will be promoting poetry around the school as well as sharing some of their poetry creation with us in the newsletter.

The Poetry Crew was formed after being inspired by the competition run by the Literacy Trust to find the national Young Poet Laureate from schools across the country.

Mrs Burnside is delighted to announce that one of our own, Poppy, from Sphinx Class in Year 4 has been shortlisted for the role of South East Young Poet Laureate with her poem Lyra's Day Out.

As one of the twenty shortlisted entrants, Poppy's poem will be published in an anthology and she'll attend a full-day poetry masterclass at Faber & Faber in London, where she will create poems with professional poets and end the day with a celebratory poetry performance. **Congratulations** to Poppy for such an amazing achievement.

## SITE NEWS

Vic and his team from Integra Buildings have had a busy week preparing the ground for our new building which will be situated next to the Hippogriff classroom.

The work is running to schedule and you should see a big difference when you return after the Easter break with details of the timetable shared in last week's newsletter.



## YOU'VE GOT A FRIEND IN ME!

On Wednesday afternoon, our Year 4 classes presented a special assembly for their parents and carers; over 60 of which watched and heard the message of how to be a good friend.



Phoenix and Sphinx Classes described the Zones of Regulation, familiar to children across the school and how they could be used to help with friendships; when everything was going well and for those times when friendships become a bit more tricky.



They also described what it meant to be a good friend and how they show this in and out of school.



The message was loud and clear and the acting, singing and signing superb as they educated themselves and helped their parents to understand some of the language that they may use at home when describing friendship relationships.

Thankyou very much to everyone who was able to attend yesterday's assembly; we appreciate your time and we hope you found the event useful and informative.



## EASTER FUN FROM THE PTA

With many thanks to the PTA for organising today's Easter fun, games and Choose the Rules day. In return for a small donation towards the PTA Fundraising efforts, the children have had a great day choosing their own rules and playing our special games.

In the younger years, the classes had an Easter Egg Hunt, The children made their way around the school seeking pictures which included a pattern, a number and a letter. They then had to work out Bunny's favourite game by mixing the letters up into the right order!

The children in the older yeargroups had a series of games of the Easter Bunny Drive where the target is to complete a picture of the Easter Bunny; with the only complication being the roll of a dice! Congratulations to those who won their games and we hope that everyone enjoyed their chocolate treat!



# CALL FOR VOLUNTEERS

## NEW CHAIR, TREASURER & SECRETARY NEEDED NOW!

Our PTA exists to make school life richer, happier and more memorable for our children. But right now, without three key volunteer roles filled, the PTA will be forced to close at the end of this academic year.

### What does that mean?

- No events - Christmas Sale, Disco, Easter or Summer
- No trip subsidies
- No classroom parties
- No resource donations
- No learning enrichment - outdoor classrooms; air conditioning; break time resources; funds for sport team uniforms; budget for forest school; food for the school bunnies!!!



EMAIL US: [PTA@SLADE.KENT.SCH.UK](mailto:PTA@SLADE.KENT.SCH.UK)

## TERM 5 TIMETABLE

Wednesday 22 April - Green Rangers

Thursday 23 April - Dragon, Year 6, Mrs Worley

Friday 24 April - Griffin, Year 6, Mrs Fordyce

Wednesday 29 April - Elmer, EYFS, Mrs Mulhern

Friday 1 May - Elf and Pixie, Year 1

Wednesday 6 May - Gruffalo, EYFS, Mrs Hitchcock

Thursday 7 May - Gnome, Year 2, Mrs Manktelow

Friday 8 May - Sprite, Year 2, Mrs Shrimpton

Wednesday 13 May - Green Rangers

Thursday 14 May - Hippogriff, Year 3, Mr Louth

Friday 15 May - Pegasus, Year 3, Miss Meers and Miss Elliott

Wednesday 20 May - Elmer, EYFS, Mrs Mulhern

Thursday 21 May - Sphinx, Year 4, Mrs Burnside

Friday 22 May - Phoenix, Year 3, Miss Taylor and Miss Maple



## TONBRIDGE SCHOOL'S CROSS COUNTRY

On Monday, Slade Primary School was pleased to once again be organising the local schools' Cross Country championships. Five schools attended the event, with over 420 children competing over different distances.

The Year 2, 3 and 4 races took place over a 1.5km course with the Year 5 and 6 children taking on an extra kilometre over the fields of Tonbridge School.

Congratulations to all of the competitors for completing the course and to our Sports Crew for marshalling the event.



## WATER POLO FESTIVAL

Yesterday, six pupils from Year 6 took the walk to Tonbridge School Sports Centre to take part in the Tonbridge School's Water Polo festival.

Water Polo is a game played between two teams with goals at each end of the pool and the winner of the game is the team that scores the most goals.

Players are not allowed to touch the bottom of the pool and have to tread water the whole time. Water polo players use a movement called eggbeater which is more efficient than the normal action of treading water. Players can move the ball by throwing it to a teammate or swimming while pushing the ball in front of them. They can only hold the ball with one hand, other than the goalkeeper who can use both hands.

The match starts with a swim-off. The ball is released in the middle of the pitch with the players lined up along their own goal lines. The first team to reach the ball has the first possession of the game.\*

At the festival, the children were given an introduction to the sport, taught how to tread water efficiently for the duration of the match and how best to score and save goals. It was a super afternoon which may inspire the next generation of water polo stars.

Stars such as Reuben, who took inspiration from last years event to find and join a water polo club locally. He now plays with XXXXXXXXXXXX Club in XXXXXXXXXXXX and enjoyed the chance to spread the word about the sport he immediately loved. His experience and ability led the Slade team to victory in the competition over 10 other local schools. Congratulations to all of the team for a series of magnificent performances to bring home another trophy!



\*Rules of Water Polo taken from the [official site of Swim England](#).

## ANGELS THIS EASTER

We gave away over 100 tickets as part of the recent Tonbridge Angels School Partner Day when the local National League South side took on Bath City at the Yeomans Community Stadium at Longmead on 21 March.

Thankyou to everyone who contacted us to say what a great afternoon they had as the Angels ran out 2:1 winners on the day.



There are more chances to watch Tonbridge Angels this Easter holiday and beyond as the season draws into the run in to the summer starting with tomorrow's Good Friday clash against fellow Kent side, Ebbsfleet United. This match kicks off at 15:00 and features the one off chance to indulge in Creme Egg Chips! All proceeds from the sale of this one off match day treat will go to the Angels Foundation.



Under 12's go free to all Angel's home games (£18 for adults, £15 Concessions and £8 for children aged 12-17). You can buy online or on the day. Turnstiles open from 13:00 with plenty to do around the ground before kick off.

Tonbridge Angels National League South Fixtures for the rest of the season:

**Friday 3 April (15:00 kick off): Tonbridge Angels vs Ebbsfleet United** [Tickets](#)

Monday 6 April (15:00 kick off) Eastbourne Borough vs Tonbridge Angels

**Saturday 11 April (15:00 kick off) Tonbridge Angels vs Salsbury** [Tickets](#)

Saturday 18 April (15:00 kick off) Farnborough vs Tonbridge Angels

**Saturday 25 April (12:30 kick off) Tonbridge Angels vs Torquay United** [Tickets](#)

Angels are also in the Kent Senior Cup Final.

They will play this match on Wednesday 22 April at the home of League 2 side Gillingham FC, kick off is 19:30 and will against Maidstone United - check the official site for more details.

We hope you enjoy supporting the local community club, who enjoy supporting their local community!

Find out more about what is happening at Tonbridge Angels via their official website:

[TAFC: Tonbridge Angels FC](#)

## WINNERS OF THE WEEK

### TED AND PUP

Attendance: Pixie Class in Year 1

Punctuality: Pegasus Class in Year 3

## SUPERSTARS OF THE WEEK



EYFS: Louis and Amayah

Year 1: Valerie and Charlie



Year 2: Flora and Dylan

Year 3: Jackson



Year 4: Cillian and Alice

Year 5: Kiaara and Sophie

Year 6: Aazeen and Imogen

## HOUSE POINTS THIS WEEK

1. Air - 1804 Points
2. Earth - 1802 Points
3. Water - 1795 Points
4. Fire - 1753 Points

## TIDY CLASSROOMS

As judged by our House Captains

Key Stage 1: Not judged this week

Key Stage 2: Not judged this week

## WALK ON WEDNESDAY

The number of pupils walking, riding or scooting to or part of the way to school through Park and Stride.

Key Stage 1 - Gnome Class (25/30)

Key Stage 2 - Hippogriff Class (25/30)

## CELEBRATING OUR SCHOOL VALUES

Special congratulations to the following children for earning a certificate from Miss Garrett for demonstrating that they understand and constantly show our school values:

Amayah, Sophie, Flora, Dylan, Jackson for Kindness

Imogen, Valerie for Resilience



## TIMES TABLES ROCKSTARS CHAMPIONS

Individual Champions This Week

Year 2: Aras (Gnome)

Year 5: Ellen (Hydra)

Year 3: Catherine (Pegasus)

Year 6: Peony (Dragon)

Year 4: Wilf (Phoenix)



Term 4 Class Competition (Current Table)

**The class competition will return in the summer terms**

## DAILY MILE TERMLY COMPETITION

Class Champions This Week

Key Stage 1: Elf (201 Laps)

Key Stage 2: Hydra (625 Laps)



Spring Competition (Weeks Won)

Key Stage 1: Elf (4)

Key Stage 2: Hydra (5)

## Attendance

Over a school year, we are due to be open for 190 days which equates to 380 sessions.

Registration takes place at 08:50 in the morning and after lunch in the afternoon.

Attendance is affected if a pupil is not present at school for any whole session including registration.

Please try not to book routine medical appointments or holidays (even travel) in school time. You should notify us of any planned absence immediately via [attendance@slade.kent.sch.uk](mailto:attendance@slade.kent.sch.uk)

**The class with the best attendance each week will win Attendance Ted.**

100%ers Pixie Class take the main prize this week. Well done to Mr Clark and everyone in his Year 1 class who enjoyed an uninterrupted week in school which included their visit to the Church.



Late Children This Week = 16



## Punctuality Pup This Week

**Well done to all of the classes with no late pupils this week:**

**Pegasus, Gruffalo, Phoenix, Dragon, Sphinx, Wyvern, Griffin**

That's more like it! Congratulations to everyone in these classes for being here on time, ready to learn every day this week! Pegasus Class win Punctuality Pup, having the highest attendance of these classes.

Our Attendance Target = 97.0%

Our Attendance This Year = 95.7%

Our Attendance This Week = 95.6%

## Attendance Ted This Week

Position	Class	Year Group	Attendance this Week
1	Pixie	Year 1, Mr Clark	100%
2	Elmer	EYFS, Mrs Mulhern	99.2%
3	Pegasus	Year 3, Miss Meers and Miss Elliott	99.1%
3	Gnome	Year 2, Mrs Manktelow	98.8%
3	Hippogriff	Year 3, Mr Louth	98.8%
3	Gruffalo	EYFS, Mrs Pearson	97.5%
7	Phoenix	Year 4, Miss Taylor and Miss Maple	95.8%
7	Sprite	Year 2, Mrs Shrimpton	94.5%
9	Elf	Year 1, Mrs Hitchcock	94.2%
9	Dragon	Year 6, Mrs Worley	93.8%
11	Sphinx	Year 4, Mrs Burnside	93.3%
12	Wyvern	Year 5, Miss Hall and Mrs Potter	92.5%
13	Griffin	Year 6, Mrs Fordyce	92.5%
14	Hydra	Year 5, Mr Duffin	90.0%

## Punctuality

Registers are taken at 08:50. If children arrive after this time, they are registered late.

It is important that the children are at school on time every day to prevent disruption and upset to their day and for the rest of their class.

Punctuality Pup is awarded to the class with the best punctuality each week.

September	October	November
		

December	January	February
		

March	April	May
	<p>Thursday 2 - Last Day of Term 4</p> <p>Friday 3 - Friday 17 - Easter and Early Summer Holiday</p> <p>Monday 20 - First Day of Term 5</p> <p>Saturday 25 - TCS Mini London Marathon</p>	<p><b>Friday 1 - Water House Non Uniform Day</b> <i>(more information to be released soon)</i></p> <p>Monday 4 - National Holiday</p> <p>Tuesday 5 - Sphinx Hindu Temple Visit</p> <p>Wednesday 6 - Phoenix Hindu Temple Visit</p> <p>Thursday 7 - Year 3 Leavesden Visit</p> <p>Thursday 7 - Year 6 Activity Week Video Meeting Release</p> <p>Monday 11 - Thursday 14 - KS2 SATs Week</p> <p>Friday 22 - Last Day of Term 5</p>

June	July
<p>Monday 1 - First Day of Term 6</p> <p>Monday 1 - Friday 5 - Multiplication Screening for Year 4 pupils</p> <p>Monday 8 - Friday 12 - Phonics Screening for Year 1 pupils</p> <p>Wednesday 10 - Year 4 Hands on History Workshop</p> <p>Friday 12 - Year 2 Kent Life Visit</p> <p>Thursday 18 - Sports Day</p> <p>Thursday 25 - Reserve Sports Day</p> <p>Tuesday 30 - EYFS26 New Parents Information Meeting</p>	<p>Wednesday 1 - EYFS26 New Parents Information Meeting</p> <p>Thursday 2 - Transition Day</p> <p>Tuesday 7 - Open Evening (17:00 - 19:00)</p> <p>Saturday 11 - PTA Music Festival (15:00 - 18:30)</p> <p>Monday 13 - School Reports Sent to Parents</p> <p>Monday 13 - Year 6 Production (18:30)</p> <p>Wednesday 15 - Year 6 Production (18:30)</p> <p>Friday 17 July - Last Day of Term 6</p>

More information about these events will appear nearer the time.

Events and dates are subject to change

[Full Online Calendar](#)  
[2025/26 Term Dates](#)

**In class**

My child's class learning, class activities, lessons, homework or pastoral support; concerns about bullying and behaviour

[classname@slade.kent.sch.uk](mailto:classname@slade.kent.sch.uk)

**Absence**

Sickness Reporting, Absence Requests and all Medical Appointments

[attendance@slade.kent.sch.uk](mailto:attendance@slade.kent.sch.uk)

**School Office**

General Enquiries and School Events

[office@slade.kent.sch.uk](mailto:office@slade.kent.sch.uk)

**Slade PTA**

Slade PTA

[pta@slade.kent.sch.uk](mailto:pta@slade.kent.sch.uk)

**Wraparound**

Yeti's Wraparound: Childcare Voucher questions and all General Enquiries

[yetis@slade.kent.sch.uk](mailto:yetis@slade.kent.sch.uk)

**Sport and Activity**

Extra Curricular Activity Clubs (booking and queries) Sports Events and Representative Sports Tournaments

[sportsandactivities@slade.kent.sch.uk](mailto:sportsandactivities@slade.kent.sch.uk)

**Admissions**

In Year and September EYFS Admissions

[admissions@slade.kent.sch.uk](mailto:admissions@slade.kent.sch.uk)

**Finance**

Childcare Vouchers, Payments for Yeti's and School Meals and School Trips and Special Lessons

[finance@slade.kent.sch.uk](mailto:finance@slade.kent.sch.uk)

**School Lunches**

Comments and questions about school meal provision from Emma's Kitchen

[emma@emmaskitchen.co.uk](mailto:emma@emmaskitchen.co.uk)

**Family Liaison**

If you would like the services of our Family Liaison Officer, Libby, or just wish to talk over a family issue in confidence

[flo@slade.kent.sch.uk](mailto:flo@slade.kent.sch.uk)

**Complaints**

For all complaints, please refer to the [Complaints Policy](#) then contact us:

[slaws@slade.kent.sch.uk](mailto:slaws@slade.kent.sch.uk)

**GDPR**

Reporting of GDPR Breaches, details of our privacy policy and for Subject Access Requests

[slaws@slade.kent.sch.uk](mailto:slaws@slade.kent.sch.uk)

**Payments**

**School Dinners**

School Dinners provided by Emma's Kitchen are free to the following groups:  
 EYFS Classes, Year 1 Classes, Year 2 Classes, EYFS, KS1 and KS2 pupils eligible for benefits related Free School Meals  
 School Dinners provided to KS2 (Year 3-6) children are charged at £2.60 per meal.  
 Credit should be loaded onto the Meals section of your Arbor account in advance of a meal being taken.

**Yeti's Wraparound Provision (Breakfast and After School Clubs)**

Breakfast Club is charged at £5.25 per session After School Club is charged at £5.25 per session:  
 After School Club Session 1 (15:30 - 16:30), Session 2 (16:30 - 17:30)  
 Payment and Booking should be made via your online Arbor account.  
 For full information please see our website: [Breakfast and After School Clubs](#)

**School Visits, Other Special Events and Swimming Lessons**

These payments are all made via your Arbor account. You will receive details of the amount owed and the due date as well as information on the event via email in advance.