



SLADE

PRIMARY SCHOOL

Friday 8 May 2026

Term 5, Issue 3

Dear Parents and Families,

Although this has been a four-day week, we have certainly managed to fit a great deal in!

This week in school, we have been celebrating Deaf Awareness Week which is another valuable opportunity to further develop everyone's understanding of how to be deaf aware, both in school and within the wider community. The week was thoughtfully organised by our very own Mrs Martin, who provided a range of engaging activities for the children to take part in. A big thank you to Mrs Martin for all her time and effort, and for helping us to ensure that our school continues to be a fully inclusive environment.

A particular highlight this week was the Year 4 trip to London, where Phoenix and Sphinx Classes visited the Radha Krishna Hindu Temple to deepen their understanding of this term's RE topic on Hinduism. Feedback from the children, staff, and the parents who kindly supported the visit has been extremely positive. It was especially lovely to hear how the children were able to immerse themselves in a culture that many may not have experienced before.

As you know, we have continued to develop our programme of educational visits this year, with additional trips to support learning in RE and Geography. These experiences are designed to bring learning to life beyond the classroom, giving all children opportunities to engage with local communities and to visit places across the South East that they may not otherwise experience. Behind the scenes, Mrs Stephens is continuing to refine our future trip offer alongside the team, taking into account recent curriculum updates in line with DfE guidance, as well as the need to keep costs manageable in light of ongoing financial pressures. We aim to share the full programme of trips for the next academic year in Term 6, ahead of the summer holidays.

Looking ahead, I am pleased to confirm that the final INSET day for the next academic year has now been scheduled for Monday 2nd November. This should provide families with a slightly extended October half-term break.

Thank you for your patience while we ensured these dates were carefully planned to support the continued professional development of our staff team. Please also take a moment to note key dates for the next academic year in your diaries to ensure your children are in school when expected. Our whole school attendance this year is going extremely well however please be mindful of when holidays are booked as even though I completely understand the financial pressures during the holidays, there is clear guidance that I must follow as Headteacher, meaning holidays cannot be authorised and may result in a penalty notice from KCC.

Next week, our Year 6 pupils will be completing their End of Key Stage 2 statutory assessments. As shared in my letter earlier this week to the parents and carers of Year 6, these assessments are simply an opportunity for the children to demonstrate what they have learned during their time at primary school. We ask only that they try their best. We are incredibly proud of each and every one of them for the progress they have made during their time at Slade and by this time next week, it will all be over!

I hope you all have a lovely weekend. I can hardly believe that next week will be the penultimate week of Term 5. See you on the gate!

Viki

Monday 11 May - Thursday 14 May

Year 6 End of Key Stage 2 Statutory Assessment Tests.

See Page 4 for full details

Monday 11 May

- Year 6 SATs - English Grammar, Punctuation and Spelling

Tuesday 12 May

- Year 6 SATs - English Reading
- Pegasus Class Swimming

Wednesday 13 May

- Year 6 SATs - Maths (Arithmetic and Reasoning)
- Green Rangers Forest School Working Party

Thursday 14 May

- Year 6 SATs - Maths (Reasoning)
- Sphinx Class Swimming - This is the last session
- Hippogriff Class Forest School

Friday 15 May

- Pegasus Class Forest School
- Air House Non Uniform Day - See Page 10 for full details

Sunday 17 May

- 19:00 - Term 6 Bookings for Yeti's Wraparound opens - More details in next week's newsletter

Looking Further Ahead?

Our yearly planner can be found on Page 13 of today's newsletter and online via [the school website](#).

END OF KS2 STATUTORY ASSESSMENT TESTS

Next week, exam season kicks off at all levels of education in England. We are no different and our Year 6 children will be taking part in the annual End of Key Stage Assessments as they prepare to leave Key Stage 2 and transfer to Key Stage 3 at their new Secondary Schools.

The SATs provide each child in Year 6 the chance to show off all that they have learnt at primary school and whilst they take place under controlled conditions, we do not want the children to worry about the assessments. As Miss Garrett said when writing to parents of children in Griffin and Dragon Classes this week, 'We are incredibly proud of how hard they have worked, and our message to them is simple: just do your best. There is no need for them to feel worried or under pressure.'

We urge everyone to be in school on time to allow the tests to begin as soon as registration has been done.

To help support the children next week, it is advised to make sure that they have had a relaxed evening with the recommended period of sleep and a healthy breakfast before coming to school.

If there is an unavoidable reason for any member of Year 6 to attend school, then the normal process should be undertaken by emailing school via attendance@slade.kent.sch.uk as soon as possible and in any event before 08:30 of the morning of absence. The plans on how absent children will be able to take the assessment will be shared at that point with their parents.

The timetable for the SATs is the same in every school in the country. It looks like this:

Monday 11 May - English Grammar, Punctuation and Spelling

Tuesday 12 May - English Reading

Wednesday 13 May - Mathematics (Arithmetic and Reasoning)

Thursday 14 May - Mathematics (Reasoning)

We would like to wish all of the children in Year 6 much success next week - with the promise of much more fun ahead for the rest of this term and next as we head towards the summer holiday. This includes of course the Year 6 Residential Activity in Ashford; more plans of which were shared yesterday by Mrs Stephens.

Find out more about the SATs via The Education Hub from gov.uk:

[KS2 SATs 2026: What parents need to know – The Education Hub](#)



DEAF AWARENESS WEEK AT SLADE

This week has been Deaf Awareness Week nationally and all of the children at Slade have enjoyed a week of activities planned and delivered by Titan Hearing Impaired Provision Teaching Assistant and fully qualified British Sign Language (BSL) user and interpreter, Susie Martin.

Our massive thanks to Suzie and all of our children in the Titan Provision for their help as we supported this awareness week so close to the hearts of everyone at Slade.

The theme this year was, 'Right to Understand - Together we break barriers' and across the school we have been learning using a range of videos, games and other activities with each day having a particular focus and a different sign to learn.

Tuesday: Deaf Awareness and BSL

Sign of the Day: Together (Unite) :

media.spreadthesign.com/video/mp4/1/16239.mp4

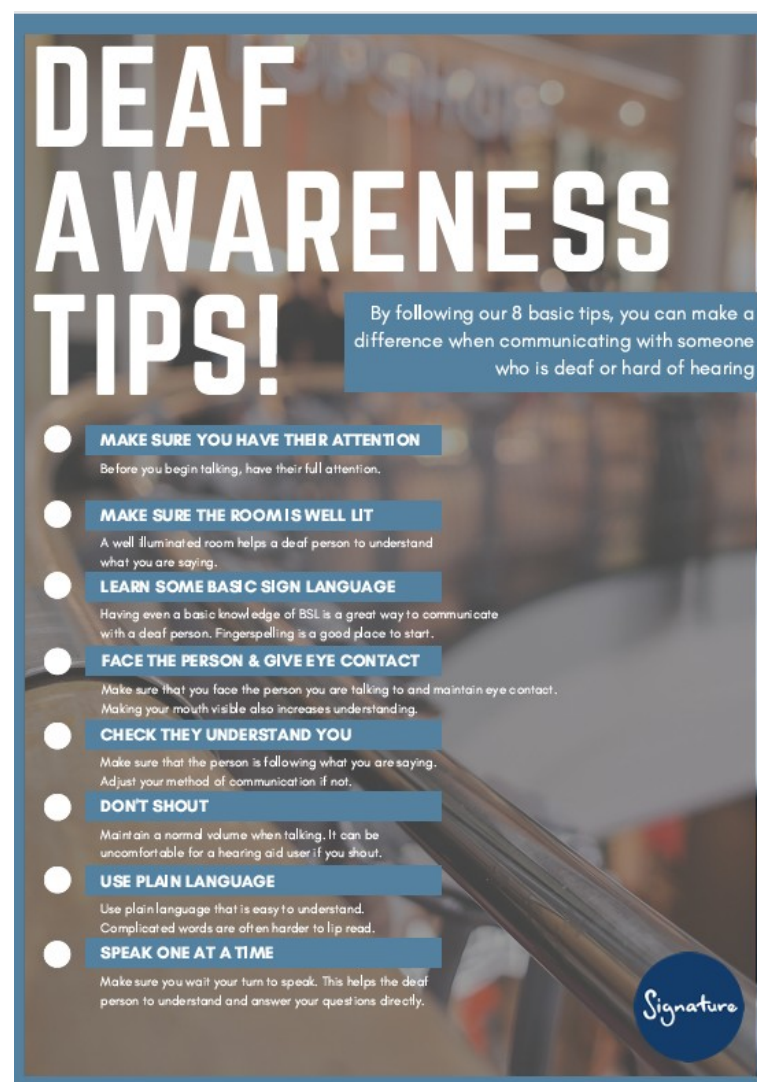
The learning looked at breaking down communication barriers, helping to create an inclusive environment. The children used this poster produced by deaf charity Signature to help them.

They also watched this video as an introduction to the week which features deaf children who use BSL as their first language as they discuss their Deaf cultural identity:

[Deaf Awareness Week - primary assembly resources - BBC Teach.](#)

The classes then practised some BSL using words which show emotions; just like these from the National Deaf Children's Society:

[British Sign Language \(BSL\) Signs for Feelings and Emotions - YouTube](#)



Wednesday: Silent Communication

Sign of the Day: Communication: media.spreadthesign.com/video/mp4/1/4748.mp4

Lip reading is very important because it helps many deaf people understand what is being said when they can't hear clearly. It supports communication, especially in everyday conversations where BSL or other support might not be available. See how well you can do on the game we played in school this week: [Testing Your Lipreading Skills - Lipreading.org](#).

Also on Wednesday, we played a sound awareness game using everyday sounds - this game (which you can play here: [Guess the Sound Game | 20 Sounds to Guess](#)) helps us to understand what it can be like for people who are deaf or have hearing loss. They have to work much harder to figure things out, especially when they don't have visual clues to help them.



As is normal on a Wednesday, Mrs Martin ran her successful and popular Signing Choir which takes place in the Deacon House Hall at 12:30 - it is a great way to learn BSL through some brilliant tunes in a fun and enjoyable way - all are welcome!

DEAF AWARENESS WEEK AT SLADE

Thursday: Understanding Deaf Experiences

Sign of the Day: Deaf Community: media.spreadthesign.com/video/mp4/1/252818.mp4.

Yesterday, we had the chance to watch the views of some high profile deaf role models; these proud members of the Deaf Community show us that hearing loss does not hold you back and that you can achieve anything you set your mind to - this proved to be an important message for our children about breaking barriers and believing in themselves.

We heard from:

Youtuber [Jazzy](#), [Punk Chef](#) and Rose Ayling-Ellis who all have a very special message for everyone at Slade.



Friday: Celebration and Sharing

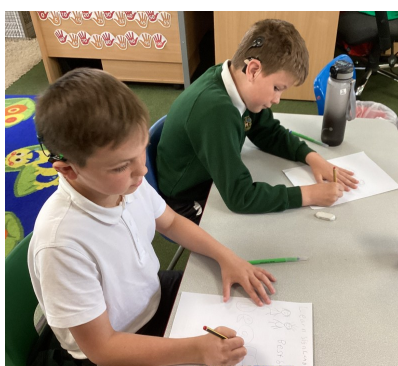
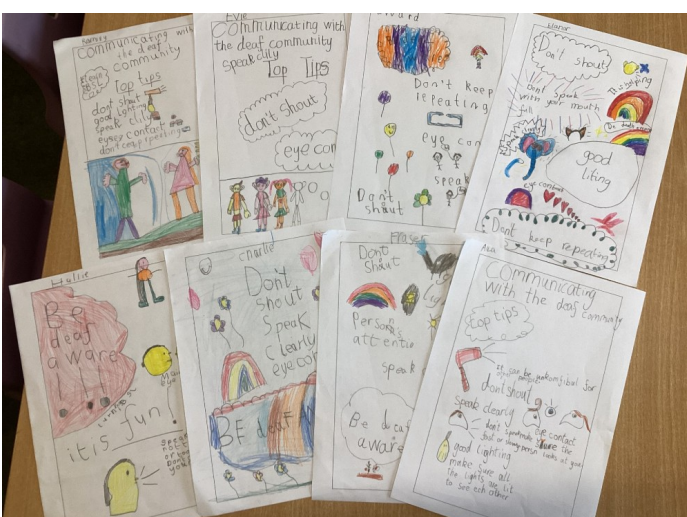
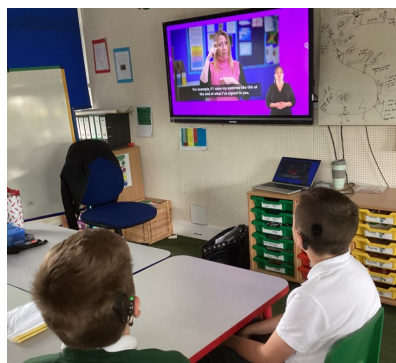
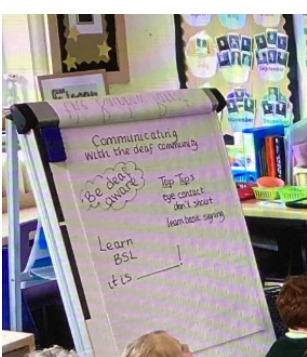
Sign of the Day: Respect: media.spreadthesign.com/video/mp4/1/18270.mp4

Today, the children have been having a recap and a chance to show how much they have remembered from the week.



They have been planning a poster with ideas including top tips for communicating with the deaf community, why it is important to be Deaf Aware and why we should all learn and use BSL.

The posters will be finished before the end of term and we will see some of the winning designs displayed around school and here in the newsletter in the coming weeks!



YEAR 4 VISIT RADHA KRISHNA TEMPLE

This week, our Year 4 classes have been in London visiting the Radha Krishna Hindu Temple in Soho Street, Central London.

They have been building on their learning into Hinduism this term and had a wonderful time exploring the temple and seeing their RE topic come to life thanks to the fantastic team who greeted us there.



The children in Sphinx and Phoenix Classes already had a lot of knowledge to share about the Hindu Devas or Demi Gods and they were taught a lot more about Hare Krishna, who is often revered as the Supreme God and is known for his blue skin.

In respect for the building, our visitors young and not so young all took off their shoes before entering. Our guide for the day explained in detail about the Hindu religion and in particular the Hare Krishna strand of Hinduism- you can see more details here: [About Krishna – Krishna.com](http://www.krishna.com).

They heard the music of the Mirdanga and the chanting in what was a very immersive experience for our Year 4 children.

Thankyou to all of the team at the Radha Krishna Temple for providing a lovely tour for our children and to all of the parents who gave up their time to help the visits on Tuesday and Wednesday run successfully.

Both classes were handed a book of chants used in worship, called 'Chant and be Happy' which they have enjoyed reading since the trip - some took the chance on the way home as you can see below!

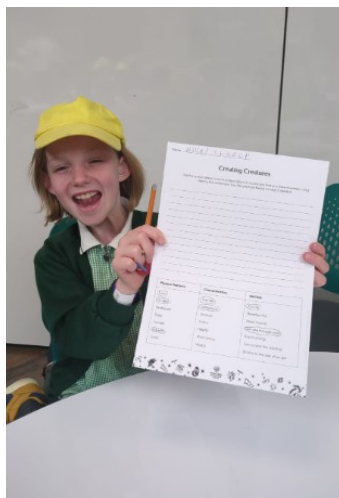
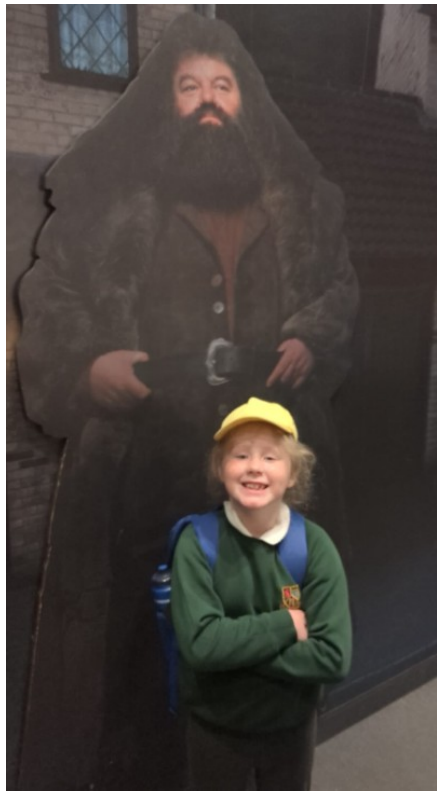


YEAR 3 AT THE STUDIOS

Yesterday, our Year 3 classes had their Summer Educational Visit to The Making of Harry Potter at the Warner Bros Studios in Hertfordshire.

Whilst there, they visited the Green Screen Room where they learnt how filmmaking happened before having a special Descriptive Writing Workshop with the team at the studios - they used props from the films to write a detailed setting description.

Following this, they went on their own tour of the studios, taking in all of the iconic scenes and objects from the world famous Harry Potter films.



With many thanks to the parents who gave up their day and evening to assist on this visit, which would not be possible without their support - thankyou!

Thanks also to the team at Starline Coaches in Maidstone for the transport to and from the venue - their support of our school trips this year is appreciated.

FAMILY AND HOME SAFETY



Designated Safeguarding Lead, Mrs Stephens.

Creating safe and healthy routines at home plays an important role in children's wellbeing and development. This week's safeguarding focus is on supporting children through positive family routines, healthy screen habits, and open communication.

The importance of routines

Children thrive when they know what to expect. Consistent routines can help children feel secure, calm, and ready to learn. Helpful routines may include:

- Regular bedtimes and wake-up times
- Family mealtimes together where possible
- Homework and reading routines
- Time for play, exercise, and relaxation

Simple routines can support emotional wellbeing and help reduce anxiety and stress.

Managing screen time

Technology is part of everyday life, but balance is important. Too much screen time can affect sleep, concentration, and mood. Families may find it helpful to:

- Create screen-free times, such as during meals or before bedtime
- Keep devices out of bedrooms overnight
- Encourage a mix of activities including outdoor play, reading, and hobbies
- Use parental controls and privacy settings on devices and apps
- Talk regularly about what children are watching, playing, or chatting about online

Building open communication

One of the best ways to keep children safe is by creating opportunities to talk openly at home.

- Encourage children to share worries or concerns
- Listen calmly and without judgement
- Remind children that they can always speak to a trusted adult
- Check in regularly about friendships, school, and online experiences

Healthy habits for the whole family

Children learn by watching the adults around them. Modelling healthy habits—such as balanced screen use, kindness, and positive communication—can make a big difference.

Top tip for families

Try having a short daily "check-in" with your child. A simple conversation about the best part of their day and anything they found difficult can help children feel supported and connected.

By working together to create safe, balanced, and supportive home environments, we can help children feel happy, secure, and ready to thrive.

ACTION FROM KS1 RAPID FIRE CRICKET



This Cricket Festival was held at Skinners Kent Primary School on Tuesday morning and was enjoyed by schools across West Kent.

With thanks to the hosts and to the parents who were able to take time out of their morning to be the team transport. Your support is never taken for granted.

CONGRATULATIONS, AIR HOUSE

Air House are current champions of the Housepoint competition in school; holding the trophy safter success in Term 4.

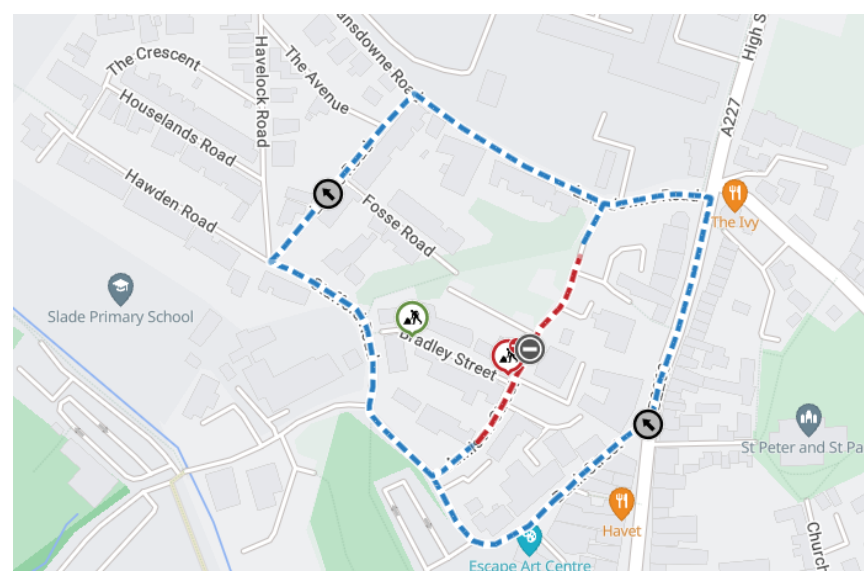
House Captains Alisha and Oscar have chosen their competition winning treat to be a Non Uniform Day for all of the pupils in Air House. This will take place next Friday (15 May).

Therefore, all Air House members are invited to wear non uniform clothing next Friday. Parents can check which house their child belongs to by looking at the pupil profile on your Arbor account.

ANNISON STREET CLOSURE

We would like to let you know that Annison Street will be closed to all through traffic from Monday 11 May through to the end of the month due to Highway Works.

The closure will operate 24 hours a day through this period which means all traffic will be using the 'old route' before Annison Street was opened up to through traffic.



When travelling in to The Slade, access from the High Street will be via Castle Street only.

On the way out, access back to the High Street in all directions will be via Bank Street only.

Please allow extra time for your journey to and from school up until the work is completed on 31 May.

You can keep up-to-date with progress of these roadworks and those across Kent by logging on to the KCC website: [Roadworks - Kent County Council](https://www.kent.gov.uk/roadworks).

WINNERS OF THE WEEK

TED AND PUP

Attendance: Phoenix Class in Year 4

Punctuality: Phoenix Class in Year 4

SUPERSTARS OF THE WEEK



EYFS: Stefania and Dean
Year 1: Phoebe and Maya



Year 2: Reyona and Max
Year 3: Lily and Ava



Year 4: Aidan and Saffy
Year 5: Emma and Aliya
Year 6: Oscar and Reece

HOUSE POINTS THIS WEEK

1. Fire- 440 Points
2. Water - 396 Points
3. Air - 347 Points
4. Earth - 297 Points

TIDY CLASSROOMS

As judged by our House Captains

Key Stage 1: Elmer Class in EYFS

Key Stage 2: Hippogriff Class in Year 3

WALK ON WEDNESDAY

The number of pupils walking, riding or scooting to or part of the way to school through Park and Stride.

Key Stage 1 - Gnome Class (25/30)

Key Stage 2 - Year 6 Class (26/30)

CELEBRATING OUR SCHOOL VALUES

Special congratulations to the following children for earning a certificate from Miss Garrett for demonstrating that they understand and constantly show our school values:

Reyona and Lily for Kindness

Ava for Resilience



TIMES TABLES ROCKSTARS CHAMPIONS



Individual Champions This Week

Year 2: Martin (Sprite) Year 5: Melwyn (Wyvern)

Year 3: Joni (Hippogriff) Year 6: Oskar (Dragon)

Year 4: Cillian (Phoenix)

Summer Class Competition (Current Table)

DAILY MILE TERMLY COMPETITION



Class Champions This Week

Key Stage 1: Gnome (280 Laps)

Key Stage 2: Sphinx (2052 Laps)

Summer Competition (Weeks Won)

Key Stage 1: Elf, Sprite, Gnome (1)

Key Stage 2: Wyvern (1), Sphinx (1)

Attendance

Over a school year, we are due to be open for 190 days which equates to 380 sessions.

Registration takes place at 08:50 in the morning and after lunch in the afternoon.

Attendance is affected if a pupil is not present at school for any whole session including registration.

Please try not to book routine medical appointments or holidays (even travel) in school time. You should notify us of any planned absence immediately via attendance@slade.kent.sch.uk

The class with the best attendance each week will win Attendance Ted.

Double again, olé olé! Congratulations to Phoenix Class who were all in school every minute of every day this week - 100%ers with no late marks - Year 4 loving school!



Late Children This Week = 11



Our Attendance Target = 97.0%

Our Attendance This Year = 95.8%

Our Attendance This Week = 97.3%

Attendance Ted This Week

Position	Class	Year Group	Attendance this Week
1	Phoenix	Year 4, Miss Taylor and Miss Maple	100%
2	Elmer	EYFS, Mrs Mulhern	99.2%
2	Gruffalo	EYFS, Mrs Pearson	99.2%
4	Dragon	Year 6, Mrs Worley	98.8%
5	Elf	Year 1, Mrs Hitchcock	97.9%
5	Pixie	Year 1, Mr Clark	97.9%
7	Sprite	Year 2, Mrs Shrimpton	97.5%
8	Pegasus	Year 3, Miss Meers and Miss Elliott	97.0%
9	Hippogriff	Year 3, Mr Louth	96.7%
9	Hydra	Year 5, Mr Duffin	96.7%
9	Griffin	Year 6, Mrs Fordyce	96.7%
12	Gnome	Year 2, Mrs Manktelow	95.8%
13	Sphinx	Year 4, Mrs Burnside	94.6%
13	Wyvern	Year 5, Miss Hall and Mrs Potter	94.6%

Punctuality

Registers are taken at 08:50. If children arrive after this time, they are registered late.

It is important that the children are at school on time every day to prevent disruption and upset to their day and for the rest of their class.

Punctuality Pup is awarded to the class with the best punctuality each week.



Punctuality Pup This Week

Well done to all of the classes with no late pupils this week: Phoenix, Dragon, Pixie, Pegasus, Griffin

Our best week for the number of late marks for quite sometime - just the 11 this week with 5 classes recording no late marks at all. Phoenix take the Punctuality prize as they had the best attendance of the five. Well done to everyone who consistently arrives at school on time, ready to learn!

September	October	November
		

December	January	February
		

March	April	May
		<p>Monday 11 - Thursday 14 - KS2 SATs Week</p> <p>Monday 11 - English Grammar, Punctuation and Spelling</p> <p>Tuesday 12 - English Reading</p> <p>Wednesday 13 - Maths Arithmetic and Reasoning</p> <p>Thursday 14 - Maths Reasoning</p> <p>Friday 15 - Air House Reward Day</p> <p>Thursday 21 - Tonbridge Swimming Gala</p> <p>Friday 22 - Last Day of Term 5</p>

June	July
<p>Monday 1 - First Day of Term 6</p> <p>Monday 1 - Friday 5 - Multiplication Screening for Year 4 pupils</p> <p>Monday 8 - Friday 12 - Phonics Screening for Year 1 pupils</p> <p>Wednesday 10 - Year 4 Hands on History Workshop</p> <p>Friday 12 - Year 2 Kent Life Visit</p> <p>Thursday 18 - Sports Day</p> <p>Thursday 25 - Reserve Sports Day</p> <p>Tuesday 30 - EYFS26 New Parents Information Meeting</p>	<p>Wednesday 1 - EYFS26 New Parents Information Meeting</p> <p>Thursday 2 - Transition Day</p> <p>Tuesday 7 - Open Evening (17:00 - 19:00)</p> <p>Saturday 11 - PTA Music Festival (15:00 - 18:30)</p> <p>Monday 13 - School Reports Sent to Parents</p> <p>Monday 13 - Year 6 Production (18:30)</p> <p>Wednesday 15 - Year 6 Production (18:30)</p> <p>Friday 17 July - Last Day of Term 6</p>

More information about these events will appear nearer the time.

Events and dates are subject to change

[Full Online Calendar](#)

[2025/26 Term Dates](#)

In class

My child's class learning, class activities, lessons, homework or pastoral support; concerns about bullying and behaviour

classname@slade.kent.sch.uk

Absence

Sickness Reporting, Absence Requests and all Medical Appointments

attendance@slade.kent.sch.uk

School Office

General Enquiries and School Events

office@slade.kent.sch.uk

Slade PTA

Slade PTA

pta@slade.kent.sch.uk

Wraparound

Yeti's Wraparound: Childcare Voucher questions and all General Enquiries

yetis@slade.kent.sch.uk

Sport and Activity

Extra Curricular Activity Clubs (booking and queries) Sports Events and Representative Sports Tournaments

sportsandactivities@slade.kent.sch.uk

Admissions

In Year and September EYFS Admissions

admissions@slade.kent.sch.uk

Finance

Childcare Vouchers, Payments for Yeti's and School Meals and School Trips and Special Lessons

finance@slade.kent.sch.uk

School Lunches

Comments and questions about school meal provision from Emma's Kitchen

emma@emmaskitchen.co.uk

Family Liaison

If you would like the services of our Family Liaison Officer, Libby, or just wish to talk over a family issue in confidence

flo@slade.kent.sch.uk

Complaints

For all complaints, please refer to the [Complaints Policy](#) then contact us:

slaws@slade.kent.sch.uk

GDPR

Reporting of GDPR Breaches, details of our privacy policy and for Subject Access Requests

slaws@slade.kent.sch.uk

Payments

School Dinners

School Dinners provided by Emma's Kitchen are free to the following groups:
 EYFS Classes, Year 1 Classes, Year 2 Classes, EYFS, KS1 and KS2 pupils eligible for benefits related Free School Meals
 School Dinners provided to KS2 (Year 3-6) children are charged at £2.60 per meal.
 Credit should be loaded onto the Meals section of your Arbor account in advance of a meal being taken.

Yeti's Wraparound Provision (Breakfast and After School Clubs)

Breakfast Club is charged at £5.25 per session After School Club is charged at £5.25 per session:
 After School Club Session 1 (15:30 - 16:30), Session 2 (16:30 - 17:30)
 Payment and Booking should be made via your online Arbor account.
 For full information please see our website: [Breakfast and After School Clubs](#)

School Visits, Other Special Events and Swimming Lessons

These payments are all made via your Arbor account. You will receive details of the amount owed and the due date as well as information on the event via email in advance.