



SLADE

PRIMARY SCHOOL

Friday 19 June 2026

Term 6, Issue 3

Dear Parents and Families,

It was so lovely to see so many of you in school yesterday for our annual Sports Day, supporting and cheering on your children during the track and field events on the school field.

A huge well done to all of the children, who demonstrated extraordinary teamwork alongside our school values of kindness, resilience, honesty and, of course, inclusion. We are incredibly proud that we are able to make these events as inclusive as possible, and we are extremely fortunate to have such dedicated Year 6 Sports Captains, ably assisted by our Year 5 and 6 Sports Crew. Quite honestly, they play a huge part in ensuring the day runs as smoothly as it does! We are always looking for ways to make Sports Day as child-led as possible, so a special shout-out goes to Paul in Year 6, who volunteered to take on the role of compère for the morning session. He did a fantastic job, and I'm hoping we can persuade him to return next year and host the whole day!



Thank you also to the wonderful Slade Team, proudly sporting their green PE tops, for all the hard work that has gone into PE lessons leading up to Sports Day and for their efforts on the day itself. A particular mention must go to Mrs Ball for leading us all so brilliantly.

We are quickly working our way through the key events of the summer term and, hopefully, by now you have received the letter I sent on Monday outlining the class arrangements for September. As I mentioned in that letter, transition arrangements at this time of year are incredibly important. I will be writing to you again next week with further details about our Transition Day on 2nd July, along with information about the other activities and events planned to support the pupils.

Excitingly, this weekend our Year 6 pupils will travel down the M20 to Ashford for their long-awaited PGL residential. Having visited myself last year, I know they are in for a real treat, with four action-packed days of fantastic activities and, most importantly, the opportunity to create memories that will last a lifetime. Thank you in advance to the staff who are generously giving up their own time and spending time away from their families to accompany the children on this trip. If the weather remains as glorious as it has been recently, they certainly won't have too much to complain about!



Finally, Sid and Barnaby in Year 6 came up with a wonderful idea a few months ago to raise money for our school rabbits. Their aim is to provide them with a much larger hutch than they currently have, and we are delighted to support their initiative. Therefore, next Friday we will be holding an own-clothes day to help raise funds for this fantastic cause. Please read on in the newsletter to find out more, but for now, a huge thank you and well done to the boys for making this happen.

I wish you all a wonderful weekend and look forward to seeing you next week!

Viki

Monday 22 June

- Year 6 Residential Activity Week Day 2

Tuesday 23 June

- Year 6 Residential Activity Week Day 3
- Pegasus Class Swimming - This is the final session of this year's lessons

Wednesday 24 June

- Year 6 Residential Activity Week Day 4
- Green Rangers Forest School Working Party

Thursday 25 June

- Elf Class Forest School
- Hippogriff Class Swimming - See Page 5 for more details
- 15:30 - KS1 Rugby Festival - Details known to participants

Friday 26 June

- Money for Bunnies Non Uniform Day - Please see page 5 for full details and to donate
- Pixie Class Forest school
- NHS EYFS Vision Screening

Looking Further Ahead?

Our yearly planner can be found on Page 17 of today's newsletter and online via [the school website](#).

WELCOME TO SLADE, ROMAN

We were delighted to welcome Roman to Slade on Monday for his first day with us, joining Miss Meers and Miss Elliott in Year 3.

Roman has quickly settled and we hope that he has enjoyed his first week with us with his new friends.

Our warm welcome is extended to all of Roman's family, with who we look forward to sharing a long, happy and successful relationship.



HAVE A GREAT TIME, YEAR 6

This weekend, our Year 6 children will be heading off on their 4 day Activity Week at the PGL facility at Grosvenor Hall, Ashford.

We hope that they all have a fantastic time and we look forward to hearing all about it when they get back.

A quick reminder to parents that drop off in Ashford is 15:30 on Sunday, with collection at 13:30 on Wednesday afternoon.

Sun 21 Jun	Mon 22 Jun	Tue 23 Jun	Wed 24 Jun
☀️	☀️	☀️	☀️
28° 18°	31° 18°	30° 17°	28° 17°

The weather promises to be very sunny for the time that Dragon and Griffin Classes are away with heat warnings in place on Monday and Tuesday, so we would like to make sure that every child brings with them sun cream and a sun hat for good protection during the day.

TRANSITION DAY: THURSDAY 2 JULY

On Monday, Miss Garrett released details of next year's teaching team line up. This information is shared again on page 6 of today's newsletter alongside a reminder of next year's term dates on page 7.

The children will all have a chance to spend the day with their new teacher in next year's classroom on the recognised Transition Day which is Thursday 2 July. On this day, we also welcome our newest and youngest learners from the September Early Years intake- they will be in for a shorter time either for a morning or an afternoon session, with details released to parents as soon as it is available.

In past years, secondary schools have also followed the standard diary date for their own transition days - inviting in the Year 6 children who will be joining them in September - although this year a few of them have gone rogue!

If your secondary school transition day is not on Thursday 2 July

Please let us know via office@slade.kent.sch.uk so we know how many Year 6 children will be here on that day - this will allow us to plan staffing accordingly.

You should also let us know which dates your child will not be here, but on the new transition day at secondary school. This should be sent to attendance@slade.kent.sch.uk.

MONEY FOR BUNNIES



A reminder that next Friday, 26 June will be a non uniform day across the school as we aim to raise £250 to provide Ziggy and Dibbles, the school bunnies, with a brand new home!

The fundraising effort is the idea of Pet Crew members Sid and Barnaby who have sourced a new house and are inviting everyone to come to school in non uniform clothes in exchange for a £1 donation towards the fund which can be made online via: [New home for Ziggy and Dibbles | Slade School PTA](#).



In order to ramp up interest and awareness of their project, they have also launched an art competition. They are asking for the creative minds at Slade to draw, paint or create a piece of rabbit related art - there will be surprise prizes up for grabs as well, which will be awarded in next week's celebration assembly. Entries can be submitted in various ways: to the school office, to Mrs Pearson in Pegasus Class or to Mrs Fordyce in Griffin Class on or before Thursday 25 June.

CLASS AND GROUP PHOTOGRAPHS



On Wednesday, we said hello again to Matthew Walker from Portrait Days Photography.

Matt was here to take the class group photographs, back in the beautiful sunshine on the school field.

Your child will have brought home the order form this afternoon. All you have to do is scan the QR code or log on to www.pics4schools.com and enter your security code from the order form. There, you will be able to view the images available and order.



Free delivery to school is available for all orders made before 23:59 on Sunday 5 July. Orders can be made after this date, but will attract a delivery charge.

YEAR 3 SWIMMING

Next Tuesday sees the last swimming session in this year's calendar for Miss Meers and Miss Elliott's Pegasus Class - we hope that the children have enjoyed their lessons at Tonbridge Pool and we look forward to letting you have details of next year's lessons soon - the organisation for all Key Stage 2 swimming from September is already nearly complete.

Mr Louth's Hippogriff Class are the last ones swimming and still have a few lessons to come, although as parents know these are spread over different days. A reminder that Hippogriff Class are swimming on the following afternoons which include two weeks of two lessons:

Thursday 25 June (14:00)

Tuesday 30 June (14:30) and Friday 3 July (14:00)

Tuesday 7 July (14:30) and Thursday 9 July (14:00)



TEACHING LINE UP 2026/27

EYFS



Danielle Mulhern
Elmer Class



Natalie Pearson
Gruffalo Class

Year 1



Thomas Clark
Pixie Class



Julie Hitchcock
Elf Class

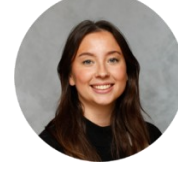
Year 2



Amy Manktelow
Gnome Class



Jackie Shrimpton
(Until October 2026)



Taylor Ellis
(from October 2026)

Year 3



Sarah Meers & Rosie Elliott
Pegasus Class



Nick Louth
Hippogriff Class

Year 4



Grace Worley
Phoenix Class



Tina Hall
Sphinx Class

Year 5



James Duffin & Alison Burnside
Hydra Class



Abigail Taylor & Jess Maple
Wyvern Class

Year 6



Helen Lipman
Dragon Class



Trac Fordyce
Griffin Class

Specialist Resource Provision



Jayne Laker
Teacher of the Deaf

2026/27 TERM DATES

The school year consists of 190 days split into 380 sessions (morning and afternoon).

We use the standard Kent County Council calendar for our term dates, adding in the five INSET Staff Training Days.

Term 1

First Day: Thursday 3 September 2026

Last Day: Friday 23 October 2026

October Break:

Monday 26 October - Monday 2 November

Term 2

First Day: Tuesday 3 November 2026

Last Day: Friday 18 December 2026

Christmas and New Year Holiday:

Monday 21 December - Monday 4 January

Term 3

First Day: Tuesday 5 January 2027

Last Day: Friday 12 February 2027

February Break:

Monday 15 February - Friday 19 February

Term 4

First Day: Monday 22 February 2027

Last Day: Thursday 25 March 2027

Easter and Early Summer Holiday:

Friday 26 March - Friday 9 April

Term 5

First Day: Monday 12 April 2027

National Holiday: Monday 3 May

Last Day: Friday 28 May

Summer Terms Break:

Monday 31 May - Friday 4 June

Term 6

First Day: Monday 7 June 2027

Last Day: Tuesday 20 July 2027

Summer Holiday begins:

Wednesday 21 July

All dates listed here are inclusive.

Slade have allocated the following as INSET Staff Training Days:

Tuesday 1 September, Wednesday 2 September, Monday 2 November, Monday 4 January, Wednesday 21 July

Where possible, medical appointments should be made within school holidays. Vacations should always be taken during the holiday times in accordance with our [Attendance Policy](#).

We should be notified of all planned and daily absences via attendance@slade.kent.sch.uk at the earliest possible opportunity.

FRIENDSHIP DIFFICULTIES



Designated Safeguarding Lead, Mrs Stephens.

Friendships play a vital role in children's happiness, confidence and sense of belonging. Through friendships, children learn important life skills such as sharing, cooperation, empathy and conflict resolution. However, as children grow and develop, it is normal for friendships to change and for occasional disagreements to occur. As parents and carers, we can help children navigate friendship challenges and develop the skills needed to build positive, healthy relationships.

Understanding Friendship Difficulties

It is important to remember that not every disagreement between friends is bullying. Friendship fallouts can happen when children have different opinions, misunderstand each other or struggle to manage their emotions. These experiences can help children learn valuable social skills when supported appropriately.

How You Can Support Your Child:

Listen Calmly and Carefully

If your child is upset about a friendship issue, give them time to explain what has happened. Listening without immediately trying to solve the problem can help children feel heard and understood.

Encourage Problem-Solving

Ask questions such as:

- "What do you think happened?"
- "How do you think your friend felt?"
- "What could you do to make things better?"

Supporting children to think through solutions helps build resilience and independence.

Help Children Understand Different Perspectives

Friendship disagreements often involve misunderstandings. Encouraging children to consider how others may be feeling can help them develop empathy and strengthen relationships.

Promote Positive Friendships

Talk to your child about the qualities of a good friend, such as kindness, honesty, respect and inclusivity. Remind them that healthy friendships should make them feel valued and supported.

Encourage a Range of Friendships

Having different friendship groups and opportunities to socialise can help children feel more confident and reduce reliance on one particular friendship.

When to Seek Support

While friendship disagreements are a normal part of growing up, it is important to seek support if your child:

- Appears persistently unhappy or anxious about friendships.
- Regularly feels excluded or isolated.
- Experiences repeated unkind behaviour.
- Is reluctant to attend school because of friendship concerns.

If you have any concerns about your child's friendships or wellbeing, please speak to your child's class teacher. Working together, we can help children develop the confidence and skills they need to build positive relationships.

Family Challenge of the Week

Ask your child: "What makes a good friend?" Together, create a list of friendship qualities and discuss how these can be shown at home, at school and in the wider community..

PTA SUMMER MUSIC FESTIVAL: SATURDAY 11 JULY

PTA PRESENTS

SUMMER MUSIC FESTIVAL

SATURDAY 11TH JULY
3PM - 7PM

BRING A PICNIC AND A BLANKET



PIMMS & PUNCH TENT ● GLITTER TATTOO PARLOUR
● HUMAN FRUIT MACHINE ● WELLY WANTING
CHILDRENS CRAFT STALL ● WHACK-A-RAT ●
BAKE SALE ● A CALM ZONE ● FUDGE STALL

3PM - 6PM

THE SILENT DISCO COMPANY
.co.uk

WITH THANKS

TONBRIDGE
CARPETS
&
FLOORING
STUDIO



ALL MONIES RAISED
WILL GO TOWARDS
BOOK NOOKS
AROUND THE SCHOOL
FOR THE CHILDREN
AND READING ANGELS



6PM - 7PM



PLUS PERFORMANCES FROM

DANCEMODE.CO

NANCY WEI GEORGE'S
DRAMA & MUSICAL THEATRE GROUP

SLADE PRIMARY SCHOOL
SIGNING CHOIR

SLADE PRIMARY SCHOOL
CHOIR

MusicStation
Contemporary Music Tuition
www.musicstation.pro

Trinity Dance
Dance, Gymnastics & Cheerleading Coaching

SCHOOL FIELD, SLADE PRIMARY SCHOOL
(HAWDEN ROAD ENTRANCE)
PLEASE NOTE THIS EVENT IS FOR SLADE FAMILY & FRIENDS ONLY

RUNNING ORDER

3PM ARRIVAL

3.30PM - 3.40PM SIGNING CHOIR

5 MIN BREAK

3.45PM - 4PM DANCEMODE KS1

4PM - 4.15PM DANCEMODE KS2

5 MIN BREAK

4.20PM - 4.30PM NANCY WEI GEORGE'S DRAMA & MUSICAL THEATRE GROUP

5 MIN BREAK

4.35PM - 4.45PM TRINITY DANCE

5 MIN BREAK

4.50PM - 5PM TRINITY CHEER

10 MIN BREAK

5.10PM - 5.20PM CHOIR

5 MIN BREAK

5.25PM - 5.45PM INDIVIDUAL MUSIC PERFORMANCES

1. WILFRED HOGG, GRADE 1 MUSIC STATION PUPIL, ELECTRIC GUITAR 'JERK IT OUT'
2. ARJUN POOVANNAN, GUITAR & VOCALS, 'MICHAEL JACKSON'
3. YAO ZHANG, VIOLIN, 'ROMAZE'
4. AAZEEN KHAN, VOCALS

6PM - 7PM LIVE BAND: THE TONICS

7PM FESTIVAL ENDS

SCHOOL FIELD, SLADE PRIMARY SCHOOL
(HAWDEN ROAD ENTRANCE)

SPORTS DAY 2026

Thankyou to the hundreds of you who attended our two sports day events yesterday in what turned out to be a day of two halves weather wise - but a fun filled day all the same, made all the more special by having so many families turn out to support as every child at Slade competed in a range of mufti skills events such as football or hockey dribble, the ever popular space hoppers and obstacle course as well as bean bag and javelin throws. This was followed by the yeargroup races and relays. Everyone took part across the event with a friendly and competitive edge but with support for each other and superb sportsmanship shown all day.

Where there is competition, there are winners - thankyou and well done to all of the children for cheering and clapping when the trophies were handed out; even when it was not their class to be the winners this year. It was a case of eventually after years of trying for Year 6 teacher Mrs Fordyce, who won her first ever yeargroup sports day yesterday, so special congratulations to Griffin Class on their last Sports Day at Slade!



EYFS
Elmer Class



Year 1
Pixie Class



Year 2
Sprite Class



Year 3
Hippogriff Class

Year 4
Phoenix Class



Year 5
Hydra Class

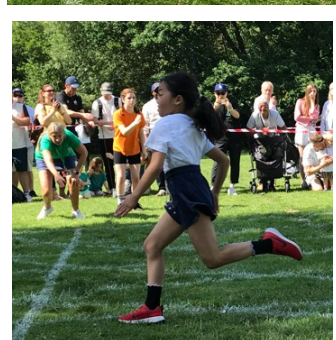
Year 6
Griffin Class



In addition to the class awards, the class teachers and support staff have been busy nominating pupils for sportsmanship awards for actively supporting teammates and opponents throughout Sports Day.

These awards will be given out in a special headteacher's assembly at the beginning of next week and we will announce the winners in next week's newsletter.

SPORTS DAY GALLERY



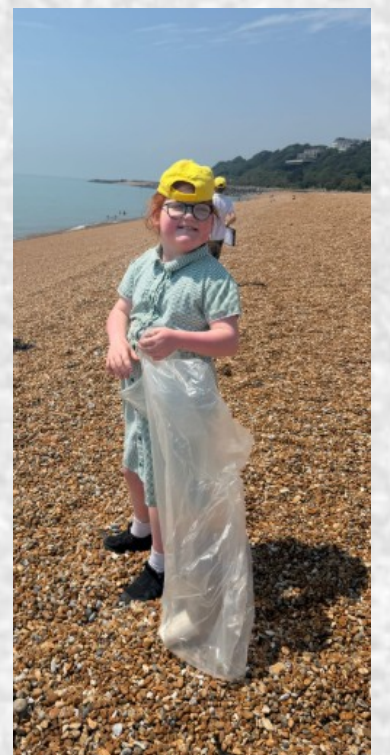
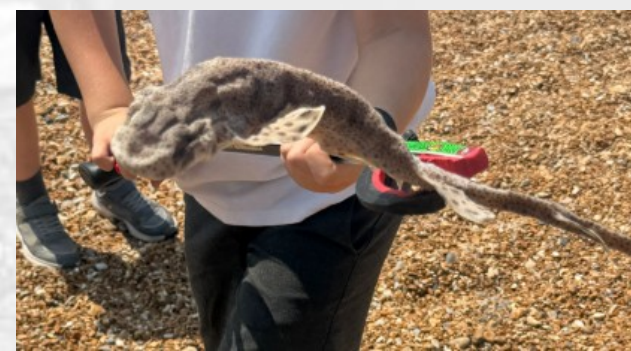
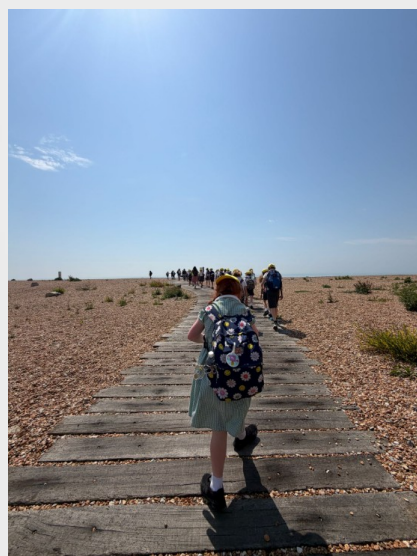
YEAR 5 IN FOLKESTONE

Today, Hydra and Wyvern Classes have been on their Educational Visit to Folkestone, where they have been building on their coasts and environment studies this term. They used plenty of cross curricular skills as they collected data, before transferring the information collected onto accurate sketch maps whilst being careful to safely assess and avoid potential risks during the fieldwork stage of the day.

Visiting a local marine environment, Year 5 asked themselves; 'How littered is that environment?' Data collection included tallying the different kinds of litter and evidencing this with photographs and plotting this onto a ariel map of the area to show distribution. The big question asked from the fieldwork was, 'From the observations do you think litter could be harming animal and plant life, why and how?'

The children will further ponder this question during the post visit lessons next week and we look forward to reading their findings.

Thankyou to Southeastern for the transport today - the classes won't be back until after the newsletter has been published, but we have full faith in the train arriving right on time!



NEW HOLIDAY CLUB AT SLADE

A summer full of stories starts here. This summer, Holiday HQ launches at Slade Primary School bringing six weeks of high energy adventures, creative challenges and unforgettable experiences - with something new to discover every day.

They are the words of Junior Adventure Group (JAG) who will be running their new Tonbridge based summer holiday club exclusively for pupils at Slade which will run between 20 July and 28 August.

There are limited spaces available which you can secure now by clicking on this link:

[Log In | Junior Adventures Group](#)

More information about the Holiday HQ at Slade can be found here:

[Slade Primary School | Junior Adventures Group UK](#)



Ofsted
Registered

ADVENTURE
DISCOVER
PLAY
CREATE

HOLIDAY HQ

A SUMMER FULL OF STORIES

STARTS HERE

NEW THEMES EACH WEEK!

STEM SCIENCE & DISCOVERY
SUMMER SPLASH
URBAN SPORTS
ULTIMATE SPORTS
WORLD DISCOVERY & CULTURE
ENVIRONMENT & NATURE

Multi-Activity Summer Holiday Camp
Slade Primary School | July - August

A Summer Full of Stories Starts Here!

JAG Summer Camp is a multi-activity holiday experience designed for primary-aged children, packed with variety, energy and creativity. With new themes each week, every day brings something different from high-energy games and team challenges to hands-on making and creative activities.

STEM
SCIENCE & DISCOVERY

SUMMER
SPLASH

URBAN
SPORTS

ULTIMATE
SPORTS

WORLD DISCOVERY
& CULTURE

ENVIRONMENT
& NATURE

EACH DAY IS DIFFERENT!

A mix of fun, creative and active experiences designed around choice and variety:

MAKE & TAKE

Craft your own unique creation and take it home! Designed as a Holiday HQ souvenir to unlock creativity and imagination.

ARTS & CRAFTS

Get hands-on in our Craft Zone activities, designed as a Holiday HQ souvenir to unlock creativity and imagination.

THEMED ACTIVITIES

Dive into a new adventure every day with our exciting daily themed activities!

SKILL ZONE

Skill Zone is a daily session designed to build confidence, curiosity, and teamwork through themed challenges and purposeful play.

BOOK NOW! We understand that flexibility and affordability matter. That's why we offer a range of options to help make summer work for you.

- ✓ 48-hour cancellation policy
- ✓ Tax-Free Childcare accepted
- ✓ Weekly booking discounts
- ✓ Flexible bookings
- ✓ Childcare Vouchers accepted
- ✓ 10% sibling discount

JUNIORADVENTURESGROUP.CO.UK
 0333 577 1533
 HELLO@JUNIORADVENTURESGROUP.CO.UK

WEEK 1 W/C 20th - 24th JULY

	MONDAY	TUESDAY	WEDNESDAY	THURSDAY	FRIDAY
HERO ACTIVITY	Egyptian Pyramid Building	Korean Street Games	Jungle Animal Football	Canadian Air Hockey	Worldwide Flag Memory Game
ARTS & CRAFTS	My Travel Passport	Dubai Skyscraper Prints	Glowing Planet Lights	Day of the Dead Skeletons	Lunar New Year Dragon Dance
CHILDREN'S CHOICE	Inspired by children's interests, ideas, and choices through child-led play and exploration. Start with an idea. Shape the adventure. Share the discovery. START SHAPE SHARE				
SKILL ZONE	Club Sports Tournament	World Landmarks Escape Room	Flamingo Switch	Outback Animal Relay	Haka Challenge

WEEK 2 W/C 27th - 31st JULY

	MONDAY	TUESDAY	WEDNESDAY	THURSDAY	FRIDAY
HERO ACTIVITY	Ultimate Frisbee Games	No Net Volleyball	Rapid Rounders	Handball Tennis	Human Hungry Hippos
ARTS & CRAFTS	Flick Football Challenge	Summer Sports Collage Art	Design Your Own Sports	Design a Sports Board Game	Pin the Play
CHILDREN'S CHOICE	Inspired by children's interests, ideas, and choices through child-led play and exploration. Start with an idea. Shape the adventure. Share the discovery. START SHAPE SHARE				
SKILL ZONE	Capture the Flag Territory Arena	Football Finishing Dice	Frisbee Tic Tac Toe	Medic Dodgeball	Sport Day Showdown

WEEK 3 W/C 3rd - 7th AUGUST

	MONDAY	TUESDAY	WEDNESDAY	THURSDAY	FRIDAY
HERO ACTIVITY	Oobleck Science	Spaghetti Tower Builders	Robot Obstacle Course	Boomerang Madness	Watermelon Explosion Experiment
ARTS & CRAFTS	String Spinners	Paper Cup Grapple Hooks	Wooden Model Builders	Pixel Characters Collages	Balloon Squeezes
CHILDREN'S CHOICE	Inspired by children's interests, ideas, and choices through child-led play and exploration. Start with an idea. Shape the adventure. Share the discovery. START SHAPE SHARE				
SKILL ZONE	Paper Glider Making	Paper Plate Mazes	Team Reaction Ball Drop Challenge	Balloon Rocket Races	Static Electricity Balloon

WEEK 4 W/C 10th - 14th AUGUST

	MONDAY	TUESDAY	WEDNESDAY	THURSDAY	FRIDAY
HERO ACTIVITY	Beach Ball Blaster Races	Crab Beachball	Pool Noodle Limbo	Pass & Splash	Sponge Boat Races
ARTS & CRAFTS	Sponge Water Bombs	Jellyfish Windsocks	Sea Party Model Painting	Pool Noodle Crabs / Fish	Bubble Painting Art
CHILDREN'S CHOICE	Inspired by children's interests, ideas, and choices through child-led play and exploration. Start with an idea. Shape the adventure. Share the discovery. START SHAPE SHARE				
SKILL ZONE	Water Relay Challenge	Splash Blaster Battle	Water Gun Cup Races	Human Ring Toss	Crazy Colour Run

WEEK 5 W/C 17th - 21st AUGUST

	MONDAY	TUESDAY	WEDNESDAY	THURSDAY	FRIDAY
HERO ACTIVITY	Tag Rugby	Z Ball Reflex Challenges	Street Ping Pong	Street Football (5v5)	Floor Basketball
ARTS & CRAFTS	Balloon Tennis	Spray Chalk Graffiti	DIY Finger Skateboards	Sling Puck	Basketball Bounce Pong
CHILDREN'S CHOICE	Inspired by children's interests, ideas, and choices through child-led play and exploration. Start with an idea. Shape the adventure. Share the discovery. START SHAPE SHARE				
SKILL ZONE	Urban Parachute Games	Reaction Speed Challenges	Rip Tag Arena	Urban Parkour Challenges	Carnival Cornhole

WEEK 6 W/C 24th - 28th AUGUST

	MONDAY	TUESDAY	WEDNESDAY	THURSDAY	FRIDAY
HERO ACTIVITY	Clean Up Challenge	Base Camp Rounders	Lost in the Wild Challenge	Terrain Dash	Campfire Circle Challenges
ARTS & CRAFTS	Outdoor Dream Catchers	Nature Name Plaques	Build a Penguin	Colourful Caterpillar Sticks	Texture Crayon Printing
CHILDREN'S CHOICE	Inspired by children's interests, ideas, and choices through child-led play and exploration. Start with an idea. Shape the adventure. Share the discovery. START SHAPE SHARE				
SKILL ZONE	Save the Water Relay	Wool Weaving	Big Eco Friendly Quiz	Build a Den Challenge	Snakes In the Grass

WINNERS OF THE WEEK

TED AND PUP

Attendance: Gnome Class in Year 2

Punctuality: Pegasus Class in Year 3

SUPERSTARS OF THE WEEK



EYFS: Peter and Benjamin

Year 1: Jesse and Evie



Year 2: Everyone!

Year 3: Roman and Bobby



Year 4: Evelyn and Mehmet

Year 5:

Year 6: Vinisha and Alfie

HOUSE POINTS THIS WEEK

1. Fire - 378 Points
2. Water - 348 Points
3. Air - 324 Points
4. Earth - 307 Points

TIDY CLASSROOMS

As judged by our House Captains

Key Stage 1: Not judged this week

Key Stage 2: Not judged this week

WALK ON WEDNESDAY

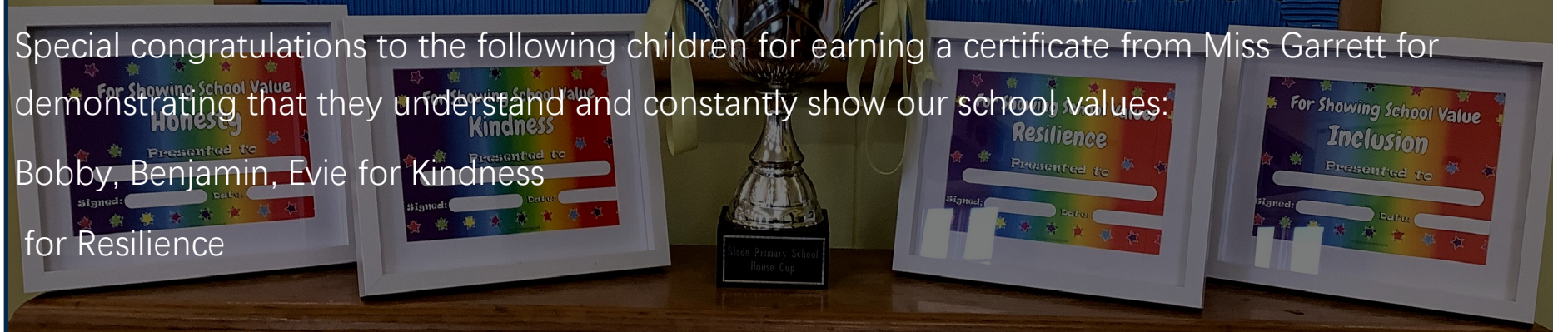
The number of pupils walking, riding or scooting to or part of the way to school through Park and Stride.

Key Stage 1 - Gnome Class (25/30)

Key Stage 2 - Dragon Class (26/30)

CELEBRATING OUR SCHOOL VALUES

Special congratulations to the following children for earning a certificate from Miss Garrett for demonstrating that they understand and constantly show our school values: Bobby, Benjamin, Evie for Kindness for Resilience



TIMES TABLES ROCKSTARS CHAMPIONS



Individual Champions This Week

Year 2: Flora (Gnome) Year 5: Melwyn (Wyvern)

Year 3: Heidi (Pegasus) Year 6: Paul (Dragon)

Year 4: Charlie (Sphinx)

Summer Class Competition (Current Table)

DAILY MILE TERMLY COMPETITION



Class Champions This Week

Key Stage 1: Pixie (240 Laps)

Key Stage 2: Dragon (102 Laps)

Summer Competition (Weeks Won)

Key Stage 1: Sprite (4), Gnome, Elf (1)

Key Stage 2: Sphinx (3), Griffin (1)

Attendance

Over a school year, we are due to be open for 190 days which equates to 380 sessions.

Registration takes place at 08:50 in the morning and after lunch in the afternoon.

Attendance is affected if a pupil is not present at school for any whole session including registration.

Please try not to book routine medical appointments or holidays (even travel) in school time. You should notify us of any planned absence immediately via attendance@slade.kent.sch.uk

The class with the best attendance each week will win Attendance Ted.

Gnome Class are back on top of the podium with an attendance of 99.3% this week.

Congratulations to Mrs Manktelow and all of Gnome Class in Year 2.



Late Children This Week = 32



Punctuality Pup This Week

Well done to all of the classes with no late pupils this week: Pegasus, Wyvern, Dragon, Elf, Griffin
Pegasus again, olé olé Two weeks on the trot, no late marks for Miss Meers and Miss Elliott's Year 3 class and take Punctuality Pup for having the highest attendance of the classes with everyone in on time!

Our Attendance Target = 97.0%

Our Attendance This Year = 95.8%

Our Attendance This Week = 96.5%

Attendance Ted This Week




Position	Class	Year Group	Attendance this Week
1	Gnome	Year 2, Mrs Manktelow	99.3%
2	Elmer	EYFS, Mrs Mulherrn	99.0%
3	Pegasus	Year 3, Miss Meers and Miss Elliott	98.3%
4	Phoenix	Year 4, Miss Taylor and Miss Maple	98.0
4	Sphinx	Year 4, Mrs Burnside	98.0%
6	Sprite	Year 2, Mrs Shrimpton	97.0%
6	Wyvern	Year 5, Miss Hall and Mrs Potter	97.0%
8	Hippogriff	Year 3, Mr Louth	96.7%
8	Hydra	Year 5, Mr Duffin	96.7%
10	Gruffalo	EYFS, Mrs Pearson	96.3%
11	Pixie	Year 1, Mr Clark	95.7%
12	Dragon	Year 6, Mrs Worley	94.3%
13	Elf	Year 1, Mrs Hitchcock	93.2%
14	Griffin	Year 6, Mrs Fordyce	92.0%

Punctuality




Registers are taken at 08:50. If children arrive after this time, they are registered late.

It is important that the children are at school on time every day to prevent disruption and upset to their day and for the rest of their class.

Punctuality Pup is awarded to the class with the best punctuality each week.

September	October	November
		

December	January	February
		

March	April	May
		

June	July
<p>Friday 26 - Non Uniform Day for all school</p> <p>Tuesday 30 - EYFS26 New Parents Information Meeting (18:30)</p>	<p>Wednesday 1 - EYFS26 New Parents Information Meeting (09:30)</p> <p>Thursday 2 - Transition Day</p> <p>Wednesday 8 - Fire House Non Uniform Day (Term 5 Housepoint Champions)</p> <p>Thursday 9 - PCSO Toni Matthew Year 6</p> <p>Friday 10 - Year 6 Haysden hike</p> <p>Monday 13 - Reports Day</p> <p>Monday 13 - Year 6 Production</p> <p>Wednesday 15 - Year 4 Haysden Hike</p> <p>Wednesday 15 - Year 6 Production</p> <p>Friday 17 - Last Day of Term 6</p>

More information about these events will appear nearer the time.

Events and dates are subject to change

[Full Online Calendar](#)
[2025/26 Term Dates](#)

In class

My child's class learning, class activities, lessons, homework or pastoral support; concerns about bullying and behaviour

classname@slade.kent.sch.uk

Absence

Sickness Reporting, Absence Requests and all Medical Appointments

attendance@slade.kent.sch.uk

School Office

General Enquiries and School Events

office@slade.kent.sch.uk

Slade PTA

Slade PTA

pta@slade.kent.sch.uk

Wraparound

Yeti's Wraparound: Childcare Voucher questions and all General Enquiries

yetis@slade.kent.sch.uk

Sport and Activity

Extra Curricular Activity Clubs (booking and queries) Sports Events and Representative Sports Tournaments

sportsandactivities@slade.kent.sch.uk

Admissions

In Year and September EYFS Admissions

admissions@slade.kent.sch.uk

Finance

Childcare Vouchers, Payments for Yeti's and School Meals and School Trips and Special Lessons

finance@slade.kent.sch.uk

School Lunches

Comments and questions about school meal provision from Emma's Kitchen

emma@emmaskitchen.co.uk

Family Liaison

If you would like the services of our Family Liaison Officer, Libby, or just wish to talk over a family issue in confidence

flo@slade.kent.sch.uk

Complaints

For all complaints, please refer to the [Complaints Policy](#) then contact us:

slaws@slade.kent.sch.uk

GDPR

Reporting of GDPR Breaches, details of our privacy policy and for Subject Access Requests

slaws@slade.kent.sch.uk

Payments

School Dinners

School Dinners provided by Emma's Kitchen are free to the following groups:
 EYFS Classes, Year 1 Classes, Year 2 Classes, EYFS, KS1 and KS2 pupils eligible for benefits related Free School Meals
 School Dinners provided to KS2 (Year 3-6) children are charged at £2.60 per meal.
 Credit should be loaded onto the Meals section of your Arbor account in advance of a meal being taken.

Yeti's Wraparound Provision (Breakfast and After School Clubs)

Breakfast Club is charged at £5.25 per session After School Club is charged at £5.25 per session:
 After School Club Session 1 (15:30 - 16:30), Session 2 (16:30 - 17:30)
 Payment and Booking should be made via your online Arbor account.
 For full information please see our website: [Breakfast and After School Clubs](#)

School Visits, Other Special Events and Swimming Lessons

These payments are all made via your Arbor account. You will receive details of the amount owed and the due date as well as information on the event via email in advance.